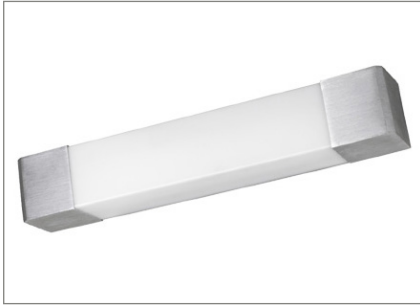


SVL LED

Project Name:	
Type:	



APPLICATION

Wall or ceiling corridor light. Acrylic diffuser with metal end caps. Ideal for use in public areas, corridors, locker rooms, laundry, bathrooms and work areas.

FEATURES:

- Aluminum end caps and an aluminum body.
- Extruded matte white acrylic diffuser.
- Natural aluminum finish as standard (AL)

MOUNTING:

- Surface wall mounting.
- Horizontal or vertical mount.
- Provided a universal mounting back for a standard 3" plaster ring or J-box.

LED:

- Color Temperature: 2700/3000/3500/4000/5000 (K).
- LED Module: High efficiency up to 140 LPW.
- Service life: Greater than 60,000 hours(L₇₀) minimizing maintenance frequency.
- Poke in wire connectors.
- Color variation within 3-step MacAdam ellipse.

ELECTRICAL:

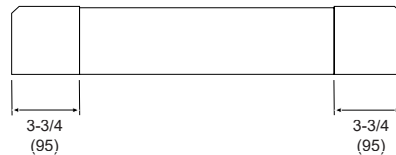
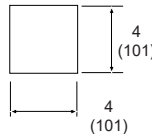
- High power factor electronic driver, operate from a 120~277 Vac input range, 50 / 60 Hz.
- Dimming Control: 0-10V 10%~100%.
- Power Factor: +0.9
- Efficiency: +85%
- Ambient Operating Temperature: -22°F (-30°C) ~ 122°F (50°C).
- Constant Current, Class 2

ADA COMPLIANT:

- ADA requires all fixtures below 68" to have a maximum projection of 4".

LISTING:

- UL listed and labeled.
- Listed to UL 1598 and UL 8750.
- Suitable for damp locations.
- ADA compliant.
- ARRA compliant (optional).
- 5 years limited warranty.
- 7 or 10 years limited warranty. (optional) ²
- Bluetooth Mesh System available, please contact factory for more information.



Specifications:

Length: 23-7/8 (606)
 35-7/8 (911)
 47-7/8 (1216)
 Width: 4 (101)
 Height: 4 (101)

All dimensions are in inches (millimeters).

CONFIGURATIONS

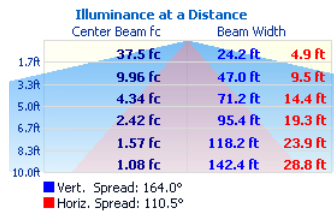
	Input Watts	Lumen Output	Lumen Efficiency
18L	18W	1399 lm	77.7 lm/W
22L	22W	1709 lm	77.7 lm/W
32L	32W	2803 lm	87.6 lm/W
41L	41W	3952 lm	96.4 lm/W

: Based on 5000K.

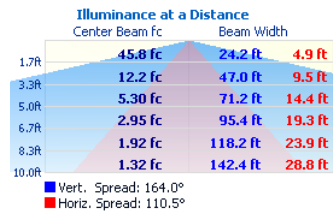
Zone	Lumens	% of Luminaire
0-40	609	12.9%
0-60	1172	27.0%
0-90	2312	48.9%
90-180	2417	51.1%

SVL LED

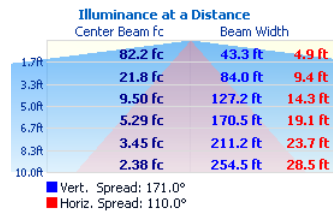
SVL-2-18LED



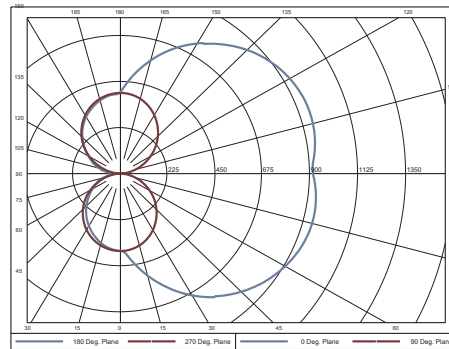
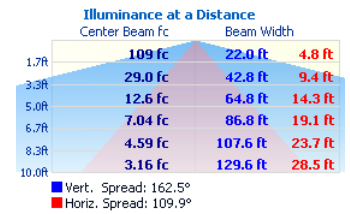
SVL-2-22LED



SVL-3-32LED



SVL-4-41LED



COMPATIBLE DIMMER SWITCH (TABLE 1)

Model #	Brand	Compatible Dimmer Switch	
(Blank)	-	<Leviton>	IllumaTech IP7 series
		<Lutron>	Visit www.lutron.com/advance for a list of dimmers (Mark VII) that will work with this driver.
		<Philips>	Sunrise : SR1200ZTUNV
ES566	eldoLED SOLOdrive	<Busch-Jaeger>	2112U-101
		<Jung>	240-10
		<Leviton>	IllumaTech - IP710-DLX
		<Lightoller Controls>	ZP600FAM120
		<Merten>	5729
		<Pass & Seymour>	CD4FB-W
		<Wattstopper>	DCLV1
		<Sensor Switch>	nIO EZ
		<Synergy>	ISD BC
		<ABB>	SD/S 2.16.1
		<Lutron>	Nova T: NTFTV Diva - DDTV-xx, NFTV GRAFIK Eye: GRX-TVI w GRX3503 Energy Savr Node: QSN-4T16-S TVM2 Module
<Crestron>	GLX-DIMFLV8, GLXP-DIMFLV8, GLPAC-DIMFLV4-*, GLPAC-DIMFLV8-*, GLPP-DIMFLVEX-PM, GLPP-1DIMFLV2EX-PM, GLPP-1DIMFLV3EX-PM, DIN-AO8, DIN-4DIMFLV4, CLS-EXP-DIMFLV, CLCI-1DIMFLV2EX		
LDE1	Lutron 5-Series EcoSystem	<Lutron>	PowPak Dimming Modules: RMJ-ECO32-DV-B, FCJ/FCJS-ECO ^{1,2} Energi Savr Node (120V only): QSN-1ECO-S, QSN-2ECO-S GRAFIK Eye QS/Homeworks QS control unit (120V only): QSGRJ- E(wireless) QSGR- E Quantum Hub (120V only): QP2-__2C/4C/6C/8C Homeworks QS/myRoom Plus power module (120V only): LQSE-2ECO-D


NOTES:


- All devices connected to one FCJ/FCJS-ECO will be controlled together. Devices will dim to the same level as the result of a control command. For more detail on adjusting low-end light level refer to Application Note#556 at www.lutron.com.
- For the Line/Hot (L/H) terminal on the driver, it is preferred not to use the switched hot (red) wire from the control but rather the hot wire directly from the power source.

SVL LED

ORDERING INFORMATION

EXAMPLE: SVL-2-22L-40K-UNV-AL-DM

MODEL	LENGTH		LED		COLOR TEMP.		EFFICACY		CRI		VOLTAGE	
SVL	2	2' Length	18L 22L	18W LED 25W LED	-27K -30K -35K -40K -50K	2700K ³ 3000K 3500K 4000K 5000K	(Blank) HE	Standard High Efficacy 	(Blank) C9	80+ CRI 90+ CRI ⁴	UNV	120-277V
	3	3' Length	32L	37W LED								
	4	4' Length	41L	49W LED								
			xxL	Choose wattage for SDM option <small>* Contact factory for custom wattage or lumen requirement.</small>								

FINISH		LED DRIVER		OPTIONS	
AL AMB	Aluminum (Std.) Anti-Microbial Coating (Matte Skye White) <small>* Available custom color (RAL) Please provide us with the RAL number.</small>	DM DM1 SD50 LDE1 PHSR  BLT	Dimming Driver (0-10V 10%~100%) (Std.) Dimming Driver (0-10V 1%~100%) Step Dimming Driver ¹ Hi-lume 1% EcoSystem LED driver with Soft-on, Fade-to-Black dimming technology, 100% ~ 1% dim Philips Xitanium Sensor-Ready, Dali 5%~100% dim Bluetooth Mesh System (contact factory for more information)	ARRA O7W O10W GTD GTD10DIM EMG8 EMG15 EMG20	Assembled in USA for Buy American Act Optional 7 Years Limited Warranty ² Optional 10 Years Limited Warranty ² Bodine Generator Transfer Device Bodine Generator Transfer Device (0-10VDC Dimmer Override) 1296 LUMEN EM Battery Backup (CEC Compliant EM) ^{5,6} 2430 LUMEN EM Battery Backup (CEC Compliant EM) ^{5,6} 3240 LUMEN EM Battery Backup (CEC Compliant EM) ^{5,6}

LIGHTING CONTROL SYSTEM	
LUTRON VIVE	<Lutron Vive System Enabled>  Click Here!

NOTES:

1. Lumens and watts per foot may differ for STEP drivers, consult factory.
2. This limited warranty covers electrical parts only and does not apply to labor, equipment lease, or defect from improper installation or operation.
3. Available with C9 only.
4. Lumen per watt is around 15% less than standard CRI (80+)
5. Contact factory for other emergency ballast options.
6. Only available on 3ft and 4ft housing.