



## FOR LEASE – RESTAURANT SPACE OR EVENT VENUE

380 Parker Square  
Flower Mound, TX

### LOCATION:

Parker Square is centrally located in the heart of Flower Mound, off FM-1171 (Cross Timbers Road). Patrons also have easy access to both I-35E and FM-2499 (Long Prairie Road). Parker Square offers a beautiful setting, resembling European-style square with an old-world charm.

### SIZE:

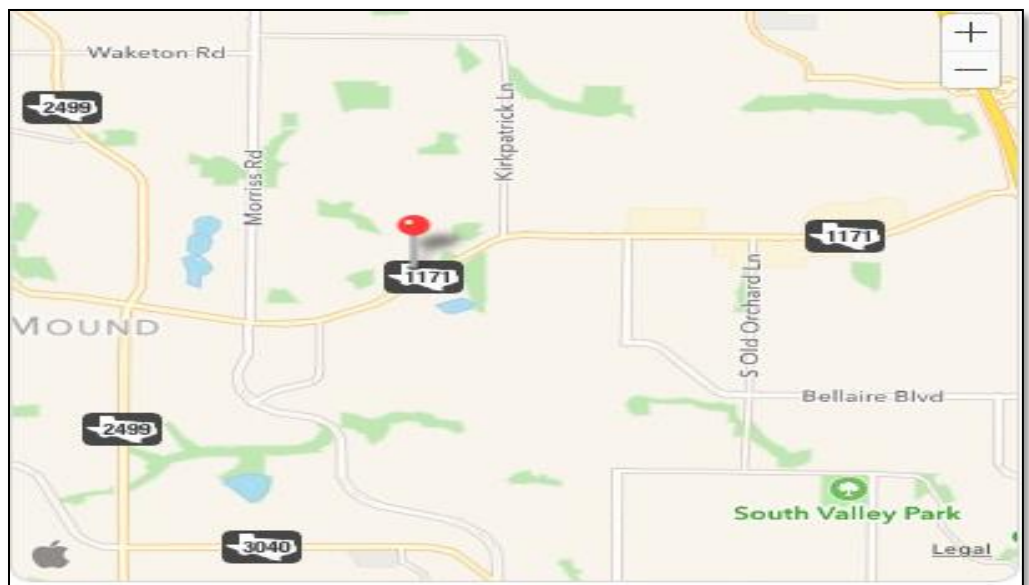
- 3,998 RSF

### LEASE RATE:

\$17.50/SF Base +  
NNNs (\$6/SF)

### HIGHLIGHTS of SPACE:

- 2<sup>nd</sup> Generation Restaurant Space
- Kitchen Area (with vent hood, grease trap and coolers)
- Bar Area
- Small Private Party Room
- 2 Restrooms
- Large Patio
- Ample Parking
- Diverse Mix of Other Tenants



## FOR INFORMATION:

Phyllis Garcia

972.899.1851 | [Phyllis@BridgeRealtyTexas.com](mailto:Phyllis@BridgeRealtyTexas.com)

[www.BridgeRealtyTexas.com](http://www.BridgeRealtyTexas.com)

800 Parker Square, Suite 285C | Flower Mound, TX 75028

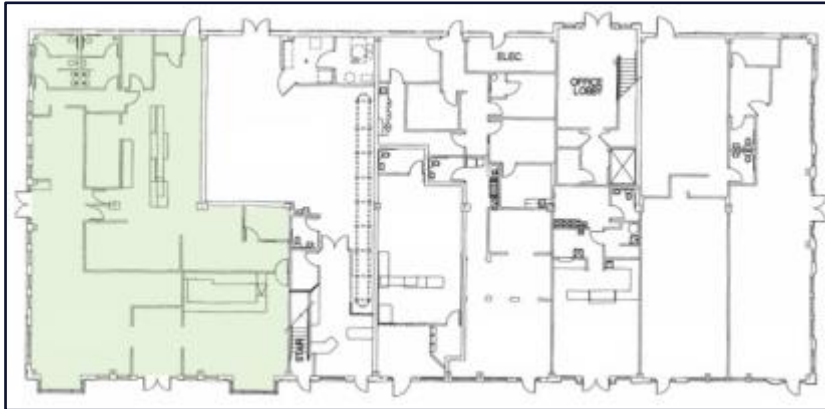
This information is believed to be accurate, but no representation or warranty, express or implied, as to its accuracy or completeness is made by any party. The presentation of this property is submitted subject to errors, omissions, change of price or prior sale or lease, or withdrawal without notice.



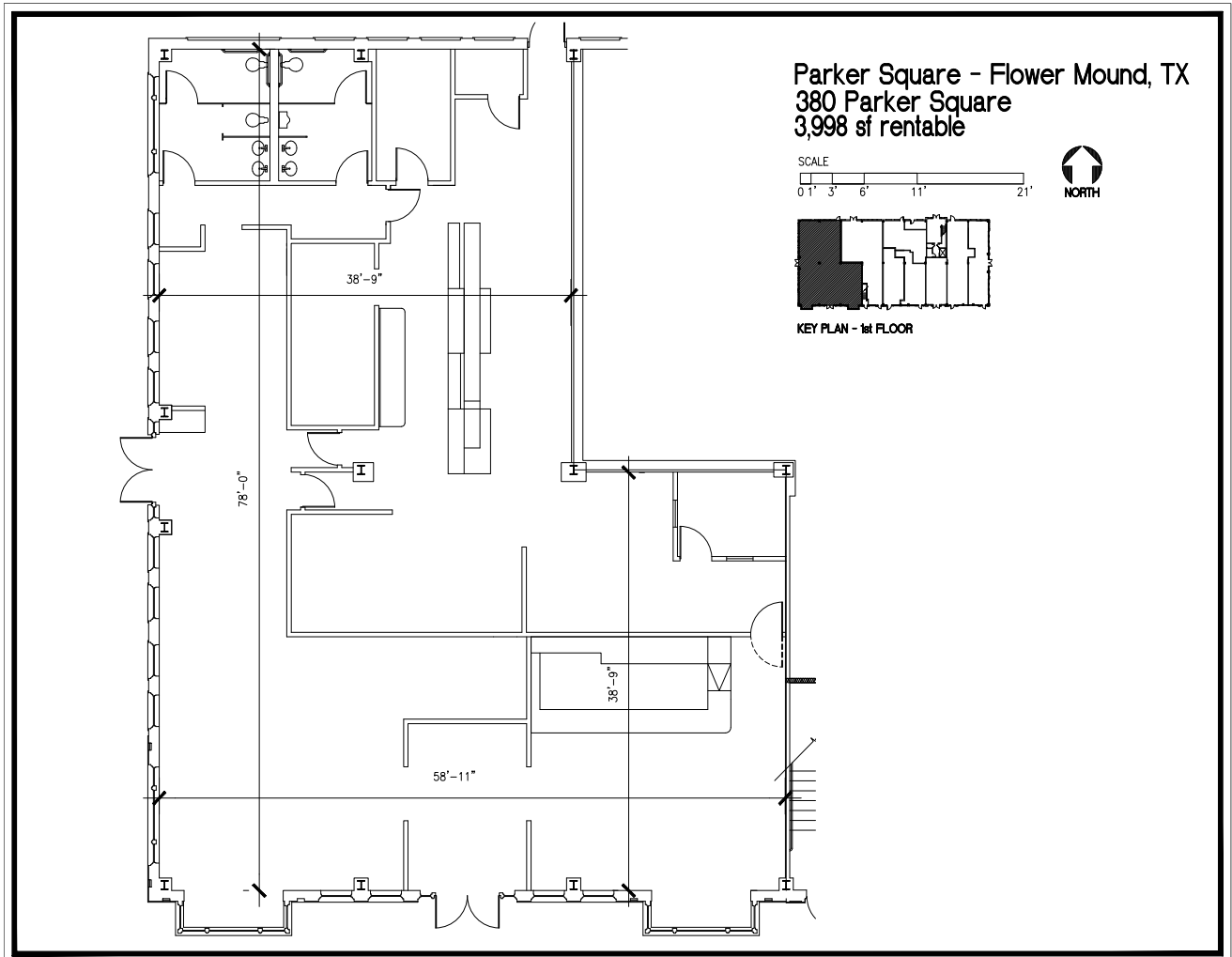
# FLOOR PLAN

## 380 Parker Square Flower Mound, TX

Building 300 - Site Plan



Suite 380 - 3,998 RSF





**RESTAURANT OR EVENT SPACE**  
380 Parker Square  
Flower Mound, TX

