



BROWARD QUILT

Expo

P.O. Box 460621
Fort Lauderdale, FL 33346-0621
www.browardquiltexpo.com

Welcome to Broward Quilt Expo 2017!

Every BQE Board member has been working hard to make this show the best one possible! Now we encourage you to do your part by participating wherever you can... by attending the show, entering some quilts, taking classes, making a "mini" for the auction, taking a 'chance' on our Basket Walk Raffle, and/or attending our quilt award ceremony, lecture, and trunk show given by Sherri Lynn Wood. And, we are always in need of volunteers to assist in many areas - so please think about donating some of your time. It takes all of us, in all six guilds, to make this show happen!

I look forward to seeing you at the expo. - Linda Wilson, BQE 2017 Chairperson

Show Highlights

14th Biennial Quilt Show and Vendor Marketplace

March 9 to 11, 2017

War Memorial Auditorium
800 Sandy Ninger Drive (NE 8th Street)
Fort Lauderdale, FL

Lecture and Awards Ceremony

"Improvise! Creating, Quilting, & Living Courageously"

Multi-media presentation by **Sherri Lynn Wood**

March 8, 2017

Wednesday, 7:00 PM, War Memorial Auditorium
800 Sandy Ninger Drive, Fort Lauderdale, FL

Hours:

Thursday, March 9 - 10 AM to 6 PM
Friday, March 10 - 10 AM to 6 PM
Saturday, March 11 - 10 AM to 5 PM

Tickets:

\$12 per day, \$25 three-day pass
FREE city parking included!

Show Features:

- Nationally-recognized teachers:
 - Nancy Mahoney**
 - Sherri Lynn Wood**
- More than 30 Marketplace Vendors
- BQE-tique - shop for quilt items, gifts
- Judged Quilt Show with Cash Prizes
- Challenge Quilt Competition
- Special Exhibits
- Miniature Quilt Auction Saturday PM
- Basket Walk Raffles Prizes
- Professional Quilt Appraiser

Presented by six Quilt Guilds in Broward County:

- Coral Springs Quilters, Inc.**
- East Sunrise Quilters**
- Quilting in the Pines Guild, Inc.**
- Southern Stars Quilt Guild**
- West Broward Quilters Guild**
- South Florida Modern QG**

Table of Contents

Special Exhibits, BQE-tique.....	2
Our Quilt Judge, Awards/Ribbons..	2
Quilt Challenge - "Jazz!"	3
Miniature Quilt Auctions.....	3
Our Workshop Teachers	4
Our Workshop Descriptions	5, 6
Ways to Participate and Support ...	6
What to Bring to Class	6
Workshop Registration Form	7
Quilt Entry Rules and Categories...	8
Quilt Entry Form	9
Quilt Show Info.....	back

Improvisation is at the heart of living creatively. Music, dance, theater, drawing, cooking, conversation, play, child rearing, and even science benefit from the flexibility of mind that improvisational process engenders.

We all improvise every day. Attendees will leave with mind tools, tips and a fresh perspective on how to apply improv skills learned in life to their patchwork – and vice versa!

Trunk Show includes classic African-American quilts in the improvisational style, time-lapse process videos, and quilts featured in her books.

Also, this same evening enjoy...

The presentation ceremony revealing the prizes and ribbons awarded to the quilt competition winners!

Tickets: \$10 in advance or at the door



Special Exhibits

2017 Broward Quilt Expo will feature our first ever International Quilt Collection Exhibit of 23 art quilts from Brazil and beyond! The theme Simplicity allows different interpretations, enabling artists to play with the concept. A simple situation, a basic object, an uncomplicated feeling, or something complicated explained simply...

Each artist represented the Simplicity their way, in their current circumstances. The result was a light show, where nature and its elements integrated into the artwork. In some, elements created by the culture chosen to address the issue. Some artists expressed simplicity through geometric shapes. Others preferred to use abstract shapes to communicate their feelings.

Different materials and techniques were used. In some works, soft colors relax our eyes. In others, intense colors attract our attention. Through creativity and perspective of each artist, the exhibition makes us reflect on what is simple. Simplicity "speaks" explicitly of love in at least 2 works and implicitly in all of them ... leaving us speechless. We hope you'll simply like it!



BQE-tique

At every BQE show, booth space is set aside especially for selling our guild members' handmade, quilt-related items or other sewing-related accessories. You set the price for all the items you want to sell. The only rule is that your items cannot compete with those that our Merchant Mall vendors are selling.

You may sell quilted items such as book covers, placemats, table runners, pin cushions, kitchen accessories, quilt tops, unfinished projects (UFOs), apparel, jewelry, sewing accessories, portable light or iron carriers, and even antique fabrics and quilts. Our goal is to offer you a venue to sell your quilting items while not encroaching on what our vendors have brought to sell.

If you want more information about the arrangements and forms for selling your quilt-related items on a consignment basis at our BQE-tique booth, please contact Holly Harrington at:

Email: hfabric@aol.com

Telephone: 954-757-9743

Or send a self-addressed, stamped business envelope to: Holly Harrington, 6780 NW 41 ST, Coral Springs FL 33067

Our Quilt Judge



Karen Roberts, of Sanibel, Florida, began quilting in 1993 following many years of garment sewing and needle arts. After competing in numerous quilt shows, she became interested in judging. Following completion of the National Quilting Association (NQA) Judges Short Course and the rigorous judge's Candidacy program, she received her NQA Judges Certificate in 2007. In 2009 she obtained certification as a Master Quilt Judge.

Karen has earned many ribbons and awards in regional, state, and national competitions. Her work has been exhibited at the NQA Show in Columbus, OH; AQS shows in Paducah, KY and Nashville, TN; Quilt Expo in Madison, WI; Pacific West Quilt Show in

Tacoma, WA; and various regional shows in Wisconsin, Illinois and Florida.

While employed in two quilt shops, she taught classes, designed patterns, and created an original pattern for McCall's magazine.

While Karen's quilting style began in the traditional vein, she also enjoys the "modern" quilt movement and art quilts.

Her role as a judge is to encourage and motivate quilters, helping them to gain confidence and improve their quilt-making skills. Each entry is evaluated objectively and fairly, recognizing the creativity and workmanship in each piece, while providing helpful and constructive critiques.

Awards / Ribbons

Best of Show\$300

For Each Quilt Category

First Place\$150

Second Place.....\$100

Third Place.....\$50

Quilt Categories

(Category descriptions on page 8)

Large Pieced	Small Pieced
Two-Person Large	Two-Person Small
Appliqué	Appliqué Duo
Miniature	Mixed Techniques
Innovative Design	Modern Design
Group	

Awards at Judge's Discretion

Honorable Mention.....Ribbon

Judge's Choice.....Ribbon

Special Merit Awards

Hand Quilting, Machine Quilting,
Innovative Use of Color.....\$100 ea

Challenge Quilt Awards

First Place\$100

Second Place.....\$75

Third Place\$50

Youth Award.....\$100

Viewers' Choice Award.....Basket



Quilt Challenge

JAZZ! is our theme! It is a genre of music that originated from African American communities of New Orleans during the late 19th and early 20th centuries. Jazz is also described as being characterized by a strong, prominent meter, improvisation, distinctive tone colors and performance techniques, and dotted or syncopated rhythmic patterns.

The definition and design for your quilt can be anything, and we hope you'll make one to enter!

There are no fabric requirements but there are a few rules:

Challenge Quilt Rules:

1. Size can be any combination of a length and width with the perimeter totaling NO MORE than 144"; your quilt can be any size you want smaller than 144" total, as long as the 4 sides do not add up to more than 144" total.
2. Orientation can be either portrait or landscape.
3. Entry must be a standard quilt with three layers and quilted - creative finishing allowed. On the back, there should be a 4" sleeve for hanging, and a label.
4. The BQE Challenge is open to any member of the six Broward County Guilds: Coral Springs, East Sunrise, Quilting in the Pines, Southern Stars, South Florida Modern & West Broward
5. There is no entry fee.
6. Only one entry per person. Use the regular BQE entry form on page 9 for your challenge quilt. Infor for your challenge quilt entry delivery to the show will be the same as for all BQE quilts.

Quilts will be judged on theme interpretation, construction and overall appearance. Cash prizes will be awarded. Your Challenge Quilt entry is eligible for the Viewer's Choice Award.

Miniature Quilt Auctions

Here is a wonderful opportunity to help make money for your guild...make a miniature quilt! It's a chance for you to do something a bit different...on a smaller scale from your usual work. Do your best work to bring in the highest prices for your guild; a small portion of the proceeds goes to BQE.

This year we are making a few exciting changes. First, the live auction will take place at 3 PM on Saturday, March 11, at the end of the show. Second, all quilts will have a "**Buy It Now**" price and can be sold for this price prior to the auction. Photos and descriptions of all quilts will be available to view on the show website two weeks prior to the show.

Your guild will determine which auction your mini-quilt will be placed into for sale and will assign a "**Buy It Now**" price. All mini-quilts must be submitted to your guild ahead of time, in order for it to be handed in by your BQE Guild representative at Quilt Collection on Thursday, February 9, 2017.

Miniature Quilt Guidelines

- **Size:** Maximum size is 96" perimeter total. No minimum size.
- **Techniques:** May be pieced, appliquéd, or a combination of the two. May be embellished with beads, threads, buttons, etc. May be hand- or machine-quilted, but not tied.
- **Acceptable:** Whole cloth designs, crazy patch miniatures, landscapes, and pictorials, but *no* single quilt block quilts (for example, no potholders).
- **Appearance:** Quilts must be clean and free of pencil marks, stains, pet hairs, and other odors. Quilts must be bound on all edges.
- **Additions:** Attach a hanging sleeve so the new owner can hang it right away. Add a label to the back that includes your name and guild affiliation.
- **Form:** Prepare a Miniature Auction Entry Form available from your BQE guild representative or download a form from www.browardquiltexpo.com and turn it in with your quilt. Describe your quilt completely and clearly with a colorful description that will help sell your quilt to its best potential. List interesting techniques and materials used.

Submission

All miniature quilts for the auction must be approved by the Mini-Quilt Auction Committee. Donated mini-quilts are eligible for the Viewers' Choice Award. Your mini may also be entered in the BQE show for judging **before** any auction occurs. For this, please submit your quilt with both the regular Quilt Entry Form and the Mini-Quilt Auction Form, completely filled out. Please give your mini-quilt to your guild's BQE representative in time to ensure your donation is listed in the BQE show book. *Remember, your guild determines - before Quilt Collection on Sunday, February 12th - which auction your mini-quilt will be placed into.*

Questions?

Contact Karla Irby at KVMIB@aol.com or 954-873-7416, or Diane Beers at Baskets4moo@yahoo.com or 954-632-4206.

Your BQE Mini-Quilt Representatives:

Coral Springs: Janet Oxley
Quilting in the Pines: Denise Glaser
East Sunrise: Debbie DeJesse

West Broward: Linda Wilson
Southern Stars: Karla Irby
So FL Modern: Charlotte Noll



Our Workshop Teachers

Nancy Mahoney - teaching 2 full day, 1 half day workshops

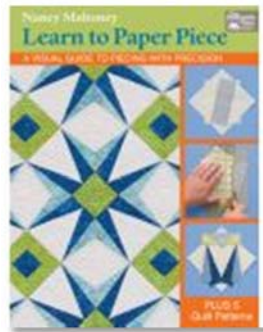


Author, teacher, and fabric designer, Nancy has enjoyed making quilts for over 25 years, during which time an impressive range of her beautiful quilts have been featured in over 110 national and international quilt magazines. She has

also created over 80 quilt patterns for a variety of fabric manufacturers.

Nancy has authored 14 books since 2002, all have been published by Martingale. Her bestselling books include *Appliqué Quilt Revival* (2008), *Quilt Revival* (2006), *Treasures for the 30s* (2010), *Fast, Fusible Flower Quilts* (2011), *Kaleidoscope Paper-Piecing* (2012), and *Simple Circles and Gentle Curves* (2013). She has designed 15 fabric collections, including five 30s reproduction collections for P&B Textiles. Nancy is working on her next fabric collection, and her newest book, *Learn to Paper Piece*, is available as of March, 2016.

Nancy enjoys combining traditional blocks and updated techniques to create dazzling quilts. Not considering herself a specialist in one particular area, Nancy's favorite techniques include precision machine piecing, quilt design, and machine appliqué. Nancy has taught many workshops nationwide for guilds, shops, and conferences; including International Quilt Festival (Houston), Minnesota Quilter's Conference, Kentucky Getaway, Road to California, A Mountain Quiltfest (Tennessee), and many more.



Nancy believes making a quilt should be fun. In her classes, Nancy's goal is for students to have a good time, learn something new, and make a quilt that they will enjoy for many years. When she's not designing and making quilts, Nancy enjoys traveling to guilds and events around the country, sharing her quilts, teaching her piecing and machine appliqué techniques, and visiting gardens.

Visit Nancy's website, www.nancymahoney.com, for more information about Nancy and her quilts.

Sherri Lynn Wood - teaching 2 full day, 1 half day workshops



Sherri is an artist living and working in Oakland, CA. She is the recipient of the Joan Mitchell Foundation Grant for Painters and Sculptors, and a two-time MacDowell Colony Fellow. She has been making and improvising quilts as a creative life practice for twenty-five years, and

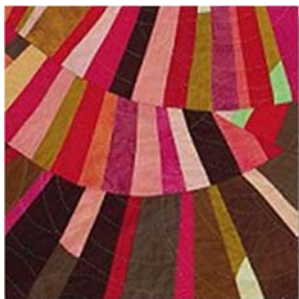
blogs about it at daintytime.net.

Teaching credits include Penland School of Craft, QuiltCon, and numerous modern and traditional guilds across the country. Her first book, *The Improv Handbook For Modern Quilters – A Guide to Creating, Quilting and Living Courageously*, was released by STC Craft/Abrams in May 2015 and has already sold more than 6000 copies.

Modern quilting is about expanding the boundaries of the tradition without forgetting them. Improvisational patchwork is one of the cornerstones of the modern quilt movement because it drives the evolution of innovative design. Improvisation is not design but the creative process behind design, cultivating and pushing it towards the fresh and authentic.



Says Sherri: I love to teach and have 20 years of experience sharing my work through presentations, demos, and workshops. My teaching focus is improvisational process and technique. I use a multi-disciplinary approach for teaching the process of improvisation. I invite students to draw on methods of improvisation from music, theater, drawing, and meditation as well from their everyday life – cooking, child rearing and conversation. We all improvise everyday so why not bring it into our quilt making! Check out workshop photos at www.daintytime.net/workshops.

10Class ID: **TH101****Thursday, March 9, 2017 - Full Day Workshop**

Time: 9 a.m. to 4 p.m.

Fee: \$80 per class

Skill Level: All

Get Your Wedge Curve On – Sherri Lynn Wood

Get your wedge-curve, mod-mood, groove on in this improvisational quilt-making workshop. Participants will commit one step at a time, as they explore advanced approaches to improvised patchwork and composition, develop a personal/intuitive language of color, and learn ruler-free, wedge-curve, piecing techniques.

(6 hours) Limit: 25 Students

Pattern/Kit Fee: N/A/Included. Sewing machine required.

Class ID: **TH102****Thursday, March 9, 2017 - Full Day Workshop**

Time: 9 a.m. to 4 p.m.

Fee: \$65 per class

Skill Level: Confident Beginner and up

Round About – Nancy Mahoney

This fun quilt is easier to make than it looks. Class time begins with tips for sewing accurate patchwork blocks using strip piecing techniques. Then we'll shift our focus to easy invisible machine appliqué techniques. Discover how surprisingly simple it is to sew perfect curves using turned-edge appliqué techniques. Pattern included for each student. Finished size: 64" x 64". Quilt shown in Fons & Porter's *Easy Scrap Quilts*, Fall 2011. Based on *Simple Circles and Quick Curves* book.

(6 hours) Limit: 24 - 30 Students

Pattern included for each student. Sewing machine required. For machine appliqué: machine needs to be able to sew a blanket stitch or blind hem stitch; embroidery foot required

Class ID: **FR103****Friday, March 10, 2017 - Full Day Workshop**

Time: 9 a.m. to 4 p.m.

Fee: \$80 per class

Skill Level: All

Modern Block Improv – Sherri Lynn Wood

The goal of improvisational patchwork is flexible patterning. Participants will start with a favorite fixed or "traditional" block pattern and gradually transform it through a series of repetitions and variations. Without the use of rulers, templates or instructions to guide them, they will gain a deeper sense of how patterns evolve, while learning ruler-free patchwork and composition techniques along the way.

(6 hours) Limit: 25 Students

Pattern/Kit Fee: N/A/Included. Sewing machine required.

Class ID: **FR104****Friday, March 10, 2017 - Full Day Workshop**

Time: 9 a.m. to 4 p.m.

Fee: \$65 per class

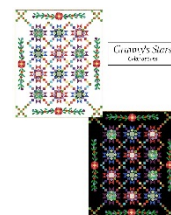
Skill Level: Confident Beginner and up

Granny's Stars – Nancy Mahoney

Star blocks, simple appliqué and yo-yo flowers make this traditional looking quilt a real beauty. Students learn how to make the big block stars using Nancy's quick and easy piecing techniques. Fusible appliqué techniques and tips for making perfect yo-yo flowers are included in the class. If reproduction prints aren't for you, batik prints on a dark background would make a spectacular, eye-catching quilt. Finished size: 76" x 94". Shown in Fons and Porter's *Love of Quilting* magazine, July/August 2009.

(6 hours) Limit: 20 – 30 Students

Pattern included for each student. Sewing machine required.



Class ID: **SA105****Saturday, March 11, 2017 - Half-Day Workshop**

Time: 9 a.m. to 1 p.m.

Fee: \$50 per class

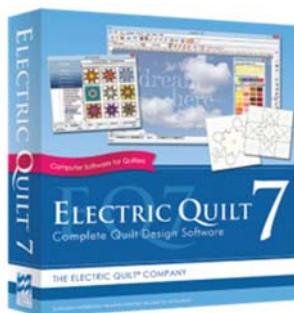
Skill Level: All

Ruler-Free Strip Piecing – Sherri Lynn Wood

Explore intuitive color, make narrative relationships, articulate your line, find your flow, discover your preferences as we experiment with three methods of choosing - random, spontaneous and planned, to create expressive and dynamic strip pieced foundation fabrics without using a ruler. The results can be utilized with stunning effect remixed in either fixed and flexible quilt pattern compositions, or other home and fashion sewing projects. Participants will leave with multiple string sheets created in this half-day workshop.

(3 hours) Limit: 24 - 30 Students

Pattern/Kit Fee: N/A/Included. Sewing machine required. A personal ironing station will be helpful.

Class ID: **SA106****Saturday, March 11, 2017 - Half-Day Workshop**

Time: 9 a.m. to 1 p.m.

Fee: \$35 per class

Skill Level: All

Beginning Electric Quilt 7 – Nancy Mahoney

In this class, students will learn the basics of EQ. Nancy uses a laptop and projector for the workshop so everyone can see and follow along. Nancy will show how to use drawing tools, EQ libraries, Block worktable, and Quilt worktable. See how to set blocks in a quilt layout, add borders, and audition fabrics.

(3 hours) Limit: 25 Students

A laptop computer for each student is encouraged; EQ7 software must be purchased and installed prior to the start of class.

Ways to Participate and Support Broward Quilt Expo

- **Enter a quilt** or two, or more! Compete for cash prizes and beautiful custom made ribbons. Learn about your work from certified quilt judges' comments, which are always insightful, never derogatory, and will be given only to you in a sealed envelope.
- **Make a mini-quilt** or two, or more, for the auction to raise money for your guild.
- **Make quilt-related items** on consignment for sale, or sell that unfinished project or accessory you never used, all from in BQE-tique store.
- **Volunteer** to help at the show. Have fun! Greet guests, sell tickets, assist with the auction - there is a lot you can do to help.
- **Take classes** from our internationally-known teachers. There are classes for all skill levels. There will be single-day workshops on the weekdays, and a half-day classes on Saturday, as well as on-going vendor demonstrations...lots of fun!
- **Shop, shop, shop** 'til you drop, and then crawl! Most vendors are from out-of-town, so they may have items you have never seen before.
- **Advertise** in our BQE show book, or sponsor a quilt category. You as an individual, or your Bee, or a family member who has a business, could buy an ad as a sign of support or to make a personal or business statement. There is a Patron's Page where you may purchase a line of text (or more) for only \$10 per line to write a short message, or post a website address/contact with a service. For advertising information email Déda at deda@dedamaldonado.com or call her at 305-302-8312.

Sorry, no strollers are allowed during our three-day event.

What to Bring to Class

For all the classes, you will need a sewing machine in good working order, and the same basic quilting supplies that you would bring to other classes you may have taken. You may also bring a small ironing station, although ironing boards/irons are provided. Any specific instructions are listed above for each class. Please check your email inbox, as you should have received all the supply lists in an attachment along with this 10-page info packet, or check online at www.browardquiltexpo.com for the information, or follow the instructions in this packet and on the next page.

If you are taking a class, you have the option of bringing your own lunch, going out to area restaurants or fast food places, or there is a snack bar on site, with drinks, snacks, and a limited breakfast and lunch menu available during the day.



Workshop Registration Form

General Information

Student Name:	
Address:	
City, State, Zip:	
Day Phone:	Evening Phone:
Cell Phone	Guild Affiliation:
Email:	

Workshop	Price	Quantity	Total
<input type="checkbox"/> TH101 Thursday, March 9 - Sherri Lynn Wood <i>Get Your Wedge Curve On</i>\$ 80 X _____ = \$ _____			
Pattern/Kit Fee\$ 0 X _____ = \$ _____			
<input type="checkbox"/> TH102 Thursday, March 9 - Nancy Mahoney <i>Round About</i>\$ 65 X _____ = \$ _____			
Pattern/Kit Fee.....\$ 0 X _____ = \$ _____			
<input type="checkbox"/> FR103 Friday, March 10 - Sherri Lynn Wood <i>Modern Block Improv</i>\$ 80 X _____ = \$ _____			
Pattern/Kit Fee\$ 0 X _____ = \$ _____			
<input type="checkbox"/> FR104 Friday, March 10 - Nancy Mahoney <i>Granny's Stars</i>\$ 65 X _____ = \$ _____			
Pattern/Kit Fee\$ 0 X _____ = \$ _____			
<input type="checkbox"/> SA105 Saturday, March 11 - Sherri Lynn Wood <i>Ruler-Free Strip Piecing</i>\$ 50 X _____ = \$ _____			
Pattern/Kit Fee\$ 0 X _____ = \$ _____			
<input type="checkbox"/> SA106 Saturday, March 11 - Nancy Mahoney <i>Beginning Electric Quilt 7</i>\$ 35 X _____ = \$ _____			
EQ7 software must be purchased and installed prior to the start of class.			

Lecture Ticket

Wednesday, March 8, 2017 at 7 PM, "IMPROVISE" lecture by Sherri Lynn Wood, plus Awards Presentation - War Memorial Auditorium Lobby, 800 NE 8 ST, Fort Lauderdale

\$ 10 X _____ = \$ _____

Workshop fees DO NOT include show admission. Total Amount \$

To Register online: Register & pay for classes and lecture tickets as soon as the information has been posted mid-September on www.browardquiltexpo.com. See how quick and easy it is to enroll! You will receive a confirmation email and also be able to download your supply lists from the website.

To register by mail: Enclose your check for the total amount due, payable to **Broward Quilt Expo, Inc.** with a self-addressed, stamped envelope (SASE) so that we may mail you a supply list and workshop confirmation. Send check, SASE and this filled out Workshop Registration Form (keep a copy for your records) to: Broward Quilt Expo, Inc., P.O. Box 460621, Fort Lauderdale, FL 33346, Attention: Workshops

If you have any questions, please contact Karla Irby - kvmib@aol.com or 954-873-7416; or Diane Beers - baskets4moo@yahoo.com or 954-632-4206

- Workshops are filled on a first-come, first-served basis. Payment in full must be included with registrations. Be sure to bring your confirmation page to the workshop. BQE will prepare a waiting list for full workshops and you will be notified if there are openings before the cut-off date.
- Workshop confirmations for registrations received after February 9, 2017 will be held at the front information table at the show. Same day registration for workshops will be permitted up to ½-hour before class starts if space is available. The info/registration table will have all the information about any available seats for the six classes offered.
- Bring your sewing machine and supplies (scissors, thimble, seam ripper, thread, pins, needles, small iron and pressing board, etc.), and a sweater if desired.
- Please turn off your cell phone during the workshop, and be sensitive to others by not wearing perfume to class.
- If you sign up and will be sending your payment by mail and need a hard copy of your confirmation and supply list(s), please include a SASE with your payment. A downloadable supply list is also available for each class on our website: www.browardquiltexpo.com
- If you purchase lecture tickets or a 3-day admission pass online, your name will be on a list at the Will Call window or at the front registration table; please bring ID with you.
- No refunds for class cancellations after February 1, 2017 will be given; no refunds will be given for purchased lecture tickets.
- BQE reserves the right to cancel workshops. If that becomes necessary, your paid fees will be completely refunded for the cancelled workshop or, if you wish, you may be transferred to another class if space is available.



Quilt Entry Rules

1. All quilt entries must be constructed of fabric, have three layers and quilted by hand or machine. No tied quilts or comforters will be accepted. No "cheater cloth" or preprinted quilts will be accepted.
2. No quilts previously exhibited or judged in a Broward or Palm Beach quilt show since March, 2015 are eligible for entry.
3. Entrant's name must be permanently attached to the back of the quilt. Whipstitch a piece of fabric over the label to cover the label information.
4. **All quilts must contain a 4" sleeve at the top edge from which the quilt will be hung. Bed-sized quilts must have the sleeve attached 86" from the bottom edge of the quilt so that the quilt will not touch the floor.**
5. Each entry must be received in its own cloth casing, such as a pillowcase. This casing must be permanently marked with the entrant's name, address, and phone number. No exceptions will be made.
6. Entry forms, pictures and payment must be received by **Wednesday, February 8, 2017**. Submissions may be made via mail or internet.
7. Quilt Collection will be Thursday, **February 9, 2017**, between 2:00 and 7:00 p.m. at **Plantation Community Church, 6501 West Broward Boulevard, Plantation, FL 33317**. Please be sure to pick up your receipt for each quilt you enter.
8. Your Artist's Statement must be 50 words or less. **Excess language will be truncated.**
9. If the entry is shipped, it must be received by February 8, 2017. The cost for return shipping and liability insurance is the sole responsibility of the entrant. Enclose a Pre-Paid Shipping Label or a Mailing Label with a check made out to Broward Quilt Expo, Inc. for the cost of return shipping. *Please don't use foam peanuts as a filler!*
Send entry to: Broward Quilt Expo, Inc. c/o Judy Kaplan
10346 NW 4 ST, Coral Springs, FL 33071
Questions? Phone: 954-753-5493 Email: quiltentry@browardquiltexpo.com
10. Attach to the quilt entry form: two (2), non-returnable, full-view color photos of your entry for identification purposes. On the back of each photo, add your name, the name of the quilt, and an arrow indicating the direction of the top of the quilt.
11. No ribbons or awards may be displayed on or near your quilt unless awarded at the current BQE show.
12. **Judged Quilts:** A non-refundable entry fee of \$10 per quilt for members of sponsoring guilds and \$15 per quilt for all other entrants *must* accompany each entry form. Submit only one form per quilt entry.
13. **Challenge Quilts:** The entry is free, but you must submit an entry form with the quilt. This category is only open to members of the six sponsoring quilt guilds.
14. **Exhibit Only (non-judged) Quilts:** A non-refundable entry fee of \$8 per quilt must accompany each entry form. Quilts may be of any size and all of the above rules apply.
15. Broward Quilt Expo reserves the right to refuse to hang any quilt that exhibits poor quality construction, has been misrepresented by the photos, is soiled or stained, or does not adhere to the entry rules and size restrictions. Broward Quilt Expo also reserves the right to change the category of any entry if deemed more appropriate.
16. If you are entering more than one quilt or entering a quilt and registering for a workshop, **please include all money in one check**. Attach a note as to what the check includes.
17. Quilt pick-up will be immediately after the show ends on Saturday, March 11, 2017 at the War Memorial Auditorium. You or your representative must present the receipt that you were given at Quilt Collection to pick-up your quilt(s). Mailed entries will be shipped back to owners within ten (10) days after the end of the 2017 show.
18. By entering, you give permission to Broward Quilt Expo, Inc. to photograph your quilt for use in event-related publicity (i.e., prize-winning quilts posted on BQE website).
19. BQE assumes no liability of any kind for damaged, misplaced, or lost quilts/personal property during the judging or show. Quilts will be handled with the utmost care.

Quilt Categories

Youth **NEW CATEGORY!!**

Any quilt made by a person 18 years old and under. May be any size. One prize will be awarded for this category.

Modern Design **NEW CATEGORY!!**

Single maker, duo, or group. Quilts should embody the principals of modern design such as use of bold color and prints, high contrast, improvisational piecing, graphic areas of solid color, expansive negative space, and alternate grid work). No side smaller than 36".

Large Pieced

Single maker quilt. Perimeter measures at least 280".

Small Pieced

Single maker quilt. Perimeter measures between 96" and 280".

Two-Person Large

Any quilt made and quilted by two different people. Perimeter measures at least 280".

Two-Person Small

Any quilt made and quilted by two different people. Perimeter measures *between* 96" and 280".

Appliqué

Single maker quilt. Quilt may measure any size.

Appliqué Duo

Appliquéd quilt made by two people. Quilt may measure any size.

Miniature

Perimeter measures 96" or less.

Mixed Techniques

Single maker. May be traditional or contemporary design that includes a combination of techniques (e.g. piecing, embroidery, appliqué, trapunto, painting/stenciling, etc.) Quilt may measure any size.

Innovative Design

Single maker. Must be entrant's own creative design reflecting innovative construction, techniques, theme, and/or materials. May be traditional or contemporary. Quilt may measure any size.

Group

Quilt made by more than 2 people. Quilt may measure any size.

Broward Quilt Expo March 9 – 11, 2017 • Quilt Entry Form

Please fill out completely and make your entries legible. Complete a separate form for each entry.

Entrant Name:	Email Address:
Address:	Day Phone:
City, State, Zip:	Evening Phone:
Name of Quilt:	
Quilt Category (choose only one category):	Guild Affiliation:
Size: inches wide by inches high	Year Completed:
Quilt Description:	Color Scheme:
Check all that apply: <input type="checkbox"/> Hand pieced <input type="checkbox"/> Hand quilted <input type="checkbox"/> Hand appliquéd <input type="checkbox"/> Machine appliquéd <input type="checkbox"/> Machine pieced <input type="checkbox"/> Machine quilted <input type="checkbox"/> Embroidered <input type="checkbox"/> Long-arm machine quilted <input type="checkbox"/> Other	
Made by:	Quilted by:
Designed or Inspired by:	
Artist's Statement (<i>in 50 words or less</i>):	
I would like my quilt to be available for sale. Please add to the Artist's Statement card: <input type="checkbox"/> my phone number <input type="checkbox"/> my email address	
Entry will be submitted by: <input type="checkbox"/> Hand-delivered on Thursday, February 9, 2017 , between 2:00 p.m. and 7:00 p.m. to the Plantation Community Church, 6501 West Broward Boulevard, Plantation, FL 33317 <input type="checkbox"/> Hand-delivered by/before Wednesday, February 8, 2017 to Judy Kaplan's house-please call first for confirmation-954-753-5493 <input type="checkbox"/> Shipped , quilt <i>must be</i> received at Judy Kaplan's address no later than February 8, 2017 .	
Entry Type/Cost: <input type="checkbox"/> Judged, sponsoring Broward guild member/\$10.00 per quilt <input type="checkbox"/> Judged, non-guild member/\$15.00 per quilt (Choose one) <input type="checkbox"/> Exhibit only/\$8.00 per quilt <input type="checkbox"/> Challenge quilt/no fee Make check payable to: Broward Quilt Expo, Inc.	
Attach two (2) full-view non-returnable color photos per quilt. If you are entering a miniature quilt, photograph a ruler next to the quilt. Identify each photo on the back with your name, name of the quilt, and an arrow indicating the top of the quilt. See rule # 10.	
Entrant's Signature (Required):	Date:
Each quilt entered must have its own form and two full-view photographs. <i>This completed form, photographs, and one check for all the appropriate fees, must be received by Judy by February 8, 2017 - this deadline includes ALL SHIPPED QUILTS!</i> Each quilt <i>must</i> be in its own labeled pillowcase, no exceptions. See rule #5. Questions? Judy: 954-753-5493 or quiltentry@browardquiltexpo.com Send to Broward Quilt Expo, Inc., c/o Judy Kaplan, 10346 NW 4th Street, Coral Springs, FL 33071 or enter your quilts online.	



BROWARD QUILT EXPO

P.O. Box 460621

Ft. Lauderdale, FL 33346

YOUR INFORMATION PACKET FOR THE

14th Biennial Quilt Show and Vendor Marketplace March 9-11, 2017

Featuring National Teachers

Nancy Mahoney & Sherri Lynn Wood

- Attend the **Sherri Lynn Wood** Lecture / Presentation of Awards and Ribbons on March 8th •
 - More than 30 Marketplace Vendors • BQE-tique – shop for quilt-related items •
- Judged Quilt Show with Cash Prizes • Challenge Quilt Competition • Special Exhibits •
- Miniature Quilt Auctions - Live Auction on Saturday, PLUS Online Auction w/ “**Buy it Now**” •
 - Basket Walk Raffle • Six Guild Quilt Raffles • Professional Quilt Appraiser •

Visit our user-friendly website for more information about the show, to register, pay online for workshops, buy lecture tickets, to enter your quilts, and more!

www.browardquiltexpo.com