



## COMMERCIAL FISHERIES RESEARCH FOUNDATION

P.O. Box 278, Saunderstown, RI 02874

Phone: (401) 515-4892 | Fax: (401) 515-3537

[www.cfrfoundation.org](http://www.cfrfoundation.org)

### **Directions to the Commercial Fisheries Research Foundation**

Located in the Commercial Fisheries Center Building  
East Farm Campus, University of Rhode Island, Kingston, RI

#### Coming from the North:

From Providence, take Interstate I-95 South to Exit 9 for Rt. 4 (left exit) —you will see signs for the towns of East Greenwich and North Kingstown. Continue south on Rt. 4 for approximately 10 miles (through 2 traffic lights) until it turns into Rt. 1. Continue approximately 3 miles on Rt. 1 until you come to a major intersection (Rt. 1 and Rt. 138 west). Turn right at this intersection and continue on Rt. 138 west for approximately 4 miles. Take a left at the first traffic light in Kingston to head south on Rt. 108. Continue on Rt. 108 for 0.5 miles, then take a left onto East Farm (green and white sign). Upon entering the campus, bear right to go around the duck pond, then take two immediate rights. The Commercial Fisheries Center Building #61B is the second building on the left. It has a sign with bouys next to it. Parking is available in front of the building (see picture). The CFRF office is on the top floor.

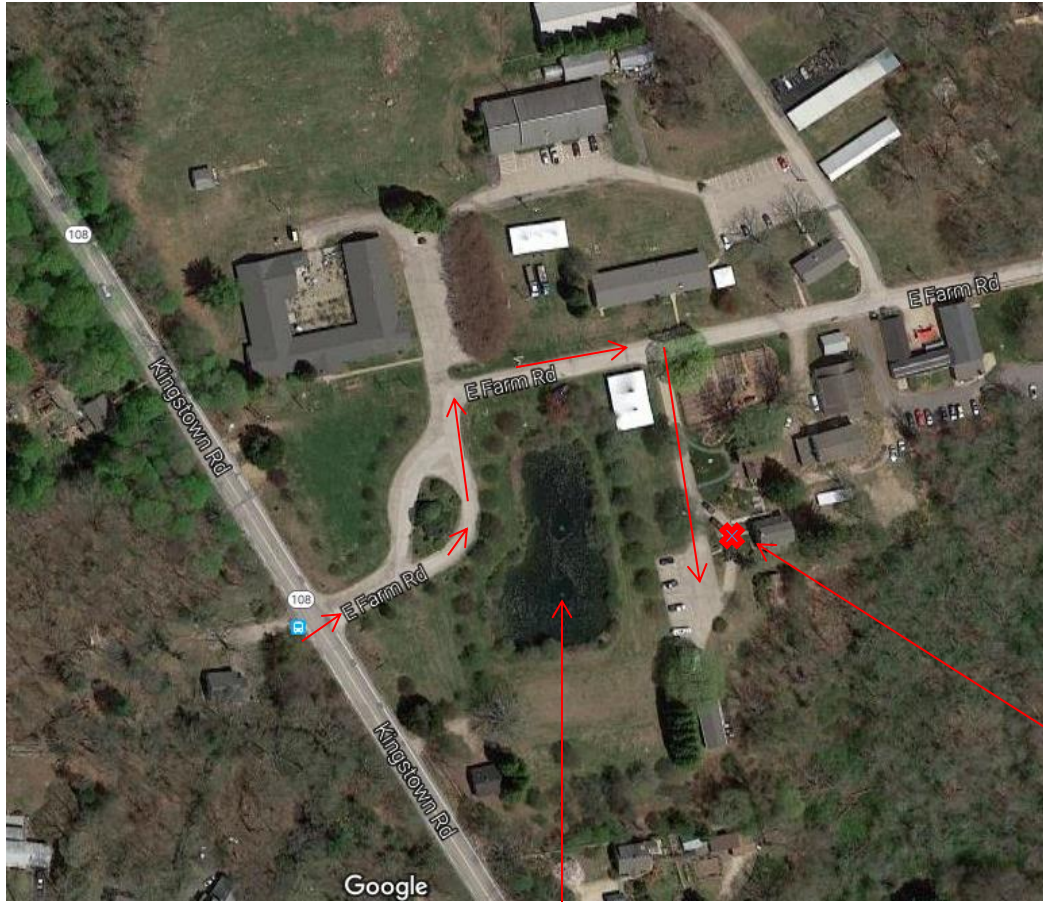
From New Bedford or Cape Cod, take Interstate 195 West to Exit 8A for Rt. 24 South (Tiverton/Newport, RI). Follow Rt. 24 South into Rhode Island, then merge onto Rt. 114 South. Follow 114 South for approximately 6 miles, then take a right onto Coddington Highway. Continue on Coddington Highway for 1.5 miles. At the traffic circle, take the third exit onto Admiral Kalbfus Rd. toward Jamestown, RI. Bear right to follow Rt. 138 west. Follow Rt. 138 west over the Newport (toll) bridge and Jamestown Bridge, then bear left to get on Rt. 1 south. Continue approximately 3 miles on Rt. 1 until you come to a major intersection (Rt. 1 and Rt. 138 west). Turn right at this intersection and continue on Rt. 138 west for approximately 4 miles. Take a left at the first traffic light in Kingston to head south on Rt. 108. Continue on Rt. 108 for 0.5 miles, then take a left onto East Farm (green and white sign). Upon entering the campus, bear right to go around the duck pond, then take two immediate rights. The Commercial Fisheries Center Building #61B is the second building on the left. It has a sign with bouys next to it. Parking is available in front of the building (see picture). The CFRF office is on the top floor.

#### Coming from the South:

From Connecticut, take Interstate 95 north to exit 3 toward Kingston, RI (Rt. 138 east). Follow Rt. 138 east for approximately 10 miles. Continue through the URI main campus, then take a right at the intersection of Rt. 138 and Rt. 108 to head south on Rt. 108. Continue on Rt. 108 for 0.5 miles, then take a left onto East Farm (green and white sign). Upon entering the campus, bear right to go around the duck pond, then take two immediate rights. The Commercial Fisheries Center Building #61B is the second building on the left. It has a sign with bouys next to it. Parking is available in front of the building (see picture). The CFRF office is on the top floor.

From southern Rhode Island, take Rt. 1 north until you come to the intersection of Rt. 1 and Rt. 138 west. Take a left onto Rt. 138 West. Take a left at the first traffic light in Kingston to head south on Rt. 108. Continue on Rt. 108 for 0.5 miles, then take a left onto East Farm (green and white sign). Upon entering the campus, bear right to go around the duck pond, then take two immediate rights. The Commercial Fisheries Center Building #61B is the second building on the left. It has a sign with bouys next to it. Parking is available in front of the building (see picture). The CFRF office is on the top floor.

From Rt. 108 Kingstown Road to the Commercial Fisheries Research Foundation:



Duck Pond

Commercial Fisheries Center (CFRF office on top floor)

The Commercial Fisheries Center of Rhode Island (CFRF office on top floor):

