



M I N I · B U I L D I N G

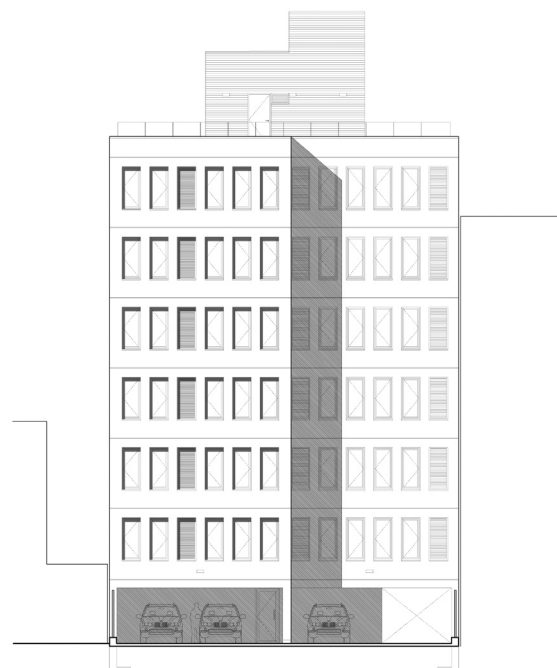




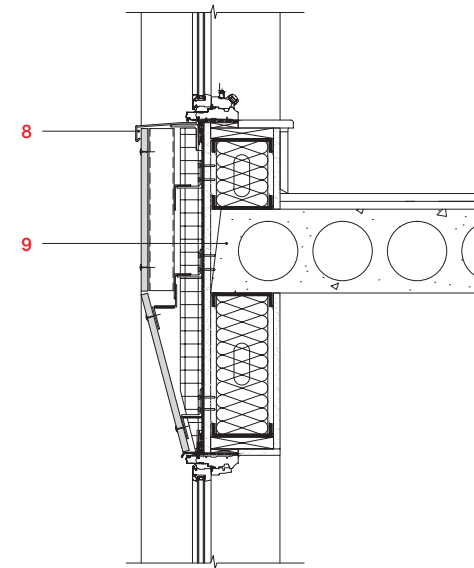
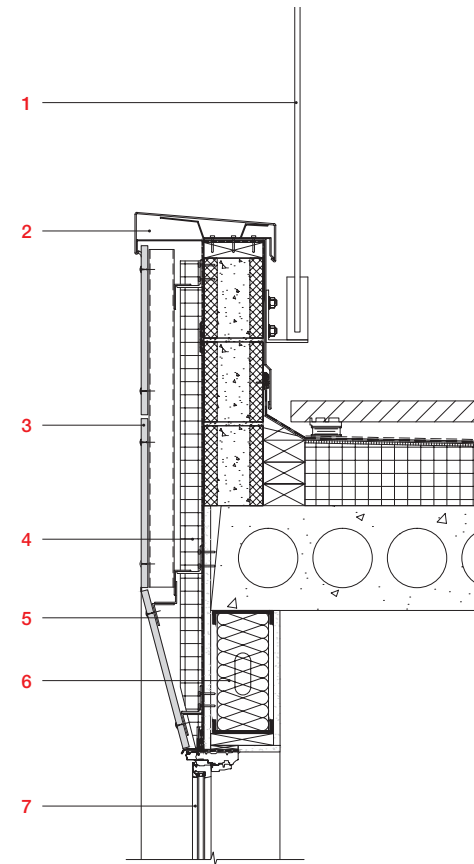
1 Street facade close up



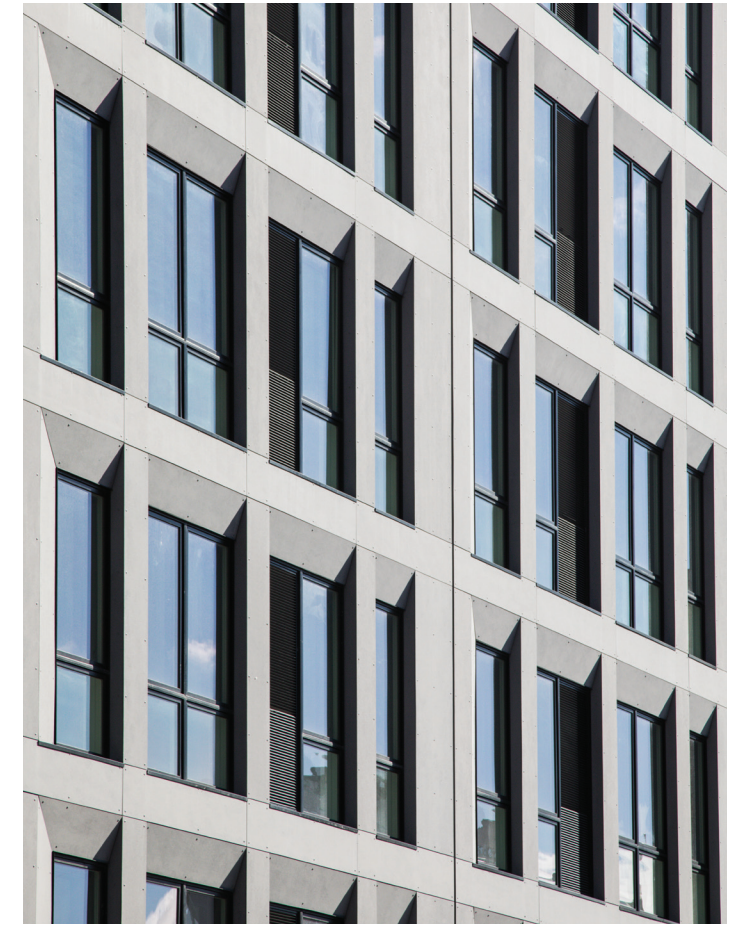
STREET ELEVATION



REAR ELEVATION

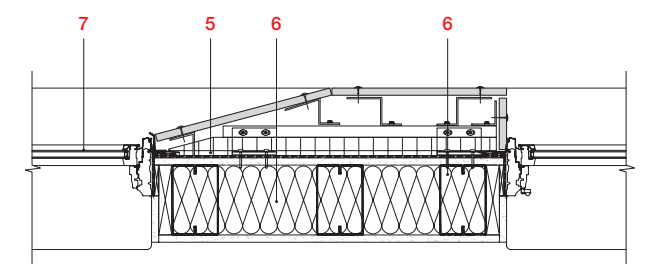
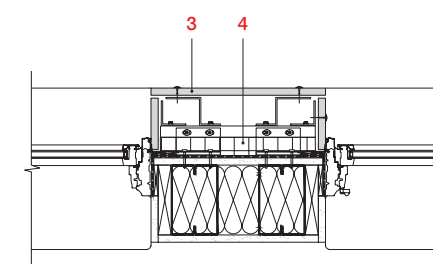


VERTICAL WALL SECTION



1 Street facade close up 1 Entry close up

- 1 GLASS RAILING
- 2 ALUMINUM COPING
- 3 FIBER CEMENT PANEL
- 4 RIGID INSULATION
- 5 MOISTURE BARRIER
- 6 BATT INSULATION & STEEL STUDS
- 7 DOUBLE GLAZED WINDOW
- 8 ALUMINUM SILL
- 9 HOLLOW CORE PLANK



HORIZONTAL WALL SECTION