

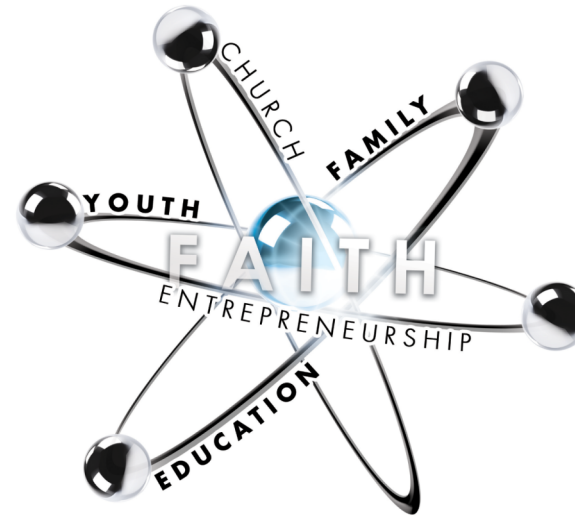


heart of God church

youth policies & guidelines

an excerpt

information for parents



In HOGC, Family, Education and Youth are three of our Core Values.

We always teach youths to balance family, church and school, to both do good AND do well. This forms a stable tripod that allows them to reach their full potential in life.



“And Jesus increased in wisdom and stature, and in favor with God and men.” Luke 2:52

YOUTH

EDUCATION

FAMILY

While we want to have fun, it's all about safety first! Our pastors teach about setting boundaries and borders, so here are some boundaries we've set for our youth.

Since the Academic Excellence (AE) Programme was launched in 2005, we have seen students improving in their grades, coming in top in their schools and growing in curiosity and confidence as they apply the principles and wisdoms of AE. Every July, we kick-off our yearly Academic Excellence Programme with these initiatives:

We know parenting teens can be challenging and here are some steps we have taken to supplement your efforts to provide a positive environment at home.

SAFETY GUIDELINES & WISDOMS

ACADEMIC EXCELLENCE

FAMILY-FRIENDLY POLICIES

NO RISKY ACTIVITIES



No Water-Based Activities
E.g. swimming & water theme parks



No Activities on Other Islands
Except Sentosa



No Trampoline Parks



No Alcohol
No alcoholic content in food & beverage



No Cycling on Roads
Cycling at parks (e.g. East Coast, Pasir Ris park) allowed. Must be accompanied by an older HOGC youth at least 17 years old.

GENERAL GUIDELINES



Rule of Three
Persons of the opposite gender should not be alone together; there should be three people together at any point of time, in the combination of 2 females + 1 male.



Stay Overs / Church Activities Past 12 am
Parental consent forms required for church stay overs and/or church activities that end beyond 12 am.



Water Baptism
Parental consent forms required for those under 21.



Academic Excellence (AE) Open House

- We dedicate a few weekends in July to talk about AE.
- Youth are encouraged to invite their parents and teachers.
- Our leaders will be present to discuss each child's / student's academic progress.



Study Rule

- From July, we generally encourage students to complete 15 hours of study per week outside of their regular school hours.
- Enforcement is based on students' honesty. Thus, we encourage parents to monitor their child's revision as well.



Balancing Commitment

- **During their 'O' Level year**, students must meet an L1R5 of <20 for leadership & an L1R5 of <25 for ministry.



Prizes & Rewards

- Each year, we encourage and motivate our youths by rewarding those who have scored well in their major exams*.
- Over the last 10 years, we have given out more than \$50,000 worth of prizes in the form of cash, vouchers, iPads, iPhones, iPods and so on.

*We reward those who have scored at least 200 points for PSLE, 20 points and below for O Levels and entry into any one of our local universities for A Levels. We also reward our Top Student and Most Improved Student.



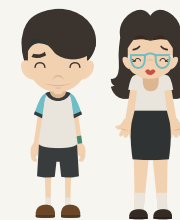
Family-Friendly Service Timings

- Services are held at 1:30 pm on Saturdays.
- This is so that youths can still meet up with their families for brunch or dinner.



Breaks For Family Bonding

- Our church is closed during Chinese New Year.
- There are no services so that the youths can spend quality time with their family.



For more info:
www.heartofGodchurch.org



@hogc



heart of God church

For more information on our Academic Excellence programme, visit www.hogcae.com

an excerpt of
HEART OF GOD CHURCH YOUTH POLICIES & GUIDELINES