

**Fabrics:** Choose two contrasting fabrics (or fabric groups), illustrated below as tan (light) and brown (dark).  
All Seam allowances are 1/4"

**Cutting Instructions** for one 12½" block (12" finished)

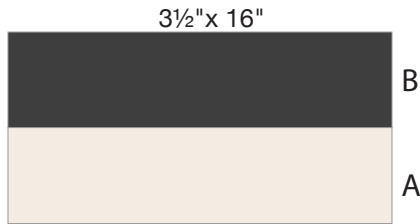
- |                         |                        |
|-------------------------|------------------------|
| <b>Fabric A (light)</b> | <b>Fabric B (dark)</b> |
| 1 strip 3½"x 16"        | 1 strip 3½"x 16"       |
| 1 strip 3½"x 8"         | 1 strip 3½"x 8"        |
| 2 strips 2"x 8"         | 2 strips 2"x 8"        |

**Materials** for one 12½" block (12" finished)  
\*4 Blocks make one section of the Bespoke BOM

- |                           |                  |
|---------------------------|------------------|
| <b>1 Block:</b>           | <b>4 Blocks</b>  |
| 1/8 yard Fabric A (light) | 1/2 yard (light) |
| 1/8 yard Fabric B (dark)  | 1/2 yard (dark)  |

**Herringbone Twill Block**

Sew the strip sets \*All seam allowances are ¼".



**Strip Set 1**  
-Stitch a Fabric (A) 3½"x 16" strip to a Fabric (B) 3½"x 16" strip. Press.  
-Subcut into (8) 2" pieces.

(cut 8)



**Strip Set 2**  
-Stitch a Fabric (B) 2"x 8" strip to either side a Fabric (A) 3½"x 8" strip. Press.  
-Subcut into (4) 2" pieces.

(cut 4)

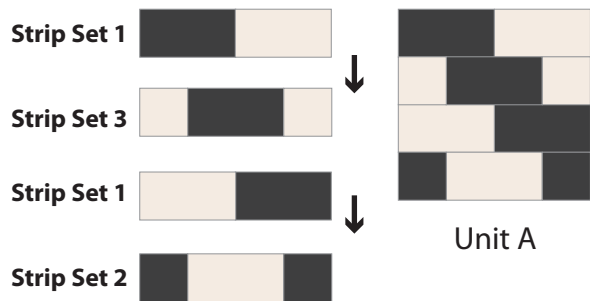


**Strip Set 3**  
-Stitch a Fabric (A) 2"x 8" strip to either side of a Fabric (B) 3½"x 8" strip. Press.  
-Subcut into (4) 2" pieces.

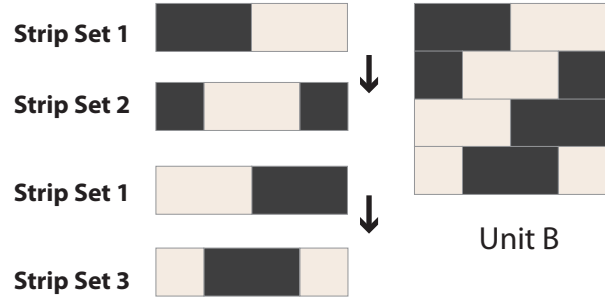
(cut 4)

**Assemble the Units**

Stitch together as illustrated, rotating the strip sets as needed. Each unit is 6½" (6" finished). 4 units = one block.

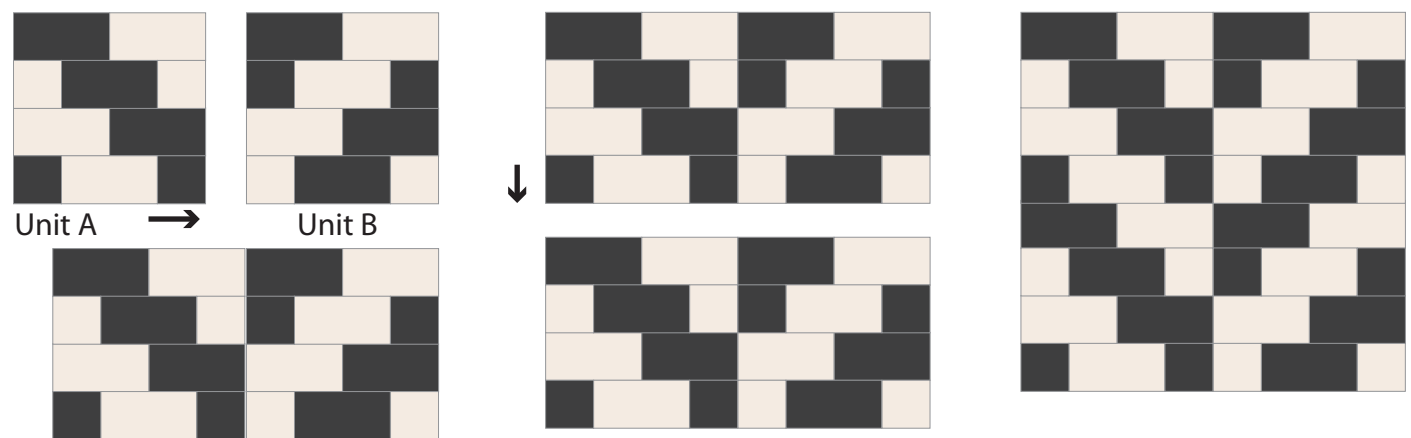


**Unit A:** (2) Strip Set 1s, (1) Strip Set 2, (1) Strip Set 3  
To nest seams, press seam allowances down.



**Unit B:** (2) Strip Set 1s, (1) Strip Set 2, (1) Strip Set 3  
To nest seams, press seam allowances up.

**Assemble the Block**



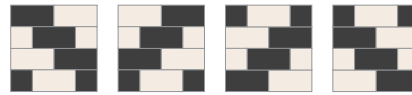
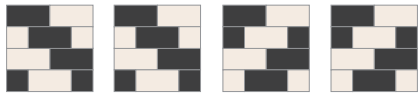
1. Stitch Unit A to Unit B.  
Repeat with second set. Press.

2. Stitch the AB units together. Press.

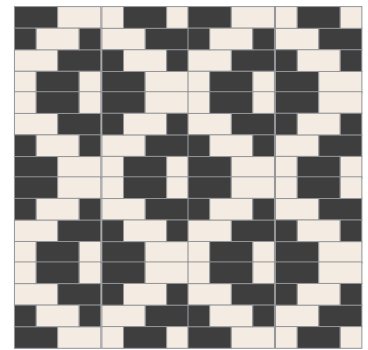
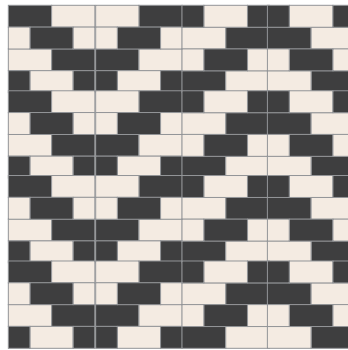
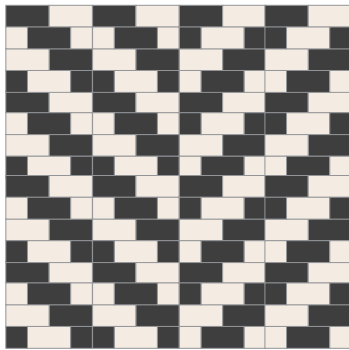
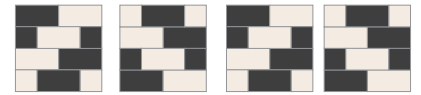
Hooray! You made it!

Try these fun block variations!

Make a block unit only unit A pieces.

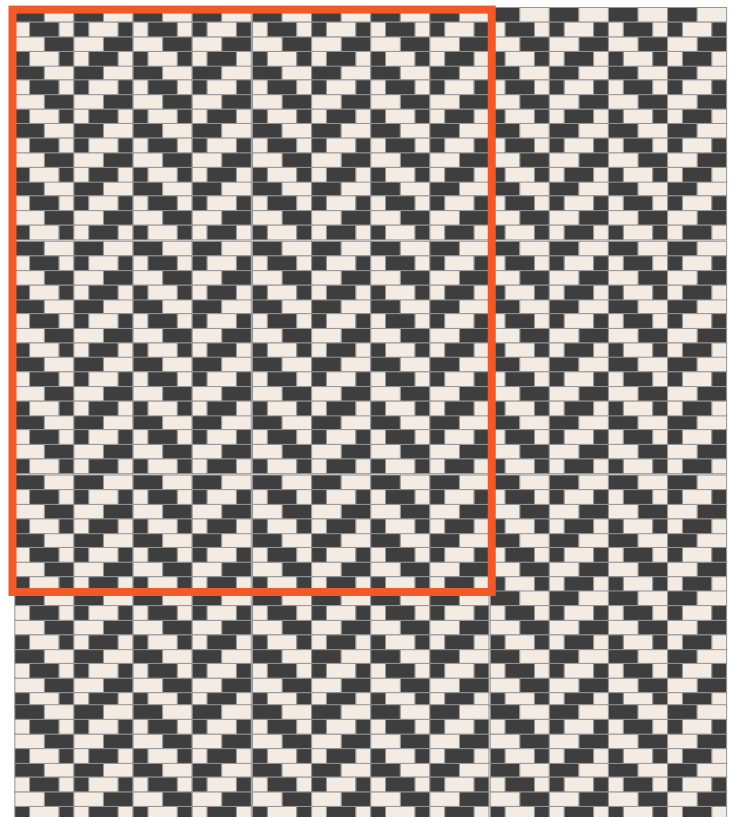
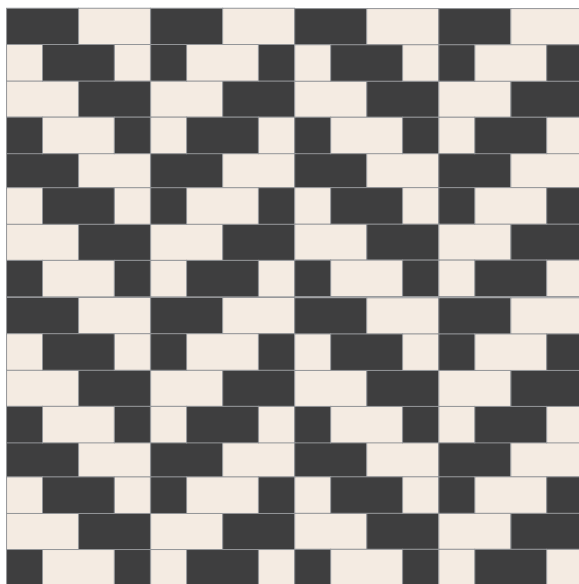


Make a block unit only unit B pieces.



**PMQG 2018 BOM** Assemble 4 blocks for a 24" square

Make a 48" x 60" lap or baby quilt with 20 blocks (4 x 5)  
 Make a 72" x 84" twin or throw quilt with 42 blocks (6 x 7)



Make it your own!  
 Share your Bespoke Herringbone Blocks  
 on social media with these tags:  
**PMQG2018BOM**  
**#BespokeBOM**