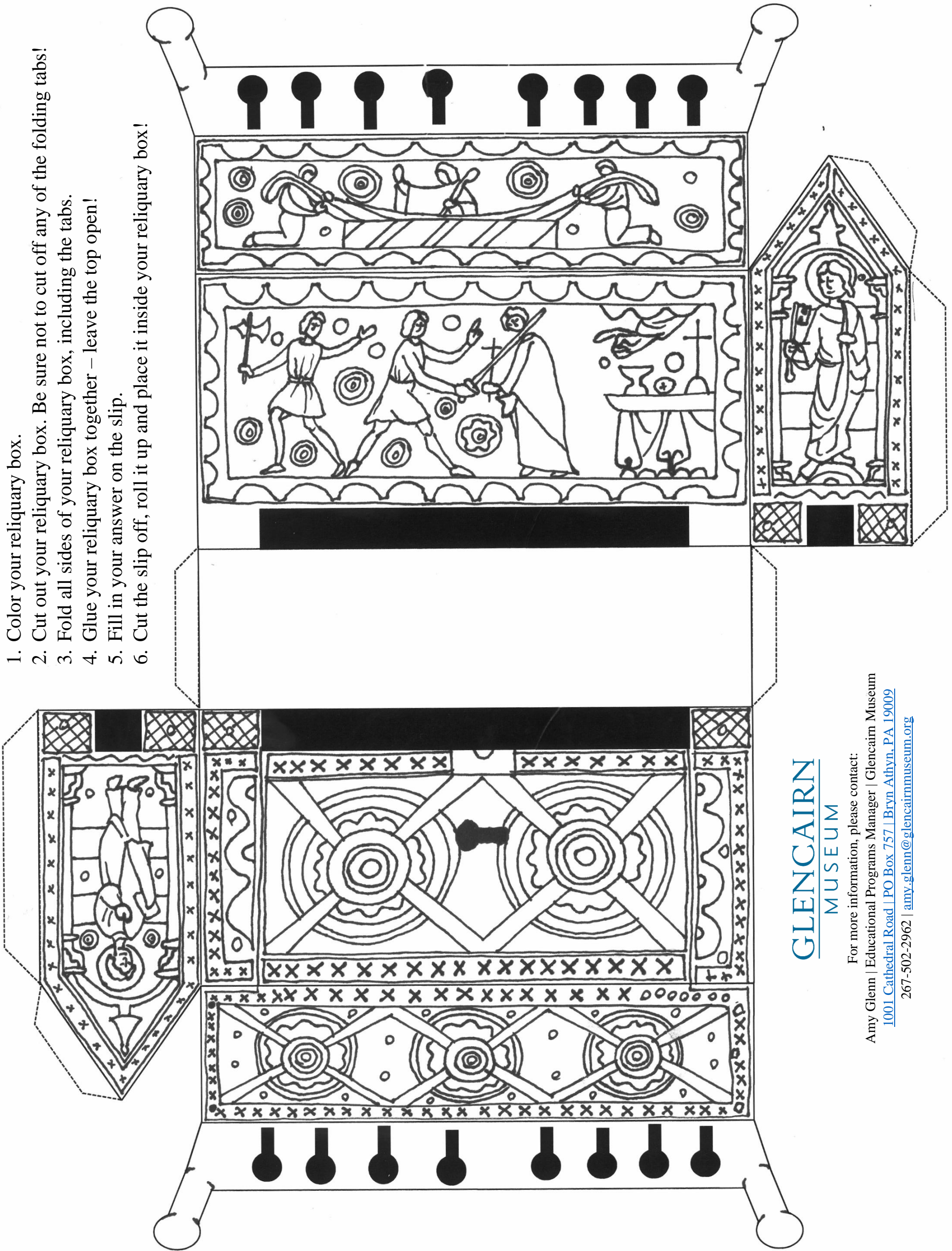


Instructions

1. Color your reliquary box.
2. Cut out your reliquary box. Be sure not to cut off any of the folding tabs!
3. Fold all sides of your reliquary box, including the tabs.
4. Glue your reliquary box together – leave the top open!
5. Fill in your answer on the slip.
6. Cut the slip off, roll it up and place it inside your reliquary box!



GLENCAIRN
MUSEUM

For more information, please contact:
 Amy Glenn | Educational Programs Manager | Glencairn Museum
 1001 Cathedral Road | PO Box 757 | Bryn Athyn, PA 19009
 267-502-2962 | amy.glenn@glencairnmuseum.org

-----✂-----Cut here, write your answer on the line, roll up this slip and put it in your finished box!-----✂-----

This beautifully enameled 13th century reliquary box from Glencairn’s collection originally contained a fragment of the body of Saint Thomas Becket, whose death you can see depicted on the box. Reliquaries were a focus for medieval pilgrims who journeyed from church to church hoping to claim the power of Christian saints by coming closer to their physical remains. If you were to choose a special, treasured item to place inside your reliquary box, what would it be? _____

To see the object in Glencairn’s collection, [visit our website here](#). To learn more about it, visit our *Glencairn Museum News* [article here](#).