

# AN ARAB SPRING, 1975

---

A black carpet - and placed on it the book 'An Arab Spring' and pittas with only their black sides facing upward.

# FAISAL, KING OF ARABIA, 1975

---

A black carpet - and placed on it the book 'Faisal Bin Abdulaziz Alrahman King of Saudi Arabia', and pittas with their black sides facing upward, only.

# FAISAL-MOSHE 1975-1981

---

A black carpet - and placed on it the image of Faisal with one eye and an eye-patch, and pittas with their black sides facing upward, only.

# PITTAS

---

A black carpet - and placed on it pittas with only their black side facing upward, or pittas whose natural sides or their black sides are facing upward, or a black carpet with pittas whose natural sides are facing upward, only.

YOSEF JOSEPH DADOUNE

# LIST OF THE PICTURES

—

# AN ARAB SPRING, 1975

10 PICTURES

A black carpet - on which is placed the book 'An Arab Spring', and pittas with their black sides facing upward, only.

4



Picture. 01

One pitta

Picture. 02

One pitta and the book 'An Arab Spring'

Picture. 03

3 pittas and the book 'An Arab Spring'

Picture. 04

4 pittas and the book 'An Arab Spring'

Picture. 05

6 pittas and the book 'An Arab Spring'

Picture. 06

7 pittas and the book 'An Arab Spring'

Picture. 07

9 pittas and the book 'An Arab Spring'

Picture. 08

11 pittas and the book 'An Arab Spring'

Picture. 09

13 pittas and the book 'An Arab Spring'

Picture. 10

14 pittas and the book 'An Arab Spring'

5

# FAISAL, KING OF ARABIA, 1975

8 PICTURES

A black carpet - on which is placed the book 'Faisal Bin Abdulaziz Alrahman King of Saudi Arabia', and pittas with their black sides facing upward, only

6

7



Picture. 01

The book 'Faisal Bin Abdulaziz Alrahman King of Saudi Arabia'

Picture. 02

The book 'Faisal Bin Abdulaziz Alrahman King of Saudi Arabia' and 2 pittas with their black sides facing upward

Picture. 03

The book 'Faisal Bin Abdulaziz Alrahman King of Saudi Arabia' and 3 pittas with their black sides facing upward

Picture. 04

The book 'Faisal Bin Abdulaziz Alrahman King of Saudi Arabia' and 5 pittas with their black sides facing upward

Picture. 05

The book 'Faisal Bin Abdulaziz Alrahman King of Saudi Arabia' and 7 pittas with their black sides facing upward

Picture. 06

The book 'Faisal Bin Abdulaziz Alrahman King of Saudi Arabia', and 9 pittas with their black sides facing upward

Picture. 07

The book 'Faisal Bin Abdulaziz Alrahman King of Saudi Arabia', and 11 pittas with their black sides facing upward

Picture. 08

The book 'Faisal Bin Abdulaziz Alrahman King of Saudi Arabia' and 13 pittas with their black sides facing upward

# FAISAL-MOSHE

## 1975-1981

9 PICTURES

A black carpet - on which is placed an image of Faisal with one eye and an eye-patch, with pittas whose black sides are facing upward, only.



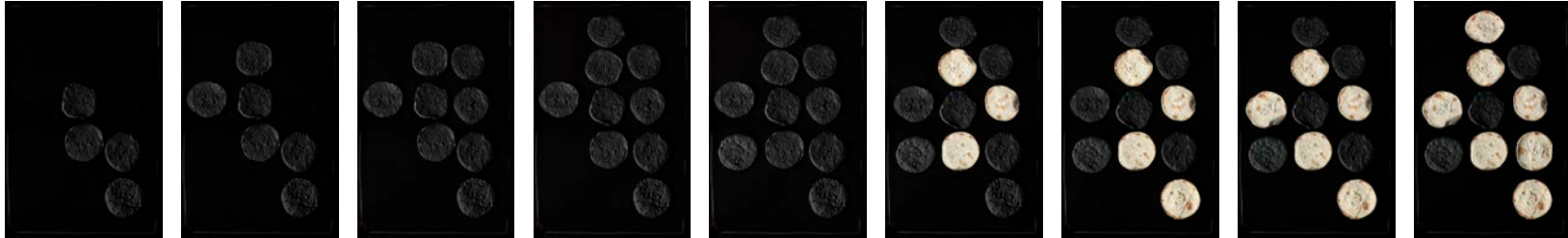
|                    |   |  |  |  |  |  |   |   |
|--------------------|---|--|--|--|--|--|---|---|
| <u>Picture. 01</u> | <u>Picture. 02</u>  | <u>Picture. 03</u>   | <u>Picture. 04</u>   | <u>Picture. 05</u>   | <u>Picture. 06</u>   | <u>Picture. 07</u>   | <u>Picture. 08</u>  | <u>Picture. 09</u>  |
| 'Faisal-Moshe'     | 'Faisal-Moshe' and one pitta whose black side is facing upward. | 'Faisal-Moshe' and 2 pittas with their black sides facing upward | 'Faisal-Moshe' and 3 pittas with their black sides facing upward | 'Faisal-Moshe' and 5 pittas with their black sides facing upward | 'Faisal-Moshe' and 7 pittas with their black sides facing upward | 'Faisal-Moshe' and 9 pittas with their black sides facing upward | 'Faisal-Moshe' and 11 pittas with their black sides facing upward | 'Faisal-Moshe' and 13 pittas with their black sides facing upward |

# PITTAS

12 PICTURES

A black carpet - on which are placed pittas with their black sides facing upward only; or a black carpet on which are placed pittas with their natural sides facing upward, or their black sides facing upward only; or a black carpet with pittas whose natural sides are facing upward, only.

10



Picture. 01

4 pittas

Picture. 02

6 pittas

Picture. 03

8 pittas

Picture. 04

9 pittas

Picture. 05

10 pittas

Picture. 06

3 pittas with their natural sides facing upward, compared with 7 pittas whose black sides are facing upward

Picture. 07

4 pittas with their natural sides facing upward, compared with 6 pittas with their black sides facing upward

Picture. 08

5 pittas with their natural sides facing upward, compared to 5 pittas with their black sides facing upward

Picture. 09

7 pittas with their natural sides facing upward, compared with 3 pittas with their black sides facing upward



Picture. 10

8 pittas with their natural sides facing upward, compared with 2 pittas with their black sides facing upward

Picture. 11

9 pittas with their natural sides facing up, compared with one pitta whose black side is facing upward

Picture. 12

10 pittas with their natural sides facing upward

# FOLLOWING IS THE LIST OF DISPLAY COMBINATIONS

—  PICTURES



Counting from one pitta whose black side is facing upward only; the book 'An Arab Spring' and one pitta whose black side is facing upward; up to 14 pittas whose black sides are facing upward:



Picture. 01

One pitta whose black side is facing upward

Picture. 02

The book 'An Arab Spring' and one pitta whose black side is facing upward

Picture. 03

The book 'An Arab Spring' and 3 pittas with their black sides facing upward

Picture. 04

The book 'An Arab Spring' and 4 pittas with their black sides facing upward

Picture. 05

The book 'An Arab Spring' and 6 pittas with their black sides facing upward

Picture. 06

The book 'An Arab Spring' and 7 pittas with their black sides facing upward

Picture. 07

The book 'An Arab Spring' and 9 pittas with their black sides facing upward

Picture. 08

The book 'An Arab Spring' and 11 pittas with their black sides facing upward

Picture. 09

The book 'An Arab Spring' and 13 pittas with their black sides facing upward

Picture. 10

The book 'An Arab Spring' and 14 pittas with their black sides facing upward





Counting from the book 'An Arab Spring' and 14 pittas with their black sides facing upward - and up to one pitta with its black side facing upward:



Picture. 01

The book 'An Arab Spring' and 14 pittas with their black sides facing upward

Picture. 02

The book 'An Arab Spring' and 13 pittas with their black sides facing upward

Picture. 03

The book 'An Arab Spring' and 11 pittas with their black sides facing upward

Picture. 04

The book 'An Arab Spring' and 9 pittas with their black sides facing upward

Picture. 05

The book 'An Arab Spring' and 7 pittas with their black sides facing upward

Picture. 06

The book 'An Arab Spring' and 6 pittas with their black sides facing upward

Picture. 07

The book 'An Arab Spring' and 4 pittas with their black sides facing upward

Picture. 08

The book 'An Arab Spring' and 3 pittas with their black sides facing upward

Picture. 09

The book 'An Arab Spring' and one pitta whose black side is facing upward

Picture. 10

One pitta whose black side is facing upward

FAISAL, KING OF ARABIA 1975



COMBINATION 01/02

Counting from the book 'Faisal Bin Abdulaziz Alrahman King of Saudi Arabia', only; the book, with 2 pittas whose black sides are facing upward, and up to the book with 13 pittas with their black sides facing upward.



Picture. 01

The book 'Faisal Bin Abdulaziz Alrahman King of Saudi Arabia'

Picture. 02

The book 'Faisal Bin Abdulaziz Alrahman King of Saudi Arabia' and 2 pittas with their black sides facing upward

Picture. 03

The book 'Faisal Bin Abdulaziz Alrahman King of Saudi Arabia' and 3 pittas with their black sides facing upward

Picture. 04

The book 'Faisal Bin Abdulaziz Alrahman King of Saudi Arabia' and 5 pittas with their black sides facing upward

Picture. 05

The book 'Faisal Bin Abdulaziz Alrahman King of Saudi Arabia' and 7 pittas with their black sides facing upward

Picture. 06

The book 'Faisal Bin Abdulaziz Alrahman King of Saudi Arabia', and 9 pittas with their black sides facing upward

Picture. 07

The book 'Faisal Bin Abdulaziz Alrahman King of Saudi Arabia', and 11 pittas with their black sides facing upward

Picture. 08

The book 'Faisal Bin Abdulaziz Alrahman King of Saudi Arabia' and 13 pittas with their black sides facing upward

FAISAL, KING OF  
ARABIA 1975

COMBINATION 02/02

Counting from the book 'Faisal Bin Abdulaziz Alrahman King of Saudi Arabia' and 13 pittas with their black sides facing upward - up to the book 'Faisal Bin Abdulaziz Alrahman King of Saudi Arabia', only.



Picture. 01

The book 'Faisal Bin Abdulaziz Alrahman King of Saudi Arabia' and 13 pittas with their black sides facing upward

Picture. 02

The book 'Faisal Bin Abdulaziz Alrahman King of Saudi Arabia', and 11 pittas with their black sides facing upward

Picture. 03

The book 'Faisal Bin Abdulaziz Alrahman King of Saudi Arabia', and 9 pittas with their black sides facing upward

Picture. 04

The book 'Faisal Bin Abdulaziz Alrahman King of Saudi Arabia' and 7 pittas with their black sides facing upward

Picture. 05

The book 'Faisal Bin Abdulaziz Alrahman King of Saudi Arabia' and 5 pittas with their black sides facing upward

Picture. 06

The book 'Faisal Bin Abdulaziz Alrahman King of Saudi Arabia' and 3 pittas with their black sides facing upward

Picture. 07

The book 'Faisal Bin Abdulaziz Alrahman King of Saudi Arabia' and 2 pittas with their black sides facing upward

Picture. 08

The book 'Faisal Bin Abdulaziz Alrahman King of Saudi Arabia' - only

FAISAL-MOSHE  
1975-1981



COMBINATION 01/02

Counting from a picture of 'Faisal-Moshe' only, and 'Faisal-Moshe' with one pitta whose black side is facing upward - and up to 13 pittas with their black sides facing upward



|                    |   |  |  |  |  |  |   |   |
|--------------------|---|--|--|--|--|--|---|---|
| <u>Picture. 01</u> | <u>Picture. 02</u>  | <u>Picture. 03</u>   | <u>Picture. 04</u>   | <u>Picture. 05</u>   | <u>Picture. 06</u>   | <u>Picture. 07</u>   | <u>Picture. 08</u>  | <u>Picture. 09</u>  |
| 'Faisal-Moshe'     | 'Faisal-Moshe' and one pitta whose black side is facing upward. | 'Faisal-Moshe' and 2 pittas with their black sides facing upward | 'Faisal-Moshe' and 3 pittas with their black sides facing upward | 'Faisal-Moshe' and 5 pittas with their black sides facing upward | 'Faisal-Moshe' and 7 pittas with their black sides facing upward | 'Faisal-Moshe' and 9 pittas with their black sides facing upward | 'Faisal-Moshe' and 11 pittas with their black sides facing upward | 'Faisal-Moshe' and 13 pittas with their black sides facing upward |

FAISAL-MOSHE  
1975-1981



COMBINATION 02/02

Counting from 'Faisal-Moshe' and  
13 to 1 pittas with their black sides  
facing upward, and up to a picture of  
'Faisal-Moshe', only



**Picture. 01**  
'Faisal-Moshe' and 13  
pittas with their black  
sides facing upward

**Picture. 02**  
'Faisal-Moshe' and 11  
pittas with their black  
sides facing upward

**Picture. 03**  
'Faisal-Moshe' and 9  
pittas with their black  
sides facing upward

**Picture. 04**  
'Faisal-Moshe' and 7  
pittas with their black  
sides facing upward

**Picture. 05**  
'Faisal-Moshe' and 5  
pittas with their black  
sides facing upward

**Picture. 06**  
Faisal-Moshe' and 3  
pittas with their black  
sides facing upward

**Picture. 07**  
'Faisal-Moshe' and 2  
pittas with their black  
sides facing upward

**Picture. 08**  
'Faisal-Moshe' and  
one pitta whose black  
side is facing upward

**Picture. 09**  
'Faisal-Moshe'

FAISAL-MOSHE  
1975-1981  
FAISAL, KING OF  
ARABIA 1975



INTEGRATED  
COMBINATION 01/04

Counting from 'Faisal-Moshe' only, and 'Faisal-Moshe' with one pitta whose black side is facing upward, and up to 13 pittas with their black sides facing upward. Then the book 'Faisal Bin Abdulaziz Alrahman King of Saudi Arabia', only.



Picture. 01  
'Faisal-Moshe'

Picture. 02  
'Faisal-Moshe' and one pitta whose black side is facing upward.

Picture. 03  
'Faisal-Moshe' and 2 pittas with their black sides facing upward

Picture. 04  
'Faisal-Moshe' and 3 pittas with their black sides facing upward

Picture. 05  
'Faisal-Moshe' and 5 pittas with their black sides facing upward

Picture. 06  
'Faisal-Moshe' and 7 pittas with their black sides facing upward

Picture. 07  
'Faisal-Moshe' and 9 pittas with their black sides facing upward

Picture. 08  
'Faisal-Moshe' and 11 pittas with their black sides facing upward

Picture. 09  
'Faisal-Moshe' and 13 pittas with their black sides facing upward



Picture. 10  
The book 'Faisal Bin Abdulaziz Alrahman King of Saudi Arabia', and 13 pittas with their black sides facing upward

Picture. 11  
The book 'Faisal Bin Abdulaziz Alrahman King of Saudi Arabia', and 11 pittas with their black sides facing upward

Picture. 12  
The book 'Faisal Bin Abdulaziz Alrahman King of Saudi Arabia', and 9 pittas with their black sides facing upward

Picture. 13  
The book 'Faisal Bin Abdulaziz Alrahman King of Saudi Arabia' and 7 pittas with their black sides facing upward

Picture. 14  
The book 'Faisal Bin Abdulaziz Alrahman King of Saudi Arabia' and 5 pittas with their black sides facing upward

Picture. 15  
The book 'Faisal Bin Abdulaziz Alrahman King of Saudi Arabia' and 3 pittas with their black sides facing upward

Picture. 16  
The book 'Faisal Bin Abdulaziz Alrahman King of Saudi Arabia' and 2 pittas with their black sides facing upward

Picture. 17  
The book 'Faisal Bin Abdulaziz Alrahman King of Saudi Arabia'

FAISAL-MOSHE  
1975-1981  
FAISAL, KING OF  
ARABIA 1975



INTEGRATED  
COMBINATION 02/04

Counting from 'Faisal-Moshe' and from 13 pittas up to one pitta whose black side is facing upward, and then the book 'Faisal Bin Abdulaziz Alrahman King of Saudi Arabia' only, and the book 'Faisal Bin Abdulaziz

Alrahman King of Saudi Arabia' with two pittas with their black sides facing upward, and up to 13 pittas with their black sides facing upward.



Picture. 01  
'Faisal-Moshe' and 13 pittas with their black sides facing upward

Picture. 02  
'Faisal-Moshe' and 11 pittas with their black sides facing upward

Picture. 03  
'Faisal-Moshe' and 9 pittas with their black sides facing upward

Picture. 04  
'Faisal-Moshe' and 7 pittas with their black sides facing upward

Picture. 05  
'Faisal-Moshe' and 5 pittas with their black sides facing upward

Picture. 06  
Faisal-Moshe' and 3 pittas with their black sides facing upward

Picture. 07  
'Faisal-Moshe' and 2 pittas with their black sides facing upward

Picture. 08  
'Faisal-Moshe' and one pitta whose black side is facing upward

Picture. 09  
'Faisal-Moshe'



Picture. 10  
The book 'Faisal Bin Abdulaziz Alrahman King of Saudi Arabia'

Picture. 11  
The book 'Faisal Bin Abdulaziz Alrahman King of Saudi Arabia' and 2 pittas with their black sides facing upward

Picture. 12  
The book 'Faisal Bin Abdulaziz Alrahman King of Saudi Arabia' and 3 pittas with their black sides facing upward

Picture. 13  
The book 'Faisal Bin Abdulaziz Alrahman King of Saudi Arabia' and 5 pittas with their black sides facing upward

Picture. 14  
The book 'Faisal Bin Abdulaziz Alrahman King of Saudi Arabia' and 7 pittas with their black sides facing upward

Picture. 15  
The book 'Faisal Bin Abdulaziz Alrahman King of Saudi Arabia', and 9 pittas with their black sides facing upward

Picture. 16  
The book 'Faisal Bin Abdulaziz Alrahman King of Saudi Arabia', and 11 pittas with their black sides facing upward

Picture. 17  
The book 'Faisal Bin Abdulaziz Alrahman King of Saudi Arabia' and 13 pittas with their black sides facing upward

FAISAL, KING OF ARABIA 1975

FAISAL-MOSHE 1975-1981



INTEGRATED COMBINATION 03/04

Counting from the book 'Faisal Bin Abdulaziz Alrahman King of Saudi Arabia' only, and the book 'Faisal Bin Abdulaziz Alrahman King of Saudi Arabia' with from 2 to 13 pittas with their black sides facing upward;

then from 'Faisal-Moshe' and from 13 pittas with their black sides facing upward, and up to one pitta with its black side facing upward, to 'Faisal-Moshe' only.



Picture. 01

The book 'Faisal Bin Abdulaziz Alrahman King of Saudi Arabia'

Picture. 02

The book 'Faisal Bin Abdulaziz Alrahman King of Saudi Arabia' and 2 pittas with their black sides facing upward

Picture. 03

The book 'Faisal Bin Abdulaziz Alrahman King of Saudi Arabia' and 3 pittas with their black sides facing upward

Picture. 04

The book 'Faisal Bin Abdulaziz Alrahman King of Saudi Arabia' and 5 pittas with their black sides facing upward

Picture. 05

The book 'Faisal Bin Abdulaziz Alrahman King of Saudi Arabia' and 7 pittas with their black sides facing upward

Picture. 06

The book 'Faisal Bin Abdulaziz Alrahman King of Saudi Arabia' and 9 pittas with their black sides facing upward

Picture. 07

The book 'Faisal Bin Abdulaziz Alrahman King of Saudi Arabia' and 11 pittas with their black sides facing upward

Picture. 08

The book 'Faisal Bin Abdulaziz Alrahman King of Saudi Arabia' and 13 pittas with their black sides facing upward

Picture. 09

'Faisal-Moshe' and 13 pittas with their black sides facing upward

Picture. 10

'Faisal-Moshe' and 11 pittas with their black sides facing upward

Picture. 11

'Faisal-Moshe' and 9 pittas with their black sides facing upward

Picture. 12

'Faisal-Moshe' and 7 pittas with their black sides facing upward

Picture. 13

'Faisal-Moshe' and 5 pittas with their black sides facing upward

Picture. 14

Faisal-Moshe' and 3 pittas with their black sides facing upward

Picture. 15

'Faisal-Moshe' and 2 pittas with their black sides facing upward

Picture. 16

'Faisal-Moshe' and one pitta whose black side is facing upward

Picture. 17

'Faisal-Moshe'



FAISAL, KING OF ARABIA 1975

FAISAL-MOSHE 1975-1981



INTEGRATED COMBINATION 04/04

Counting from the book 'Faisal Bin Abdulaziz Alrahman King of Saudi Arabia', and from 13 to 2 pittas with their black sides facing upward, to the book 'Faisal Bin Abdulaziz Alrahman King of Saudi Arabia' only,

followed by 'Faisal-Moshe' only, and then from 1 to 13 pittas with their black sides facing upward.



Picture. 01

The book 'Faisal Bin Abdulaziz Alrahman King of Saudi Arabia' and 13 pittas with their black sides facing upward

Picture. 02

The book 'Faisal Bin Abdulaziz Alrahman King of Saudi Arabia', and 11 pittas with their black sides facing upward

Picture. 03

The book 'Faisal Bin Abdulaziz Alrahman King of Saudi Arabia', and 9 pittas with their black sides facing upward

Picture. 04

The book 'Faisal Bin Abdulaziz Alrahman King of Saudi Arabia', and 7 pittas with their black sides facing upward

Picture. 05

The book 'Faisal Bin Abdulaziz Alrahman King of Saudi Arabia', and 5 pittas with their black sides facing upward

Picture. 06

The book 'Faisal Bin Abdulaziz Alrahman King of Saudi Arabia', and 3 pittas with their black sides facing upward

Picture. 07

The book 'Faisal Bin Abdulaziz Alrahman King of Saudi Arabia', and 2 pittas with their black sides facing upward

Picture. 08

The book 'Faisal Bin Abdulaziz Alrahman King of Saudi Arabia'

Picture. 09

'Faisal-Moshe'

Picture. 10

'Faisal-Moshe' and one pitta whose black side is facing upward.

Picture. 11

'Faisal-Moshe' and 2 pittas with their black sides facing upward

Picture. 12

'Faisal-Moshe' and 3 pittas with their black sides facing upward

Picture. 13

'Faisal-Moshe' and 5 pittas with their black sides facing upward

Picture. 14

'Faisal-Moshe' and 7 pittas with their black sides facing upward

Picture. 15

'Faisal-Moshe' and 9 pittas with their black sides facing upward

Picture. 16

'Faisal-Moshe' and 11 pittas with their black sides facing upward

Picture. 17

'Faisal-Moshe' and 13 pittas with their black sides facing upward

Counting from I to IO, according to pittas whose black sides are facing upward.



Picture. 01

A pitta whose black side is facing upward, compared with 9 pittas whose natural sides are facing upward

Picture. 02

2 pittas with their black sides facing upward, compared with 8 pittas whose natural sides are facing upward

Picture. 03

3 pittas with their black sides facing upward, compared with 7 pittas whose natural sides are facing upward

Picture. 04

4 pittas with their black sides facing upward

Picture. 05

5 pittas with their black sides facing upward, compared with 5 pittas with their natural sides facing upward

Picture. 06

6 pittas with their black sides facing upward

Picture. 07

6 pittas with their black sides facing upward, compared with 4 pittas whose natural sides are facing upward

Picture. 08

7 pittas with their black sides facing upward, compared with 3 pittas with their natural sides facing upward

Picture. 09

8 pittas with their black sides facing upward

Picture. 10

9 pittas with their black sides facing upward

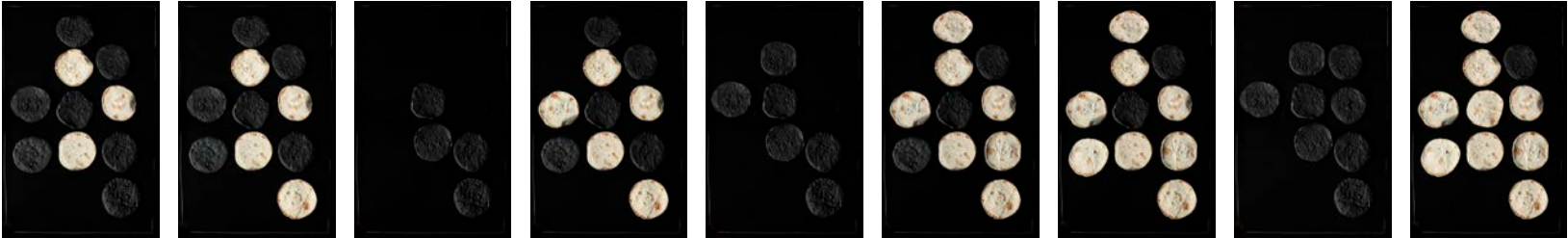
Picture. 11

10 pittas with their black sides facing upward

Picture. 12

10 pittas with their natural sides facing upward

Counting from 3 to 10, according to pittas whose natural sides are facing upward.



Picture. 01

3 pittas with their natural sides facing upward, compared with 7 pittas whose black sides are facing upward

Picture. 02

4 pittas with their natural sides facing upward, compared with 6 pittas whose black sides are facing upward

Picture. 03

4 pittas with their black sides facing upward

Picture. 04

5 pittas with their natural sides facing upward, compared with 5 pittas whose black sides are facing upward

Picture. 05

6 pittas with their black sides facing upward

Picture. 06

7 pittas with their natural sides facing upward, compared with 3 pittas whose black sides are facing upward

Picture. 07

8 pittas with their natural sides facing upward, compared with 2 pittas whose black sides are facing upward

Picture. 08

8 pittas with their black sides facing upward

Picture. 09

9 pittas with their natural sides facing upward, compared with one pitta with its black side facing upward

Picture. 10

9 pittas with their black sides facing upward

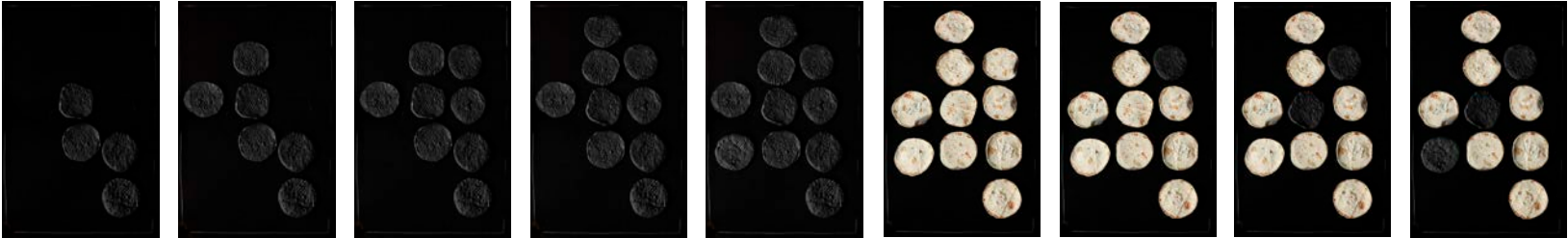
Picture. 11

10 pittas with their natural sides facing upward

Picture. 12

10 pittas with their black sides facing upward

Counting from 4 up to 10 pittas, whose black sides are facing upward only; and from 10 to 3 pittas whose natural sides are facing upward



Picture. 01

4 pittas with their black sides facing upward

Picture. 02

6 pittas with their black sides facing upward

Picture. 03

8 pittas with their black sides facing upward

Picture. 04

9 pittas with their black sides facing upward

Picture. 05

10 pittas with their black sides facing upward

Picture. 06

10 pittas with their natural sides facing upward

Picture. 07

9 pittas with their natural sides facing upward, compared with one pitta whose black side is facing upward

Picture. 08

8 pittas with their natural sides facing upward, compared with 2 pittas whose black sides are facing upward

Picture. 09

7 pittas with their natural sides facing upward, compared with 3 pittas whose black sides are facing upward

Picture. 10

5 pittas with their natural sides facing upward, compared with 5 pittas whose black sides are facing upward

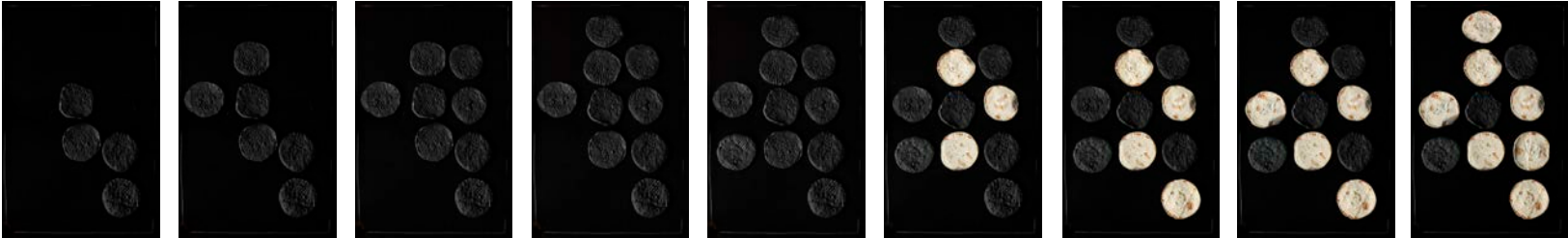
Picture. 11

4 pittas with their natural sides facing upward, compared with 6 pittas whose black sides are facing upward

Picture. 12

3 pittas with their natural sides facing upward, compared with 7 pittas whose black sides are facing upward

Counting from 4 to 10 pittas with their black sides facing upward only; and from 3 to 10 pittas whose natural sides are facing upward and with pittas whose black sides are facing upward:



Picture. 01

4 pittas with their black sides facing upward

Picture. 02

6 pittas with their black sides facing upward

Picture. 03

8 pittas with their black sides facing upward

Picture. 04

9 pittas with their black sides facing upward

Picture. 05

10 pittas with their black sides facing upward

Picture. 06

3 pittas with their natural sides facing upward, compared with 7 pittas with their black sides facing upward

Picture. 07

4 pittas with their natural sides facing upward, compared with 6 pittas with their black sides facing upward

Picture. 08

5 pittas with their natural sides facing upward, compared with 5 pittas with their black sides facing upward

Picture. 09

7 pittas with their natural sides facing upward, compared with 3 pittas with their black sides facing upward

Picture. 10

8 pittas with their natural sides facing upward, compared with 2 pittas with their black sides facing upward

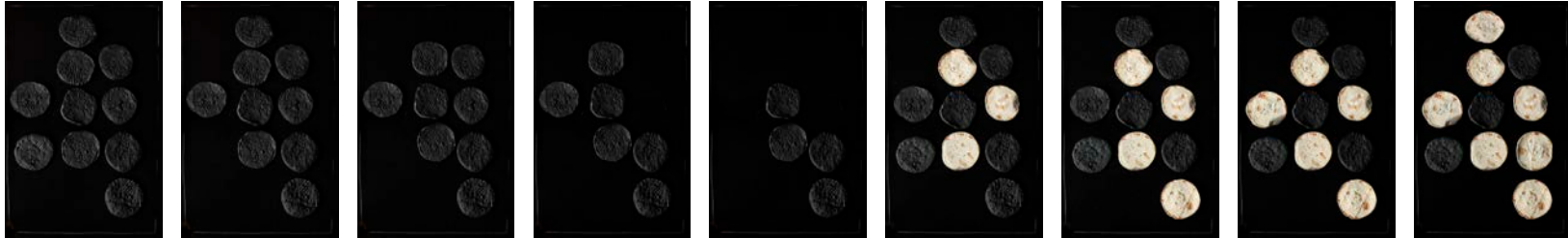
Picture. 11

9 pittas with their natural sides facing upward, compared with one pitta whose black side is facing upward

Picture. 12

10 pittas with their natural sides facing upward

Counting from 10 pittas with their black sides facing upward, and up to 10 pittas with their natural sides facing upward



Picture. 01  
10 pittas with their black sides facing upward

Picture. 02  
9 pittas with their black sides facing upward

Picture. 03  
8 pittas with their black sides facing upward

Picture. 04  
6 pittas with their black sides facing upward

Picture. 05  
4 pittas with their black sides facing upward

Picture. 06  
3 pittas with their natural sides facing upward, compared with 7 pittas with their black sides facing upward

Picture. 07  
4 pittas with their natural sides facing upward, compared with 6 pittas with their black sides facing upward

Picture. 08  
5 pittas with their natural sides facing upward, compared with 5 pittas with their black sides facing upward

Picture. 09  
7 pittas with their natural sides facing upward, compared with 3 pittas with their black sides facing upward

Picture. 10  
8 pittas with their natural sides facing upward, compared with 2 pittas with their black sides facing upward

Picture. 11  
9 pittas with their natural sides facing upward, compared with one pitta with its black side facing upward

Picture. 12  
10 pittas with their natural sides facing upward

Counting from 10 pittas with their natural sides facing upward, and up to 10 pittas with their black sides facing upward



Picture. 01

10 pittas with their natural sides facing upward

Picture. 02

9 pittas with their natural sides facing upward, compared with one pitta with its black side facing up

Picture. 03

8 pittas with their natural sides facing upward, compared with 2 pittas with their black sides facing upward

Picture. 04

7 pittas with their natural sides facing upward, compared with 3 pittas with their black sides facing upward

Picture. 05

5 pittas with their natural sides facing upward, compared with 5 pittas with their black sides facing upward

Picture. 06

4 pittas with their natural sides facing upward, compared with 6 pittas with their black sides facing upward

Picture. 07

3 with their natural sides facing upward, compared with 7 pittas with their black sides facing upward

Picture. 08

4 pittas with their black sides facing upward

Picture. 09

6 pittas with their black sides facing upward

Picture. 10

8 pittas with their black sides facing upward

Picture. 11

9 pittas with their black sides facing upward

Picture. 12

10 pittas with their black sides facing upward

# THE CARDS

DISPLAY COMBINATIONS OBTAINED BY  
RANDOMLY SCATTERING THE CARDS.

**AN ARAB SPRING, 1975**  
10 CARDS

**FAISAL, KING OF  
SAUDI ARABIA, 1975**  
8 CARDS

**FAISAL-MOSHE 1975-1981**  
9 CARDS

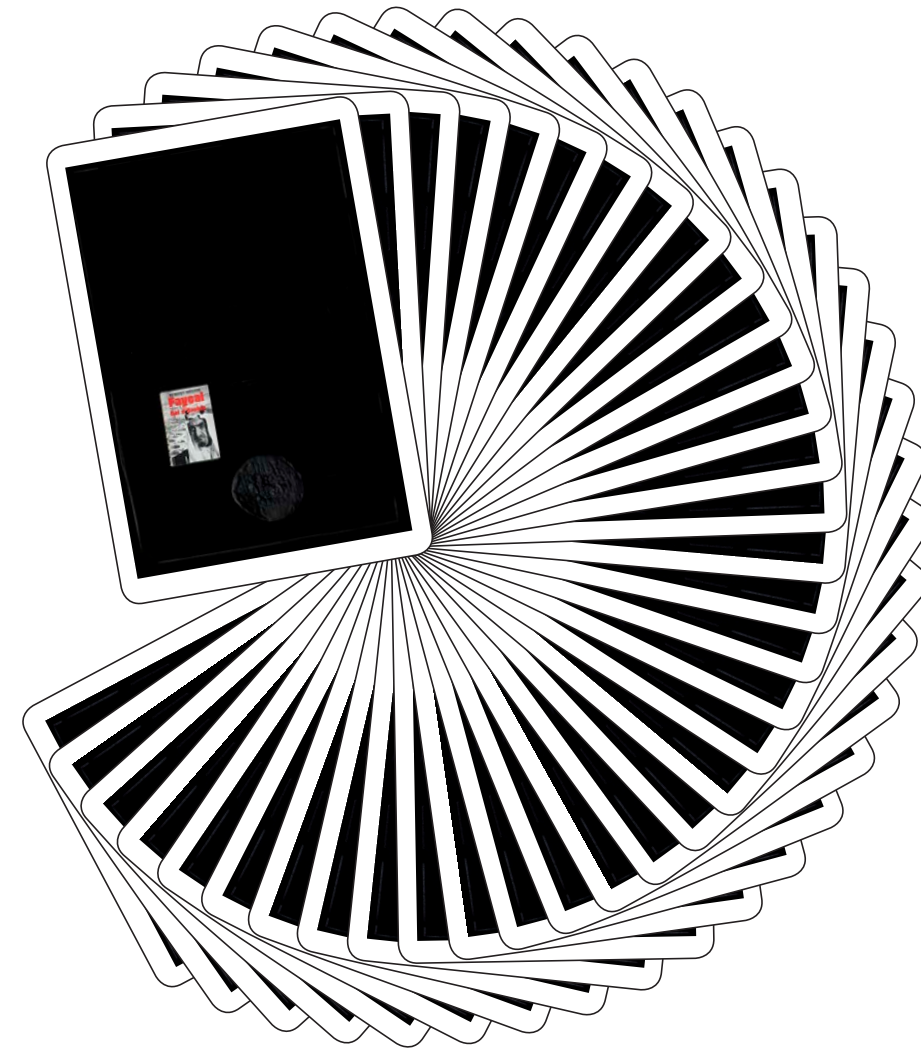
**PITTAS**  
12 CARDS

SET OF 39 PICTURES  
IDENTICAL WITH THE 39 CARDS



DISPLAY COMBINATIONS  
OBTAINED BY SHUFFLING THE SET  
OF CARDS AND SCATTERING THEM  
RANDOMLY ON A SURFACE, THEN  
PROJECTING THEM ON A WALL AT  
THE EXHIBITION / HOME.

46



47



**17 ANIMATIONS PROJECTED  
ON A PLASMA SCREEN OR  
ON THE WALL OF THE HOUSE  
/ EXHIBITION, AS FOLLOWS:**

**—**  **ANIMATIONS**



Counting from one pitta whose black side is facing upward only; the book 'An Arab Spring' and one pitta whose black side is facing upward; up to 14 pittas whose black sides are facing upward:



**Frame. 01**

One pitta whose black side is facing upward

**Frame. 02**

The book 'An Arab Spring' and one pitta whose black side is facing upward

**Frame. 03**

The book 'An Arab Spring' and 3 pittas with their black sides facing upward

**Frame. 04**

The book 'An Arab Spring' and 4 pittas with their black sides facing upward

**Frame. 05**

The book 'An Arab Spring' and 6 pittas with their black sides facing upward

**Frame. 06**

The book 'An Arab Spring' and 7 pittas with their black sides facing upward

**Frame. 07**

The book 'An Arab Spring' and 9 pittas with their black sides facing upward

**Frame. 08**

The book 'An Arab Spring' and 11 pittas with their black sides facing upward

**Frame. 09**

The book 'An Arab Spring' and 13 pittas with their black sides facing upward

**Frame. 10**

The book 'An Arab Spring' and 14 pittas with their black sides facing upward



Counting from the book 'An Arab Spring' and 14 pittas with their black sides facing upward - and up to one pitta with its black side facing upward:



**Frame. 01**

The book 'An Arab Spring' and 14 pittas with their black sides facing upward

**Frame. 02**

The book 'An Arab Spring' and 13 pittas with their black sides facing upward

**Frame. 03**

The book 'An Arab Spring' and 11 pittas with their black sides facing upward

**Frame. 04**

The book 'An Arab Spring' and 9 pittas with their black sides facing upward

**Frame. 05**

The book 'An Arab Spring' and 7 pittas with their black sides facing upward

**Frame. 06**

The book 'An Arab Spring' and 6 pittas with their black sides facing upward

**Frame. 07**

The book 'An Arab Spring' and 4 pittas with their black sides facing upward

**Frame. 08**

The book 'An Arab Spring' and 3 pittas with their black sides facing upward

**Frame. 09**

The book 'An Arab Spring' and one pitta whose black side is facing upward

**Frame. 10**

One pitta whose black side is facing upward

FAISAL, KING OF ARABIA 1975



COMBINATION 01/02

Counting from the book 'Faisal Bin Abdulaziz Alrahman King of Saudi Arabia', only; the book, with 2 pittas whose black sides are facing upward, and up to the book with 13 pittas with their black sides facing upward.



Frame. 01

The book 'Faisal Bin Abdulaziz Alrahman King of Saudi Arabia'

Frame. 02

The book 'Faisal Bin Abdulaziz Alrahman King of Saudi Arabia' and 2 pittas with their black sides facing upward

Frame. 03

The book 'Faisal Bin Abdulaziz Alrahman King of Saudi Arabia' and 3 pittas with their black sides facing upward

Frame. 04

The book 'Faisal Bin Abdulaziz Alrahman King of Saudi Arabia' and 5 pittas with their black sides facing upward

Frame. 05

The book 'Faisal Bin Abdulaziz Alrahman King of Saudi Arabia' and 7 pittas with their black sides facing upward

Frame. 06

The book 'Faisal Bin Abdulaziz Alrahman King of Saudi Arabia', and 9 pittas with their black sides facing upward

Frame. 07

The book 'Faisal Bin Abdulaziz Alrahman King of Saudi Arabia', and 11 pittas with their black sides facing upward

Frame. 08

The book 'Faisal Bin Abdulaziz Alrahman King of Saudi Arabia' and 13 pittas with their black sides facing upward

Counting from the book 'Faisal Bin Abdulaziz Alrahman King of Saudi Arabia' and 13 pittas with their black sides facing upward - up to the book 'Faisal Bin Abdulaziz Alrahman King of Saudi Arabia', only.

56



Frame. 01

The book 'Faisal Bin Abdulaziz Alrahman King of Saudi Arabia' and 13 pittas with their black sides facing upward

Frame. 02

The book 'Faisal Bin Abdulaziz Alrahman King of Saudi Arabia', and 11 pittas with their black sides facing upward

Frame. 03

The book 'Faisal Bin Abdulaziz Alrahman King of Saudi Arabia', and 9 pittas with their black sides facing upward

Frame. 04

The book 'Faisal Bin Abdulaziz Alrahman King of Saudi Arabia', and 7 pittas with their black sides facing upward

Frame. 05

The book 'Faisal Bin Abdulaziz Alrahman King of Saudi Arabia' and 5 pittas with their black sides facing upward

Frame. 06

The book 'Faisal Bin Abdulaziz Alrahman King of Saudi Arabia' and 3 pittas with their black sides facing upward

Frame. 07

The book 'Faisal Bin Abdulaziz Alrahman King of Saudi Arabia' and 2 pittas with their black sides facing upward

Frame. 08

The book 'Faisal Bin Abdulaziz Alrahman King of Saudi Arabia' - only

FAISAL-MOSHE  
1975-1981



COMBINATION 01/02

Counting from a picture of 'Faisal-Moshe' only, and 'Faisal-Moshe' with one pitta whose black side is facing upward - and up to 13 pittas with their black sides facing upward



|                  |   |  |  |  |  |  |   |   |
|------------------|---|--|--|--|--|--|---|---|
| <u>Frame. 01</u> | <u>Frame. 02</u>  | <u>Frame. 03</u>   | <u>Frame. 04</u>   | <u>Frame. 05</u>   | <u>Frame. 06</u>   | <u>Frame. 07</u>   | <u>Frame. 08</u>  | <u>Frame. 09</u>  |
| 'Faisal-Moshe'   | 'Faisal-Moshe' and one pitta whose black side is facing upward. | 'Faisal-Moshe' and 2 pittas with their black sides facing upward | 'Faisal-Moshe' and 3 pittas with their black sides facing upward | 'Faisal-Moshe' and 5 pittas with their black sides facing upward | 'Faisal-Moshe' and 7 pittas with their black sides facing upward | 'Faisal-Moshe' and 9 pittas with their black sides facing upward | 'Faisal-Moshe' and 11 pittas with their black sides facing upward | 'Faisal-Moshe' and 13 pittas with their black sides facing upward |

FAISAL-MOSHE  
1975-1981



COMBINATION 02/02

Counting from 'Faisal-Moshe' and  
13 to 1 pittas with their black sides  
facing upward, and up to a picture of  
'Faisal-Moshe', only



|   |   |  |  |  |   |  |  |                  |
|---|---|--|--|--|---|--|--|------------------|
| <u>Frame. 01</u>  | <u>Frame. 02</u>  | <u>Frame. 03</u>   | <u>Frame. 04</u>   | <u>Frame. 05</u>   | <u>Frame. 06</u>  | <u>Frame. 07</u>   | <u>Frame. 08</u>   | <u>Frame. 09</u> |
| 'Faisal-Moshe' and 13<br>pittas with their black<br>sides facing upward | 'Faisal-Moshe' and 11<br>pittas with their black<br>sides facing upward | 'Faisal-Moshe' and 9<br>pittas with their black<br>sides facing upward | 'Faisal-Moshe' and 7<br>pittas with their black<br>sides facing upward | 'Faisal-Moshe' and 5<br>pittas with their black<br>sides facing upward | Faisal-Moshe' and 3<br>pittas with their black<br>sides facing upward | 'Faisal-Moshe' and 2<br>pittas with their black<br>sides facing upward | 'Faisal-Moshe' and<br>one pitta whose black<br>side is facing upward | 'Faisal-Moshe'   |

FAISAL-MOSHE  
1975-1981

FAISAL, KING OF  
ARABIA 1975



INTEGRATED  
COMBINATION 01/04

Counting from 'Faisal-Moshe' only, and 'Faisal-Moshe' with one pitta whose black side is facing upward, and up to 13 pittas with their black sides facing upward. Then the book 'Faisal Bin Abdulaziz Alrahman King of Saudi Arabia', only.



**Frame. 01**  
'Faisal-Moshe'

**Frame. 02**  
'Faisal-Moshe' and one pitta whose black side is facing upward.

**Frame. 03**  
'Faisal-Moshe' and 2 pittas with their black sides facing upward

**Frame. 04**  
'Faisal-Moshe' and 3 pittas with their black sides facing upward

**Frame. 05**  
'Faisal-Moshe' and 5 pittas with their black sides facing upward

**Frame. 06**  
'Faisal-Moshe' and 7 pittas with their black sides facing upward

**Frame. 07**  
'Faisal-Moshe' and 9 pittas with their black sides facing upward

**Frame. 08**  
'Faisal-Moshe' and 11 pittas with their black sides facing upward

**Frame. 09**  
'Faisal-Moshe' and 13 pittas with their black sides facing upward



**Frame. 10**  
The book 'Faisal Bin Abdulaziz Alrahman King of Saudi Arabia', and 13 pittas with their black sides facing upward

**Frame. 11**  
The book 'Faisal Bin Abdulaziz Alrahman King of Saudi Arabia', and 11 pittas with their black sides facing upward

**Frame. 12**  
The book 'Faisal Bin Abdulaziz Alrahman King of Saudi Arabia', and 9 pittas with their black sides facing upward

**Frame. 13**  
The book 'Faisal Bin Abdulaziz Alrahman King of Saudi Arabia', and 7 pittas with their black sides facing upward

**Frame. 14**  
The book 'Faisal Bin Abdulaziz Alrahman King of Saudi Arabia', and 5 pittas with their black sides facing upward

**Frame. 15**  
The book 'Faisal Bin Abdulaziz Alrahman King of Saudi Arabia', and 3 pittas with their black sides facing upward

**Frame. 16**  
The book 'Faisal Bin Abdulaziz Alrahman King of Saudi Arabia', and 2 pittas with their black sides facing upward

**Frame. 17**  
The book 'Faisal Bin Abdulaziz Alrahman King of Saudi Arabia'





FAISAL, KING OF ARABIA 1975

FAISAL-MOSHE 1975-1981



INTEGRATED COMBINATION 03/04

Counting from the book 'Faisal Bin Abdulaziz Alrahman King of Saudi Arabia' only, and the book 'Faisal Bin Abdulaziz Alrahman King of Saudi Arabia' with from 2 to 13 pittas with their black sides facing upward;

then from 'Faisal-Moshe' and from 13 pittas with their black sides facing upward, and up to one pitta with its black side facing upward, to 'Faisal-Moshe' only.



**Frame. 01**  
The book 'Faisal Bin Abdulaziz Alrahman King of Saudi Arabia'

**Frame. 02**  
The book 'Faisal Bin Abdulaziz Alrahman King of Saudi Arabia' and 2 pittas with their black sides facing upward

**Frame. 03**  
The book 'Faisal Bin Abdulaziz Alrahman King of Saudi Arabia' and 3 pittas with their black sides facing upward

**Frame. 04**  
The book 'Faisal Bin Abdulaziz Alrahman King of Saudi Arabia' and 5 pittas with their black sides facing upward

**Frame. 05**  
The book 'Faisal Bin Abdulaziz Alrahman King of Saudi Arabia' and 7 pittas with their black sides facing upward

**Frame. 06**  
The book 'Faisal Bin Abdulaziz Alrahman King of Saudi Arabia' and 9 pittas with their black sides facing upward

**Frame. 07**  
The book 'Faisal Bin Abdulaziz Alrahman King of Saudi Arabia' and 11 pittas with their black sides facing upward

**Frame. 08**  
The book 'Faisal Bin Abdulaziz Alrahman King of Saudi Arabia' and 13 pittas with their black sides facing upward

**Frame. 09**  
'Faisal-Moshe' and 13 pittas with their black sides facing upward



**Frame. 10**  
'Faisal-Moshe' and 11 pittas with their black sides facing upward

**Frame. 11**  
'Faisal-Moshe' and 9 pittas with their black sides facing upward

**Frame. 12**  
'Faisal-Moshe' and 7 pittas with their black sides facing upward

**Frame. 13**  
'Faisal-Moshe' and 5 pittas with their black sides facing upward

**Frame. 14**  
Faisal-Moshe' and 3 pittas with their black sides facing upward

**Frame. 15**  
'Faisal-Moshe' and 2 pittas with their black sides facing upward

**Frame. 16**  
'Faisal-Moshe' and one pitta whose black side is facing upward

**Frame. 17**  
'Faisal-Moshe'

FAISAL, KING OF  
ARABIA 1975

FAISAL-MOSHE  
1975-1981



INTEGRATED  
COMBINATION 04/04

Counting from the book 'Faisal Bin Abdulaziz Alrahman King of Saudi Arabia', and from 13 to 2 pittas with their black sides facing upward, to the book 'Faisal Bin Abdulaziz Alrahman King of Saudi Arabia' only,

followed by 'Faisal-Moshe' only, and then from 1 to 13 pittas with their black sides facing upward.



**Frame. 01**  
The book 'Faisal Bin Abdulaziz Alrahman King of Saudi Arabia' and 13 pittas with their black sides facing upward

**Frame. 02**  
The book 'Faisal Bin Abdulaziz Alrahman King of Saudi Arabia', and 11 pittas with their black sides facing upward

**Frame. 03**  
The book 'Faisal Bin Abdulaziz Alrahman King of Saudi Arabia', and 9 pittas with their black sides facing upward

**Frame. 04**  
The book 'Faisal Bin Abdulaziz Alrahman King of Saudi Arabia' and 7 pittas with their black sides facing upward

**Frame. 05**  
The book 'Faisal Bin Abdulaziz Alrahman King of Saudi Arabia' and 5 pittas with their black sides facing upward

**Frame. 06**  
The book 'Faisal Bin Abdulaziz Alrahman King of Saudi Arabia' and 3 pittas with their black sides facing upward

**Frame. 07**  
The book 'Faisal Bin Abdulaziz Alrahman King of Saudi Arabia' and 2 pittas with their black sides facing upward

**Frame. 08**  
The book 'Faisal Bin Abdulaziz Alrahman King of Saudi Arabia'

**Frame. 09**  
'Faisal-Moshe'



**Frame. 10**  
'Faisal-Moshe' and one pitta whose black side is facing upward.

**Frame. 11**  
'Faisal-Moshe' and 2 pittas with their black sides facing upward

**Frame. 12**  
'Faisal-Moshe' and 3 pittas with their black sides facing upward

**Frame. 13**  
'Faisal-Moshe' and 5 pittas with their black sides facing upward

**Frame. 14**  
'Faisal-Moshe' and 7 pittas with their black sides facing upward

**Frame. 15**  
'Faisal-Moshe' and 9 pittas with their black sides facing upward

**Frame. 16**  
'Faisal-Moshe' and 11 pittas with their black sides facing upward

**Frame. 17**  
'Faisal-Moshe' and 13 pittas with their black sides facing upward

Counting from I to IO, according to pittas whose black sides are facing upward.



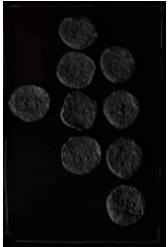
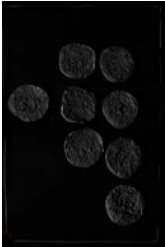
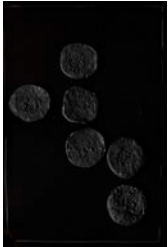
|  |  |  |  |   |  |  |   |  |  |   |   |
|--|--|--|--|---|--|--|---|--|--|---|---|
| <p><u>Frame. 01</u></p> <p>A pitta whose black side is facing upward, compared with 9 pittas whose natural sides are facing upward</p> | <p><u>Frame. 02</u></p> <p>2 pittas with their black sides facing upward, compared with 8 pittas whose natural sides are facing upward</p> | <p><u>Frame. 03</u></p> <p>3 pittas with their black sides facing upward, compared with 7 pittas whose natural sides are facing upward</p> | <p><u>Frame. 04</u></p> <p>4 pittas with their black sides facing upward</p> | <p><u>Frame. 05</u></p> <p>5 pittas with their black sides facing upward, compared with 5 pittas with their natural sides facing upward</p> | <p><u>Frame. 06</u></p> <p>6 pittas with their black sides facing upward</p> | <p><u>Frame. 07</u></p> <p>6 pittas with their black sides facing upward, compared with 4 pittas whose natural sides are facing upward</p> | <p><u>Frame. 08</u></p> <p>7 pittas with their black sides facing upward, compared with 3 pittas with their natural sides facing upward</p> | <p><u>Frame. 09</u></p> <p>8 pittas with their black sides facing upward</p> | <p><u>Frame. 10</u></p> <p>9 pittas with their black sides facing upward</p> | <p><u>Frame. 11</u></p> <p>10 pittas with their black sides facing upward</p> | <p><u>Frame. 12</u></p> <p>10 pittas with their natural sides facing upward</p> |
|--|--|--|--|---|--|--|---|--|--|---|---|

Counting from 3 to 10, according to pittas whose natural sides are facing upward.



|  |  |  |  |  |  |  |  |   |  |   |   |
|--|--|--|--|--|--|--|--|---|--|---|---|
| <p><u>Frame. 01</u></p> <p>3 pittas with their natural sides facing upward, compared with 7 pittas whose black sides are facing upward</p> | <p><u>Frame. 02</u></p> <p>4 pittas with their natural sides facing upward, compared with 6 pittas whose black sides are facing upward</p> | <p><u>Frame. 03</u></p> <p>4 pittas with their black sides facing upward</p> | <p><u>Frame. 04</u></p> <p>5 pittas with their natural sides facing upward, compared with 5 pittas whose black sides are facing upward</p> | <p><u>Frame. 05</u></p> <p>6 pittas with their black sides facing upward</p> | <p><u>Frame. 06</u></p> <p>7 pittas with their natural sides facing upward, compared with 3 pittas whose black sides are facing upward</p> | <p><u>Frame. 07</u></p> <p>8 pittas with their natural sides facing upward, compared with 2 pittas whose black sides are facing upward</p> | <p><u>Frame. 08</u></p> <p>8 pittas with their black sides facing upward</p> | <p><u>Frame. 09</u></p> <p>9 pittas with their natural sides facing upward, compared with one pitta with its black side facing upward</p> | <p><u>Frame. 10</u></p> <p>9 pittas with their black sides facing upward</p> | <p><u>Frame. 11</u></p> <p>10 pittas with their natural sides facing upward</p> | <p><u>Frame. 12</u></p> <p>10 pittas with their black sides facing upward</p> |
|--|--|--|--|--|--|--|--|---|--|---|---|

Counting from 4 up to 10 pittas,  
whose black sides are facing upward  
only; and from 10 to 3 pittas whose  
natural sides are facing upward



Frame. 01

4 pittas with their  
black sides facing  
upward

Frame. 02

6 pittas with their  
black sides facing  
upward

Frame. 03

8 pittas with their  
black sides facing  
upward

Frame. 04

9 pittas with their  
black sides facing  
upward

Frame. 05

10 pittas with their  
black sides facing  
upward

Frame. 06

10 pittas with their  
natural sides facing  
upward

Frame. 07

9 pittas with their  
natural sides facing  
upward, compared  
with one pitta  
whose black side  
is facing upward

Frame. 08

8 pittas with their  
natural sides facing  
upward, compared  
with 2 pittas whose  
black sides are  
facing upward

Frame. 09

7 pittas with their  
natural sides facing  
upward, compared  
with 3 pittas whose  
black sides are  
facing upward

Frame. 10

5 pittas with their  
natural sides facing  
upward, compared  
with 5 pittas whose  
black sides are facing  
upward

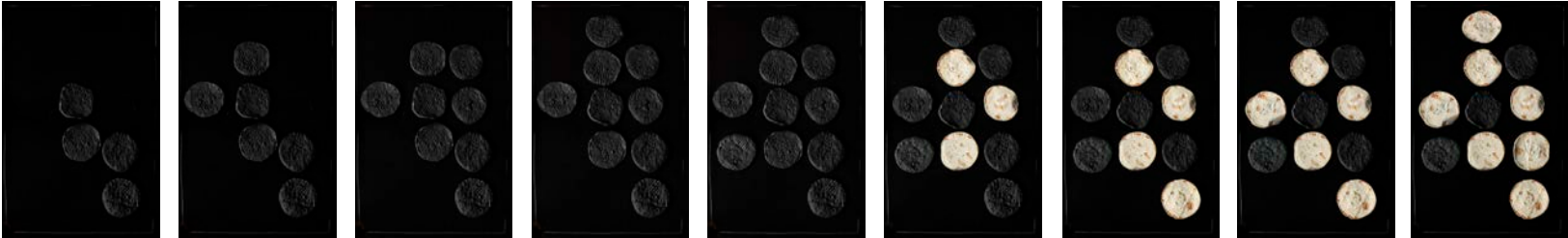
Frame. 11

4 pittas with their  
natural sides facing  
upward, compared  
with 6 pittas whose  
black sides are facing  
upward

Frame. 12

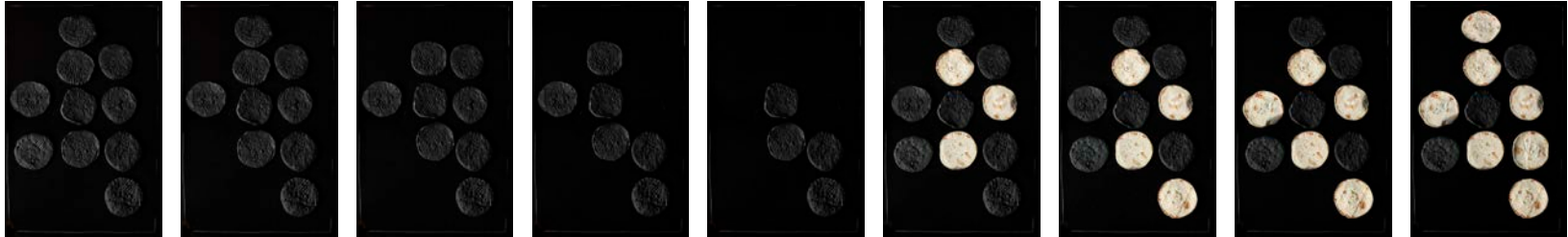
3 pittas with their  
natural sides facing  
upward, compared  
with 7 pittas whose  
black sides are facing  
upward

Counting from 4 to 10 pittas with their black sides facing upward only; and from 3 to 10 pittas whose natural sides are facing upward and with pittas whose black sides are facing upward:



|  |  |  |  |   |   |   |   |   |   |   |   |
|--|--|--|--|---|---|---|---|---|---|---|---|
| <p><u>Frame. 01</u></p> <p>4 pittas with their black sides facing upward</p> | <p><u>Frame. 02</u></p> <p>6 pittas with their black sides facing upward</p> | <p><u>Frame. 03</u></p> <p>8 pittas with their black sides facing upward</p> | <p><u>Frame. 04</u></p> <p>9 pittas with their black sides facing upward</p> | <p><u>Frame. 05</u></p> <p>10 pittas with their black sides facing upward</p> | <p><u>Frame. 06</u></p> <p>3 pittas with their natural sides facing upward, compared with 7 pittas with their black sides facing upward</p> | <p><u>Frame. 07</u></p> <p>4 pittas with their natural sides facing upward, compared with 6 pittas with their black sides facing upward</p> | <p><u>Frame. 08</u></p> <p>5 pittas with their natural sides facing upward, compared with 5 pittas with their black sides facing upward</p> | <p><u>Frame. 09</u></p> <p>7 pittas with their natural sides facing upward, compared with 3 pittas with their black sides facing upward</p> | <p><u>Frame. 10</u></p> <p>8 pittas with their natural sides facing upward, compared with 2 pittas with their black sides facing upward</p> | <p><u>Frame. 11</u></p> <p>9 pittas with their natural sides facing upward, compared with one pitta whose black side is facing upward</p> | <p><u>Frame. 12</u></p> <p>10 pittas with their natural sides facing upward</p> |
|--|--|--|--|---|---|---|---|---|---|---|---|

Counting from 10 pittas with their black sides facing upward, and up to 10 pittas with their natural sides facing upward



Frame. 01

10 pittas with their black sides facing upward

Frame. 02

9 pittas with their black sides facing upward

Frame. 03

8 pittas with their black sides facing upward

Frame. 04

6 pittas with their black sides facing upward

Frame. 05

4 pittas with their black sides facing upward

Frame. 06

3 pittas with their natural sides facing upward, compared with 7 pittas with their black sides facing upward

Frame. 07

4 pittas with their natural sides facing upward, compared with 6 pittas with their black sides facing upward

Frame. 08

5 pittas with their natural sides facing upward, compared with 5 pittas with their black sides facing upward

Frame. 09

7 pittas with their natural sides facing upward, compared with 3 pittas with their black sides facing upward

Frame. 10

8 pittas with their natural sides facing upward, compared with 2 pittas with their black sides facing upward

Frame. 11

9 pittas with their natural sides facing upward, compared with one pitta with its black side facing upward

Frame. 12

10 pittas with their natural sides facing upward



Counting from 10 pittas with their natural sides facing upward, and up to 10 pittas with their black sides facing upward



Frame. 01

10 pittas with their natural sides facing upward

Frame. 02

9 pittas with their natural sides facing upward, compared with one pitta with its black side facing up

Frame. 03

8 pittas with their natural sides facing upward, compared with 2 pittas with their black sides facing upward

Frame. 04

7 pittas with their natural sides facing upward, compared with 3 pittas with their black sides facing upward

Frame. 05

5 pittas with their natural sides facing upward, compared with 5 pittas with their black sides facing upward

Frame. 06

4 pittas with their natural sides facing upward, compared with 6 pittas with their black sides facing upward

Frame. 07

3 with their natural sides facing upward, compared with 7 pittas with their black sides facing upward

Frame. 08

4 pittas with their black sides facing upward

Frame. 09

6 pittas with their black sides facing upward

Frame. 10

8 pittas with their black sides facing upward

Frame. 11

9 pittas with their black sides facing upward

Frame. 12

10 pittas with their black sides facing upward

# THE CARDS

DISPLAY COMBINATIONS OBTAINED BY  
RANDOMLY SCATTERING THE CARDS.

**AN ARAB SPRING, 1975**  
10 CARDS

**FAISAL, KING OF  
SAUDI ARABIA, 1975**  
8 CARDS

**FAISAL-MOSHE 1975-1981**  
9 CARDS

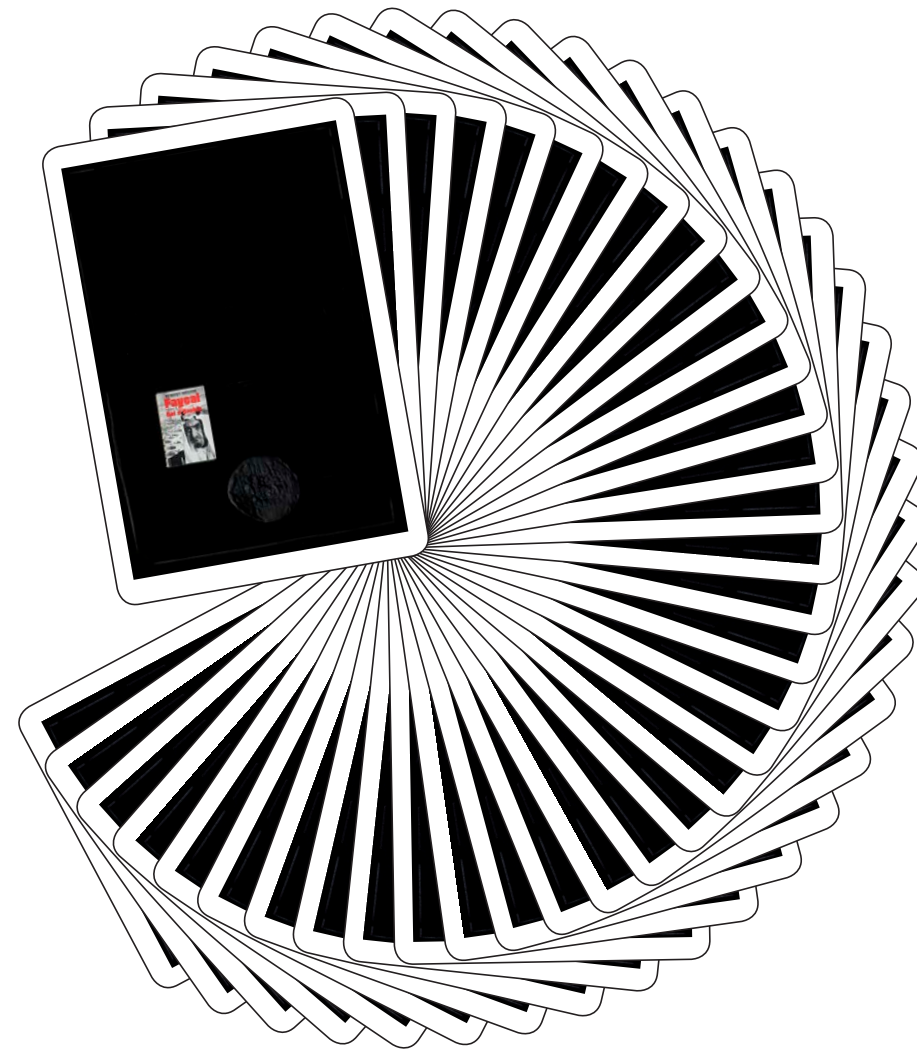
**PITTAS**  
12 CARDS

SET OF 39 CARDS.  
A COMBINATION THAT ACCORDS  
WITH THE ORDER DETERMINED  
BY THE RANDOM SCATTERING  
OF THE CARDS



17 animations, including 16  
animations of the above  
combinations, and one animation  
of another combination that was  
determined by the randomly  
scattered cards.

82



83

## EDITION I

FIVE COPIES AND TWO MASTER-COPIES

AN ARAB SPRING, 1975  
20 PICTURES

FAISAL, KING OF  
SAUDI ARABIA, 1975  
48 PICTURES

FAISAL-MOSHE 1975-1981  
54 PICTURES

PITTAS  
72 PICTURES

39 PICTURES IDENTICAL TO THE CARDS,  
AS FOLLOWS. A TOTAL OF 233 PICTURES.



A SET OF 39 CARDS.

AN ARAB SPRING, 1975  
10 CARDS

FAISAL, KING OF  
SAUDI ARABIA, 1975  
8 CARDS

FAISAL-MOSHE 1975-1981  
9 CARDS

PITTAS  
12 CARDS

AN EDITION OF 10 COPIES AND 2  
MASTER-COPIES



17 ANIMATION SCREENS OF THE  
COMBINATIONS SPECIFIED ABOVE.

## EDITION II

FIVE COPIES AND TWO MASTER-COPIES

AN ARAB SPRING, 1975  
10 PICTURES

FAISAL, KING OF  
SAUDI ARABIA, 1975  
8 PICTURES

FAISAL-MOSHE 1975-1981  
9 PICTURES

PITTAS  
12 PICTURES

A TOTAL OF 39 PICTURES.



A SET OF 39 CARDS.

AN ARAB SPRING, 1975  
10 CARDS

FAISAL, KING OF  
SAUDI ARABIA, 1975  
8 CARDS

FAISAL-MOSHE 1975-1981  
9 CARDS

PITTAS  
12 CARDS

AN EDITION OF 10 COPIES AND 2  
MASTER-COPIES



17 ANIMATION SCREENS OF THE  
COMBINATIONS SPECIFIED ABOVE.

## EDITION III

A SPECIAL EDITION OF ONE COPY,  
FOR DISTRIBUTION, OF EACH PICTURE  
OR ANY SEPARATE ANIMATION AND 2  
MASTER-COPIES

AN ARAB SPRING, 1975  
10 PICTURES

FAISAL, KING OF  
SAUDI ARABIA, 1975  
8 PICTURES

FAISAL-MOSHE 1975-1981  
9 PICTURES

PITTAS  
12 PICTURES

A TOTAL OF 39 PICTURES AND  
17 ANIMATIONS.