



EARTHCHECK

# EMS PERFORMANCE REPORT

## PERISHER RANGE LODGES SUMMARY 2015/16



REPORT DATE: 2 November 2016

Reporting Period: 1 March 2015 – 29 February 2016

Report Compiled by EarthCheck on behalf of the NSW National Parks and Wildlife Service –  
Office of Environment and Heritage

*The planet deserves more than half measures*

---

## CONTENTS

INTRODUCTION	3
SUMMARY OF RESULTS	4
PRREMS OBJECTIVES, PERFORMANCE INDICATORS AND TARGETS	6
ENVIRONMENTAL PERFORMANCE	
Flora and Fauna	8
Soil and Water	15
Air Quality	25
Waste and Recycling	30
Energy	33
Water	39
Cultural Heritage and Amenity	45
Sustainable Tourism	48
ADDITIONAL INFORMATION	52
CONCLUSION	60
PERFORMANCE TREND AND RECOMMENDATIONS	61
APPENDIX 1	
How the energy calculator and CO <sub>2</sub> emissions are calculated	63

---

## INTRODUCTION

The Perisher Range Resorts Environmental Management System (PRREMS) was developed using the international standard for environmental management ISO 14001 focusing on targeted, continuous improvement in environmental management. The PRREMS applies to all parties that operate in the Perisher Range Resorts and its goal is to ensure that all activities and developments are carried out in a controlled and sustainable manner. It establishes a system for coordination and cooperation among the stakeholders to:

- Collectively reduce impacts on the environment
- Identify and manage environmental risks
- Achieve and maintain compliance with legislation and other regulatory requirements
- Set environmental objectives and targets and
- Plan, document, measure and evaluate environmental performance.

This report, compiled by EarthCheck for the NSW National Parks and Wildlife Service (NPWS), Office of Environment and Heritage (OEH) combines all the information submitted by the lodges in Perisher Valley, Smiggin Holes and Guthega between 1 March 2015 – 29 February 2016. It uses the responses to the Earthcheck questions to evaluate the environmental performance of the lodges against the nine objectives and 29 PRREMS targets and wherever possible compares the results with historical data. A summary of the results can be found in table one.

117 lodges out of a possible 120 submitted their information using the EarthCheck on-line reporting system for this period (2015 – 16)

The layout of the report relates to the six core value areas and the respective objectives and targets: 1) Flora & Fauna 2) Soil & Water 3) Air Quality 4) Natural Resources 5) Cultural heritage & Amenity and 6) Sustainable Tourism. The 9 objectives and 29 targets along with the key performance indicators are listed in Table two.

The collated data that relates to targets has been graphed along with the lodge average for each target. It has also been evaluated and given a performance rating as represented by one of the following symbols:

- ✘ - indicating performance is below/does not meet the EMS target
- ✓ - indicating performance is at/meets the EMS target
- ★ - indicating performance is above/exceeds the EMS target

Some of the qualitative data that relates to achieving the objectives has also been graphed and given a performance rating. The remainder of the information has been summarized in tabulated formats so that it can be added to in subsequent years and reviewed over time.

The previous year's environmental performance may be different for some targets to what was reported in the previous report. This is due to the late submission of reports by lodges for that period. These individual reports have now been automatically included in the combined results for that year and may have altered the performance outcome.

Further information on the accommodation component of the PRREMS can be found in the *PRREMS Lodge Environment Manual* at <http://www.environment.nsw.gov.au/prrems>

For any questions regarding this report, please contact the NPWS Environmental Management Officer (EMS), email: [perisher.ems@environment.nsw.gov.au](mailto:perisher.ems@environment.nsw.gov.au) or on 6450 5612.

## SUMMARY OF RESULTS

Table 1: Summary of all PRR lodges performance against PRREMS Targets 2015 – 16

**Legend**

✘ below the EMS target | ✔ meets the EMS target | ★ exceeds the EMS target

☐ Not Applicable - This is either a new target or the threshold on the old target has been increased and the current year's figures cannot be compared.

✦ No quantitative data collected in lodge reports for this target. It is a whole of PRREMS target that will be measured against the waste totals recorded by NPWS for all operators in the PRR

PRREMS Target	Performance			
	12/13	13/14	14/15	15/16
1. Lodges only using local native plants for landscaping.	✘	✘	✘	✘
2. All lodges located in high priority areas on the Perisher Rehabilitation Plan to have rehab plans developed for their lease.	✘	✘	✘	✘
3. No lodges using baits, snares, traps or rat poison as pest control without NPWS approval.	✔	✘	✘	✘
4. 60% of lodges undertaking weed control	✘	✘	✘	✘
5. 100% hydrocarbon storage containers compliant and managed appropriately.	✘	✘	✘	✘
6. All redundant hydrocarbon fuel storage tanks decommissioned and sites validated.	✘	✘	✘	✘
7. Zero pollution incidents.	✘	✔	✘	✔
8. 100% of significant incidents reported to NPWS.	✔	✘	✘	✘
9. 100% incidents managed in a timely manner.	✔	✔	✔	✔
10. 100% of lodges who store chemicals/fuel to have well equipped spill kits.	✘	✘	✘	✘
11. 100% of lodges who store chemicals/fuel clearly displaying PRREMS Lodge Incident Procedure.	✘	✘	✘	✘
12. 100% of grease traps working effectively	✘	✘	✘	✘
13. To reduce amount of CO2 equivalent emitted per visitor night.	☐	✘	✘	✘
14. Less than 10% of lodges using open fireplaces as their primary source of heating.	✔	★	★	★
15. Less than 20% of lodges using ODS appliances.	★	★	★	★
16. To reduce amount of waste produced	✦	✦	✦	✦
17. 100% of lodges recycling.	✘	✘	✘	✘
18. To recycle more than 50% of total waste.	✦	✦	✦	✦

19. To reduce energy used per visitor night by 5% annually.	<input type="checkbox"/>	x	x	x
20. More than 5% of total energy used to come from renewable sources.	<input type="checkbox"/>	x	x	x
21. Less than 200L of water used per visitor night.	<input type="checkbox"/>	★	★	★
22. More than 90% of lodges implementing water saving measures.	x	x	x	x
23. 100% of lodges regularly inspecting their lease for erosion problems	x	x	x	x
24. 100% of lodges with erosion issues taking actions to prevent and manage the erosion.	x	x	x	x
25. 75% of lodges educating guests and staff about PRR cultural heritage values.	x	x	x	x
26. 100% lodges have lease areas free from excess building materials, equipment, garbage, weeds and other items that negatively affect scenic value.	x	✓	✓	x
27. 100% of staff EMS awareness trained.	x	x	x	x
<b>28. 100% of organisations with fully implemented EMS's for their operations within Perisher Range Resorts.</b>	✓	x	x	x
29. 100% of lodge committees annually review and discuss their environmental risks.	x	x	x	x

## PRREMS OBJECTIVES, PERFORMANCE INDICATORS AND TARGETS

Core Value	Objective	Key Performance Indicator	Target
<b>Flora &amp; Fauna</b>	<b>1</b> To Protect flora, fauna and ecological communities, prevent loss of biodiversity and restore native vegetation and ecosystem functions to previously disturbed areas.	Percentage of lodges who are only using native species for their landscaping	<b>1</b> To have lodges only using local native plants for landscaping.
		Percentage of lodges in the high conservation zones of the Perisher Rehabilitation Plan with a lease rehab plan	<b>2</b> All lodges located in the high priority areas of the Perisher Rehabilitation Plan to have a rehab plan for their lease.
		Number of lodges using illegal baits, snap traps or poisons as pest control	<b>3</b> No lodges using baits, snares, snap traps or rat poison as pest control without NPWS approval.
		Percentage of lodges undertaking weed control.	<b>4</b> To have more than 60% of lodges undertaking weed control.
<b>Soil &amp; Water</b>	<b>2</b> To prevent and manage leaks, spills and unlicensed discharges of potentially harmful substances to the environment.	Percentage of hydrocarbon storage containers appropriately constructed and managed.	<b>5</b> To have all hydrocarbon storage containers compliant and managed appropriately.
		Number of redundant fuel storage tanks that have not been decommissioned and sites validated.	<b>6</b> To have all redundant hydrocarbon fuel storage tanks decommissioned and sites validated.
		Number of pollution incidents.	<b>7</b> To have zero pollution incidents.
		Percentage of incidents reported to NPWS.	<b>8</b> To have all significant incidents reported to NPWS.
		Percentage of incidents that were managed in a timely manner.	<b>9</b> To have all incidents managed in a timely manner.
		Percentage of lodges who store chemicals or fuels that have a well-equipped spill kit.	<b>10</b> For all lodges who store chemicals or fuel to have a well-equipped spill kits.
		Percentage of lodges that store chemicals or fuel clearly displaying the PRREMS Lodge Incident procedure.	<b>11</b> To have all lodges that store chemicals or fuel clearly displaying the PRREMS lodge Incident procedure.
Percentage of grease traps working effectively.	<b>12</b> To have all grease traps working effectively.		
<b>Air Quality</b>	<b>3</b> To improve local air quality and reduce or offset carbon dioxide (CO <sub>2</sub> ) emissions.	Amount of CO <sub>2</sub> emissions (kg)	<b>13</b> To reduce the amount of CO <sub>2</sub> equivalent emitted per visitor night.
		Percentage of lodges using an open fireplace as their primary source of heating	<b>14</b> To have less than 10% of lodges using open fireplaces as their primary source of heating.
		Percentage of lodges using ODS appliances	<b>15</b> To have less than 20% of lodges using ODS appliances.
<b>Natural Resources</b>	<b>4</b> To minimise waste, maximise resource recovery and prevent environmental harm from waste disposal.	Amount of waste produced	<b>16</b> To reduce the amount of waste produced.
		Percentage of lodges recycling	<b>17</b> To have all lodges recycling.
		Percentage of total waste recycled	<b>18</b> To recycle more than 50% of total waste.
<b>5</b>	To improve the efficiency of energy consumption and increase the use	Amount of energy used (joules) per visitor night	<b>19</b> To reduce energy used/ per visitor Night by 5% annually.

		of renewable energy.	Percentage of renewable energy used and/or 'Green power' purchased.	<b>20</b>	To have more than 5% of the total energy used to come from renewable sources.
	<b>6</b>	To protect the environmental health and aquatic ecosystems of alpine streams from resort activities.	Amount of water used (L) per visitor night	<b>21</b>	To have less than 200L of water used per visitor night.
			Percentage of lodges implementing water saving measures	<b>22</b>	To have more than 90% of lodges implementing water saving measures.
			Percentage of lodges undertaking an annual lease inspection for erosion problems	<b>23</b>	To have all lodges regularly inspecting their lease for erosion problems
			Percentage of lodges with an erosion problem who are undertaking works planning to rectify the problem	<b>24</b>	To have those lodges with erosion issues taking actions to prevent and manage the erosion.
<b>Heritage &amp; Amenity</b>	<b>7</b>	To conserve and promote the cultural heritage values of the alpine resort areas.	Percentage of lodges educating guests and staff about Perisher Range Resorts cultural heritage values	<b>25</b>	To have 75% of lodges educating guests and staff about Perisher Range Resorts cultural heritage values.
	<b>8</b>	To conserve and enhance the existing amenity of the alpine resorts.	Percentage of lodge leases not free of excess materials, equipment etc.	<b>26</b>	All lodge lease areas to be free of excess building material, equipment, garbage, weeds and other items that negatively affect scenic values.
<b>Sustainable Tourism</b>	<b>9</b>	To ensure that the recreational opportunities and facilities of the alpine resorts are provided and managed sustainably.	Percentage of staff EMS awareness trained	<b>27</b>	To have all staff EMS awareness trained.
			Percentage of lodges reporting against the PRREMS	<b>28</b>	To have all organisations with a fully implemented EMS for their operations within Perisher Range Resorts.
			Percentage of lodges annually reviewing their environmental risks	<b>29</b>	To have all lodge committees annually reviewing and discussing their environmental risks.

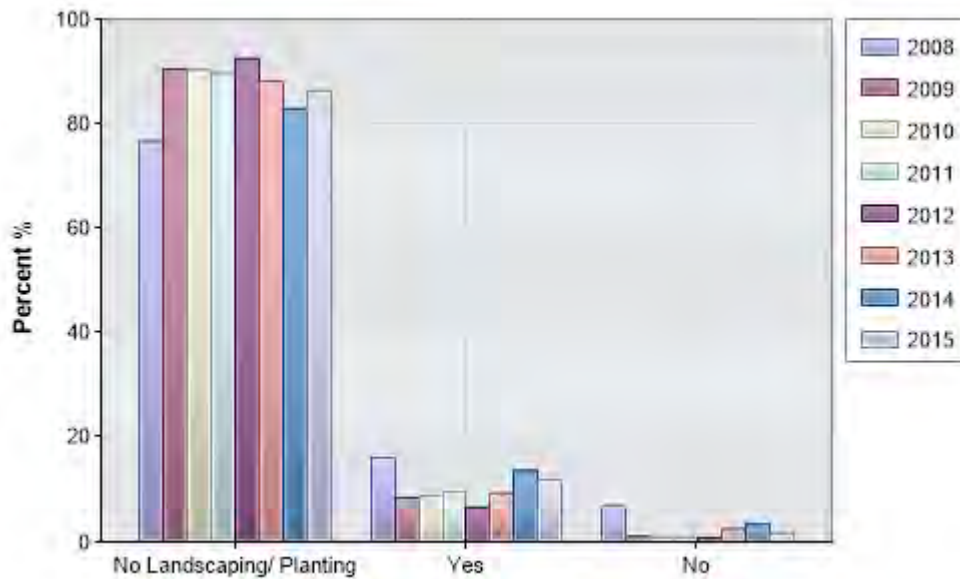
## ENVIRONMENTAL PERFORMANCE

### Flora and Fauna

#### Targets

Target 1: Lodges only using local native plants for landscaping. ✖

If you undertook planting around your lodge in the last 12 months, did you only use locally occurring native species?

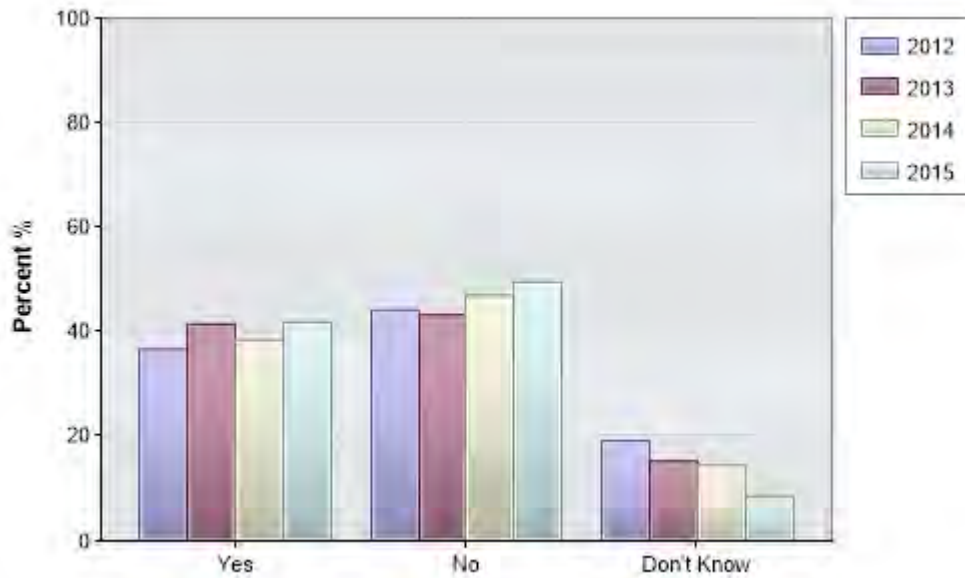


Year	No Landscaping/ Planting	Yes	No
2010 - 2011	90.4%	8.8%	0.9%
2011 - 2012	89.5%	9.6%	0.9%
2012 - 2013	92.5%	6.7%	0.8%
2013 - 2014	88.1%	9.3%	2.5%
2014 - 2015	82.9%	13.7%	3.4%
2015 - 2016	86.3%	12.0%	1.7%

Target 2: All lodges located in high priority areas on the Perisher Rehabilitation Plan to have rehab plans developed for their lease. ✖

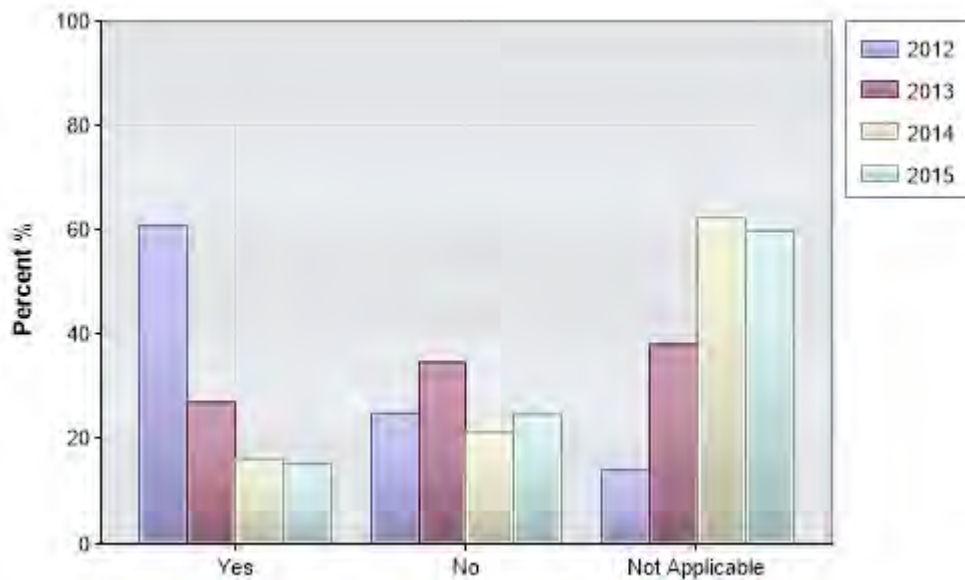
Is your lodge located in a high priority area on the Perisher Rehabilitation Plan (PRP)? (Refer to the fact sheet on the Support page for more information on the PRP)





Year	Yes	No	Don't Know
2012 - 2013	36.7%	44.2%	19.2%
2013 - 2014	41.5%	43.2%	15.3%
2014 - 2015	38.5%	47.0%	14.5%
2015 - 2016	41.9%	49.6%	8.5%

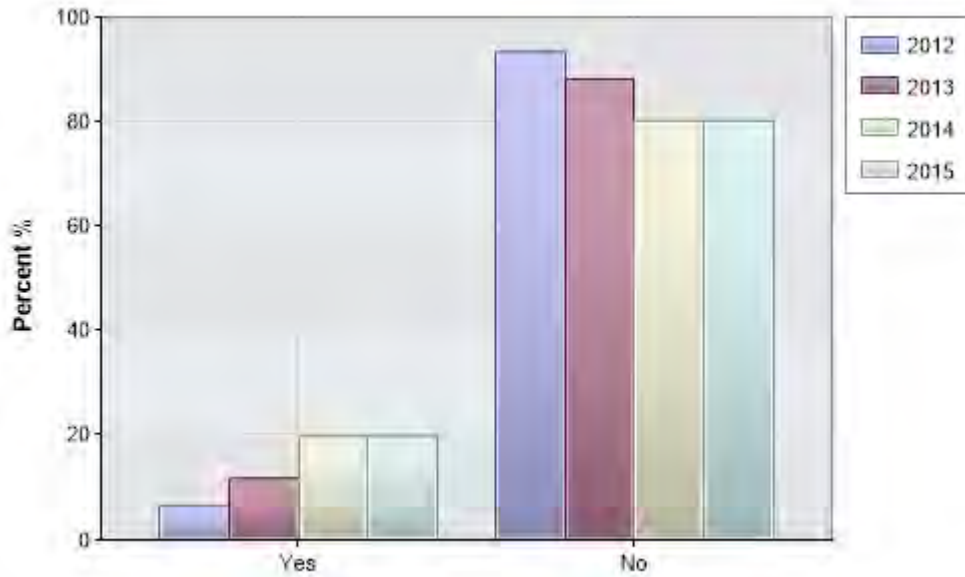
If yes, has your lodge developed a rehabilitation plan? (Refer to the fact sheet on the Support page for more information on the PRP)



Year	Yes	No	Not Applicable
2012 - 2013	60.8%	25.0%	14.2%
2013 - 2014	27.1%	34.7%	38.1%
2014 - 2015	16.2%	21.4%	62.4%
2015 - 2016	15.4%	24.8%	59.8%

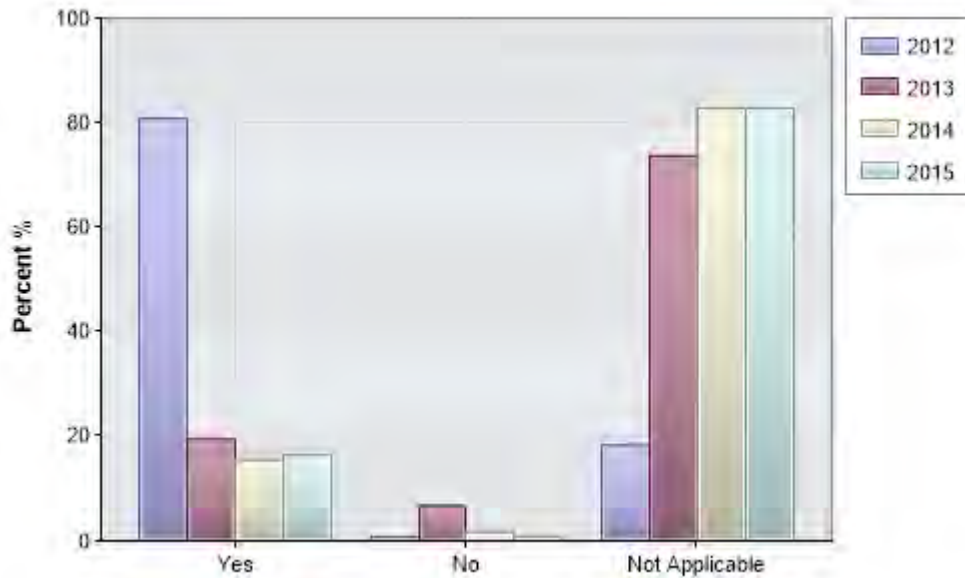
Target 3: No lodges using baits, snares, traps or rat poison as pest control without NPWS approval. ✖

Does your lodge use or have any baits, snares, traps or rat poison on its premises?



Year	Yes	No
2012 - 2013	6.7%	93.3%
2013 - 2014	11.9%	88.1%
2014 - 2015	19.8%	80.2%
2015 - 2016	19.8%	80.2%

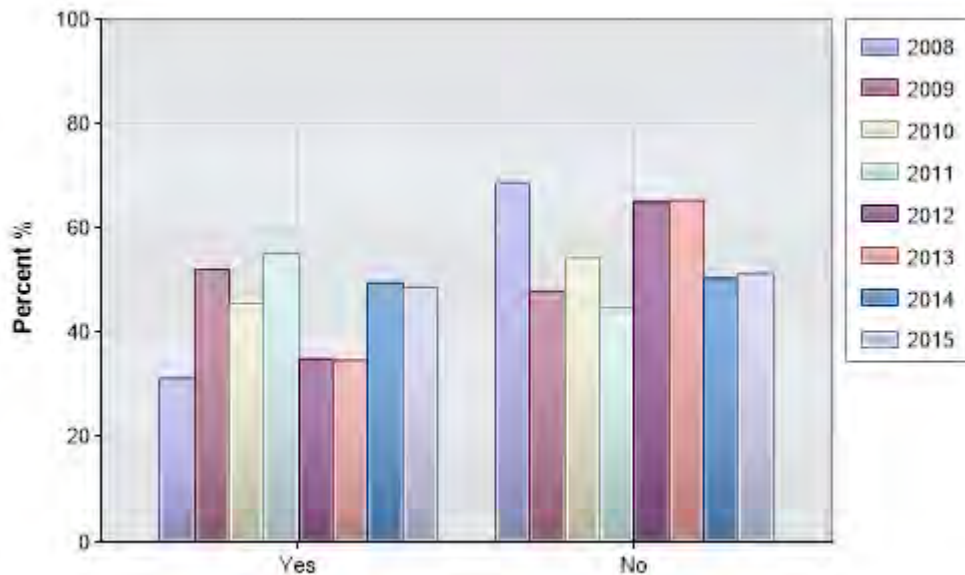
If yes, do you have NPWS approval for this pest control? Please add a comment and provide details.



Year	Yes	No	Not Applicable
2012 - 2013	80.8%	0.8%	18.3%
2013 - 2014	19.5%	6.8%	73.7%
2014 - 2015	15.5%	1.7%	82.8%
2015 - 2016	16.4%	0.9%	82.8%

Target 4: 60% of lodges undertaking weed control ✖

Have you undertaken any weed control around your lodge in the last 12 months? If you undertook weed control work, please add a comment to provide details.



Year	Yes	No
2010 - 2011	45.6%	54.4%
2011 - 2012	55.3%	44.7%
2012 - 2013	35.0%	65.0%
2013 - 2014	34.7%	65.3%
2014 - 2015	49.6%	50.4%
2015 - 2016	48.7%	51.3%

## Achieving the Objective

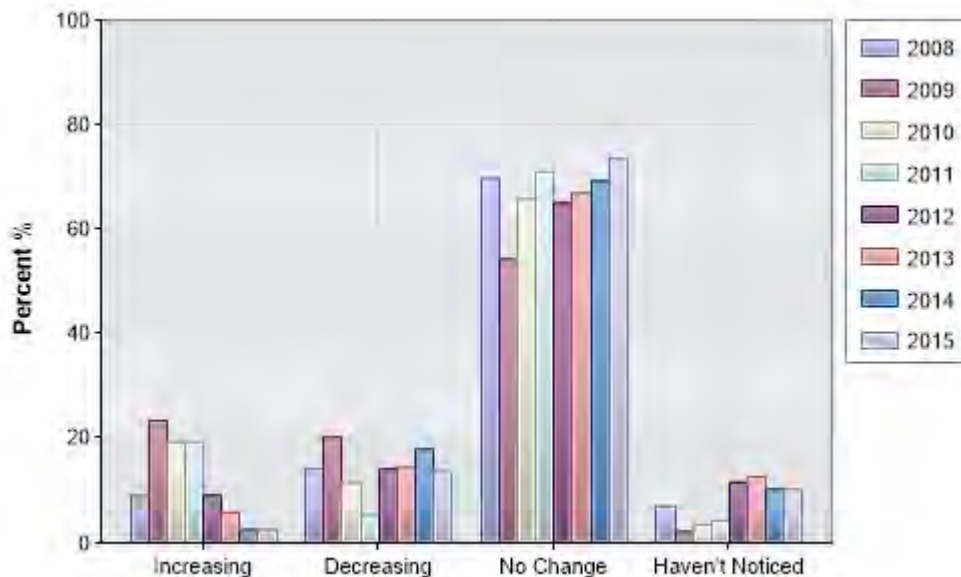
Have you cleared any vegetation around your lodge in the last 12 months?

Year	Yes	No
2012 - 2013	28.3%	71.7%
2013 - 2014	36.4%	63.6%
2014 - 2015	29.9%	70.1%
2015 - 2016	23.1%	76.9%

If yes, did you have development consent from Dept of Planning or approval from NPWS? If you did not have consent, please add a comment and provide details.

Year	Yes	No	Not Applicable
2012 - 2013	70.0%	4.2%	25.8%
2013 - 2014	40.7%	7.6%	51.7%
2014 - 2015	19.7%	5.1%	75.2%
2015 - 2016	15.4%	2.6%	82.1%

Has the number of weeds around your lodge changed from previous years?



Year	Increasing	Decreasing	No Change	<b>Haven't Noticed</b>
2010 - 2011	19.3%	11.4%	65.8%	3.5%
2011 - 2012	19.3%	5.3%	71.1%	4.4%
2012 - 2013	9.2%	14.2%	65.0%	11.7%
2013 - 2014	5.9%	14.4%	66.9%	12.7%
2014 - 2015	2.6%	17.9%	69.2%	10.3%
2015 - 2016	2.6%	13.7%	73.5%	10.3%

How have you identified what weeds exist around your lodge?

Year	Alps Invaders ID Book	Weed ID in Lodge Manual	Personal Experience	NPWS Contact	Group Weed Control Project	Have not identified weeds
2012 - 2013	20.0%	8.3%	16.7%	10.0%	0.0%	45.0%
2013 - 2014	26.3%	5.1%	17.8%	12.7%	0.8%	37.3%
2014 - 2015	23.1%	6.0%	20.5%	11.1%	0.9%	38.5%
2015 - 2016	19.7%	6.8%	21.4%	11.1%	0.9%	40.2%

Have you used an Elliot Trap in your lodge over the last 12 months? (refer to fact sheets under Support page)

Year	Yes	No	Don't Know
2012 - 2013	30.8%	64.2%	5.0%
2013 - 2014	39.0%	57.6%	3.4%
2014 - 2015	35.7%	60.0%	4.3%
2015 - 2016	35.3%	61.2%	3.4%

How many native small mammals have you caught in your lodge over the last 12 months using Elliott traps?

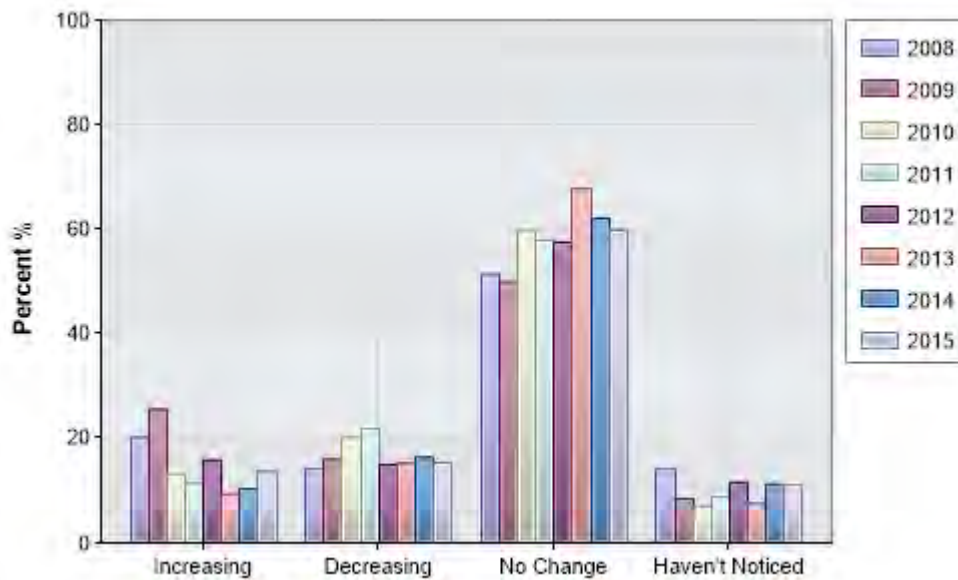
Year	Total
2010 - 2011	57
2011 - 2012	80
2012 - 2013	178
2013 - 2014	82
2014 - 2015	86
2015 - 2016	106

Have you had an issue with pests (rabbits, foxes, starlings, house mice or other non-native species) in or around your lodge in the last 12 months? Please add a comment and provide details.

Year	Yes – Major Issues	Yes – Minor Issues	No
2010 - 2011	6.1%	27.2%	66.7%
2011 - 2012	3.5%	31.6%	64.9%
2012 - 2013	4.2%	30.0%	65.8%
2013 - 2014	5.1%	33.9%	61.0%
2014 - 2015	2.6%	35.3%	62.1%
2015 - 2016	3.4%	30.8%	65.8%

Have the number of pests changed from previous years?

Year	Increasing	Decreasing	No Change	<b>Haven't Noticed</b>
2010 - 2011	13.2%	20.2%	59.6%	7.0%
2011 - 2012	11.4%	21.9%	57.9%	8.8%
2012 - 2013	15.8%	15.0%	57.5%	11.7%
2013 - 2014	9.3%	15.3%	67.8%	7.6%
2014 - 2015	10.3%	16.4%	62.1%	11.2%
2015 - 2016	13.7%	15.4%	59.8%	11.1%

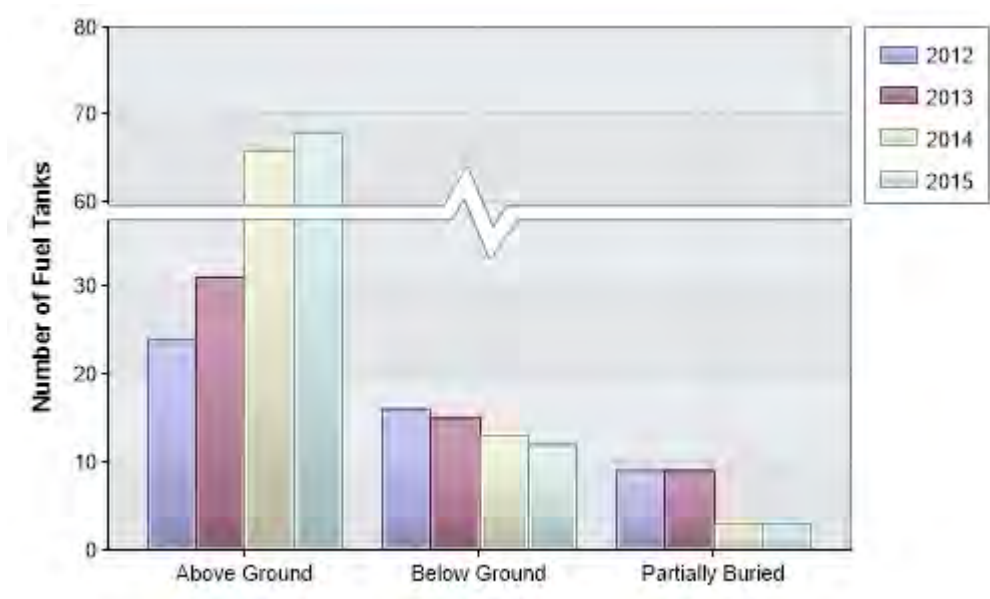


## Soil and Water

### Targets

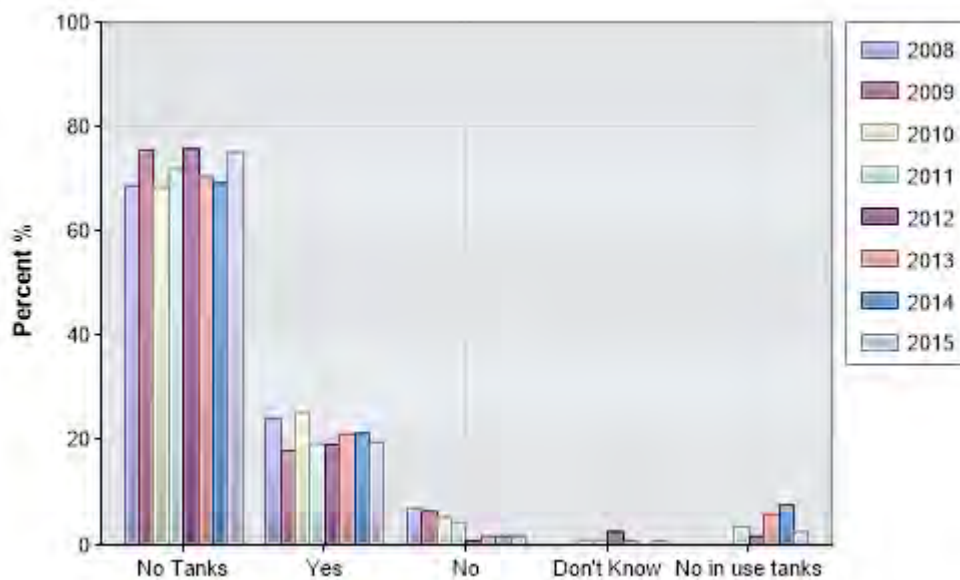
Target 5: 100% hydrocarbon storage containers compliant and managed appropriately. ✖

How many in use liquid hydrocarbon fuel tanks does your lodge have including heating oil tanks? (Please fill in each blank with a number, zero if you have none)



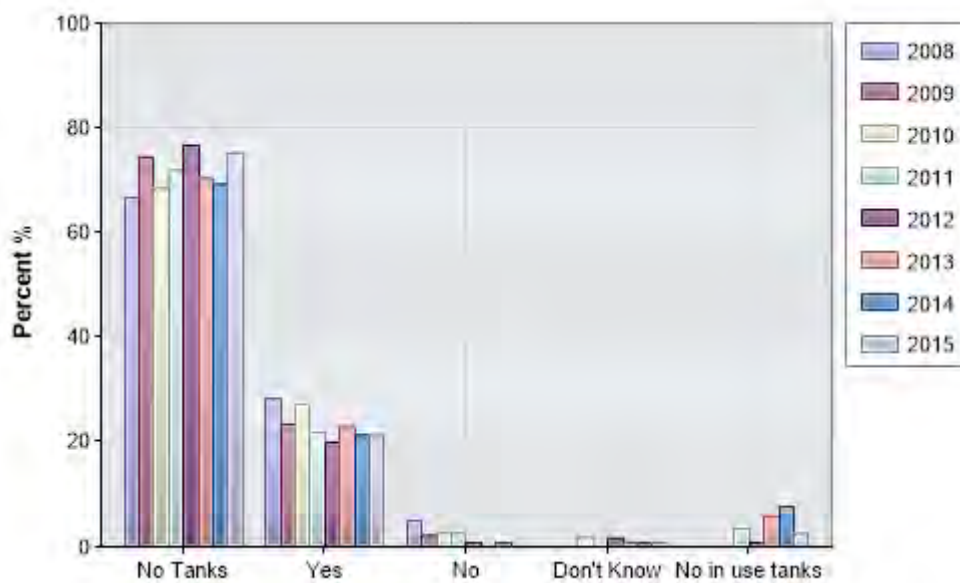
Year	Above Ground	Below Ground	Partially Buried
2012 - 2013	24	16	9
2013 - 2014	31	15	9
2014 - 2015	66	13	3
2015 - 2016	68	12	3

Are all of your lodge's hydrocarbon fuel storage tanks appropriately managed, including bunding around the filling point and tank to reduce environmental risk?



Year	No Tanks	Yes	No	Don't Know	No in use tanks
2010 - 2011	68.4%	25.4%	5.3%	0.9%	0.0%
2011 - 2012	71.9%	19.3%	4.4%	0.9%	3.5%
2012 - 2013	75.8%	19.2%	0.8%	2.5%	1.7%
2013 - 2014	70.3%	21.2%	1.7%	0.8%	5.9%
2014 - 2015	69.2%	21.4%	1.7%	0.0%	7.7%
2015 - 2016	75.2%	19.7%	1.7%	0.9%	2.6%

Do you have systems in place to detect and monitor for leaks in all of your fuel storage tanks? (This may include regularly checking filling and dispensing points, monitoring usage, integrity testing underground tanks or visually testing above ground tanks)

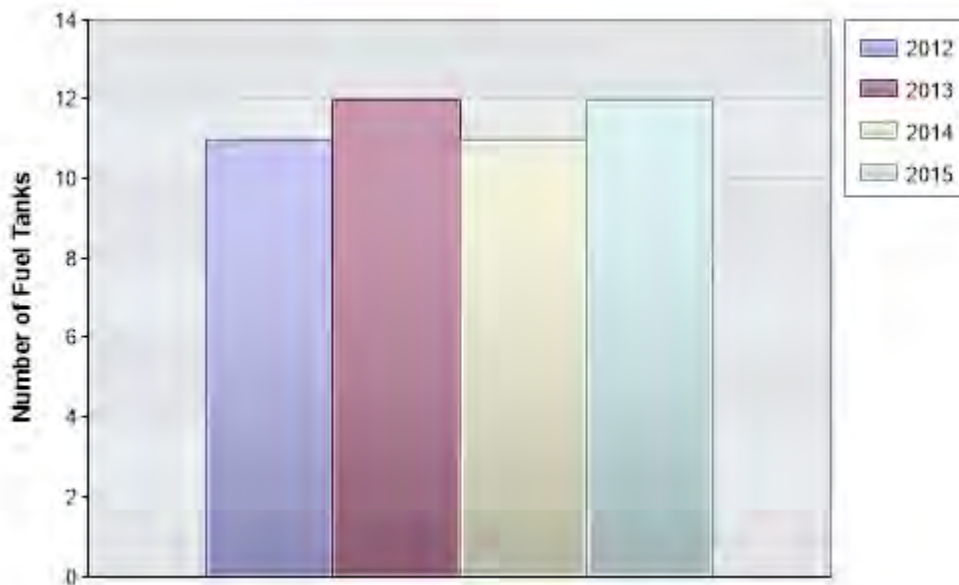




Year	No Tanks	Yes	No	Don't Know	No in use tanks
2010 - 2011	68.4%	27.2%	2.6%	1.8%	0.0%
2011 - 2012	71.9%	21.9%	2.6%	0.0%	3.5%
2012 - 2013	76.7%	20.0%	0.8%	1.7%	0.8%
2013 - 2014	70.3%	22.9%	0.0%	0.8%	5.9%
2014 - 2015	69.2%	21.4%	0.9%	0.9%	7.7%
2015 - 2016	75.2%	21.4%	0.0%	0.9%	2.6%

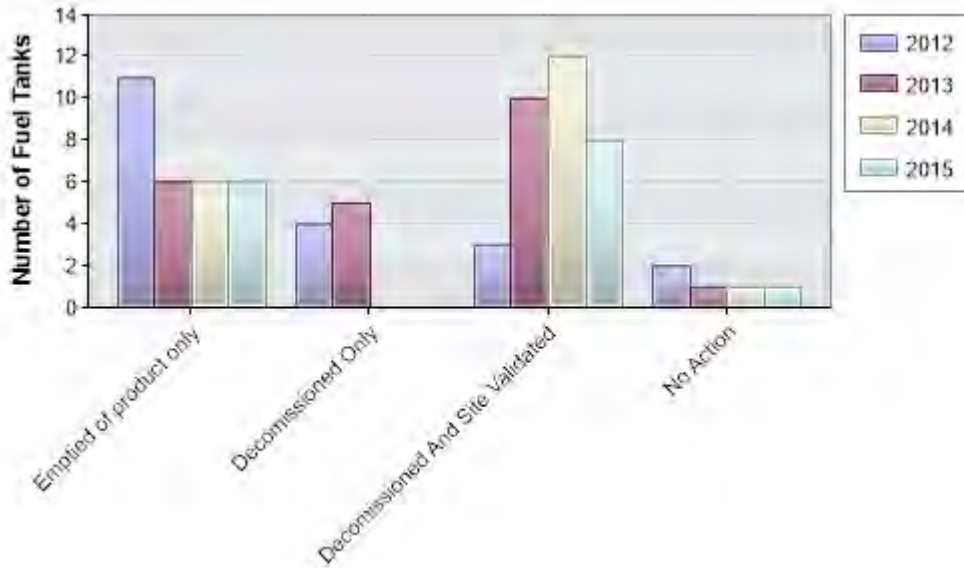
Target 6: All redundant hydrocarbon fuel storage tanks decommissioned and sites validated. \*

How many redundant hydrocarbon fuel storage tanks do you have? If your answer is zero, go straight to the Incident Management Section questions.



Year	Total
2012 - 2013	11
2013 - 2014	12
2014 - 2015	11
2015 - 2016	12

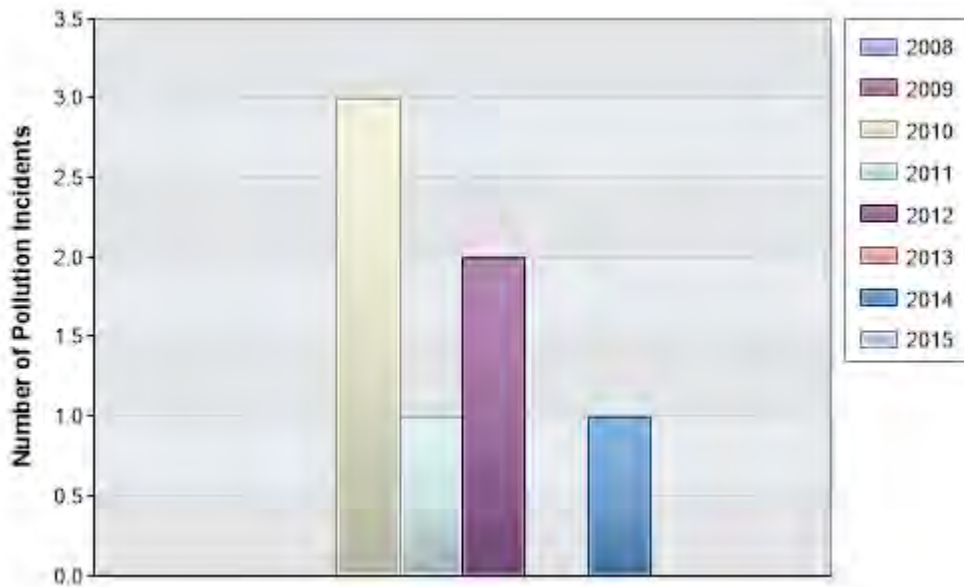
What actions have you undertaken to manage your fuel storage tanks that are no longer in use? (Please fill in each blank with the number of tanks that apply to each category, zero if you have none (Refer to UPSS regulation fact sheet on Support page). Please add a comment to provide details.



Year	Emptied of product only	Decommissioned Only	Decommissioned And Site Validated	No Action
2012 - 2013	11	4	3	2
2013 - 2014	6	5	10	1
2014 - 2015	6	0	12	1
2015 - 2016	6	0	8	1

Target 7: Zero pollution incidents. ✓

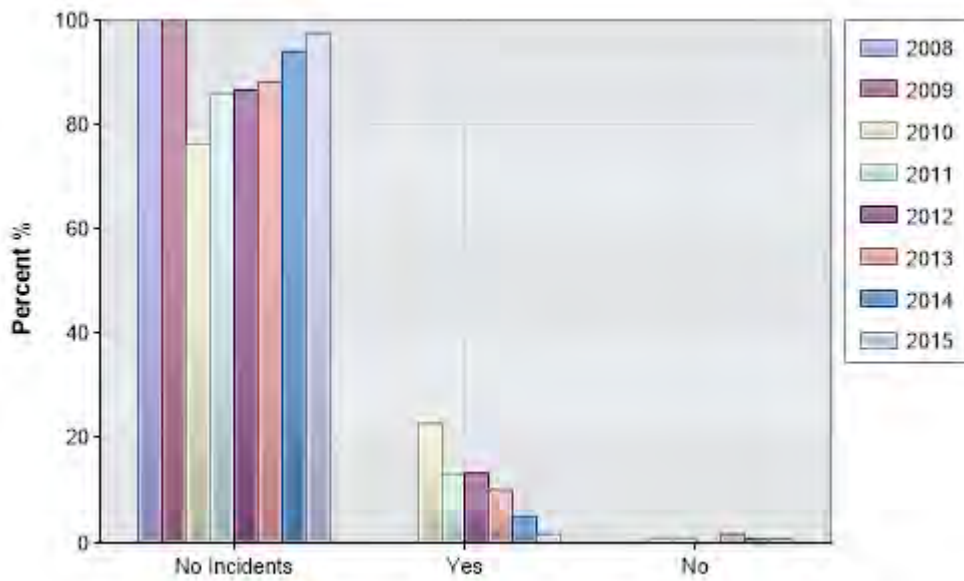
How many pollution incidents has your lodge had in the last 12 months? If you had an incident(s), please provide details in comments



Year	Total
2010 - 2011	3
2011 - 2012	1
2012 - 2013	2
2013 - 2014	0
2014 - 2015	1
2015 - 2016	0

Target 8: 100% of significant incidents reported to NPWS. ✖

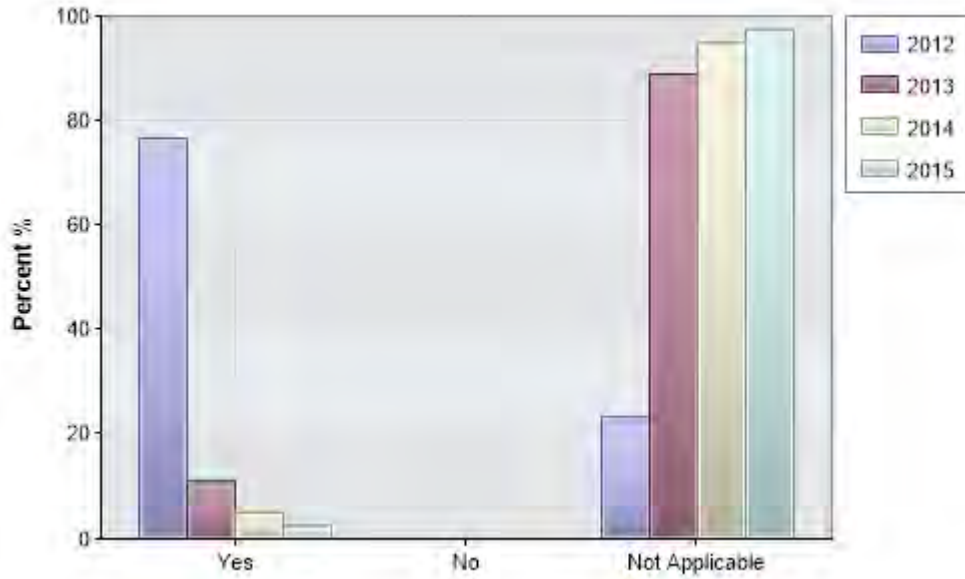
If an incident(s) occurred at your lodge within the last 12 months was the PRREMS Reporting Procedure followed?



Year	No Incidents	Yes	No
2010 - 2011	76.3%	22.8%	0.9%
2011 - 2012	86.0%	13.2%	0.9%
2012 - 2013	86.7%	13.3%	0.0%
2013 - 2014	88.1%	10.2%	1.7%
2014 - 2015	94.0%	5.1%	0.9%
2015 - 2016	97.4%	1.7%	0.9%

Target 9: 100% incidents managed in a timely manner. ✓

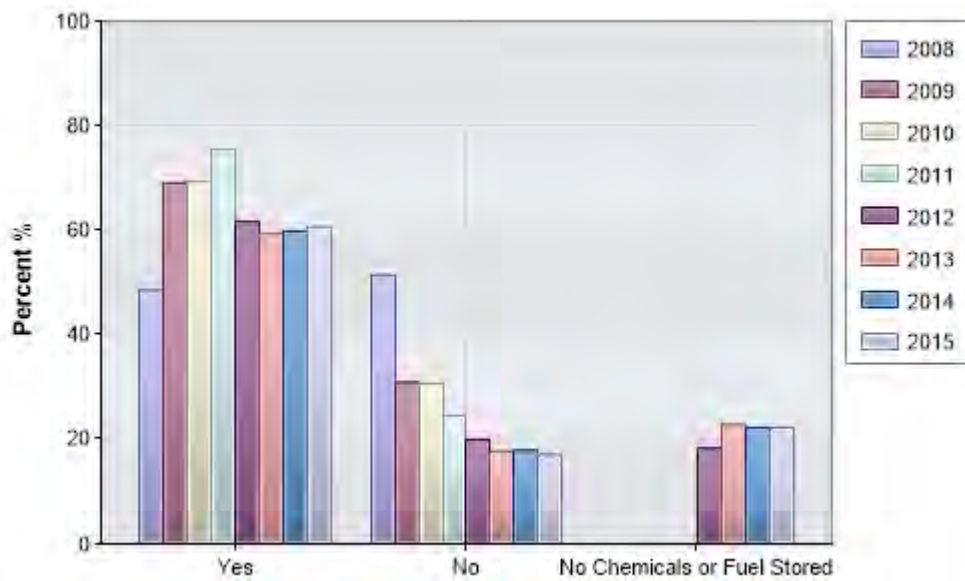
If incident(s) occurred, did you report the incident within a timely manner?



Year	Yes	No	Not Applicable
2012 - 2013	76.7%	0.0%	23.3%
2013 - 2014	11.0%	0.0%	89.0%
2014 - 2015	5.1%	0.0%	94.9%
2015 - 2016	2.6%	0.0%	97.4%

Target 10: 100% of lodges who store chemicals/fuel to have well equipped spill kits. \*

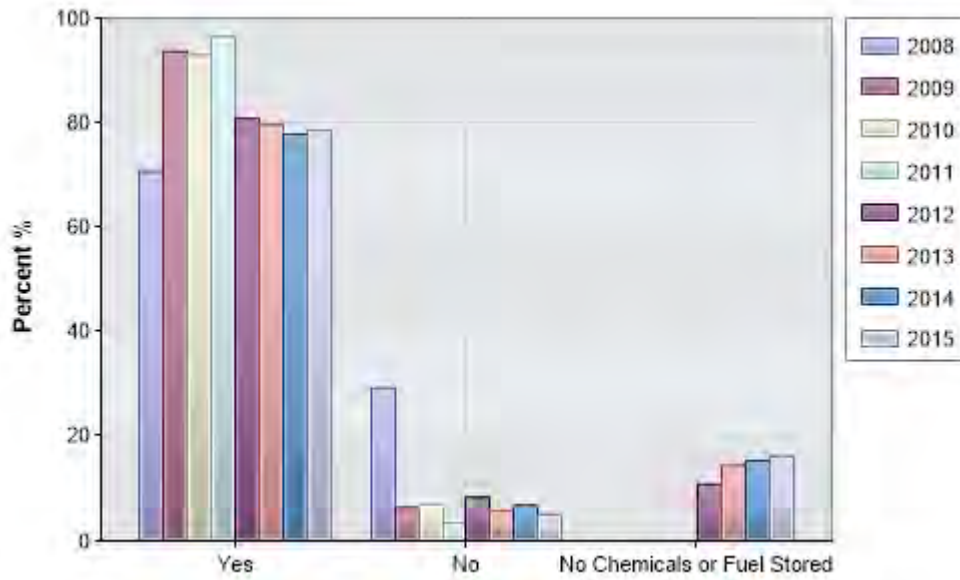
Does your lodge have a spill kit to use in the event of a pollution incident?



Year	Yes	No	No Chemicals or Fuel Stored
2010 - 2011	69.3%	30.7%	0.0%
2011 - 2012	75.4%	24.6%	0.0%
2012 - 2013	61.7%	20.0%	18.3%
2013 - 2014	59.3%	17.8%	22.9%
2014 - 2015	59.8%	17.9%	22.2%
2015 - 2016	60.7%	17.1%	22.2%

Target 11: 100% of lodges who store chemicals/fuel clearly displaying PRREMS Lodge Incident Procedure. ✘

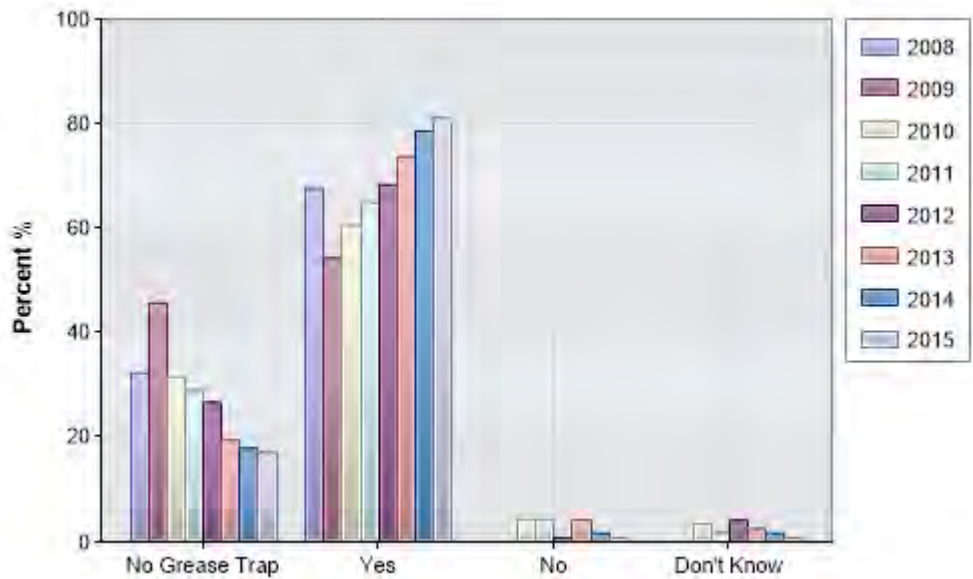
Do you have the PRREMS Lodge Environment Incident Procedure clearly displayed in your lodge?



Year	Yes	No	No Chemicals or Fuel Stored
2010 - 2011	93.0%	7.0%	0.0%
2011 - 2012	96.5%	3.5%	0.0%
2012 - 2013	80.8%	8.3%	10.8%
2013 - 2014	79.7%	5.9%	14.4%
2014 - 2015	77.8%	6.8%	15.4%
2015 - 2016	78.6%	5.1%	16.2%

Target 12: 100% of grease traps working effectively \*

Is your grease trap working effectively? (Refer to Grease Trap Maintenance Guide under the Support page)



Year	No Grease Trap	Yes	No	Don't Know
2010 - 2011	31.6%	60.5%	4.4%	3.5%
2011 - 2012	28.9%	64.9%	4.4%	1.8%
2012 - 2013	26.7%	68.3%	0.8%	4.2%
2013 - 2014	19.5%	73.7%	4.2%	2.5%
2014 - 2015	17.9%	78.6%	1.7%	1.7%
2015 - 2016	17.1%	81.2%	0.9%	0.9%

Achieving the Objectives

Have you provided validation reports and documentation to NPWS for your decommissioned or recently (in the last 5 years) removed tanks? (Refer to UPSS regulation fact sheet on Support page). Please add a comment and provide details.

Year	No underground tanks	Yes	No	Tanks still in use	Tanks have not been decommissioned
2011 - 2012	93	1	5	7	8
2012 - 2013	118	1	0	0	1
2013 - 2014	97	6	5	4	6
2014 - 2015	93	9	5	6	4
2015 - 2016	3	4	110	0	0

Does your boiler room have a floor waste drain?

Year	Yes	No	Don't Know	Don't have a boiler room
2011 - 2012	11.4%	9.6%	6.1%	72.8%
2012 - 2013	5.8%	15.8%	8.3%	70.0%
2013 - 2014	11.0%	12.7%	5.1%	71.2%

If your lodge stores chemicals (i.e. cleaning agents, paint, fuel) can the storage area contain a spill if it occurs (at 110% capacity)?

Year	No Chemicals Stored	Yes	No
2010 - 2011	57.0%	38.6%	4.4%
2011 - 2012	52.6%	42.1%	5.3%
2012 - 2013	45.8%	50.0%	4.2%
2013 - 2014	45.8%	47.5%	6.8%
2014 - 2015	39.3%	55.6%	5.1%
2015 - 2016	37.6%	58.1%	4.3%

Do you know where your lodge's grease trap is located?

Year	Yes	No	No Grease Trap
2012 - 2013	79.2%	2.5%	18.3%
2013 - 2014	82.2%	1.7%	16.1%
2014 - 2015	83.8%	1.7%	14.5%
2015 - 2016	82.9%	1.7%	15.4%

Has someone in your lodge or a hired contractor inspected your grease trap in the last 12 months? Note: NPWS pumps out your grease trap annually, but you are required to maintain it.

Year	No Grease Trap	Yes	No	Don't Know
2010 - 2011	31.6%	61.4%	4.4%	2.6%
2011 - 2012	28.9%	65.8%	2.6%	2.6%
2012 - 2013	25.0%	61.7%	3.3%	10.0%
2013 - 2014	19.5%	68.6%	8.5%	3.4%
2014 - 2015	17.9%	70.1%	9.4%	2.6%
2015 - 2016	17.1%	69.2%	9.4%	4.3%

Does your lodge use only biodegradable detergents (low or no Phosphates) for washing dishes, clothes/linen?

Year	Yes	No
2010 - 2011	91.2%	8.8%
2011 - 2012	93.0%	7.0%
2012 - 2013	90.8%	9.2%
2013 - 2014	93.2%	6.8%
2014 - 2015	93.2%	6.8%
2015 - 2016	93.2%	6.8%

Does your lodge or cleaning contractor use only eco-friendly cleaning products?

Year	Yes	No	Don't Know
2010 - 2011	89.5%	6.1%	4.4%
2011 - 2012	90.4%	8.8%	0.9%
2012 - 2013	86.7%	5.0%	8.3%
2013 - 2014	88.1%	5.9%	5.9%
2014 - 2015	89.7%	5.1%	5.1%
2015 - 2016	89.7%	6.0%	4.3%

Are your lodge vehicles (including skidoos) regularly serviced and maintained?

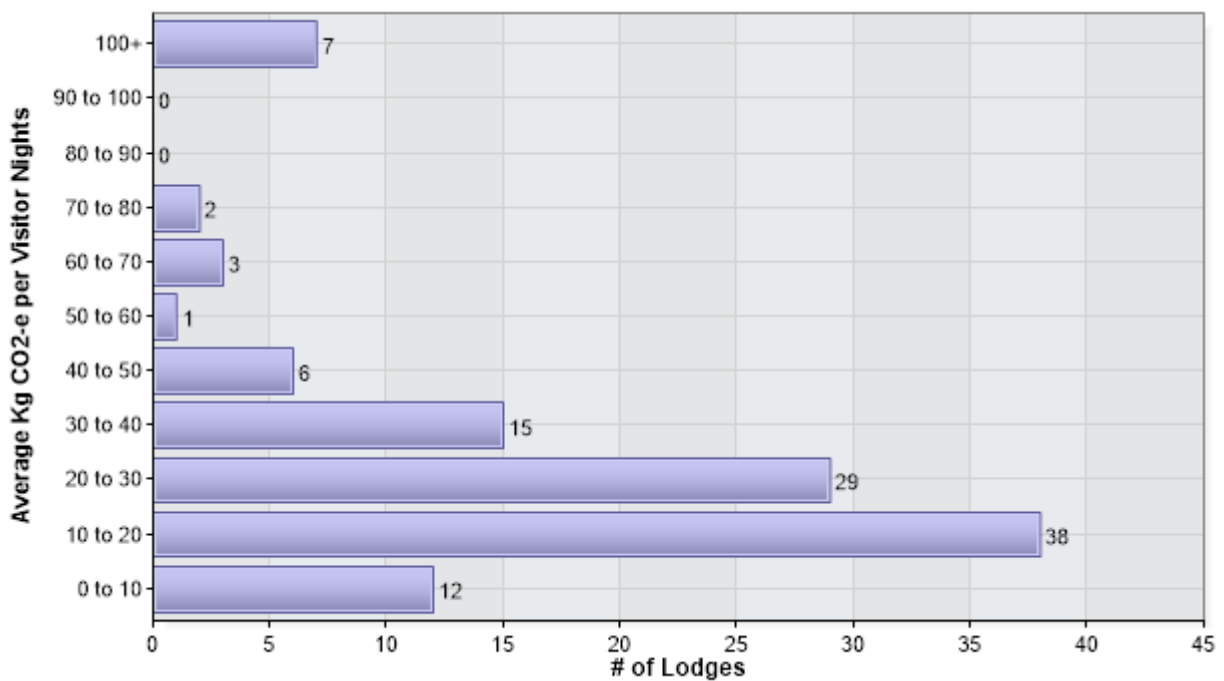
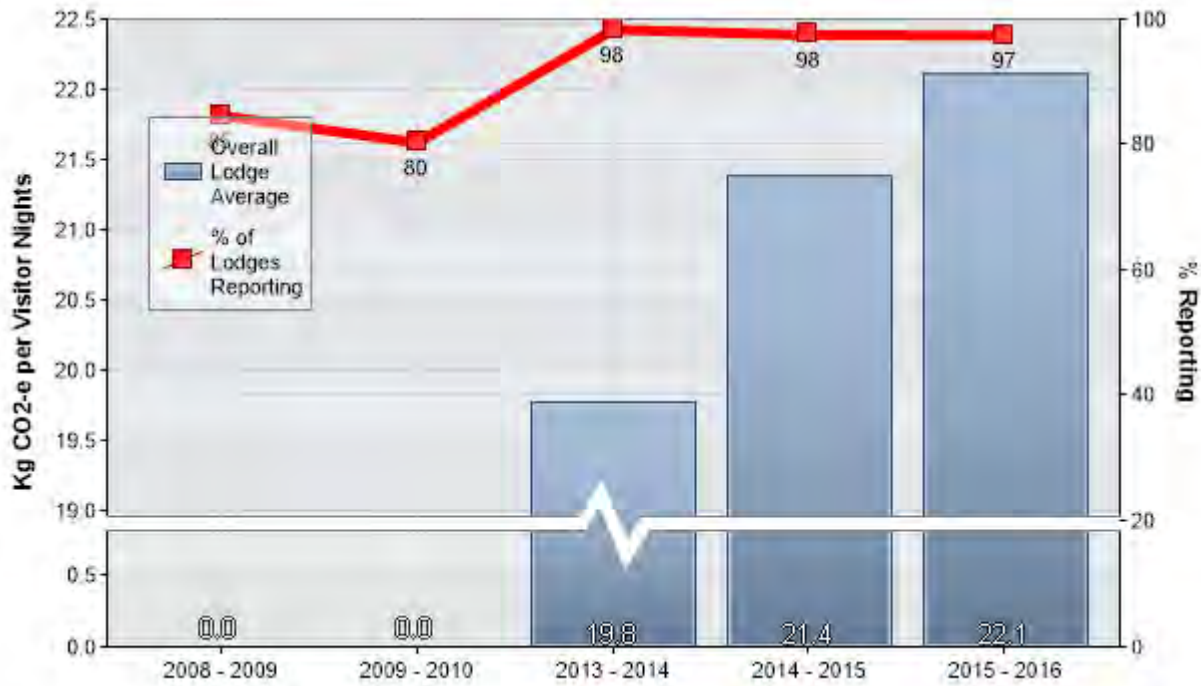
Year	No Vehicles	Yes	No
2010 - 2011	62.3%	37.7%	0.0%
2011 - 2012	68.4%	31.6%	0.0%
2012 - 2013	62.5%	37.5%	0.0%
2013 - 2014	60.2%	39.8%	0.0%
2014 - 2015	57.3%	42.7%	0.0%
2015 - 2016	57.3%	42.7%	0.0%



## Air Quality

### Targets

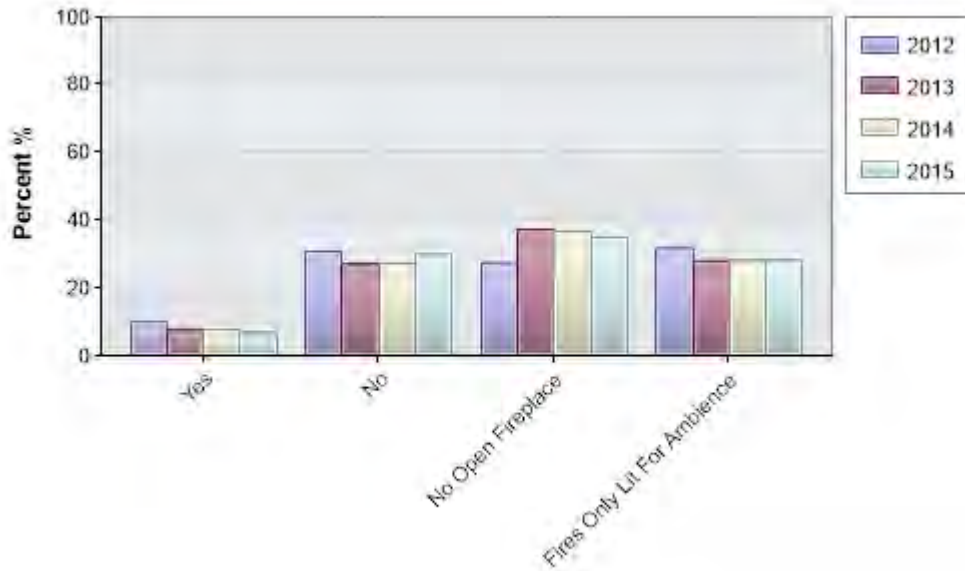
Target 13: To reduce amount of CO2 equivalent emitted per visitor night. ✖



Year	Total
2013 - 2014	19.8
2014 - 2015	21.4
2015 - 2016	22.1

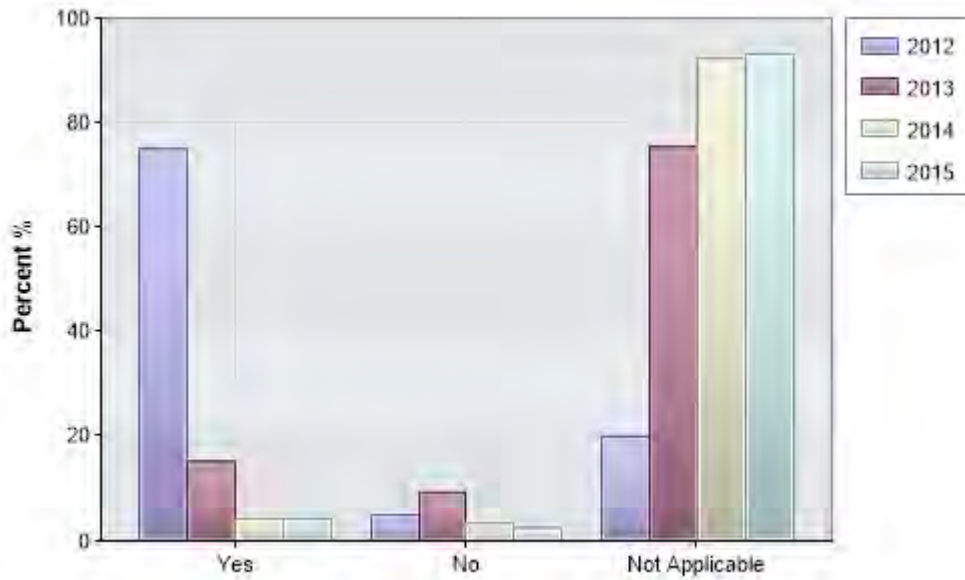
Target 14: Less than 10% of lodges using open fireplaces as their primary source of heating. ★

Do you use an open fireplace as your primary source of heating?



Year	Yes	No	No Open Fireplace	Fires Only Lit For Ambience
2012 - 2013	10.0%	30.8%	27.5%	31.7%
2013 - 2014	7.6%	27.1%	37.3%	28.0%
2014 - 2015	7.7%	27.4%	36.8%	28.2%
2015 - 2016	6.8%	29.9%	35.0%	28.2%

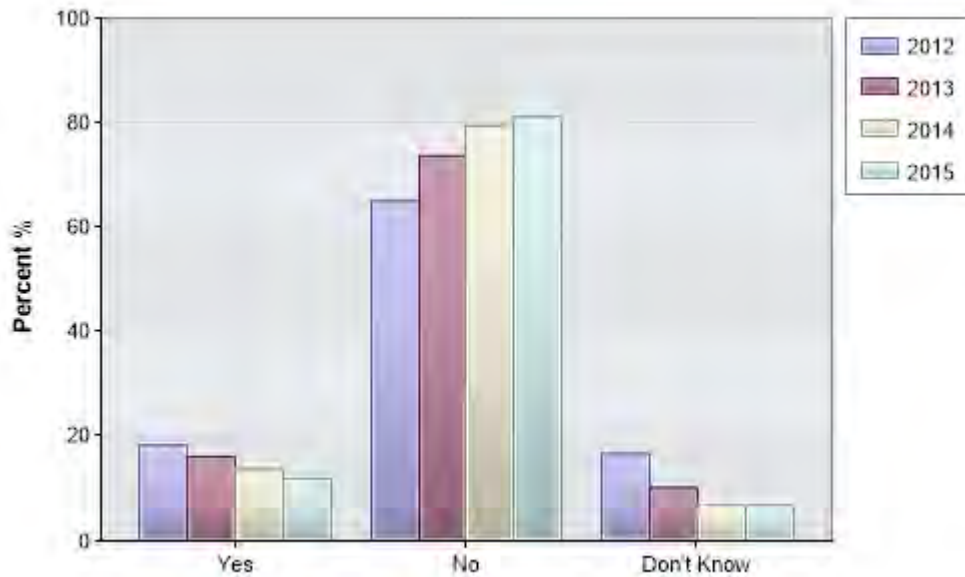
If yes, Do you have a replacement program to install an energy-efficient heater that uses a cleaner source of fuel?



Year	Yes	No	Not Applicable
2012 - 2013	75.0%	5.0%	20.0%
2013 - 2014	15.3%	9.3%	75.4%
2014 - 2015	4.3%	3.4%	92.3%
2015 - 2016	4.3%	2.6%	93.2%

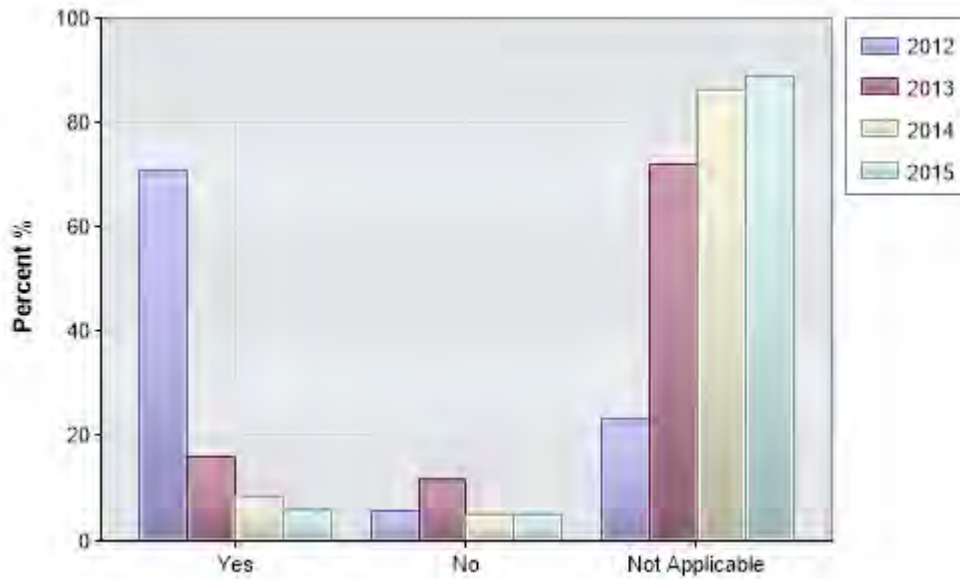
Target 15: Less than 20% of lodges using ODS appliances. ★

Do you have appliances that use Ozone Depleting Substances (ODS)?



Year	Yes	No	Don't Know
2012 - 2013	18.3%	65.0%	16.7%
2013 - 2014	16.1%	73.7%	10.2%
2014 - 2015	13.7%	79.5%	6.8%
2015 - 2016	12.0%	81.2%	6.8%

If yes, have you developed a replacement program for non-ODS appliances?



Year	Yes	No	Not Applicable
2012 - 2013	70.8%	5.8%	23.3%
2013 - 2014	16.1%	11.9%	72.0%
2014 - 2015	8.5%	5.1%	86.3%
2015 - 2016	6.0%	5.1%	88.9%

## Achieving the Objectives

Did you inspect your chimney or flue before & after the winter season to check for build-up of soot & clean it as necessary?

Year	No chimneys in use	Yes	No
2010 - 2011	38.6%	56.1%	5.3%
2011 - 2012	42.1%	53.5%	4.4%
2012 - 2013	40.8%	54.2%	5.0%
2013 - 2014	43.2%	52.5%	4.2%
2014 - 2015	41.9%	55.6%	2.6%
2015 - 2016	39.3%	56.4%	4.3%

## Waste and Recycling

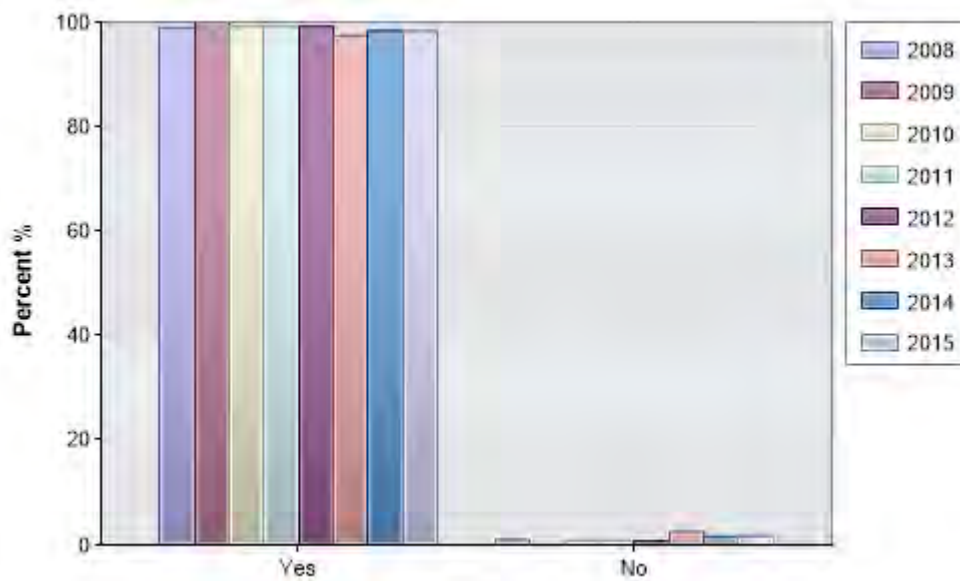
### Targets

Target 16: To reduce amount of waste produced

Chart to be displayed here.

Target 17: 100% of lodges recycling.

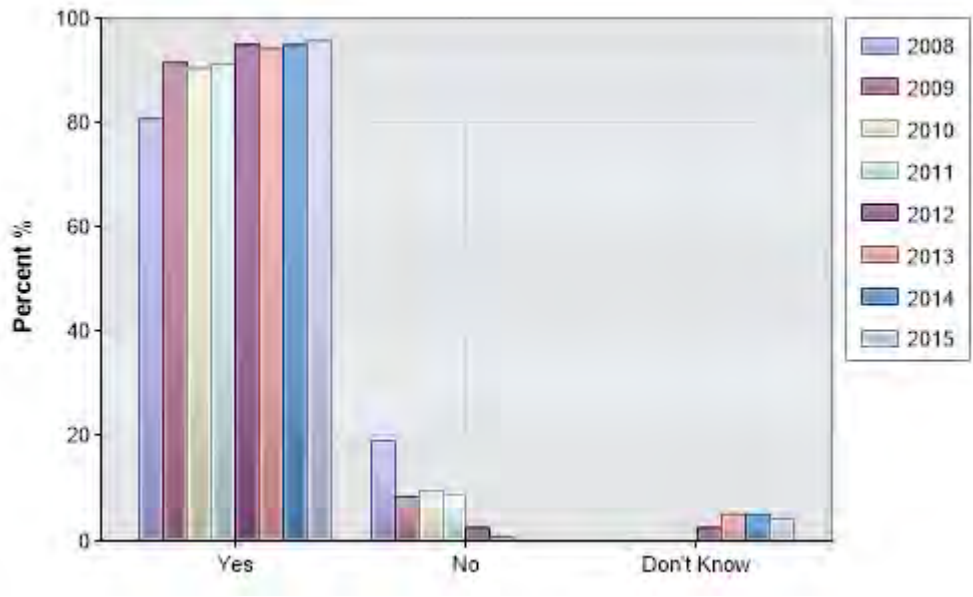
Do you provide appropriate facilities in your lodge for members, guests and staff to recycle? If No please add a comment to explain why.



Year	Yes	No
2010 - 2011	99.1%	0.9%
2011 - 2012	99.1%	0.9%
2012 - 2013	99.2%	0.8%
2013 - 2014	97.5%	2.5%
2014 - 2015	98.3%	1.7%
2015 - 2016	98.3%	1.7%

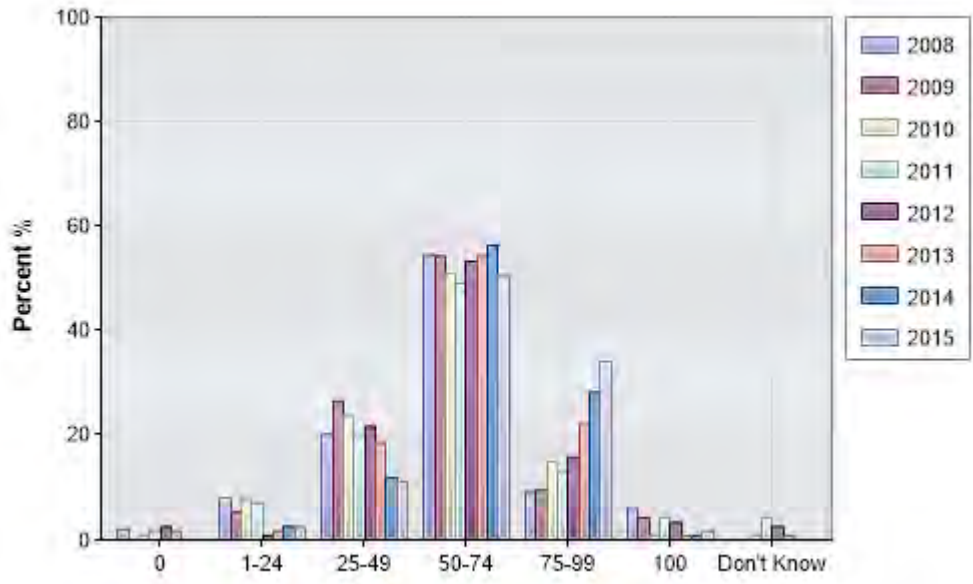
Target 18: To recycle more than 50% of total waste.

Does your lodge recycle all of the products listed in the manual?



Year	Yes	No	Don't Know
2010 - 2011	90.4%	9.6%	0.0%
2011 - 2012	91.2%	8.8%	0.0%
2012 - 2013	95.0%	2.5%	2.5%
2013 - 2014	94.1%	0.8%	5.1%
2014 - 2015	94.9%	0.0%	5.1%
2015 - 2016	95.7%	0.0%	4.3%

Please estimate what percentage of your lodge's waste is recycled?



Year	0	1-24	25-49	50-74	75-99	100	Don't Know
2010 - 2011	0.9%	7.9%	23.7%	50.9%	14.9%	0.9%	0.9%
2011 - 2012	1.8%	7.0%	20.2%	49.1%	13.2%	4.4%	4.4%
2012 - 2013	2.5%	0.8%	21.7%	53.3%	15.8%	3.3%	2.5%
2013 - 2014	1.7%	1.7%	18.6%	54.2%	22.0%	0.8%	0.8%
2014 - 2015	0.0%	2.6%	12.0%	56.4%	28.2%	0.9%	0.0%
2015 - 2016	0.0%	2.6%	11.1%	50.4%	34.2%	1.7%	0.0%

## Achieving the objectives

Do you provide signs or other measures to encourage guests, visitors and staff to minimise waste generation and/or separate recycling? Please add a comment to provide details or any significant initiatives.

Year	Yes	No	Planning To
2012 - 2013	91.7%	1.7%	6.7%
2013 - 2014	91.5%	7.6%	0.8%
2014 - 2015	94.9%	5.1%	0.0%
2015 - 2016	95.7%	4.3%	0.0%

Have you initiated a lodge program for guests, visitors and staff to reduce and reuse materials before putting them in a recycling bin? e.g. liquid soap dispensers, refill plastic water bottles from tap, reusing take-away containers, refilling printer cartridges, etc.

Year	Yes	No	Planning To
2012 - 2013	60.8%	33.3%	5.8%
2013 - 2014	69.5%	26.3%	4.2%
2014 - 2015	69.2%	26.5%	4.3%
2015 - 2016	71.8%	25.6%	2.6%

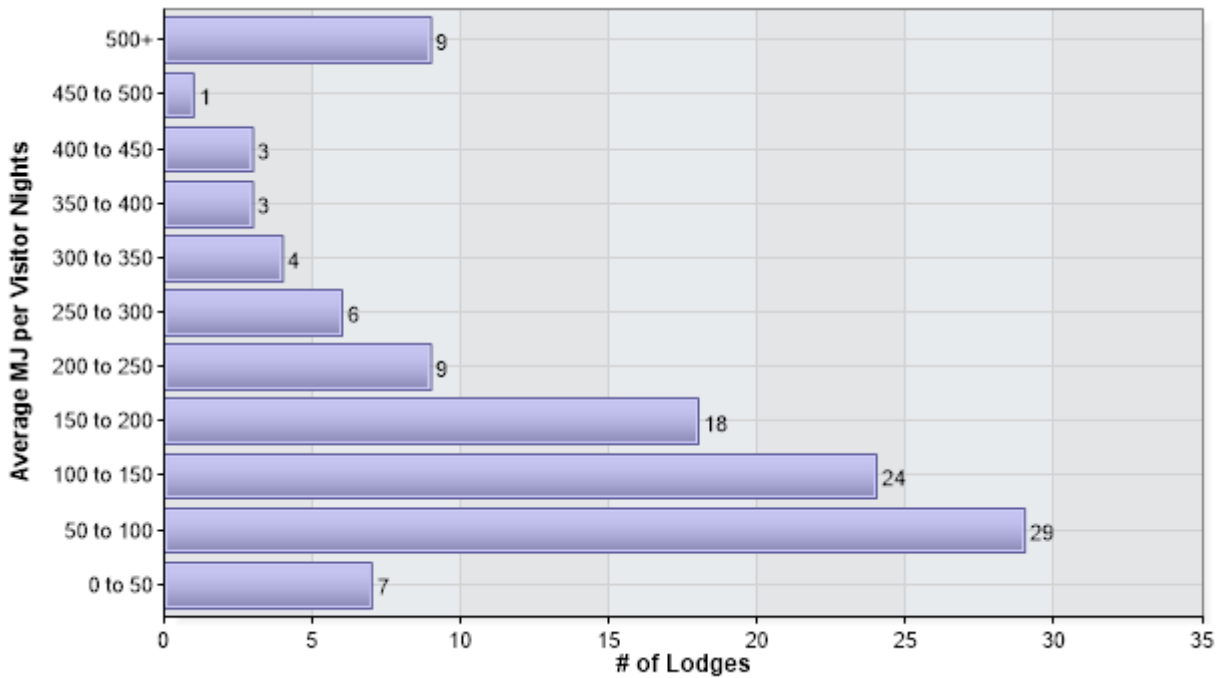
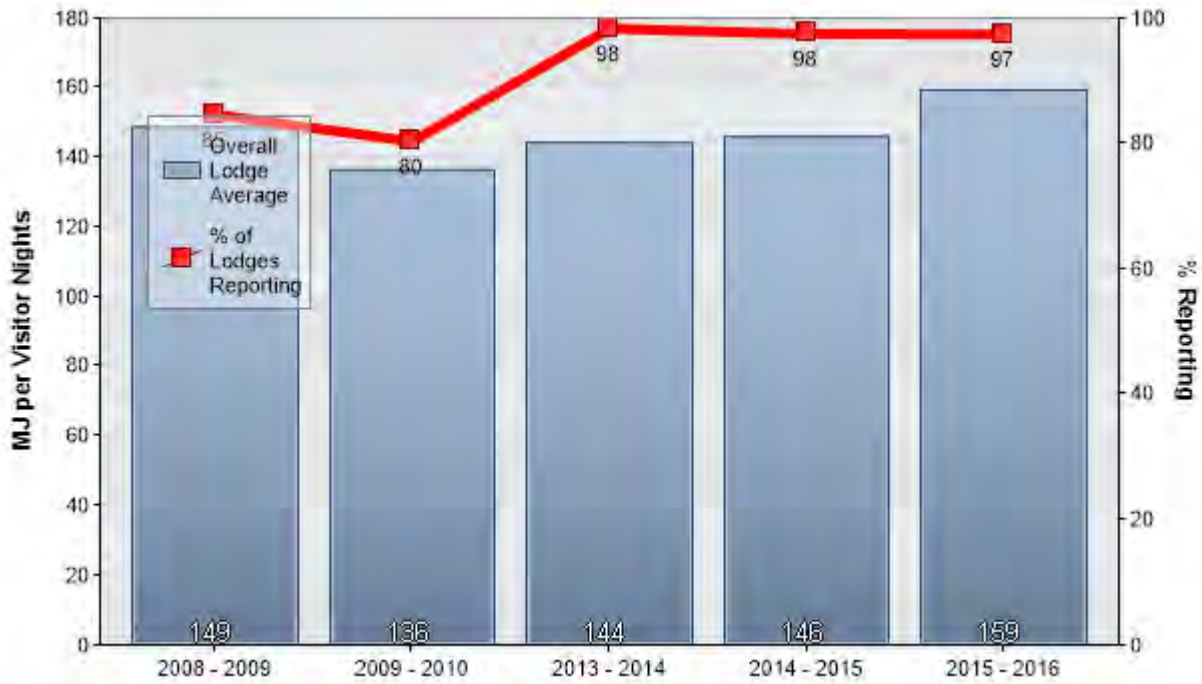
Does your lodge use biodegradable (other than cleaning) products? e.g. packaging, take-away containers, etc.

Year	Yes	No	Planning To
2012 - 2013	58.3%	38.3%	3.3%
2013 - 2014	69.5%	28.0%	2.5%
2014 - 2015	68.4%	29.9%	1.7%
2015 - 2016	70.1%	28.2%	1.7%

## Energy

### Targets

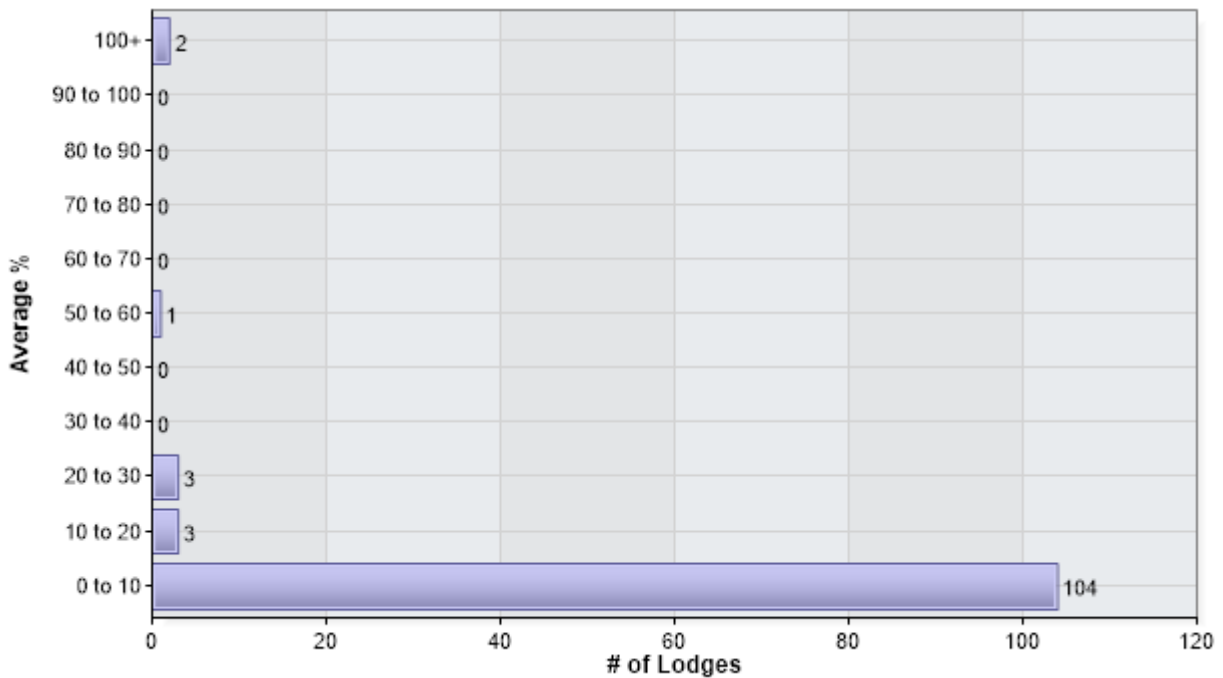
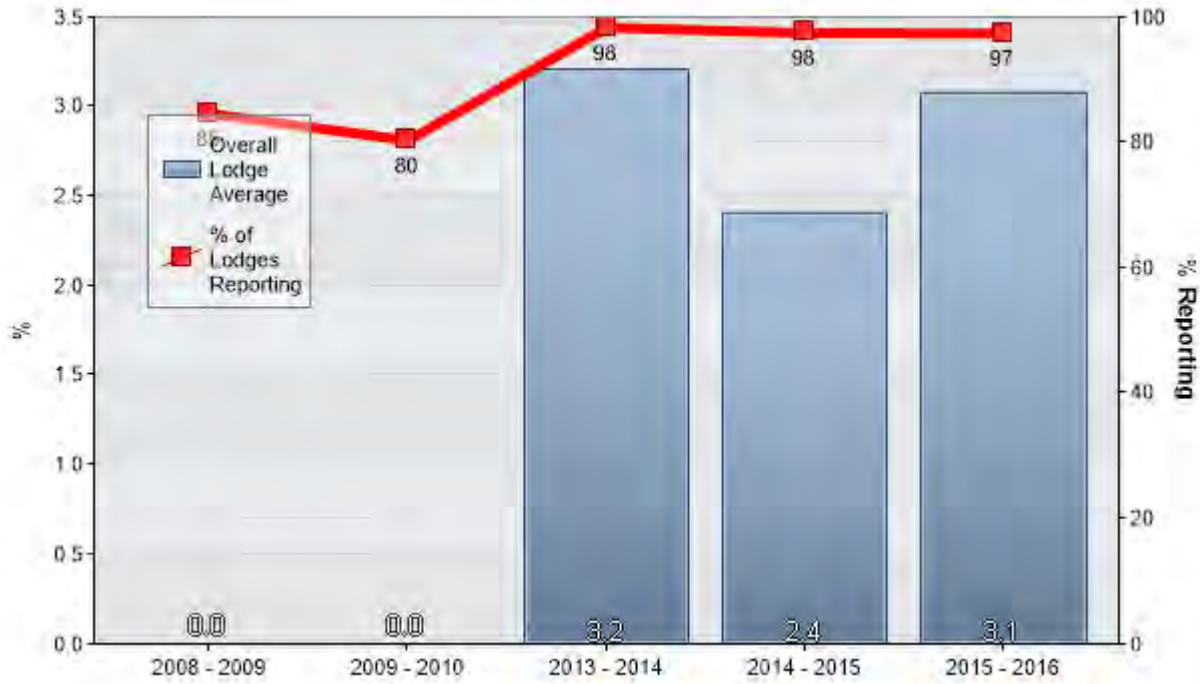
Target 19: To reduce energy used per visitor night by 5% annually. \*





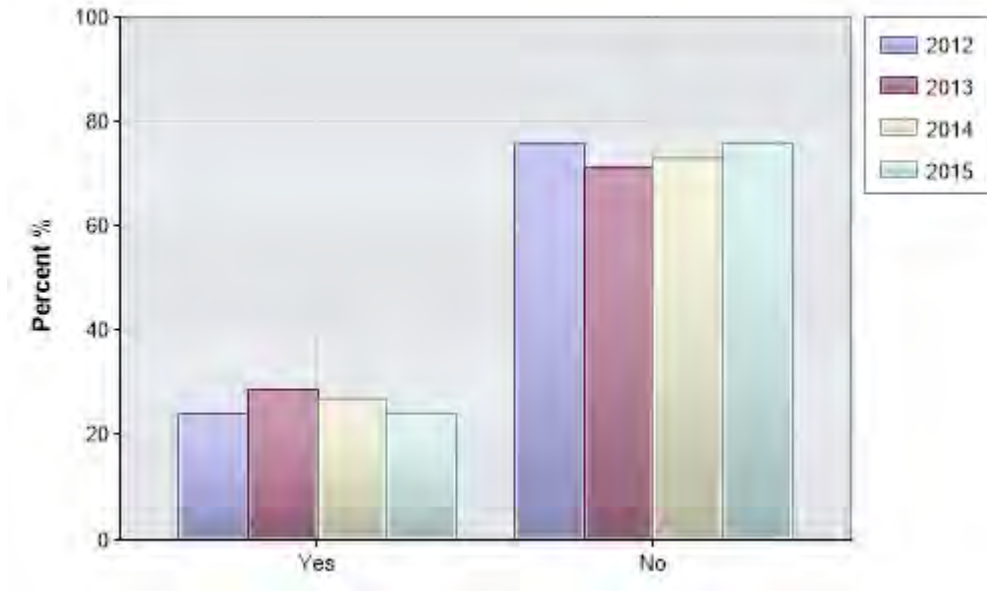
Year	Total
2013 - 2014	144.3
2014 - 2015	146.0
2015 - 2016	159.4

Target 20: More than 5% of total energy used to come from renewable sources. \*



Year	Total
2013 - 2014	3.2
2014 - 2015	2.4
2015 - 2016	3.1

Do you purchase green power from your electricity provider?



Year	Yes	No
2012 - 2013	24.2%	75.8%
2013 - 2014	28.8%	71.2%
2014 - 2015	27.0%	73.0%
2015 - 2016	24.1%	75.9%

## Achieving the Objectives

Did you conduct an energy audit in the last 12 months?

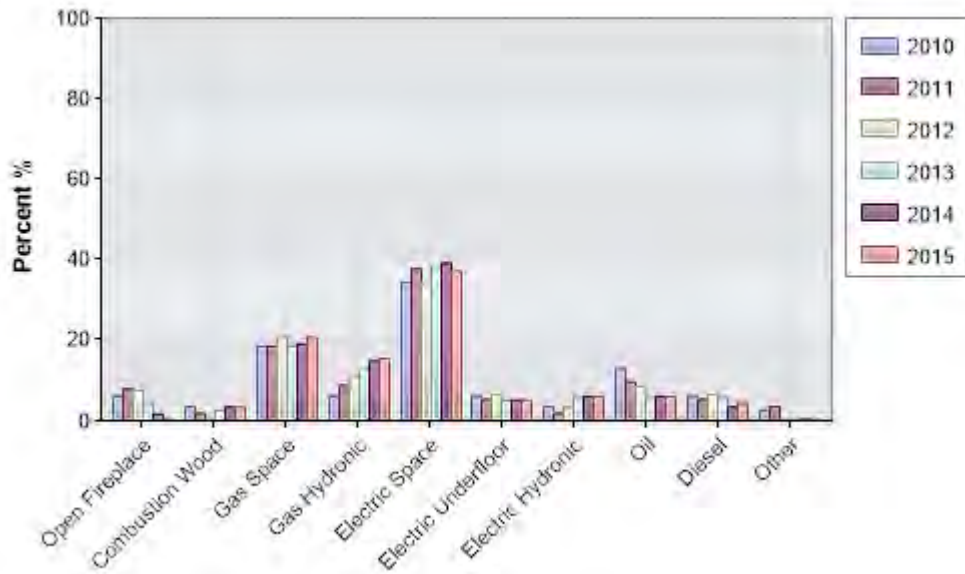
Year	Yes	No
2010 - 2011	51.8%	48.2%
2011 - 2012	55.3%	44.7%
2012 - 2013	54.2%	45.8%
2013 - 2014	54.2%	45.8%
2014 - 2015	51.7%	48.3%
2015 - 2016	51.7%	48.3%

What is the main source of energy for your lodge?

Year	Grid Electricity	Gas	Wood	Diesel	Heating oil	Solar
2010 - 2011	94.7%	1.8%	0.0%	1.8%	0.9%	0.9%
2011 - 2012	93.0%	3.5%	0.0%	0.9%	2.6%	0.0%
2012 - 2013	92.5%	5.0%	0.0%	0.8%	0.8%	0.8%
2013 - 2014	89.8%	6.8%	0.8%	0.8%	0.8%	0.8%
2014 - 2015	87.9%	7.8%	0.9%	1.7%	0.9%	0.9%
2015 - 2016	88.0%	9.4%	0.0%	0.9%	0.9%	0.9%

What is the main source of heating for your lodge? (If you answer open fireplace, please ensure your answers in the 'Air Quality' section are consistent)

Year	Open Fireplace	Combustion Wood	Gas Space	Gas Hydronic	Electric Space	Electric Underfloor	Electric Hydronic	Oil	Diesel	Other
2010 - 2011	6.1%	3.5%	18.4%	6.1%	34.2%	6.1%	3.5%	13.2%	6.1%	2.6%
2011 - 2012	7.9%	1.8%	18.4%	8.8%	37.7%	5.3%	1.8%	9.6%	5.3%	3.5%
2012 - 2013	7.5%	0.8%	20.8%	10.8%	34.2%	6.7%	3.3%	8.3%	6.7%	0.8%
2013 - 2014	4.2%	2.5%	18.6%	12.7%	38.1%	5.1%	5.9%	5.9%	5.9%	0.8%
2014 - 2015	1.7%	3.5%	19.1%	14.8%	39.1%	5.2%	6.1%	6.1%	3.5%	0.9%
2015 - 2016	0.9%	3.4%	20.7%	15.5%	37.1%	5.2%	6.0%	6.0%	4.3%	0.9%



Does your heating have thermostat settings?

Year	Yes	No
2010 - 2011	95.6%	4.4%
2011 - 2012	92.1%	7.9%
2012 - 2013	92.5%	7.5%
2013 - 2014	93.2%	6.8%
2014 - 2015	95.7%	4.3%
2015 - 2016	95.7%	4.3%

Do you have any timer systems and/or sensor switches for lighting and heating your lodge?

Year	Yes	No
2010 - 2011	80.7%	19.3%
2011 - 2012	78.1%	21.9%
2012 - 2013	85.0%	15.0%
2013 - 2014	85.6%	14.4%
2014 - 2015	89.6%	10.4%
2015 - 2016	89.7%	10.3%

Do you use off-peak hot water or instantaneous gas hot water?

Year	Yes	No
2010 - 2011	77.2%	22.8%
2011 - 2012	74.6%	25.4%
2012 - 2013	71.7%	28.3%
2013 - 2014	77.1%	22.9%
2014 - 2015	76.5%	23.5%
2015 - 2016	75.9%	24.1%

Are more than 75% of your light bulbs fluorescent, LED, or high efficiency/long life light bulbs?

Year	Yes	No
2012 - 2013	86.7%	13.3%
2013 - 2014	85.6%	14.4%
2014 - 2015	86.1%	13.9%
2015 - 2016	92.2%	7.8%

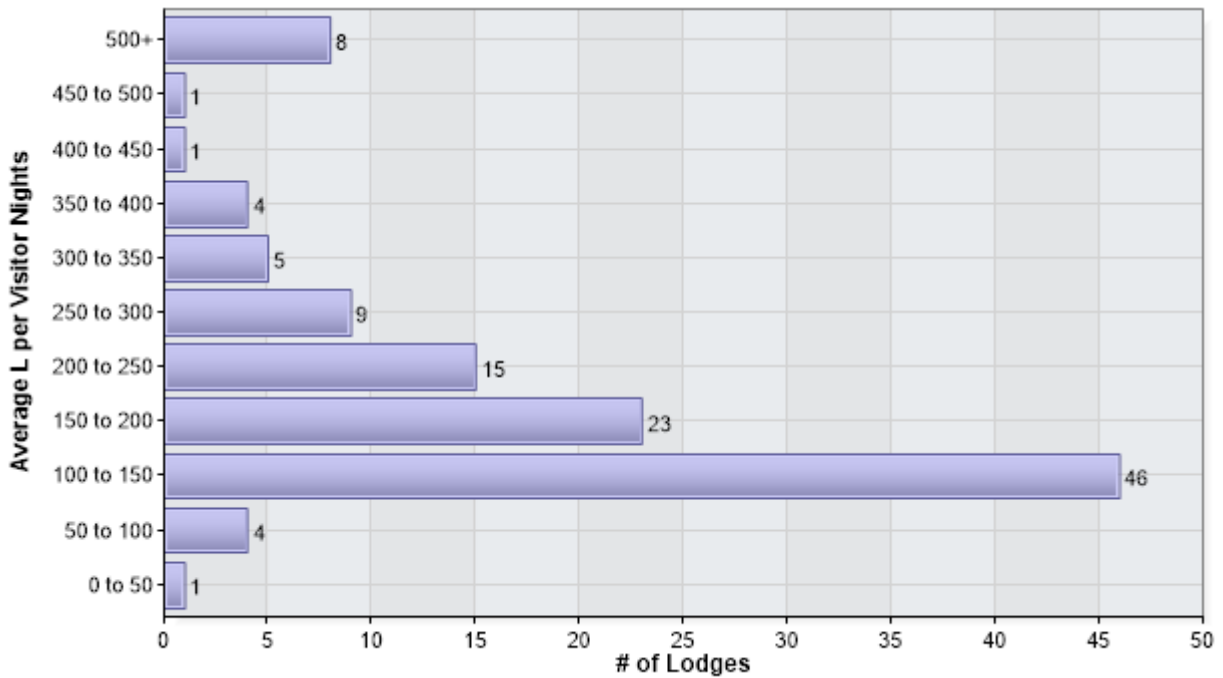
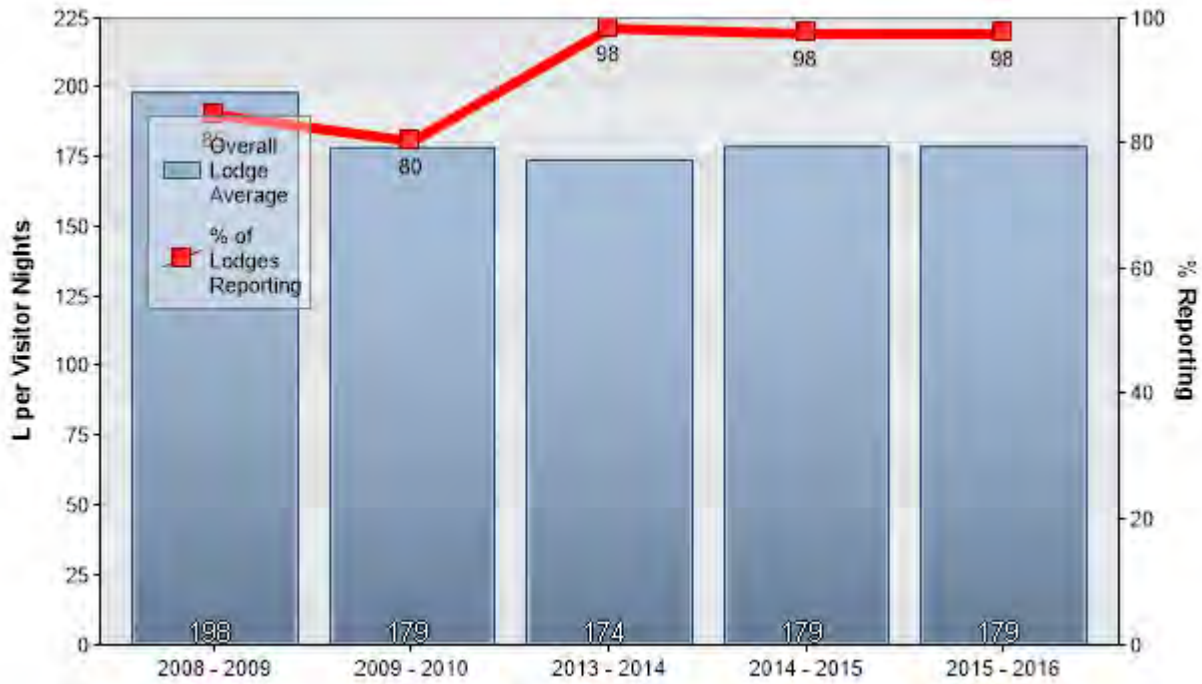
Do you provide signs or other measures to encourage guests, visitors and staff to minimise energy use? Please provide details of any significant initiatives in comments

Year	Yes	No	Planning To
2012 - 2013	75.8%	14.2%	10.0%
2013 - 2014	78.8%	13.6%	7.6%
2014 - 2015	82.8%	10.3%	6.9%
2015 - 2016	84.5%	8.6%	6.9%

## Water

### Targets

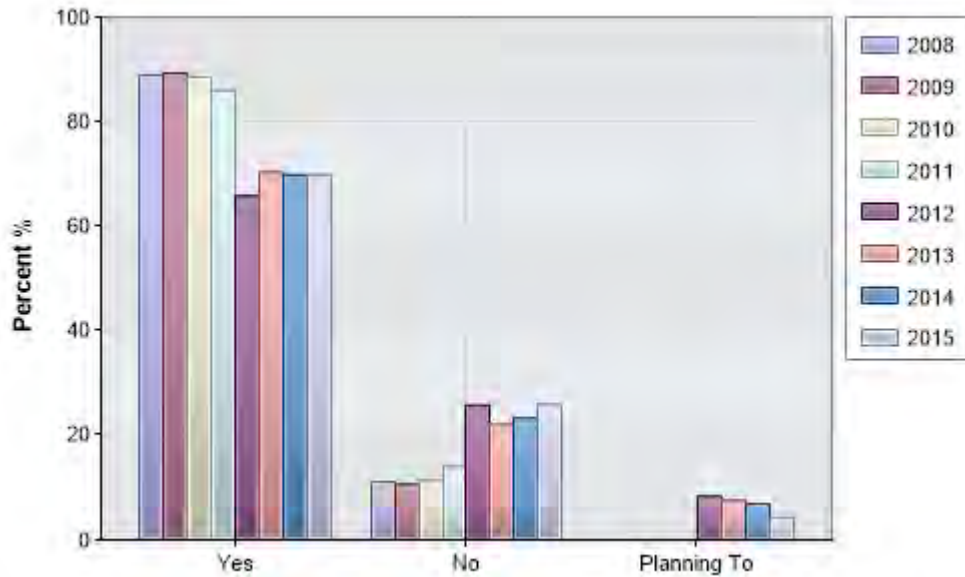
Target 21: Less than 200L of water used per visitor night. ★



Year	Total
2013 - 2014	174.0
2014 - 2015	178.8
2015 - 2016	178.9

Target 22: More than 90% of lodges implementing water saving measures. ✖

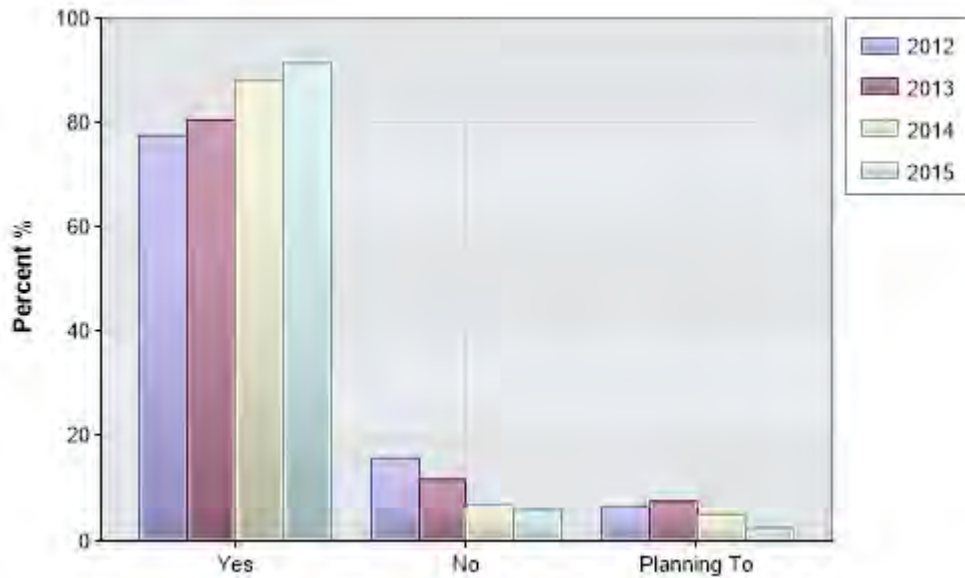
Has your lodge implemented any water saving measures? Please add a comment to provide details of any significant initiatives.



Year	Yes	No	Planning To
2010 - 2011	88.6%	11.4%	0.0%
2011 - 2012	86.0%	14.0%	0.0%
2012 - 2013	65.8%	25.8%	8.3%
2013 - 2014	70.3%	22.0%	7.6%
2014 - 2015	69.8%	23.3%	6.9%
2015 - 2016	69.8%	25.9%	4.3%

Target 23: 100% of lodges regularly inspecting their lease for erosion problems ✖

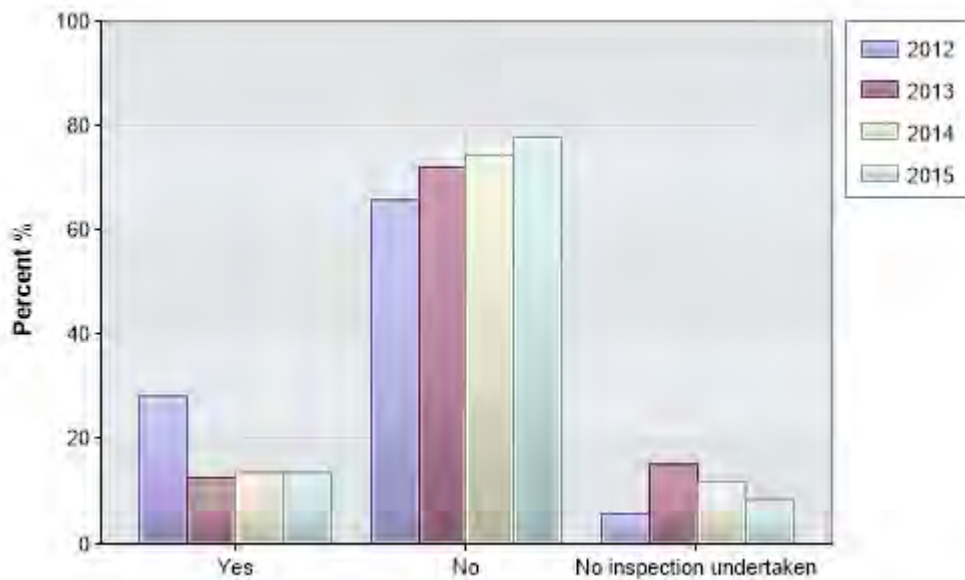
Did you conduct an inspection of your lease area for erosion in the last 12 months?



Year	Yes	No	Planning To
2012 - 2013	77.5%	15.8%	6.7%
2013 - 2014	80.5%	11.9%	7.6%
2014 - 2015	88.0%	6.8%	5.1%
2015 - 2016	91.5%	6.0%	2.6%

Target 24: 100% of lodges with erosion issues taking actions to prevent and manage the erosion. ✖

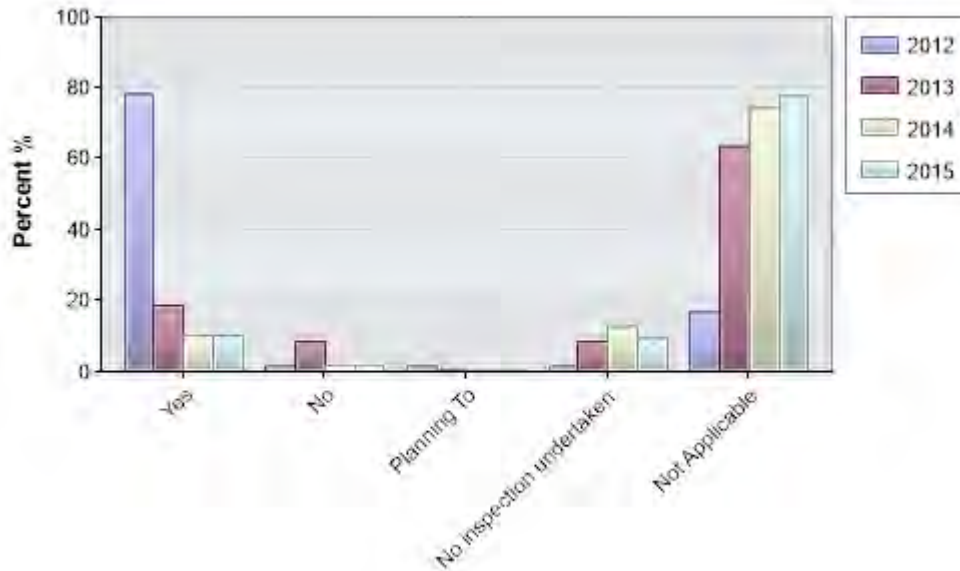
If yes, did your inspection identify erosion problems?





Year	Yes	No	No inspection undertaken
2012 - 2013	28.3%	65.8%	5.8%
2013 - 2014	12.7%	72.0%	15.3%
2014 - 2015	13.7%	74.4%	12.0%
2015 - 2016	13.7%	77.8%	8.5%

If yes, did you take a specific action to reduce erosion from your lease area in the last 12 months? If you did or are planning to, please add a comment to provide details.



Year	Yes	No	Planning To	No inspection undertaken	Not Applicable
2012 - 2013	78.3%	1.7%	1.7%	1.7%	16.7%
2013 - 2014	18.6%	8.5%	0.8%	8.5%	63.6%
2014 - 2015	10.3%	1.7%	0.9%	12.8%	74.4%
2015 - 2016	10.3%	1.7%	0.9%	9.4%	77.8%

## Achieving the Objectives

Did you conduct a water audit within the last 12 months?

Year	Yes	No
2010 - 2011	43.9%	56.1%
2011 - 2012	48.2%	51.8%
2012 - 2013	40.0%	60.0%
2013 - 2014	45.8%	54.2%
2014 - 2015	45.2%	54.8%
2015 - 2016	46.1%	53.9%

Do you provide signs or other measures to encourage guests, visitors and staff to minimise water use? Please add a comment to provide details of any significant initiatives.

Year	Yes	No	Planning To
2010 - 2011	86.8%	13.2%	0.0%
2011 - 2012	85.1%	14.9%	0.0%
2012 - 2013	82.5%	10.0%	7.5%
2013 - 2014	77.1%	14.4%	8.5%
2014 - 2015	80.2%	14.7%	5.2%
2015 - 2016	80.9%	14.8%	4.3%

What % of your taps are spring loaded (turn off automatically)?

Year	0	1-24	25-49	50-74	75-99	100	Don't Know
2010 - 2011	95.6%	1.8%	0.9%	0.0%	0.9%	0.0%	0.9%
2011 - 2012	96.5%	0.0%	0.9%	0.9%	0.0%	0.9%	0.9%
2012 - 2013	94.2%	0.8%	0.8%	0.8%	0.0%	1.7%	1.7%
2013 - 2014	88.1%	6.8%	0.8%	0.8%	0.0%	1.7%	1.7%
2014 - 2015	87.8%	7.0%	0.9%	0.9%	0.0%	2.6%	0.9%
2015 - 2016	88.8%	6.0%	1.7%	0.0%	0.9%	2.6%	0.0%

What % of your installed showerheads are water efficient?

Year	0	1-24	25-49	50-74	75-99	100	Don't Know
2010 - 2011	14.0%	9.6%	4.4%	3.5%	7.0%	58.8%	2.6%
2011 - 2012	16.7%	7.0%	0.9%	5.3%	9.6%	56.1%	4.4%
2012 - 2013	17.5%	7.5%	0.8%	3.3%	8.3%	58.3%	4.2%
2013 - 2014	15.3%	11.0%	1.7%	5.1%	9.3%	55.1%	2.5%
2014 - 2015	13.0%	7.0%	1.7%	6.1%	10.4%	60.0%	1.7%
2015 - 2016	9.5%	7.8%	3.4%	5.2%	11.2%	60.3%	2.6%

What % of your basins & sinks have tap aerators fitted?

Year	0	1-24	25-49	50-74	75-99	100	Don't Know
2010 - 2011	21.9%	11.4%	4.4%	7.9%	9.6%	39.5%	5.3%
2011 - 2012	28.1%	12.3%	3.5%	4.4%	7.9%	37.7%	6.1%
2012 - 2013	24.2%	8.3%	2.5%	10.8%	11.7%	36.7%	5.8%
2013 - 2014	24.6%	11.0%	5.1%	8.5%	10.2%	35.6%	5.1%
2014 - 2015	22.6%	9.6%	4.3%	10.4%	13.0%	35.7%	4.3%
2015 - 2016	19.8%	9.5%	6.0%	10.3%	12.9%	37.1%	4.3%

What % of your toilets are dual flush?

Year	0	1-24	25-49	50-74	75-99	100	Don't Know
2010 - 2011	18.4%	7.9%	8.8%	8.8%	10.5%	44.7%	0.9%
2011 - 2012	19.3%	8.8%	2.6%	7.0%	14.9%	45.6%	1.8%
2012 - 2013	15.0%	10.0%	3.3%	6.7%	13.3%	49.2%	2.5%
2013 - 2014	12.7%	6.8%	4.2%	5.9%	17.8%	51.7%	0.8%
2014 - 2015	9.6%	7.0%	6.1%	6.1%	17.4%	53.0%	0.9%
2015 - 2016	8.6%	6.0%	5.2%	6.9%	19.0%	53.4%	0.9%

Do you collect rainwater or snowmelt for reuse?

Year	Yes	No	Planning to
2010 - 2011	5.3%	92.1%	2.6%
2011 - 2012	2.6%	96.5%	0.9%
2012 - 2013	4.2%	94.2%	1.7%
2013 - 2014	2.5%	97.5%	0.0%
2014 - 2015	0.9%	99.1%	0.0%
2015 - 2016	1.7%	98.3%	0.0%

If you measure how much rainwater/snowmelt was collected, type in the amount (in kL)

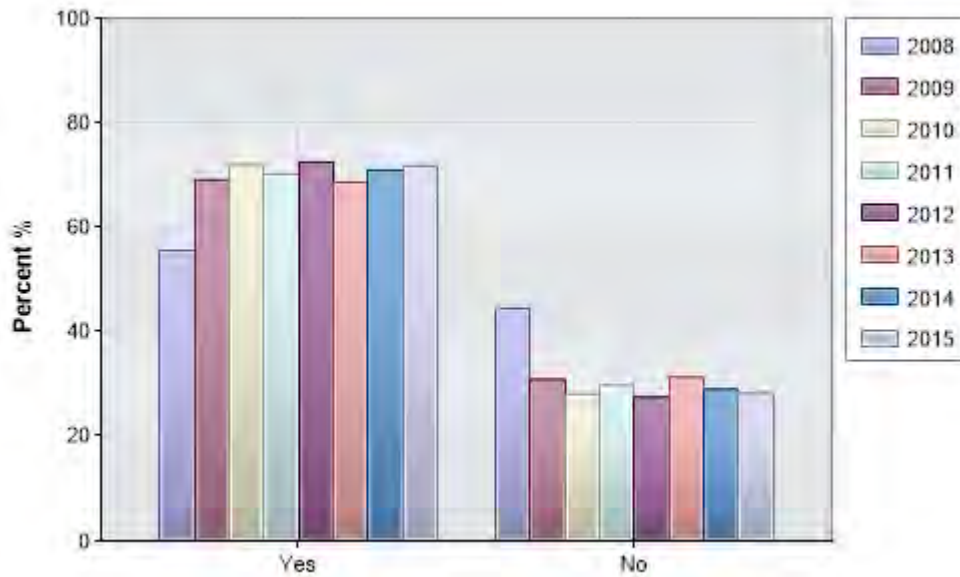
Year	Total
2010 - 2011	925
2011 - 2012	1456
2012 - 2013	0
2013 - 2014	0
2014 - 2015	0
2015 - 2016	0

## Cultural Heritage and Amenity

### Targets

Target 25: 75% of lodges educating guests and staff about PRR cultural heritage values. ✖

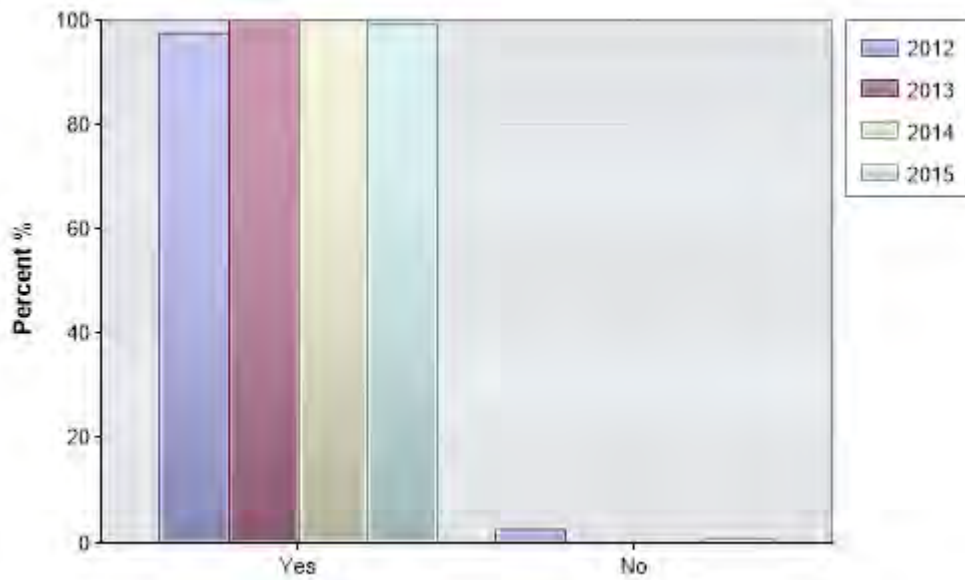
Have you educated staff, guests & visitors about the cultural heritage values of the Perisher Range Resorts?



Year	Yes	No
2010 - 2011	71.9%	28.1%
2011 - 2012	70.2%	29.8%
2012 - 2013	72.5%	27.5%
2013 - 2014	68.6%	31.4%
2014 - 2015	70.9%	29.1%
2015 - 2016	71.8%	28.2%

Target 26: 100% lodges have lease areas free from excess building materials, equipment, garbage, weeds and other items that negatively affect scenic value. ✖

Is your lease neatly landscaped and free from excess building materials, equipment, garbage, signs, or any other items that negatively affect scenic value?



Year	Yes	No
2012 - 2013	97.5%	2.5%
2013 - 2014	100.0%	0.0%
2014 - 2015	100.0%	0.0%
2015 - 2016	99.1%	0.9%

## Achieving the Objectives

Have you obtained information on the heritage values of your lodge?

Year	Yes	No
2010 - 2011	71.1%	28.9%
2011 - 2012	75.4%	24.6%
2012 - 2013	73.3%	26.7%
2013 - 2014	72.9%	27.1%
2014 - 2015	73.5%	26.5%
2015 - 2016	76.9%	23.1%

Have you educated staff, guests & visitors about the heritage values of your lodge?

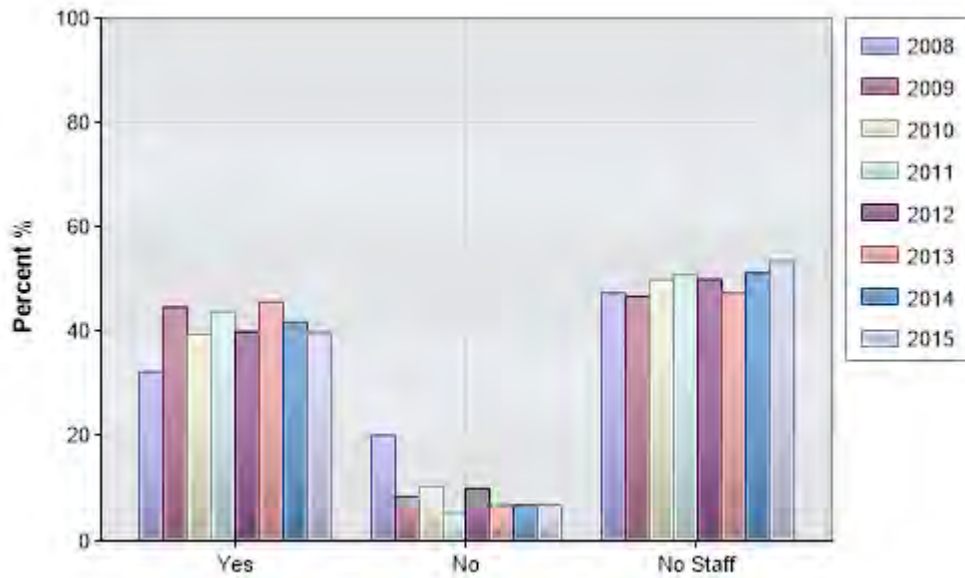
Year	Yes	No	No Heritage Values
2010 - 2011	63.2%	20.2%	16.7%
2011 - 2012	64.0%	18.4%	17.5%
2012 - 2013	65.0%	15.8%	19.2%
2013 - 2014	66.9%	18.6%	14.4%
2014 - 2015	68.4%	17.1%	14.5%
2015 - 2016	70.1%	16.2%	13.7%

## Sustainable Tourism

### Targets

Target 27: 100% of staff EMS awareness trained. ✖

Were all of your staff provided with environmental training?



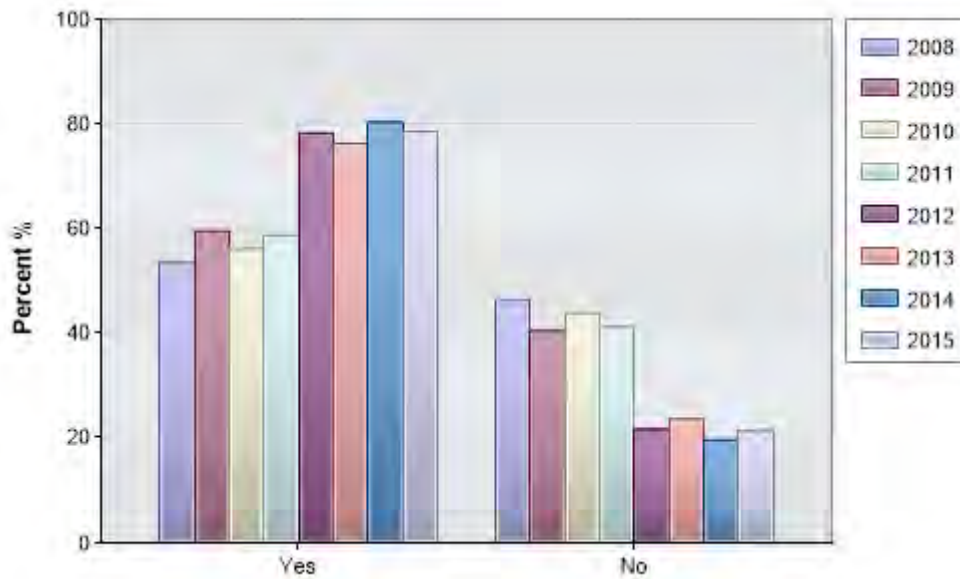
Year	Yes	No	No Staff
2010 - 2011	39.5%	10.5%	50.0%
2011 - 2012	43.9%	5.3%	50.9%
2012 - 2013	40.0%	10.0%	50.0%
2013 - 2014	45.8%	6.8%	47.5%
2014 - 2015	41.9%	6.8%	51.3%
2015 - 2016	39.7%	6.9%	53.4%

**Target 28: 100% of organisations with fully implemented EMS's for their operations** within Perisher Range Resorts. ✖

Year	Percentage of Lodges Reporting
2008 - 2009	84.6%
2009 - 2010	80.3%
2010 - 2011	95.0%
2011 - 2012	95.0%
2012 - 2013	100.0%
2013 - 2014	98.3%
2014 - 2015	97.5%
2015 - 2016	97.5%

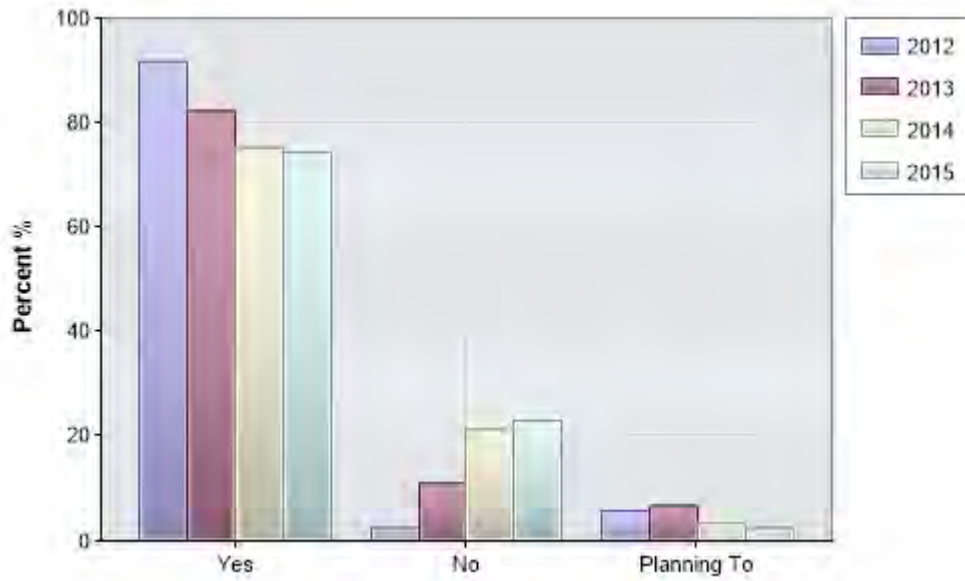
**Target 29: 100% of lodge committees annually review and discuss their environmental risks.** ✖

Did you undertake a review of the environmental risks from your lodge's operations?



Year	Yes	No
2010 - 2011	56.1%	43.9%
2011 - 2012	58.8%	41.2%
2012 - 2013	78.3%	21.7%
2013 - 2014	76.3%	23.7%
2014 - 2015	80.3%	19.7%
2015 - 2016	78.6%	21.4%

Does your lodge committee/board members discuss these risks annually?



Year	Yes	No	Planning To
2012 - 2013	91.7%	2.5%	5.8%
2013 - 2014	82.2%	11.0%	6.8%
2014 - 2015	75.2%	21.4%	3.4%
2015 - 2016	74.4%	23.1%	2.6%

## Achieving the Objectives

Are you open in summer?

Year	Yes	No
2010 - 2011	67.5%	32.5%
2011 - 2012	64.9%	35.1%
2012 - 2013	65.0%	35.0%
2013 - 2014	66.1%	33.9%
2014 - 2015	65.0%	35.0%
2015 - 2016	64.7%	35.3%



Did you undertake a lodge education and awareness program for your guests, visitors and staff which covers all issues (EMS requirements) addressed in the PRREMS Lodge Environment Manual?

Year	Yes	No
2010 - 2011	51.8%	48.2%
2011 - 2012	50.0%	50.0%
2012 - 2013	60.8%	39.2%
2013 - 2014	60.2%	39.8%
2014 - 2015	59.8%	40.2%
2015 - 2016	61.2%	38.8%

Have you maintained the records required by the Lodge Environment Manual?

Year	Yes	No
2010 - 2011	84.2%	15.8%
2011 - 2012	88.6%	11.4%
2012 - 2013	86.7%	13.3%
2013 - 2014	89.0%	11.0%
2014 - 2015	88.9%	11.1%
2015 - 2016	89.7%	10.3%

Did you communicate to your staff, members and guests about your lodge's environmental performance?

Year	Yes	No
2010 - 2011	77.2%	22.8%
2011 - 2012	84.2%	15.8%
2012 - 2013	76.7%	23.3%
2013 - 2014	78.8%	21.2%
2014 - 2015	81.2%	18.8%
2015 - 2016	82.8%	17.2%

Did you undertake a lodge education and awareness program for your staff and/or members and their guests which covered all of the issues (EMS requirements) addressed in the PRREMS Lodge Environment Manual?

Year	Yes	No
2010 - 2011	64.0%	36.0%
2011 - 2012	67.5%	32.5%
2012 - 2013	60.8%	39.2%
2013 - 2014	58.5%	41.5%
2014 - 2015	58.1%	41.9%
2015 - 2016	61.2%	38.8%

Did you maintain records of staff training?

Year	Yes	No	No Staff
2010 - 2011	30.7%	17.5%	51.8%
2011 - 2012	32.5%	15.8%	51.8%
2012 - 2013	32.5%	18.3%	49.2%
2013 - 2014	26.3%	27.1%	46.6%
2014 - 2015	21.4%	28.2%	50.4%
2015 - 2016	21.6%	25.9%	52.6%

Did you display the PRREMS Environmental Policy in your lodge?

Year	Yes	No
2010 - 2011	93.9%	6.1%
2011 - 2012	97.4%	2.6%
2012 - 2013	93.3%	6.7%
2013 - 2014	91.5%	8.5%
2014 - 2015	93.2%	6.8%
2015 - 2016	94.0%	6.0%

Is your lodge meeting the PRREMS targets?

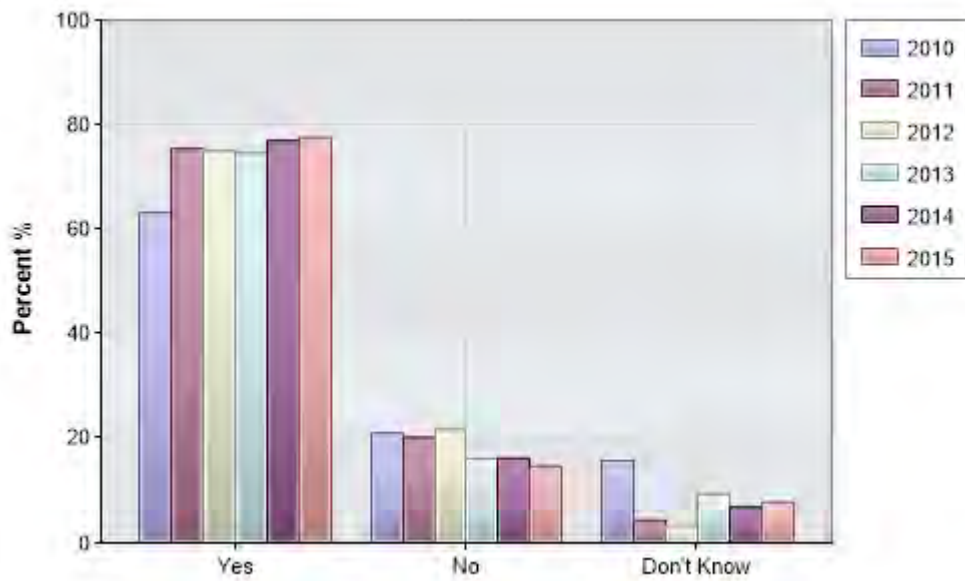
Year	Yes	No	Don't Know
2010 - 2011	53.5%	10.5%	36.0%
2011 - 2012	63.2%	7.9%	28.9%
2012 - 2013	60.8%	9.2%	30.0%
2013 - 2014	62.7%	10.2%	27.1%
2014 - 2015	66.7%	7.7%	25.6%
2015 - 2016	65.5%	6.9%	27.6%

Has your lodge improved it's performance against the targets since last year?

Year	Yes	No	Don't Know
2010 - 2011	43.9%	12.3%	43.9%
2011 - 2012	55.3%	8.8%	36.0%
2012 - 2013	57.5%	6.7%	35.8%
2013 - 2014	53.4%	6.8%	39.8%
2014 - 2015	49.6%	6.0%	44.4%
2015 - 2016	44.8%	7.8%	47.4%

Does your lodge committee/board owners discuss the lodge's environmental performance against the PRREMS targets?

Year	Yes	No	Don't Know
2010 - 2011	63.2%	21.1%	15.8%
2011 - 2012	75.4%	20.2%	4.4%
2012 - 2013	75.0%	21.7%	3.3%
2013 - 2014	74.6%	16.1%	9.3%
2014 - 2015	76.9%	16.2%	6.8%
2015 - 2016	77.6%	14.7%	7.8%



## ADDITIONAL INFORMATION

### Flora

Have you undertaken any weed control around your lodge in the last 12 months? If you undertook weed control work, please add a comment to provide details.

Lodge Name	Comment
Alpenhof Lodge	Weeding the drive way area. Installing erosion control matting at rear of lodge
Blue Cow Ski Club	Grass cutting, clearing and hand weeding around the 4 or 5 juvenile snow gums is done annually to enhance their growth. In addition we have maintained (ie. secured) the tree protectors around them. Several hours clearing weeds from young snow gums and checking the grounds for noxious weeds like thistles.
Boonoona Lodge	Grass and weed control on hard stand areas
Lampada Ski Club	Hand pulling of weeds around lodge, though quantity much reduced on previous years
Snowline Ski Centre	I weed my lawn
Matterhorn	Minor weed control by removal
South Perisher Alpine Club	We have begun cutting grass to try to keep exotic grasses better controlled. The dominant grass is the exotic perennial Cocksfoot.
Sundeck Hotel	One spraying on driveway areas and concrete pathways only.
Mirrabooka Ski Lodge	Regular weed control as part of working bees
Moerlina Lodge	We have done mowing and whipper snipping.
Mulubinba Lodge	Weeds poisoned by NPWS & Lodge with approval from NPWS. Cutting of grass & lopping heads of Cocksfoot to prevent germination.
Oldina Ski Club	All growth trimmed to prevent the spread of further seeding
Redwood Ski Club	Removed weeds in immediate vicinity of lodge, using alps invaders ID book as a guide
Orana Ski Club	We cut the grass and hand removed a lot of weeds at our summer work party
The Lodge	Continue to mow around the lodge to keep weeds at bay as well as some spraying.
Royal Coachman	We have only slashed the long grass around the Lodge for fire hazard reduction purposes
The Stables	minor weed removal
Warrugang Ski Club	Summer slashing before seed set
Wild Spitze Ski Club	Poisoning after discussion with parks representative
Yeti Ski Club	Spot sprayed pathways to the lodge with NPWS approved herbicide. Used a brush cutter to cut back & prevent the spread of cox foot grasses.
Corroboree Lodge	We used Roundup to control weeds next to the building and in the car park.
Doorack Lodge	This summer club work parties cleared weeds from around the lodge using the Alps Invaders ID Handbook as a guide. Because extensive repair work on the front deck was being undertaken this summer we did not plant more natives (as we did the previous year) and have not developed the proposed rehabilitation an.
Edelweiss Ski Club	No Weeds identified
Eremo Lodge	Slashing around the lodge cocksfoot weed, used Round Up in paved areas and removed by hand where it was possible.
Geebung Ski Club	We remove any obvious weeds.
Gunuma Ski Club	We did some weed removal around the new plants
Guthega Alpine Hotel	Slashing, mowing, hand removal
Highway Alpine Club	Weeds around the lodge were sprayed but not able to positively identify the species.
Illoura Lodge	Manual weed removal only
Kahane Lodge	Glyphosate weed killer used around lodge perimeter and car park to reduce weeds
Kandahar Ski Club	Whipper snipped weeds in preparation of reinstalling tree guards for 70 native plants on "vegetation island" between Kandahar and Cronulla lodges. Whipper snipped around lodges - March 2016 working bee. .
Eiger Chalet	NPWS have sprayed around our lodge
Illawong Ski Tourers	Weed control done with National Parks at Easter Working party
Smiggins Hotel	Weed control around Smiggins Hotel
Nordic Shelter	Manual removal of weeds around plantings.
Turnak Ski Club	Cut long grass before building works commenced in Oct/Nov 2015.
Cowra Ski Club Co-operative Limited	All year round manager does weed control
Jagungal Lodge - A.C.T.P Ski Club - ACT Police Ski Club Incorporated	Lease inspection and minor weed control undertaken regularly as part of work parties using Local Government trained Bush Regeneration volunteer
Rock Creek Ski Club Co-operative Limited	Weeds removed from verandah area
The RAN Ski Club - R.A.N Ski Club	Repeated spraying - regressing with Chewing Fescue due to inadequate revegetation by parks contractor when new water main laid
Trissana Ski Lodge Co-operative Limited	Weeds removed around base of supports and to aid access to services.

Waratah Ski Club Limited	Cox foot and timothy grass. Spot sprayed around property. Glyphosate used on advice from David from NPWS
Snowgums Alpine Club Co-operative Limited	Selective weeding of exotics at rear of lodge
Canberra Alpine Club Incorporated	Weed control is done with working bees approximately 5 times per year
Fjellheim Ski Lodge Co-op Limited	Member family weeded around lodge in February
Sonnenhof Chalet - Haldell Pty Limited	We mow the landscaped areas around the Chalet on a regular basis all summer, this must help with weed control.
Langlauf Ski Club Co-operative Society Limited	We have removed a non-native plant from our site
Munionsg Ski Club Co-op Limited	Weed removal around the base of the lodge.
Peer Gynt Lodge	Hand pulled some yarrow within lodge surrounds
Rugby Ski Club Limited	Difficult to see if there has been decrease in the number of weeds
Tarrowonga Alpine Club Co-op Limited	Annual work party to whipper sniper grass and remove weeds
Apex Chalet - Apex Foundation	Whipper snipping around the lodge. Cut down St John's Wort & thistles.

Have you cleared any vegetation around your lodge in the last 12 months? If yes, did you have development consent from Dept of Planning or approval from NPWS? If you did not have consent, please add a comment and provide details.

Lodge Name	Comment
Clancy Alpine Club	Cutting of long grass around the lodge was undertaken as a requirement of the lease.
Kunapipi Ski Club	We undertook slashing of grass around the lodge
Kyilla Lodge	We have undertaken a program to remove dead snow gums from around the lodge in consultation with Dave Woods of NPWS.
Maranatha Lodge	Work is in discussion/conjunction with the NPWS.
Matterhorn	Mowing long grass
Moerlina Lodge	We have cleared some branches that were close to the lodge and rubbed against the lodge in the wind. David Woods came and checked it first and said it was OK. This is over last couple of years. We have saved cut timber to use in the fire. Pest inspector has told us to use this first as it encourages termites because we have stored it outside around the outside walls.
Orana Ski Club	We only cut the grass and removed some weeds on our lease area
Tiobunga Lodge - Brindabella Ski Club	We have undertaken a program to remove dead snow gums from around the lodge in consultation with Dave Woods of NPWS.
Edelweiss Ski Club	Slashed alpine grasses as required by NPWS
Highway Alpine Club	Cutting of long grass only
Nordic Shelter	Vegetation cleared on ski trails during work parties supervised by NPWS
Caloola Ski Club	Mowed grass around lodge as a requirement, no Planning approval required for this.
Kosciusko Snow Revellers Club Limited	The only vegetation we manage is the annual mowing of the exotic grasses close to the lodge, say about 3 to 5m off the lodge building. We stay clear of any alpine button grass within this zone
Canberra Alpine Club Incorporated	Proceeding with previously authorized weed removal
Langlauf Ski Club Co-operative Society Limited	We have mowed the access track to the front door and car parking area

## Fauna

Have you had an issue with pests (rabbits, foxes, starlings, house mice or other non-native species) in or around your lodge in the last 12 months? Please add a comment and provide details.

Lodge Name	Comment
The Lions Lair	Rabbits seen around lodge
Lampada Ski Club	Evidence of rabbits around immediate vicinity of lodge.
Maranatha Lodge	We have rabbits in the vicinity evident by their droppings and some sighting during the summer months. There is the occasional fox that is seen sunning itself on the rocks near the lodge of a summer time.
Swagman Chalet	Rabbits, deer
The Lodge	There are always rabbits about which have been trying to dig holes in the lawn. Have noticed more hares too - see next question. I consider this minor though.
Wild Spitze Ski Club	Rabbit population better last year but getting worse again this year
Yeti Ski Club	Rabbit numbers are increasing
Edelweiss Ski Club	No issue with pests.
Geebung Ski Club	We do not really have any issues as such but it might be worth noting that over the last 2 years we have been sighting some deer - which is new.
Gunuma Ski Club	Rabbits still seem to be a problem around the lodge area and getting in under the lodge and they and other rodents seem to be eating electrical cabling under the lodge
Guthega Alpine Hotel	Rabbits undermining bank
Highway Alpine Club	Not aware of any pests.
Illawarra Alpine Club	Our manager believed he saw a rat not thought to be native in the kitchen pantry
Kahane Lodge	Antechinus caught in Elliot traps Rats baited by contractor, one carcass found
Kandahar Ski Club	Rabbits have become a major issue and have burrowed under the lodge. We are discussing options of eradicating these rabbits with NPWS. Mice are now under control with assistance from NPWS.
Eiger Chalet	Rabbits are burrowing all around our lodge in the summer/Autumn months and we have noticed they have been rapidly breeding... :-)
Nordic Shelter	Rabbits and hares have caused damage to plantings around the Nordic Shelter. Plantings protected with tree guards.
Turnak Ski Club	Seem to have an increase in snake sightings - possible alpine copperhead and brown.
Valhalla Lodge	Lots of rabbits, lots of rabbit holes. Saw 1 cat during the winter season. Reported.
Canberra Alpine Club Incorporated	Noticed and increase in the rabbit population
Sonnenhof Chalet - Haldell Pty Limited	Rabbits seem to be on the increase.
Dulmison Ski Club Limited	Minor track evidence of rabbits only
Apex Chalet -	Minor issue with house mice plague for about a fortnight.

Does your lodge use or have any baits, snares, traps or rat poison on its premises? If yes, do you have NPWS approval for this pest control? Please add a comment and provide details.

Lodge Name	Comment
Alexandra Ski Club	Approval from Dave Woods
Clancy Alpine Club	We have an Elliot Trap as provided by NPWS.
Boonoona Lodge	Elliott traps
Ku-ring-gai Alpine Lodge	We use Elliott traps - both our own, and NPWS-supplied.
Moerlina Lodge	Since last year we have had much less mice dirt in the pantry and we found one dead mouse behind the stove.
Mulubinba Lodge	Only Elliot traps are used.
Munjarra Ski Club	Rat sac placed in foundations. Discussed with Karen Field
Redwood Ski Club	We use the NPWS-supplied Elliot trap
The Lodge	Please note I use the Pest Free device. It is a plug-in device which deters all small creatures with an electromagnetic pulse. Continues to work well.
Wild Spitze Ski Club	Parks provided Elliott Traps
Corroboree Lodge	We use the Elliot Trap supplied by NPWS
Yeti Ski Club	We use an Elliot trap supplied by NPWS. Three Small mammals have been trapped and removed from the lodge in 2015.
Eremo Lodge	Elliott Trap only
Geebung Ski Club	We use the NPWS provided Elliott Traps which we infer is an approved pest control method.
Highway Alpine Club	Elliott trap supplied by NPWS

Kahane Lodge	We have 2 Elliot traps - I assume these traps were procured through NPWS some years ago. This year we also used a pest contractor who sort NPWS permission to bait and trap rats that were causing damage inside the lodge
Kandahar Ski Club	NPWS and Kandahar have been eradicating house mice for 3 years with NPWS baits with great success. Some baits are still in place to keep mice at a zero level. Although many lodges in Perisher Valley had a mice infestation over 2014 - 2015 summer, Kandahar had no evidence of mice.
Eiger Chalet	We use the NPWS Elliot Traps where and when appropriate
Perisher Manor Hotel	KNPS have provided Elliot traps.
Fjellheim Ski Lodge	We have an Elliot Trap on site provided by NPWS
Peer Gynt Lodge	NPWS provided Elliot traps to catch rodents within the lodge

## Incident Management

How many pollution incidents has your lodge had in the last 12 months? If you had an incident(s), please provide details in comments

Lodge Name	Comment
Barrakee Ski Lodge	All appropriately dealt with immediately
Yeti Ski Club	No incidents.

## Water Conservation

Has your lodge implemented any water saving measures? Please add a comment to provide details of any significant initiatives.

Lodge Name	Comment
Aurora Ski Club	Upgrading 2 bathrooms a year with water saving devices.
Australian Ski Club	Progressive installation of WSMs over the years but none this year. Plans in place to refurbish the original bathrooms over the next few years and additional WSMs will be implemented then
Avalanche Alpine Club	Not this year. Water pressure control was fitted to the water main in a previous year
Blue Cow Ski Club	Water saving shower heads and aerated taps fitted throughout.
Kunapipi Ski Club	2 x Toilet Cisterns installed with dual flush in lieu of single flush mechanisms.
Maranatha Lodge	Installed water saving shower heads. Installed water saving taps. Provided signage in Shower areas.
Matterhorn	Continually trying to upgrade equipment to better water energy usage. Now subcontracting of the mountain for majority of laundry
South Perisher Alpine Club	Water efficient shower heads installed
Mirrabooka Ski Lodge	Nothing new this year. But in past changed shower heads, taps etc.
Sundowner Ski Club	Encourage guests to take shorter showers. Encourage all members to turn taps off properly.
Mulubinba Lodge	Dual flush toilet cisterns. Water saving shower heads.
Swagman Chalet	Towels only washed when requested bed linen only laundered at change over
Oldina Ski Club	Replaced toilet with a dual flush cistern.
Telemark Lodge	Awareness sessions, signage regarding water conservation, dual flush, flow restrictions.
Redwood Ski Club	Fixed long-standing water leak in 2010
The Lodge	As we continue to renovate over the next few years, all new taps/toilets/etc. will have water saving measures in mind. Renovations done so far have done so.
Royal Coachman	Dual flush toilets, water reducers
The Stables	Ongoing guest and staff education. Where possible and practical replace washing machines dish washers etc. with higher energy/water saving ratings
University Ski Club	None in last 12 months
Warrugang Ski Club	Dual flush toilets, water saving plumbing fittings, showers predominate over baths
Yalara Ski Club	One toilet cistern replaced in year with an updated dual flush unit.
Yeti Ski Club	In response to a burst water pipe in 2011 installed solenoid cut off valve so no water can flow unless power to lodge is switched on. In 2013 installed 3 star water efficient shower heads. In 2014 replaced 10 litre cisterns with Dual Flush 3/6 litre cisterns. In 2016 replaced 10+ year old washing machine & dryer with coin operated commercial grade equipment to conserve water and energy resources.
Edelweiss Ski Club	All members well versed over many years on importance of conserving water.
Eremo Lodge	Sticker notes provided by the NPWS are affixed in wet area/rooms highly recommending occupiers to use least possible water in the lodge.
Gunuma Ski Club	All taps are water saving taps and as they need replacing they are also up graded to the best water saving devices that we can fund. Leaks are fixed as quickly as possible when identified

Guthega Alpine Hotel	See previous reports - ongoing maintenance
Illawarra Alpine Club	Flow restrictors on outlets, and dual flush toilets
Kahane Lodge	Water saving measures were implemented years ago nothing new this year.
Eiger Chalet	Installation of dual toilet flushing systems
Illawong Ski Tourers	We have a water system from creek water.
Snow Country Ski Club	Shower heads replaced in 2013
The Australian Golf Club Ski Lodge	All tapes and shower heads are water controlled. Bathrooms have been upgraded
Caloola Ski Club	Water saving shower head - see below answer to question.
Jagungal Lodge - A.C.T.P Ski Club - ACT Police Ski Club Incorporated	Water savings showerheads installed
Kosciusko Snow Revellers Club Limited	All water devices such as taps and showers are high efficiency low dispensing type
Tate Ski Club Co-op Limited	Decommissioned filtered water tap and automated boiling water machine. This was to reduce water wasted through this equipment
The RAN Ski Club - R.A.N Ski Club	Original building taps etc. are all water saving, we cannot keep reporting the same things
Trissana Ski Lodge Co-operative Limited	Fixed up leaking toilet, new shower heads were water saving.
Snowy Gums Pty Limited	Small flush Toilets installed in 12 rooms
Fjellheim Ski Lodge Co-op Limited	Not this year. Bathroom upgrade was completed two seasons ago.
Mawabu Ski Club - Manly-Waringah Master Builders Union	Conserve water stickers in rooms. as previously advised restrictors fitted with new plumbing
Munionsg Ski Club Co-op Limited	Removal of hot water storage tanks and replaced with instant gas hot water system.
Rugby Ski Club Limited	As we replace devices we look to use water saving devices.
Apex Chalet - Apex Foundation	Toilet numbers have increased but all handicap friendly and modern dual flush. All showers handicap friendly and water efficient heads.

Do you provide signs or other measures to encourage guests, visitors and staff to minimise water use? Please add a comment to provide details of any significant initiatives.

Lodge Name	Comment
Swagman Chalet	Sign in rooms re washing of towels
Mulubinba Lodge	Each week during occupancy the Lodge Captain for the week includes water saving measures in the briefing at commencement of week.
Moerlina Lodge	Lodge captain instructions encourage short showers.
South Perisher Alpine Club	New signs in place
Maranatha Lodge	In shower areas, signage has been provided to encourage better water usage.
Kunapipi Ski Club	Closure procedures identify turning off all systems including hot water. Notices installed around the lodge to reduce consumption.
Blue Cow Ski Club	Mentioned in Lodge Use Instructions
Avalanche Alpine Club	Sticker provided by the National Parks were placed in the rooms
Aurora Ski Club	Posters and bedroom manuals
Guthega Alpine Hotel	Signs on back of toilet doors, staff training, guest compendium
Gunuma Ski Club	Signs are in all rooms and regularly addressed in our newsletters and on our website
Eremo Lodge	See above comment
Yeti Ski Club	Go slow on H <sub>2</sub> O posters and stickers displayed on lodge noticeboard.
The Stables	We advise guests to hang towels so that they do not need to be laundered. Program all dishwashers to be on short cycles.
The Lodge	The compendium in each room asks guests to be considerate of water use. Also investigating in-room signage.
Barina Milpara Lodge	In May 2015 ~ Installing tempering valves to water heaters to control temperature of hot water and reduce quantity of individually controlled cold water by guests for mixing.
Kahane Lodge	Manager asks guests to conserve water in guest briefings
Tarrowonga Alpine Club Co-op Limited	Reduce flow shower heads
Mawabu Ski Club - Manly-Waringah Master Builders Union	Stickers in rooms



## Cultural Heritage and Amenity

Have you obtained information on the heritage values of your lodge?

Lodge Name	Comment
Maranatha Lodge	<b>Social secretary has produced a book on the lodge's history.</b>
Moerlina Lodge	Due to the design and being built in the 70's our lodge has heritage qualities.
Mulubinba Lodge	A history of the Lodge is being developed on the Lodge's website from contributions from previous & current members & guests. The Lodge was built in 1973.
The Lodge	Asked the question and there are no heritage values.
Yalara Ski Club	Published in 2013 a book title '50 years of Yalara'. We also have two photographic heritage displays in two of the three communal areas of the lodge.
Doorack Lodge	We have started a process of collating archival material regarding the establishment of the ski club, the building of the lodge and the early history of the club and lodge
Gunuma Ski Club	Gunuma Lodge recently turned 40. Information was sent to members and photos of favorite times have been sourced to use to put up around the lodge.
Kandahar Ski Club	Yes and we celebrate our 60th birthday in 2014. We have a history of the building of K1 and K2 plus further history as a result of the 60th birthday including Foundation Member names on original planks mounted in both lodges & framed 60th birthday invitations.
Nordic Shelter	Historical information continues to be gathered about the Nordic Shelter and about the historic involvement of Sverre Kaaten in the establishment of Perisher and Smiggin Holes.

## Fuel Storage

Have you provided validation reports and documentation to NPWS for your decommissioned or recently (in the last 5 years) removed tanks? (Refer to UPSS regulation fact sheet on Support page). Please add a comment and provide details.

Lodge Name	Comment
Barrakee Ski Lodge	Report for removal of tanks supplied by previous owners
Snowline Ski Centre	Removed 1 tank. Validation report submitted. Unable to make adjacent box work.
Yalara Ski Club	No tanks, removed in 2011 when converted to gas heating.
Yeti Ski Club	Not applicable.
Edelweiss Ski Club	No underground tanks!
Kosciusko Snow Revellers Club Limited	The club has changed over to gas at present as a trial to see if the heating and cooking can be managed by gas tanks. No final decision has yet been made to formalize this situation and permanently seek validation before removal.

What actions have you undertaken to manage your fuel storage tanks that are no longer in use? (Please fill in each blank with the number of tanks that apply to each category, zero if you have none (Refer to UPSS regulation fact sheet on Support page). Please add a comment to provide details

Lodge Name	Comment
Ku-ring-gai Alpine Lodge	During the reporting period the one above-ground bulk tank for heating oil was removed and properly disposed under the supervision of NPWS and its successful removal has been certified.
Mulubinba Lodge	Not applicable
Oldina Ski Club	They have been removed in accordance with an approved DA
Guthega Alpine Hotel	Not applicable.
Hus-ski Lodge	Not applicable
Illawong Ski Tourers	No fuel tanks, no longer in use. LPG bottles at the lodge are in use on a rotating cycle. All empty LPG bottle are carried out and refilled at Easter in Jindabyne. These are then carried back into the lodge for the next season. Bottles are tested offsite to meet maintenance requirements.
Turnak Ski Club	Decommissioned, padlocked inlet and capped off outlet. Inspected by James Alexander as part of our Fire Order.
Rock Creek Ski Club Co-operative Limited	Nil
Ullr Ski Lodge Co-op Society Limited	We are in the process of arranging to have our unused tank decommissioned.
Peer Gynt Lodge	Investigating options for relocating tanks for re-usage off the mountain

## Waste

Do you provide signs or other measures to encourage guests, visitors and staff to minimise waste generation and/or separate recycling? Please add a comment to provide details or any significant initiatives

Lodge Name	Comment
Beachcombers Alpine Retreat	Lodge users are encouraged to recycle all packaging and containers with signs in the kitchen area.
Avalanche Alpine Club	Members are provided with separate collection bins for the different forms of recycling
Clancy Alpine Club	Food scraps bins and other recycling bins are prominent and easily accessible.
Blue Cow Ski Club	Signs in kitchen, NPWS poster, Lodge Use Instructions (for members and their guests)
Kunapiipi Ski Club	Two separate bins are provided in the kitchen for recycling and general waste.
Maranatha Lodge	Glass recycling (100%). Cardboard recycled Vegetable matter.
South Perisher Alpine Club	Updated signs installed
The Lodge	Recycling bins with signage are located in the common areas for guests. Recycling is part of staff training and procedures. For the question below, there is no program as such - we do the suggestions as par for the course.
Corroboree Lodge	We have installed recycle bins for the guests to use in our Guest Lounge.
Yeti Ski Club	A Waste Hut was built using NPWS guidelines and installed for the 2015 Winter Season. Food Organics is now collected in a 10 litre bucket in the kitchen and when full transferred to the Waste Hut. All other waste streams are sorted and bagged in a internal Waste Room. When these bags are full they are transferred to the Waste Hut.
Yalara Ski Club	Signage in kitchen area reflects waste recycling
Gunuma Ski Club	Signs are in place and on our website and in newsletters and encourage people to recycle correctly. During winter the house manager instructs guests on what goes in which bin each week when doing fire drill
Eremo Lodge	In addition to sign visitors and gests are provided with information prior to occupying the Lodge.
Illawarra Alpine Club	Recycling receptacles in kitchen and behind bar
Karralika Ski Club	All notices provided by Parks are displayed in kitchen area on fridges
Kandahar Ski Club	Posters are on walls in lounge areas pantry and kitchen areas plus in Lodge manuals.
Illawong Ski Tourers	Re-cycling and general rubbish bins are labelled
Nordic Shelter	A new colour-coded bin system has been installed to encourage separation of waste and recycling materials. Collection of organic materials implemented.
Snow Country Ski Club	Bins in kitchen are labelled with list of acceptable contents.

## Erosion Control

Did you conduct an inspection of your lease area for erosion in the last 12 months? If yes, did your inspection identify erosion problems? If yes, did you take a specific action to reduce erosion from your lease area in the last 12 months? If you did or are planning to, please add a comment to provide details.

Lodge Name	Comment
Aurora Ski Club	Access to be partly concreted in conjunction with NPWS and adjacent lodge.
Alpenhof Lodge	Erosion control matting is currently being installed at the rear of the lodge
Maranatha Lodge	Provided Straw cover, dead tree limb coverage and leaf litter cover over eroded areas to slow run off in Flora areas, see attachment.
Mirrabooka Ski Lodge	There is a problem between the road and our driveway - discussed with Dave Woods - erosion around a drain.
Moerlina Lodge	Run off from the road comes close to the lodge. We were there during heavy rainfall after Christmas. It is not a large erosion problem as there is plenty of grass around and the slope is not steep. We are more concerned with water coming into the lodge basement area.
Oldina Ski Club	We cleared a blocked storm water drain so that it functions correctly
Yeti Ski Club	No erosion identified.
Yalara Ski Club	During inspection in early April 2016 noted minor erosion at end of rear (southern end) building drain. In 2016/17 summer to address this issue.
Gunuma Ski Club	There was some erosion around the lodge due to water coming off the roof. Gravel has been placed around the lodge against the building as it was causing pooling as well against the lodge of water. The plantings that were done in past couple of years on the bank from lodge down to the car park have also assisted with erosion of the bank area.
Kahane Lodge	Earth steps to road repaired with LOSP treated timber during working bee.
Illawong Ski Tourers	Minor erosion - measures identified and implemented at annual Easter working bee.
The RAN Ski Club - R.A.N Ski Club	Re-grassed (2014/15 the eastern side of the lease with 100% Chewing Fescue. However due to road maintenance of the NPWS road (Wheatley Road) water run off now creates significant erosion in that area - therefore we request NPWS to place straw bales on the road verge to reduce this problem. Once again request NPWS to either reshape the road when next grading or provide straw bales to stop the run off.
Apex Chalet - Apex Foundation	Stormwater drains were cleared of any vegetation matter/obstructions.

## Energy

Do you provide signs or other measures to encourage guests, visitors and staff to minimise energy use? Please provide details of any significant initiatives in comments

Lodge Name	Comment
Moerlina Lodge	In our notes for the lodge captain we encourage short showers and saving electricity by turning off lights.
Mulubinba Lodge	Signs in guest rooms.
South Perisher Alpine Club	New notices installed
Kyilla Lodge	The fridge has been setup to shut down when power is turned off when lodge is vacant, this should save \$2.00 a day in electricity costs. All the old Fluro and Halogen lights have been replaced with LED ones. The two hot water heaters have been arranged so only one is used in summer or low load periods. Both are off peak with 50 litre booster elements.
Maranatha Lodge	At our AGM there is a presentation on Lodge efficiency measures and initiatives and an update from the PRREMS report.
Blue Cow Ski Club	Lodge Use Instructions for members and their guests
Clancy Alpine Club	Our managers always promote energy conservation measures to guests and members.
Alpenhof Lodge	Guests are instructed to turn off lights on leaving the common areas at night. Guests are asked not to leave heaters on.
Australian Ski Club	We are in the process of replacing our ancient boiler and installing better controls on our electrical water heaters which we anticipate will improve oil consumption and hopefully electricity consumption. High electricity use this year due to extensive use of power tools by tradespeople over summer.
Avalanche Alpine Club	The whole lodge was converted to Low energy lighting in early 2015. Active campaign to have guest and members turn off lights and appliances when not in use.
Swagman Chalet	Please turn off light stickers on all switches
Guthega Alpine Hotel	Installed sensor lighting in hallways and restaurant toilets, turn off stickers on all light switches, timers on all exterior lighting, timers on heating
Eremo Lodge	Sticker Notes provided by the NPWS are affix in all rooms encouraging occupants to minimise use of electricity at all times.
Gunuma Ski Club	All rooms ask guests to turn off lights and turn down heating when no in the room. Also information is put into the newsletters, website and face book sites. Gunuma is installing a remotely controlled hot water system. This will enable the 3 large hot water tanks to be controlled remotely to turn on and off depending on how many guests are staying at the lodge. The hot water systems normally run 24 hours but also have an off-peak. The lodge had cladding placed over the original wood cladding last year which we hope would assist with insulating properties of the lodge. It has certainly made the lodge feel warmer in winter. The roof was also insulated a couple of years ago when the roof was replaced.
Yalara Ski Club	On our lodge's web page we have a link to the PRREMS website
Yeti Ski Club	1) We have thermostatic controls and timers for electric underfloor heating in bedrooms. 2) Signs in Bedrooms asking Guests to turn off underfloor heating when not there. 3) Added timer to 1 overhead Bar Heater in Dining area and removed 8 Bar Heaters. 4) Installed Humidity Controller in Lodge Drying Room plus signs asking guests to remove items of clothing when dry 5) Installed thermostatic controls for electric hydronic underfloor heating in living and basement areas.
Doorack Lodge	We have no new significant initiatives although we have signs at appropriate stations in the lodge encouraging less use of the heaters.
Telemark Lodge	Awareness communication and signage
The Lodge	The compendium asks guests to turn lights off, take short showers and keep heating on the cooler side. Staff/manager turn off lights for the night.
Tiobunga Lodge - Brindabella Ski Club	The fridge has been setup to shut down when power is turned off when lodge is vacant, this should save \$2.00 a day in electricity costs. All the old Fluro and Halogen lights have been replaced with LED ones. The two hot water heaters have been arranged so only one is used in summer or low load periods. Both are off peak with 50 litre booster elements.
Kosciusko Snow Revellers Club Limited	At the start of each skiing week, that week's captain refreshes members with the club rules including instructions on health and safety matters, particularly fire safety and energy awareness and the like
Rock Creek Ski Club Co-operative Limited	Installed a new wood burner with fan which has reduced the need for one heater.
Nordic Shelter	New energy-efficient heaters were installed in the reporting period. Acrylic panel installed on window to trial the thermal benefits of creating additional air gap on windows.
Eiger Chalet	Installation of sensor lights and auto turn off lights and we discuss with guests on check in
Kahane Lodge	Manager asks guests to conserve energy during guest briefing.
Apex Chalet - Apex Foundation	Timers fitted to heating & lights. All lights replaced with LED. Chalet re-clad in steel. External walls insulated & water proofed. Roof spaces double insulated & dual glazed windows. Heat pump replaced electric heating.
Fjellheim Ski Lodge Co-op Limited	We attended the Energy Management course run in Jindabyne to ensure our move to Gas space heating was well implemented as well as the need to investigate our peak energy management and lighting management. Lighting is in the process of being upgraded, about 80% complete.

## CONCLUSION

117 lodges (98%) provided an annual report for the reporting period: 1 March 2015 – 29 February 2016

From the data provided, the PRREMS lodges are above/have met the EMS target level for the following indicators:

- Zero pollution incidents.
- Less than 200L of water used per visitor night.
- 100% incidents managed in a timely manner.
- Less than 10% of lodges using open fireplaces as their primary source of heating.
- Less than 20% of lodges using ODS appliances.

From the data provided, the PRREMS lodges are below/have not met the EMS target level for the following indicators:

- 100% hydrocarbon storage containers compliant and managed appropriately.
- All redundant hydrocarbon fuel storage tanks decommissioned and sites validated.
- 100% of lodges who store chemicals/fuel to have well equipped spill kits.
- 100% of lodges who store chemicals/fuel clearly displaying PRREMS Lodge Incident Procedure.
- 100% of grease traps working effectively
- To reduce amount of CO<sub>2</sub> equivalent emitted per visitor night.
- To reduce energy used per visitor night by 5% annually.
- More than 5% of total energy used to come from renewable sources.
- 100% of organisations with **fully implemented EMS's for their operations within Perisher Range Resorts.**
- Lodges only using local native plants for landscaping.
- All lodges located in high priority areas on the Perisher Rehabilitation Plan to have rehab plans developed for their lease.
- No lodges using baits, snares, traps or rat poison as pest control without NPWS approval.
- 60% of lodges undertaking weed control
- 100% of significant incidents reported to NPWS.
- 100% of lodges recycling.
- More than 90% of lodges implementing water saving measures.
- 100% of lodges regularly inspecting their lease for erosion problems
- 100% of lodges with erosion issues taking actions to prevent and manage the erosion.
- 75% of lodges educating guests and staff about PRR cultural heritage values.
- 100% lodges have lease areas free from excess building materials, equipment, garbage, weeds and other items that negatively affect scenic value.
- 100% of staff EMS awareness trained.
- 100% of lodge committees annually review and discuss their environmental risks.

Please contact the NPWS Environmental Management Officer (EMS), on 64505612 or [perisher.ems@environment.nsw.gov.au](mailto:perisher.ems@environment.nsw.gov.au) if you have questions about the information contained in this report.

## PERFORMANCE TREND AND RECOMMENDATIONS

This table provides a performance trend for the targets that are currently not being met and a recommendation for improvement where relevant.

EMS Target	Trend 15/16	Recommendation
1. Lodges only using local native plants for landscaping.	<b>Stable</b> About 12% of lodges undertook rehabilitation works.	NPWS continue to support lodges with advice and materials if available
2. All lodges located in high priority areas on the Perisher Rehabilitation Plan to have rehab plans developed for their lease.	<b>Improvement</b> The number of lodges aware of their lodge being in a high conservation zone increased.	NPWS continue to work with lodges on an individual basis Provide rehabilitation guides to lodges and assist with works.
3. No lodges using baits, snares, traps or rat poison as pest control without NPWS approval.	<b>Improvement</b> Same number using - Increased number (1%) of lodges seeking advice and approval from NPWS for use of traps/baits.	NPWS to continue to work with lodges to ensure lawful use of traps and baits if required.
4. 60% of lodges undertaking weed control	<b>Stable</b> 48.7% undertaking weed control	No recommendation
5. 100% hydrocarbon storage containers compliant and managed appropriately.	<b>Stable</b> No significant change 1.7% responded with a non-compliant reply - same as 2014-15.	Continue to work with all lodges to ensure management systems are in place.
6. All redundant hydrocarbon fuel storage tanks decommissioned and sites validated.	<b>Stable</b> No change during this reporting period. A significant spike in numbers of tanks that were decommissioned in 13-14 & 14-15.	NPWS to complete review of UPSS decommissioning status of all resort installations in 2015-16. Advise lodges who have not complied with UPSS reg.
10. 100% of lodges who store chemicals/fuel to have well equipped spill kits.	<b>Improvement</b> 1% improvement in lodges with spill kits. 60.7% of lodges have a spill kit.	Consider modifying wording of question to better reflect <b>'no' responses.</b>
11. 100% of lodges who store chemicals/fuel clearly displaying PRREMS Lodge Incident Procedure.	<b>Improvement</b> 1% improvement in lodges with PRREM incident procedure displayed.	Consider modifying wording in Earthcheck of question to <b>better reflect 'no' responses.</b>
12. 100% of grease traps working effectively	<b>Improvement</b> 2.6% increase in lodges response. Improved knowledge - only .9% said they did not know.	Continue to work with remaining lodges to ensure all have working grease traps. Perisher team to update list and talk to outstanding lodges.
19. To reduce energy used per visitor night by 5% annually.	<b>Stable.</b> Relative to age of infrastructure, weather conditions, length of season. Target no longer attainable. Too many variables. The	Consider setting a benchmark target similar to the water use per visitor night. This would more accurately take into account the other

	threshold for this target has been reached.	variables. Seek input from EC3 Global for a benchmark.
20. More than 5% of total energy used to come from renewable sources.	<b>Improvement</b> 0.7% 24.1 % of lodges purchase "Greenpower" 51.7% of lodges conducted an energy audit in the last 12 months.	Continue to promote energy audits and OEH programs as they are developed. Ensure all renewable energy sources are accurately captured in the reporting.
22. More than 90% of lodges implementing water saving measures	<b>Stable</b>	No recommendation
23. 100% of lodges regularly inspecting their lease for erosion problems	<b>Improvement</b> 91.5% of lodges looking for erosion issues. This is an improvement of 3.5% in the last 12 months.	No recommendation
24. 100% of lodges with erosion issues taking actions to prevent and manage the erosion.	<b>Stable</b>	No recommendation
25. 75% of lodges educating guests and staff about PRR cultural heritage values.	<b>Improvement</b> 71.8% educating their staff & guests – a 1% improvement.	Everyone continue to support the PRR historical society to promote heritage in PRR
27. 100% of staff EMS awareness trained.	<b>Stable</b> – no significant change. 53.4% of lodges have no staff. 39.7 % have trained staff.	NPWS continue to develop educational programs and support lodge management
28. 100% of organisations with fully implemented EMS's for their operations within Perisher Range Resorts.	<b>Stable</b> 97.5% (100% in 12/13) The key performance indicator (KPI) for this target is number of lodges who have reported. This year 117/120 lodges reported.	Consider lowering the target to allow for circumstances beyond the control of the individual lodges - 98% Include lodges on Kosciuszko Road in reporting framework.
29. 100% of lodge committees annually review and discuss their environmental risks	<b>Stable</b> 78.6% - (< 0.7% decrease from last year) – not significant relevant to lodges reporting.	No recommendation

# APPENDIX 1

## How the energy calculator and CO<sub>2</sub> emissions are calculated

### How Energy and CO<sub>2</sub> emissions are calculated

The energy and carbon accounting component of the EarthCheck tool aims to enable travel and tourism operators to determine their total annual energy consumption and overall carbon footprint for the reporting year. The development of the energy and carbon calculator has been based on internationally accepted methodologies outlined in the following:

- Intergovernmental Panel for Climate Change (IPCC) 2006 IPCC Guidelines for National Greenhouse Gas Inventories.
- World Business Council for Sustainable Development (WBCSD) and the World Resource Institute (WRI), 2004 The Greenhouse Gas Protocol – A Corporate Accounting and Reporting Standard revised.
- International Organisation for Standardization (ISO) 14064 range of standards for greenhouse gas accounting.

### Energy Consumption

Background: Significant levels of energy can be consumed by infrastructure (e.g. within buildings), external services (e.g. lighting) and operation run transport (e.g. for customer and staff transfers, and onsite maintenance and delivery). An overall reduction in energy consumed can have major economic and environmental benefits, with the latter primarily through the conservation of natural resources and lowering associated greenhouse gas emissions.

Energy can be obtained from a variety of sources (e.g. Coal (Black), Hydro, Natural Gas, Diesel etc). Energy generated at power stations is commonly measured in kilowatt hours (kWh); energy generated from other sources is measured in various units, depending on the energy source, ranging from a volume (e.g. litres) to a weight (e.g. kilograms) to energy (kilowatt hours). All energy sources, however, are converted to Megajoules (MJ), the standard unit for measuring energy, using supplied conversion factors within the Online Benchmarking Software.

Objective: Minimise overall energy consumption.

Application: Total energy consumed relating to the **lodge’s activities**.

Calculation: The calculation of total Energy Consumption is divided into two calculators, Grid Electricity and Non-grid energy sources. Grid Electricity is energy that is sourced from the local substation over transmission lines arranged on a grid. Total usage for Grid Electricity is available from energy bills from an **organisation’s energy** supplier. Non-grid energy sources relate to any other energy that is consumed; this may include vehicle fuel consumption, light fuel oil, and onsite generators.

Energy Consumption EarthCheck indicator measure:

$$= \frac{\text{Total energy used (MJ)}}{\text{Activity Measure}}$$

Greenhouse gas reductions: Emissions from energy production and distribution.

**CO<sub>2</sub>-e Production**

**Background:** Whilst reducing overall energy consumption is essential to reducing greenhouse gas production, the organisation can also address the issue through a variety of other ways. These are predominantly using either lower greenhouse gas-producing fuels (such as LPG) or preferably increasing the use of renewable sources of energy (e.g. wind, solar or hydro).

**Objective:** Minimise the net production of the greenhouse gas, carbon dioxide (CO<sub>2</sub>) from energy consumption.

**Application:** Assessment of total CO<sub>2</sub>-e emissions due to the **lodge’s activities**.

**Calculation:** CO<sub>2</sub>-e Production is calculated based on the energy sources the organisation enters within the energy calculator within the Online Benchmarking Software. The organisation will not be required to calculate this indicator themselves.

CO<sub>2</sub>-e Production EarthCheck indicator measure:

$$= \frac{\text{Total weight of CO}_2\text{-e produced (kg) per annum}}{\text{Activity Measure}}$$

**Greenhouse gas reductions:** Reduction in emissions from use of more suitable energy sources.

This Performance Report was compiled by EarthCheck for the NSW National Parks & Wildlife Service, Office of Environment and Heritage



**EARTHCHECK**



**Office of Environment & Heritage**  
NSW National Parks & Wildlife Service

