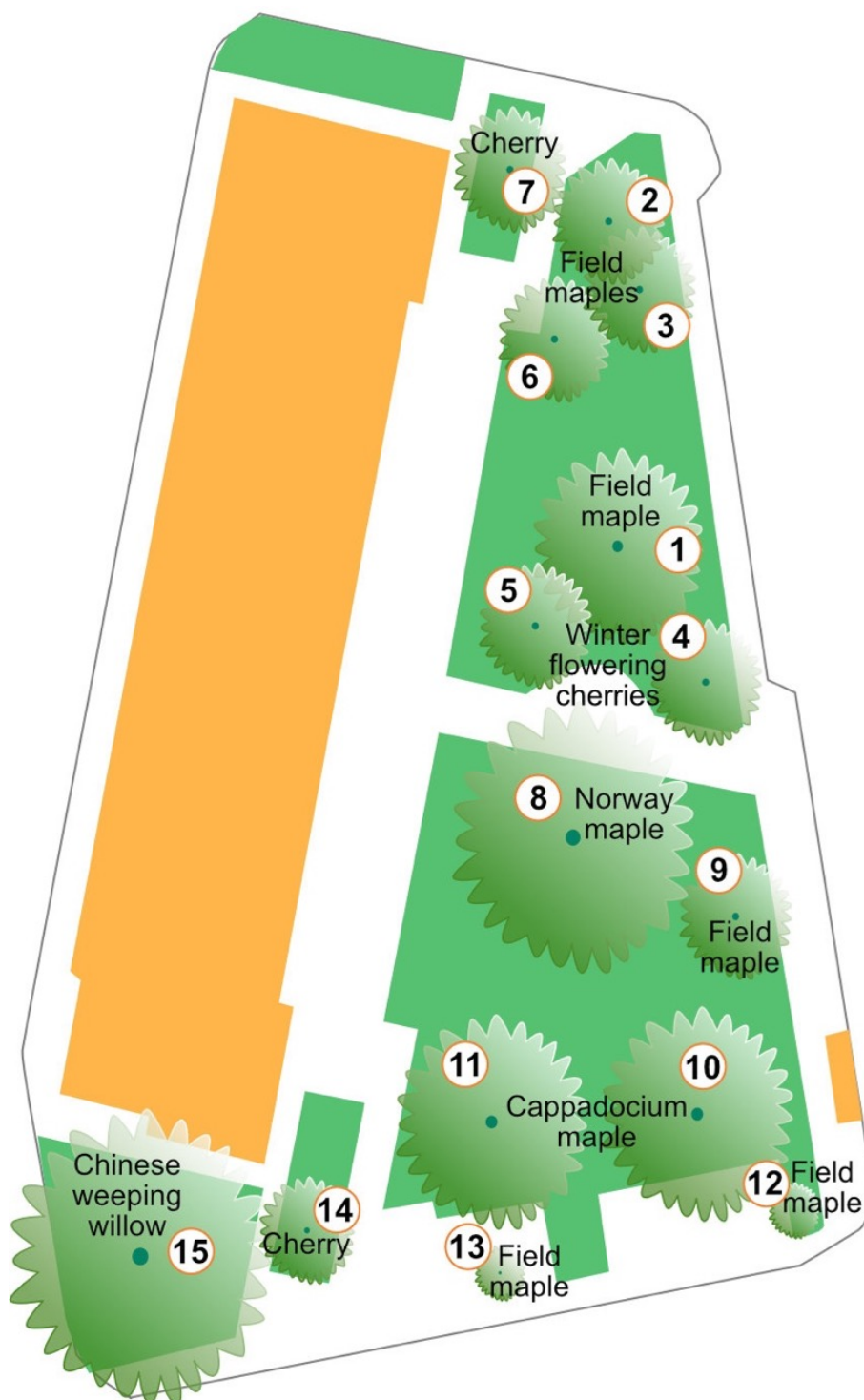


Favourite trees



Tell us your best stories about the Wulfstan Way trees and we can include them in our tree trail project. E-mail info@nightingalegarden.org.uk or tell one of the Raingardeners on the first and third Saturday mornings (from 10 to 11 am).

A collaboration between Queen Edith's in Bloom, The RHS, 28th Cambridge Cubs, City Council Streets and Open Spaces and The Cambridge Botanic Garden.

