

SPECIAL REPORT ★★★
Wealthiest Angelenos
THE LIST

RANKED BY NET WORTH

2016 Rank	2015 Rank		Net worth (in billions)		% Change
			2016	2015	
1	1	Patrick Soon-Shiong	\$15.4	\$15.3	1%
2	2	Elon Musk	\$13.3	\$13.9	-4.3%
3	3	Eli Broad	\$7.64	\$7.64	0%
4	9	Sean Parker	\$7.62	\$5.80	31.4%
5	7	John Tu	\$7.10	\$6.46	10%
6	4	David Geffen	\$6.90	\$6.95	-1%
7	8	Sumner Redstone	\$5.50	\$5.70	-3.5%
8	13	Tamara Hughes Gustavson	\$5.49	\$4.15	32.3%
9	11	Stewart & Lynda Resnick	\$4.99	\$4.80	4%
10	5	Do Won & Jin Sook Chang	\$4.76	\$6.88	-31%
11	12	Steven Ferencz Udvar-Hazy	\$4.70	\$4.40	6.3%
12	10	Edward P. Roski Jr.	\$4.33	\$3.75	15.5%
13	15	Haim Saban	\$4.10	\$3.90	5.1%
14	14	William Barron Hilton	\$4.00	\$4.12	-3%
15	17	A. Jerrold Perenchio	\$3.96	\$3.77	5%
16	16	Steven Spielberg	\$3.94	\$3.90	1%
17	20	Marion Anderson	\$3.90	\$3.40	15%
18	22	Rick J. Caruso	\$3.80	\$3.30	15%
19	19	Donald & Rochelle Sterling	\$3.77	\$3.40	10.8%
20	18	Anthony Pritzker	\$3.53	\$3.51	1%
21	24	Tom Gores	\$3.43	\$3.20	7.2%
22	23	David Murdock	\$3.10	\$3.20	-2.8%
23	26	Michael Milken	\$3.08	\$3.01	2.3%
24	21	Jeffrey Stuart Skoll	\$2.93	\$3.32	11.7%
25	25	Don Hankey	\$2.43	\$2.56	-1.2%

2016 Rank	2015 Rank		Net worth (in billions)		% Change
			2016	2015	
26	27	Alec Gores	\$2.32	\$2.10	10.5%
27	30	Eric Smidt	\$1.96	\$1.86	5.4%
28	31	Gary Michelson	\$1.92	\$1.85	3.8%
29	28	Michael Eisner	\$1.90	\$1.90	0%
30	29	Bruce A. Karsh	\$1.84	\$1.89	-2.6%
31	34	George Joseph	\$1.78	\$1.75	1.8%
32	46	Lowell Milken	\$1.73	\$1.34	29%
33	32	Bradley Wayne Hughes Jr.	\$1.67	\$1.79	-6.7%
34	39	Bobby Murphy	\$1.60	\$1.50	6%
34	39	Evan Spiegel	\$1.60	\$1.50	6%
36	33	Neil Kadisha	\$1.55	\$1.76	-12%
36		Jeffrey Katzenberg*	\$1.55		
38	37	Thomas Barrack	\$1.53	\$1.41	8.5%
38	41	Marc Nathanson	\$1.53	\$1.46	4.8%
40	38	Nicholas Berggruen	\$1.51	\$1.57	-4.7%
40	44	Ray R. Irani	\$1.51	\$1.29	17%
42	35	Antony Ressler	\$1.48	\$1.60	-7.5%
43	45	John F. Shea	\$1.42	\$1.25	13.6%
44		Gary Winnick*	\$1.33		
45	48	Jeffrey Gundlach	\$1.30	\$1.20	8.3%
46	50	Vera Guerin	\$1.25	\$1.16	7.8%
47	42	Charles Munger	\$1.24	\$1.46	-15%
48	43	Aubrey Chernick	\$1.23	\$1.29	-7.7%
49		Donald E. Friese*	\$1.20		
49		Shane Smith*	\$1.20		

*not on list in 2015



Please join us in welcoming three new Financial Advisors to our Newport Beach and Westwood offices.

Together, they bring more than 60 years of investment experience to serve you.



Carl I. Kawabe, CFA®
 Managing Director – Investments
 949-759-5382



Jonathan S. Hoot
 Managing Director – Investments
 310-443-2567



Terence D. Lynch
 Senior Vice President – Investments
 310-443-2566

Wealth Management | Investment Planning | Liability Management

Newport Office
 620 Newport Center Dr., Ste. 1600
 Newport Beach, CA 92660
 949-644-2220

Westwood Office
 10900 Wilshire Blvd., 11th Flr.
 Los Angeles, CA 90024
 310-824-8723

Investment and Insurance Products:

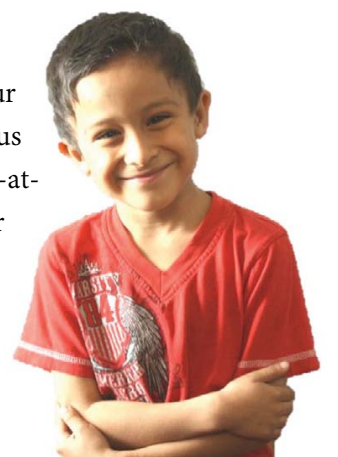
▶ NOT FDIC Insured ▶ NO Bank Guarantee ▶ MAY Lose Value

© 2015 Wells Fargo Advisors, LLC, Member SIPC, a registered broker-dealer and a separate non-bank affiliate of Wells Fargo & Company. 0216-04154 [97948-v1] (2217801_478784)

Dear Republicans,

YOU ARE WELCOME... given that the presumptive GOP candidate for President 'promised' to self-fund his campaign, this relieves you of any obligation to donate. Good news all around we think...

Would you consider re-directing your campaign donations to those of us working in the trenches with highly-at-risk, low-income students and their families? Our students navigate thorny social & community challenges every day, not just during election seasons... help us replace some of the grit in their lives with more grace.



YOU ARE WELCOME to support our campaign to 'work with the willing' and help our students improve their lives by pursuing education, practicing personal responsibility, and cultivating individual initiative.

From all of us at Strive, we look forward to hearing from you.



A Mini Campus for Inner City Children
 Strive-la.org | 323-779-1064

