



# DURA FAUCET®

**DF-SA300CL - RV Shower Slide Bar**



## **MAINTENANCE AND CLEANING**

Cleaning Tips: The finish on your product is designed to retain its beautiful sheen for years. To maintain the original look of the finish, a little care and caution should be used. We recommend the use of mild soap and water to clean the product.

THE USE OF ABRASIVE CLEANERS MAY SCRATCH THE FINISH OR CAUSE OTHER DAMAGE.

## **RECOMMENDED TOOLS AND MATERIALS**

- ◆ Screwdriver or drill

## **BEFORE YOU BEGIN**

There are a variety of things to do before installing any new plumbing system into your RV. Before you begin work make sure you:

- ◆ Shut off the main water supply
- ◆ Cover your drain to prevent loss of parts
- ◆ Observed any local plumbing codes
- ◆ Inspect fixture for damage - Replace as necessary

\* Dura Faucet reserves the right to make any revisions in the design of products without notice.

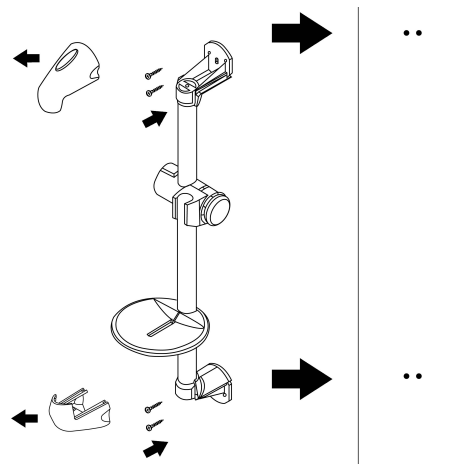
## INSTALLATION

### 1 New Slide Bar Preparation

Clean surface where the slide bar will be mounted. Attach the soap dish onto the slide bar and attach wall anchors to either end of the bar.

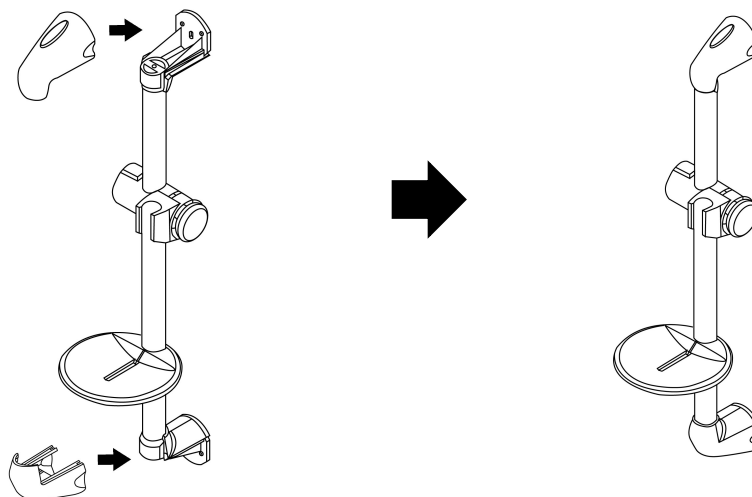
### 2 Remove End Covers and Mount Slide Bar

Remove the end covers to reveal the mounting hardware. Using the provided screws and screw wall anchors, mount the slide bar with the soap plate facing outwards.

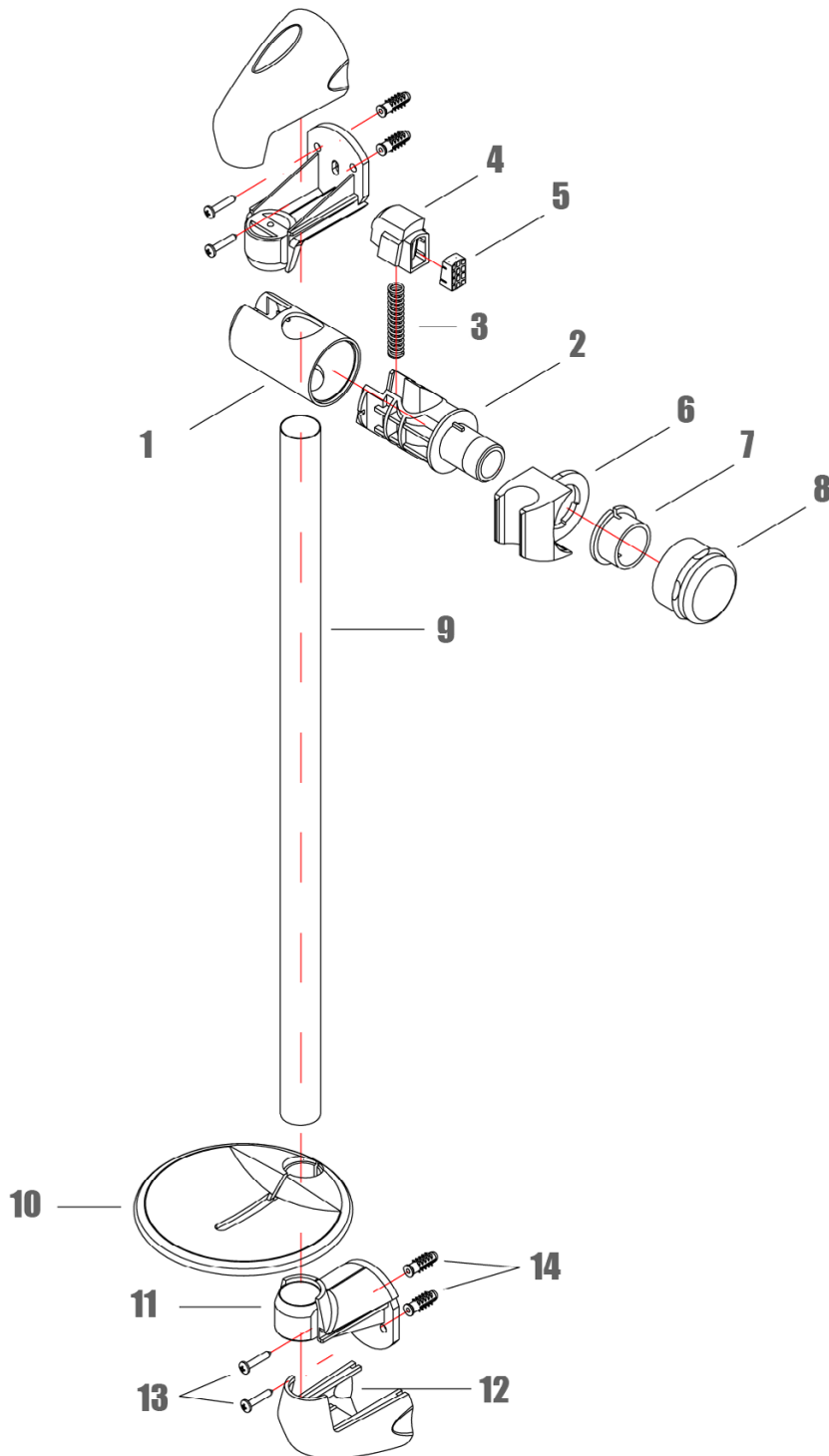


### 3 Attach Wall Anchor Covers

Attach the end covers over the already mounted hardware.



## SPEC DRAWING / PARTS



- 1** ABS Section (1)
- 2** PP Post (1)
- 3** Stainless Steel Spring (1)
- 4** ABS Push Button Seat (1)
- 5** TPR Stop Plug (1)
- 6** ABS Socket (1)
- 7** PP Regular Insert (1)
- 8** ABS Nut (1)
- 9** Brass Tube (1)
- 10** ABS/AS Soap Plate (1)
- 11** ABS Wall Seat (2)
- 12** ABS Wall Seat Cover (2)
- 13** Iron Screw (4)
- 14** PE Gecko (4)