

# **Design39Campus Summer 2017**

Welcome to the 2016 Design39Campus BRIDGE Summer Program. This booklet will give you an overview of the fun and enriching summer we have planned for your child. Please read the information carefully and let us know if you have any questions. You can contact us by phone at (858) 676-6516 or by E-mail at [dkirchmeier@powayusd.com](mailto:dkirchmeier@powayusd.com), [rhaynes@powayusd.com](mailto:rhaynes@powayusd.com) and [mdewet@powayusd.com](mailto:mdewet@powayusd.com). If we are off campus on a field trip and it is an emergency please call Mr. Donnie at (619) 361-5619.

## **PROGRAM DESCRIPTION**

**“ESS is a bridge between school and home where children are encouraged to learn, create, and explore within their school, community and world.”**

Our program is staffed with highly qualified and trained individuals. Our Program Aides help maintain a safe and enjoyable environment for your child. We have an average adult to child ratio of one BRIDGE staff member to approximately every 15 children.

## **PROGRAM ACTIVITIES**

Our staff is well trained to provide for the emotional and social needs of your child in a safe and nurturing environment. Our program is geared toward expanding your child's world through arts and crafts projects, explorations, reading and language reinforcement, math concepts, field trips, and guest speakers.

## **PROGRAM OPERATIONS**

Our BRIDGE center is open from 6:30am to 6:00pm, Monday through Friday. Your child must be signed in when dropped off and signed out when picked up. Your child may only be released to individuals that you have listed on your emergency card. Please remind all persons picking your child up that they will need a picture I.D. with them for us to release your child to them. If you need someone other than an individual on your emergency card to pick your child up, please write that information in the parent communication binder. Please remind that individual to come with their picture I.D.

## ILLNESS, MEDICATION, & SUNSCREEN



You will be notified if your child becomes ill. We suggest you review your emergency contacts list and make any necessary changes. Please give other families the same consideration you would like to be given and keep sick children at home. Please notify us if your child has a communicable disease or head lice. All medication must be authorized by a physician. This includes aspirin, Tylenol, and cough medicine. We recommend requesting an additional container from the pharmacist to eliminate the inconvenience of transporting the medicine to and from BRIDGE. Lip balm, cough drops, throat lozenges, and sunscreen do not require a doctor's note, but parent authorization is needed. When needed, these items must be supplied by you and clearly labeled. They will be stored in the BRIDGE office and given to your child for self-administration. **We recommend applying an “all day protection” sun block on your child every morning before they leave home.** We will provide sunscreen for your child if needed during the day.

## HEALTH REPORTS

An incident report will be completed for minor accidents and these will be filed in the BRIDGE Office, and your child's name will be highlighted on the sign in and out book located at the parent information table. You will be notified by telephone and a formal accident report will be filed for any accidents of a serious nature. Our staff is trained in CPR & First Aid. PUSD guidelines are followed for treating emergencies.

## DISCIPLINE



All children attending BRIDGE are required to follow school district rules/agreements. These rules/agreements will be explained and sufficient warning will be given, children not cooperating will lose privileges and may not participate in some activities. Behavior referrals and parent contacts will be used for excessive and recurring problems. **Continued failure to follow our agreements may result in dismissal from the BRIDGE program.**

## ABSENCES



We appreciate being notified when your child will not be attending. You are welcome to call or email, whichever is most convenient for you. Credits are not available for illness or partial attendance.

## BREAKFAST, LUNCH, & SNACKS



We allow children to bring their breakfast to BRIDGE. If your child brings their breakfast, they will be required to eat in the designated area and clean up after themselves. **Please provide a morning snack, lunch, and drinks.** We will serve an afternoon snack. We are unable to refrigerate or heat any items. Lunches for field trips should be packed in disposable bags inside a plastic grocery bag, with a throw away drink container. No glass containers are allowed at school or on field trips. You will be notified in the weekly “What’s Up” flyer when BRIDGE will provide lunch.

## Sign In and Out Table



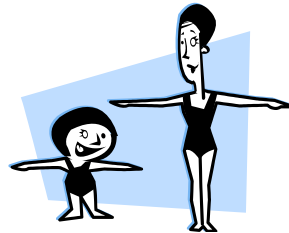
The sign in and out table has information that pertains to BRIDGE and your child. It is one way that we communicate with you about what is going on and what is coming up. **PLEASE CHECK** the signs posted often; we update the information on it regularly.

## **FRIENDLY REMINDERS**

**Lunches-** There will be no cafeteria service during the summer program. Your child will need a morning snack, a lunch, and plenty of liquids to drink. We will provide an afternoon snack. Unfortunately, we are unable to heat or refrigerate your child's lunch.



**Field Trip Rules/Agreements-** All children are expected to follow the school and BRIDGE rules/agreements of behavior on all field trips and on campus. **Failure to do so may result in dismissal from the BRIDGE program.**



It is **MANDATORY** for every child to wear his/her **BRIDGE T-Shirt** on **Field Trip Days** and Movie/Swim Days.



# Field Trip Reminders

**\*BRIDGE T-Shirts are mandatory attire for your child's field trip days.**

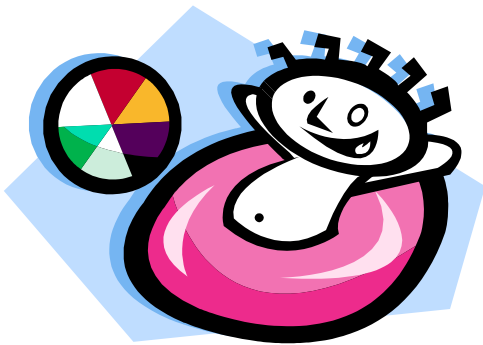
On field trip days, please have your child dress appropriately for the current weather and the trip that is planned. Good walking shoes are very important. Sandals may not be worn.

**\*Permission slips are required. Please note the trip time on the "What's Up" flyer and have your child at the center in plenty of time.**

**\*The BRIDGE staff can be reached by cell phone for emergencies on field trips. The number is (619) 361-5619.**

## RECREATIONAL SWIM AND MOVIES

\*When your child's group is scheduled to attend the pool in the afternoon we will go to the Ned Baumer Aquatic Center (no extra cost). Children should bring their BRIDGE tote to carry their belongings.



\*When your child's group is scheduled to go to the movies we will go to the theatre in Mira Mesa for a 10:00 am movie. Purchases of snack-packs (popcorn, fruit snacks & soda/fruit punch/water) on movie days are optional and require an additional fee of \$4.25.

