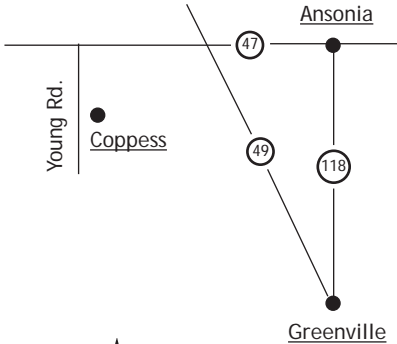


Coppess Nature Sanctuary




Young Road \ County Road 85

Take only memories,
Leave only footprints

LEGEND

Parking	Trail (3/4 mi.)
Bench	MatureWoodland
Wet area	YoungWoodland
Shelter/Picnic	Seasonal Pools
* Bulletin board	

The Coppess Loop Trail

- Level, packed gravel
- Trail length: 3,910 feet (about 3/4 mi.)
- At a leisurely pace: approx. 20 min.



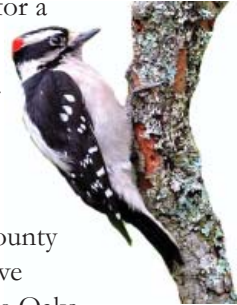
Fawn Mushroom



Welcome to Coppess

Coppess Nature Sanctuary is located in west central Darke County at 10277 Young Road (County Road 85). A level, well maintained ¾ mile loop trail, beginning and ending at a convenient parking area, make this an ideal place for a short hike satisfying a wide variety of interests and abilities.

Downy Woodpecker



Coppess Nature Sanctuary offers a splendid example of an Oak-Hickory forest and a glimpse of some of the great natural diversity of the Darke County region as it appeared 200 years ago. Five

species of large Oaks dominate the area. Several White Oaks have a diameter of 40 inches or more. Shagbark and Bitternut Hickories are scattered throughout the area. Other trees of interest include American Beech, American Hornbeam, White Ash, Box Elder and Sugar Maple. More than

Burr Oak



38 species of woody plants have been identified

The forest floor plant community is also impressive with more than 84 species including spring wildflowers such as Dutchman's Breeches, Trilliums, Bloodroot, Mayapple, and Yellow Trout Lily.

Yellow Trout-lily



Red Admiral Butterfly

DARKE COUNTY PARKS

Park Hours

All of the Darke County Parks are open sunrise to sunset. Visitors are encouraged to exit the park while there is still enough light to navigate the trails safely.

Park Programs

Darke County Parks naturalists lead programs throughout the year. Many programs are nature-related, such as bird hikes, wildflower walks, or programs to explore the world of nature at night. Other programs may focus on the rich history of our area or outdoor skills such as fishing and camping. Schools, clubs and other groups are encouraged to contact Darke County Parks to schedule a program to support school curriculum or other special interests. Darke County Parks publishes a free quarterly newsletter that provides information on programs, clubs and other park-related information.

How to Reach Us

The Parks' Offices are located in the Nature Center at Shawnee Prairie Preserve, 4267 State Route 502 West at the edge of Greenville. See the website for current hours of operation. More information about programs and activities is available at the Center, by calling 937.548.0165 or by logging on to www.darkecountyparks.org.

Enjoy, Don't Destroy

Help us protect Darke County Parks. Do not pick, collect or disturb plants, animals or artifacts of any kind. Please stay on designated trails. Motor vehicles are restricted to roadways. Parking is in designated areas only. Please do not litter. Dogs must be leashed at all times.



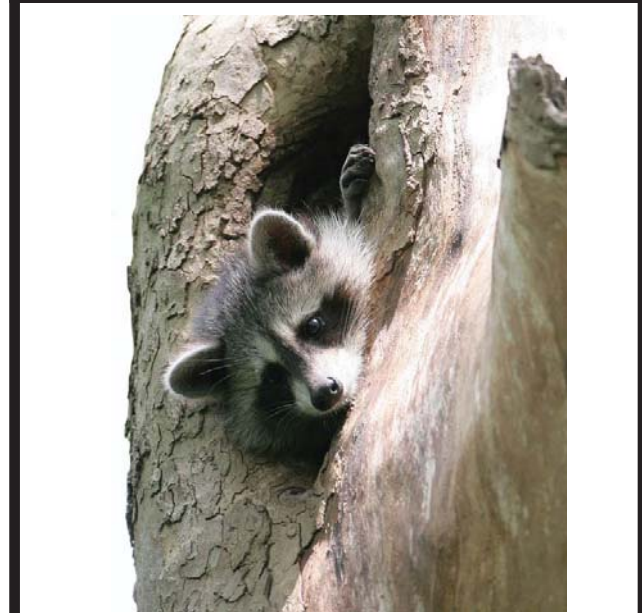
Darke County Parks

4267 State Route 502
Greenville, Ohio 45331
937-548-0165

www.darkecountyparks.org

PATHFINDER

COPPESS NATURE SANCTUARY



Coppess Nature Sanctuary is a 32-acre woodland donated by Mrs. Frances Carpenter and was the catalyst for the creation of the Darke County Park District in 1972. Her wish to preserve a portion of Darke County as it might have appeared in pre-settlement time is a lasting tribute to her family and a legacy to all Darke County residents.

