

Get Involved!

EALT protects ecologically significant land which is important habitat for many moth species. Support EALT by:

Volunteering! Visit www.ealt.ca/volunteer or email info@ealt.ca to get started.

Donating! Visit www.ealt.ca/donate for more information.



Plant native flowers in your garden to benefit native pollinators. You can obtain native flower seeds from the Edmonton Native Plant Group.

Passionate about identifying moths and butterflies? Join the Alberta Lepidopterists' Guild, visit <http://www.biology.ualberta.ca/uasm/alg/> for more information.

Sources:

<http://entomology.museums.ualberta.ca/>
<http://bugguide.net/>



ISBN: 978-0-9949021-5-3

Moth Identification Guide



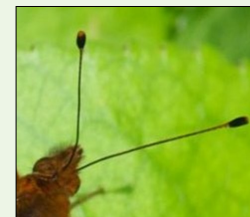
Introduction

The Edmonton and Area Land Trust (EALT) is a non-profit organization dedicated to conserving the region's natural areas through community stewardship. We work towards an Edmonton region where natural area systems and their wildlife are valued and preserved for future generations.

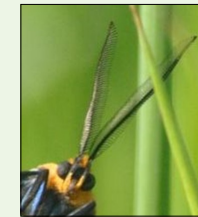
On our conservation lands, it is common to see members of the Lepidoptera order, which includes butterflies and moths. These insects share many similarities such as a life cycle that includes larvae, pupae, and flying adult stages. They also play a key role in their ecosystem as pollinators.

The easiest way to tell the difference between these astonishing flying insects is to look at their antennae. If the antennae are thickened or club-like on the end, you are looking at a butterfly. If the antennae are feathered or thread-like, you have found a moth.

Butterfly Antennae



Moth Antennae



Once you have identified the species as a moth, use this guide to determine if it is one of these species, common to the Edmonton region and EALT natural areas.



Police Car Moth

Gnophaela vermiculata
Wing Span: 54 mm
Habitat: Open, wooded areas of the foothills and boreal forest.

Betty Fisher

Bold-feathered Grass Moth

Herpetogramma pertextalis
Wing Span: 22 mm
Host plant: Low plants, violets.



Colleen Raymond

Colleen Raymond

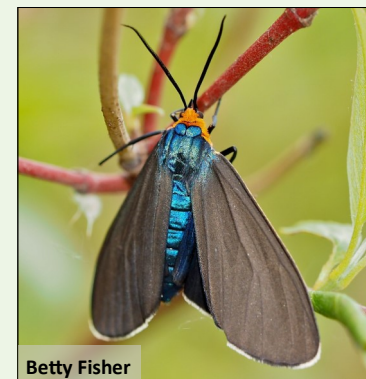


Purple-backed Cabbageworm

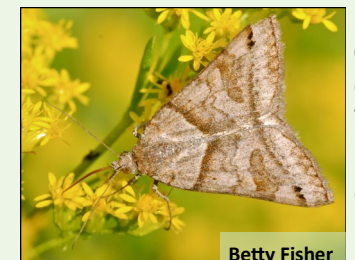
Evergestis pallidata
Wing Span: 19-29 mm
Host plant: Mustards including bittercress, cabbage, and horseradish.

Virginia Ctenucha

Ctenucha virginica
Wing Span: 40-50 mm
Habitat: Open, grassy habitats in aspen parkland and boreal regions.



Betty Fisher



Clover Looper

Caenurgina crassiuscula
Wing Span: 30-40 mm
Habitat: Open grassy areas such as meadows, pastures, roadsides.

Betty Fisher

Parthenice

Tiger

Grammia parthenice
Wing Span: 35-55 mm
Habitat: Open grassy areas throughout parkland and mixed boreal forest.

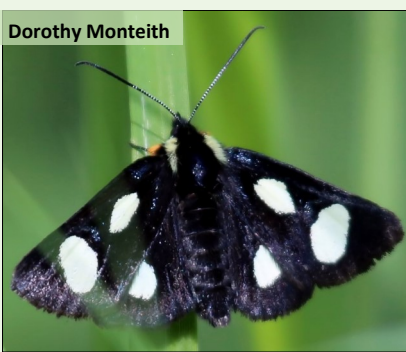


Andrea Jackson

Dorothy Monteith

Eight-spotted Forester

Alypia octomaculata
Wing Span: 30-37 mm
Host plant: Climbing shrubs.

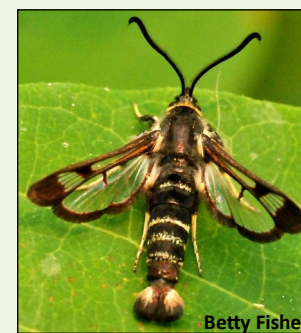


Lesser Wainscot

Mythimna oxygala
Forewing Length: 13-17 mm
Habitat: Fields, meadows, open grassy areas.



Colleen Raymond



Betty Fisher

Fireweed Clearwing

Albuna pyramidalis
Forewing Length: 8-14 mm
Habitat: Adults are attracted to flowers.



Betty Fisher

Friendly Probole

Probole amicaria
Wing Span: 23-35 mm
Habitat: Moist deciduous and mixedwood forests.

Celery Looper

Anagrapha falcifera
Wing Span: 32-34 mm
Habitat: Open areas like bogs, meadows, and gardens.



Betty Fisher



Colleen Raymond

Black-rimmed Prominent

Pheosia rimosa
Wing Span: 43-62 mm
Habitat: Deciduous and mixedwood forest.

Hummingbird Clearwing

Hemaris thysbe
Wing Span: 45-62 mm
Habitat: Open areas with shrubs, young trees, gardens.



Betty Fisher

White Eulithis

Eulithis explanata
Wing Span: 28-35 mm
Habitat: Bogs and shrubby areas.



Colleen Raymond



Betty Fisher

Pink-banded Sallow

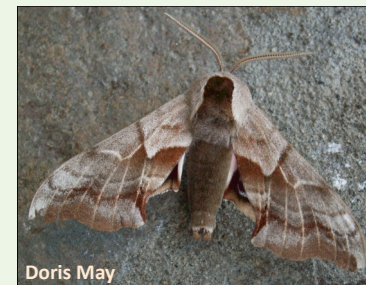
Xanthia tatago
Wing Span: 30-34 mm
Habitat: Moist areas where willow species grow.

Common Gluphisia

Gluphisia septentrionis
Wing Span: 25-33 mm
Habitat: Poplar forest and mixedwood.



Andrea Jackson



Doris May

One-eyed Sphinx

Smerinthus cerysi
Wing Span: 62-90 mm
Habitat: River margins, moist woods, and wetlands.



Gary Anweiler

Pale Beauty

Campaea perlata
Wing Span: 28-51 mm
Habitat: Widespread in forested areas.

Green Arches

Anaplectoides prasina
Wing Span: 45-60 mm
Habitat: Wooded areas.



Andrea Jackson



Colleen Raymond

Maple Webworm Moth

Pococera asperatella
Wing span: 16-25 mm
Host plant: Maple.

Omnivorous Leafroller

Archips purpurana
Wing Span: 18-27 mm
Habitat: Open or shrubby areas.



Colleen Raymond

Four-spotted Ghost

Sthenopis purpurascens
Wing Span: 94-105 mm
Habitat: Mature mixedwood and poplar forest, near wetlands.



Andrea Jackson



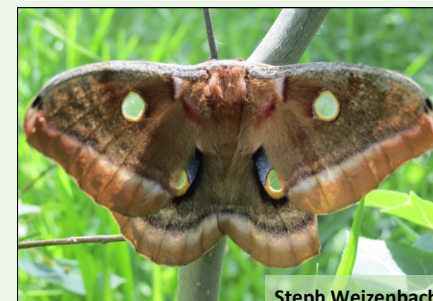
Andrea Jackson

Catocaline Dart

Cryptocala acadensis
Wing Span: 25-30 mm
Host plant: Arrowhead, dock, dogbane, elderberry, and others.

Polyphemus Moth

Antheraea polyphemus
Wing Span: 100-150 mm
Habitat: Deciduous forest, and river valleys.



Steph Weizenbach



Colleen Raymond

Three-lined Leafroller

Pandemis limitata
Forewing Length: 7-12 mm
Habitat: Deciduous trees and shrubs.