

Get Involved!

EALT protects ecologically significant land which is important habitat for many butterfly species. Support EALT by:

Volunteering! Visit www.ealt.ca/volunteer or email info@ealt.ca to get started.

Donating! Visit www.ealt.ca/donate for more information.



Plant native flowers in your garden to benefit butterflies. You can obtain native flower seeds from the Edmonton Native Plant Group.

Passionate about identifying moths and butterflies? Join the Alberta Lepidopterists' Guild, visit <http://www.biology.ualberta.ca/uasm/alg/> for more information.

Sources:

<http://www.butterfliesandmoths.org/>
<http://www.insectsofalberta.com/>



ISBN: 978-0-9949021-3-9

Butterfly Identification Guide



Betty Fisher

Introduction

The Edmonton and Area Land Trust (EALT) is a non-profit organization dedicated to conserving the region's natural areas through community stewardship. We work towards an Edmonton region where natural area systems and their wildlife are valued and preserved for future generations.

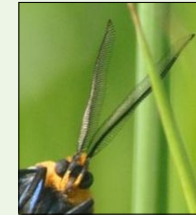
On our conservation lands, it is common to see members of the Lepidoptera order, which includes butterflies and moths. These insects share many similarities such as a life cycle that includes larvae, pupae, and flying adult stages. They also play a key role in their ecosystem as pollinators.

The easiest way to tell the difference between these astonishing flying insects is to look at their antennae. If the antennae are thickened or club-like on the end, you are looking at a butterfly. If the antennae are feathered or thread-like, you have found a moth.

Butterfly Antennae



Moth Antennae



Once you have identified the species as a butterfly, use this guide to determine if it is one of these species, common to the Edmonton region and EALT natural areas.



Dorothy Monteith

Mandan Skipper

Carterocephalus palaemon mandan
Wing Span: 2.5 – 3.2 cm
Habitat: Openings in forests; moist meadows, and streamsides.

European Skipper

Thymelicus lineola
Wing Span: 2.5 – 2.9 cm
Habitat: Open grassy areas like meadows, pastures, road edges.
INTRODUCED SPECIES



Colleen Raymond



Colleen Raymond

Dreamy Duskywing

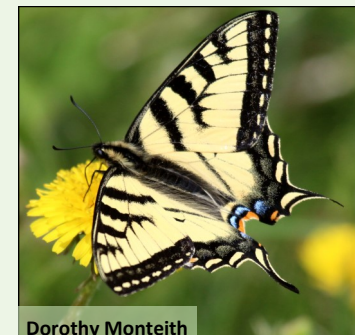
Erynnis icelus
Wing Span: 2.9 – 3.8 cm
Habitat: Woodland edges or openings.

Hobomok Skipper

Poanes hobomok
Wing Span: 2.5 – 4.3 cm
Habitat: Edges and openings of damp woods, bogs, along streams, and parks.



Colleen Raymond



Dorothy Monteith

Canadian Tiger Swallowtail

Papilio canadensis
Wing Span: 6.7 – 8 cm
Habitat: Deciduous and mixed woods and forest edges.



Cabbage White

Pieris rapae
Wing Span: 4.5-5.8 cm
Habitat: Open spaces including gardens, roadsides, cities, and suburbs.
INTRODUCED SPECIES



Dorothy Monteith

Mustard White

Pieris oleracea
Wing Span: 3.8 – 5.7 cm
Habitat: Open forests and fields, deciduous woods, bogs, and streamsides.



Dorothy Monteith



Colleen Raymond

Western White

Pontia occidentalis
Wing Span: 3.8 – 6.3 cm
Habitat: Dry areas, fields, pastures, sandy areas, railroad beds, and roads.



Colleen Raymond

Dorcas Copper

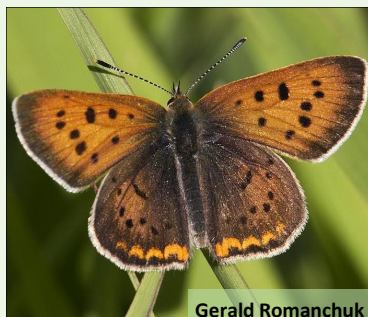
Lycaena dorcas
Wing Span: 2.5 – 3.2 cm
Habitat: Edges of bogs, old brushy fields, open places near small streams.



Colleen Raymond

Purplish Copper

Lycaena helloides
Wing Span: 3-3.8 cm
Habitat: Meadows, marshes, streamsides and valleys.



Gerald Romanchuk



Dorothy Monteith

Painted Lady

Vanessa cardui
Wing Span: 5.1 – 7.3 cm
Habitat: Almost everywhere, especially in open or disturbed areas.

Northern Crescent

Phyciodes cocyta
Wing Span: 3.2-4.8 cm
Habitat: Moist open areas in rocky places, and wooded streams.



Colleen Raymond



Colleen Raymond

Atlantis Fritillary

Speyeria atlantis
Wing Span: 5 – 7 cm
Habitat: Meadows, bogs, forest openings, and upland pastures.

Spring Azure

Celastrina ladon
Wing Span: 2.2 – 3.5 cm
Habitat: Wooded marshes and swamps; openings and edges of deciduous woods.

Mourning Cloak

Nymphalis antiopa
Wing Span: 5.7 – 10.1 cm
Habitat: Riparian areas, woods, and openings.



Greg Pohl



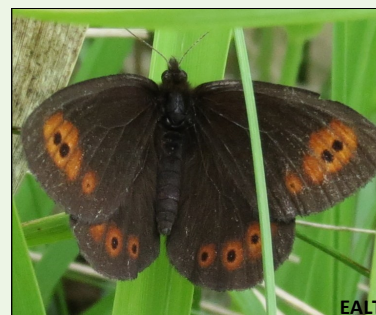
Colleen Raymond

Red-disked Alpine

Erebia discoidalis
Wing Span: 3.8 – 4.9 cm
Habitat: Open grassy bogs and other areas with acidic soils.

Common Alpine

Erebia epispodea
Wing Span: 4.2 – 5.1 cm
Habitat: Moist open grassy fields, meadows, and open forests.



EALT



Dragomir Vujnovic

Viceroy

Limenitis archippus
Wing span: 6.3 – 8.6 cm
Habitat: Moist, open or shrubby areas such as lake and swamp

edges, and wet meadows.

Common Wood-nymph

Cercyonis pegala
Wing Span: 4.5 - 7.6 cm
Habitat: Grassy areas, prairies, open meadows, bogs.



Colleen Raymond



Colleen Raymond

Common Ringlet

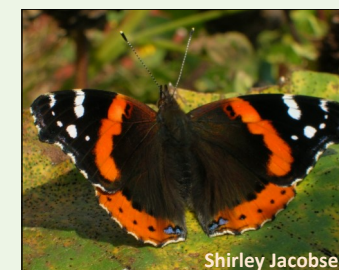
Coenonympha tullia
Wing Span: 3.4 – 3.8 cm
Habitat: Grasslands, fields and meadows.

Satyr Angewing

Polygonia satyrus
Wing Span: 4.5 – 6.4 cm
Habitat: Streams, wooded ravines, marshes, fields, openings and edges of moist woods.



Colleen Raymond



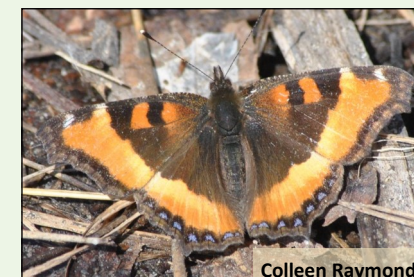
Shirley Jacobsen

Red Admiral

Vanessa atalanta
Wing Span: 4.5 – 7.6 cm
Habitat: Moist woods, parks, marshes, and fields.

Milbert's Tortoiseshell

Aglais milberti
Wing Span: 4.2 – 6.3 cm
Habitat: Wet areas near woodlands; marshes and moist pastures.



Colleen Raymond

Greenish Blue

Plebejus saepiolus
Wing Span: 2.5 – 3.2 cm
Habitat: Bogs, open fields, meadows, stream edges, and open forests.



EALT

White Admiral

Limenitis arthemis
Wing Span: 5.7 – 10.1 cm
Habitat: Deciduous or mixedwood forests.



Colleen Raymond