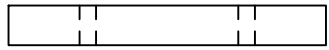


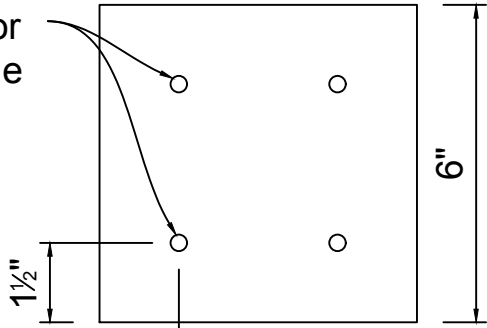
**Saw-Whet Owl  
 Nest Box**

① Floor



6"

$\frac{5}{16}$ " Holes for Drainage

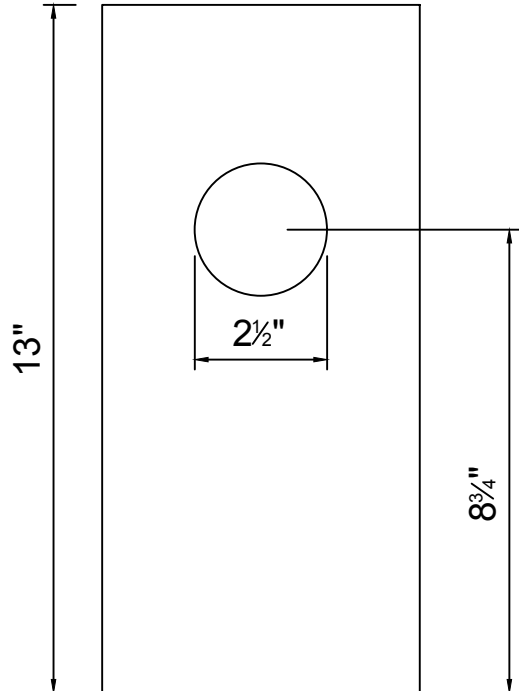


1 1/2"

1 1/2"

③ Front Door

6"

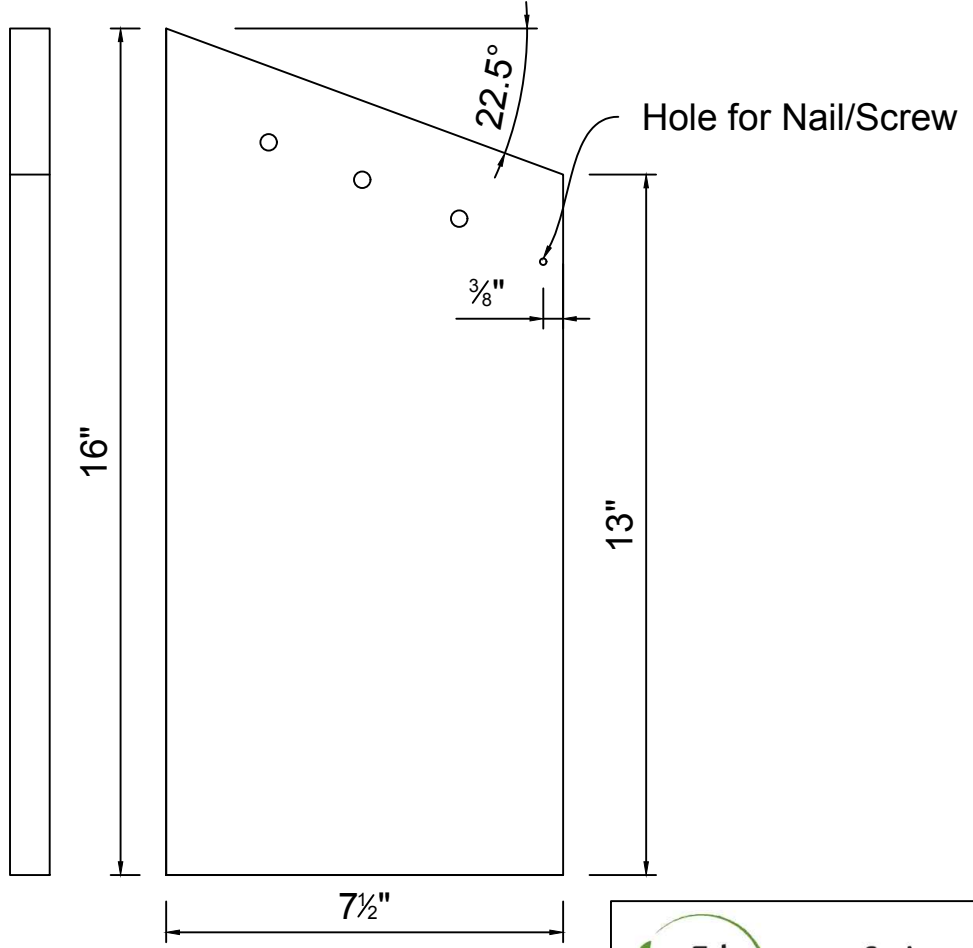


13"

2 1/2"

8 3/4"

② Sidewalls - x2



16"

22.5°

Hole for Nail/Screw

3/8"

13"

7 1/2"



Edmonton & Area Land Trust

[www.ealt.ca](http://www.ealt.ca)

Saw-Whet Owl Nest Box

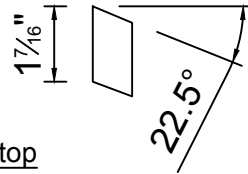
Notes:

- Material cut from  $\frac{3}{4}$ " board

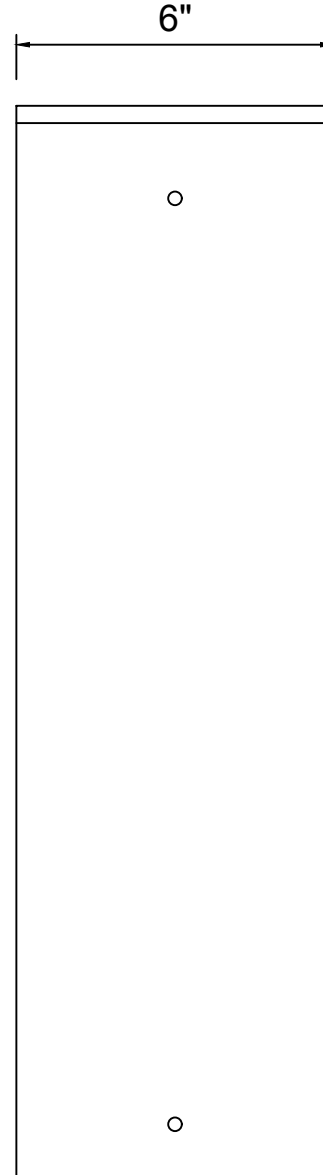
Materials

Page 2/3

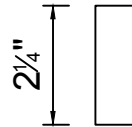
⑤ Top Strip



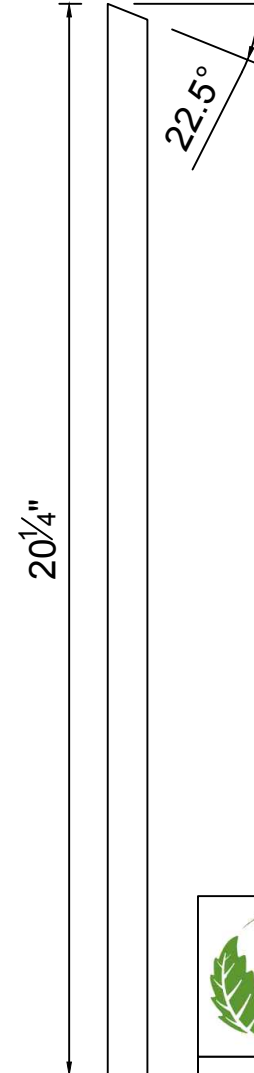
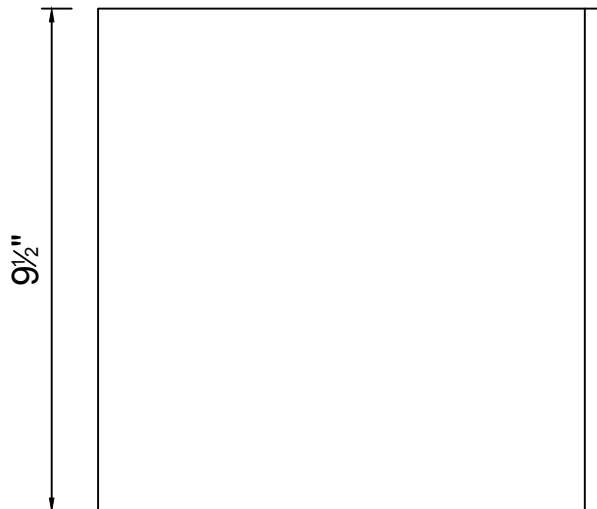
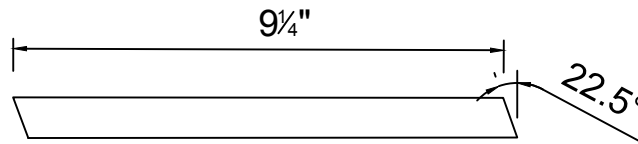
④ Back



⑦ ⑧ Bottom Strip and Stop



⑥ Roof



Saw-Whet Owl Nest Box

Notes:

- Material cut from 3/4" board.