

MS801

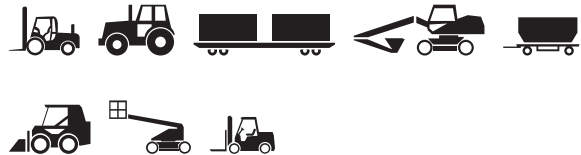
Bias Tires - Industrial Pneumatics

The aggressive, self-cleaning tread design & sidewall protection provides excellent drive comfort and traction.

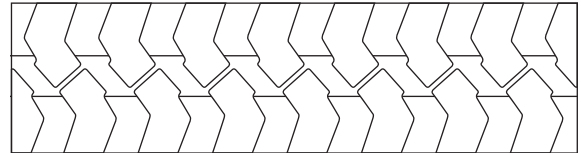
- Wear & cut resistant tread compound
- Self-cleaning
- Reduced vibration & increased stability
- Excellent grip and full flat profile
- Reinforced shoulder, sidewall and bead for enhanced stability
- Deep under tread for improved puncture resistance



Applications



Footprint



Size	PR	Rim	Type	Load Capacity (kg) up to 25 km/h		Pressure (KPa)	Unit	Tire Dimensions		
				Load Wheel	Steer Wheel			Tread Depth	Section Width	Overall Diameter
5.00-8	10	3.00D	TT	1415	1090	1000	in.	18/32	5.4	18.4
							mm	14	136	468
18x7-8	14	4.33R	TT	1885	1450	900	in.	21/32	6.8	18.3
							mm	17	172	465
18x7-8	16	4.33R	TT	2145	1650	1000	in.	21/32	6.8	18.3
							mm	17	172	465
6.00-9	10	4.00E	TT	1715	1320	850	in.	20/32	6.5	21.5
							mm	16	166	546
6.00-9	12	4.00E	TT	1885	1450	1000	in.	20/32	6.5	21.5
							mm	16	166	546
6.50-10	10	5.00F	TT	1950	1500	775	in.	21/32	7.0	23.4
							mm	17	179	595
6.50-10	12	5.00F	TT	2145	1650	900	in.	21/32	7.0	23.4
							mm	17	179	595
23x9-10	18	6.50F	TT	3160	2430	900	in.	24/32	9.0	23.0
							mm	19	228	584
23x9-10	20	6.50F	TT	3445	2650	1000	in.	24/32	9.0	23.0
							mm	19	228	584
7.00-12	12	5.00S	TT	2680	2060	850	in.	22/32	7.7	26.7
							mm	17	196	678
7.00-12	14	5.00S	TT	2755	2120	900	in.	22/32	7.7	26.7
							mm	17	196	678



Size	PR	Rim	Type	Load Capacity (kg) up to 25 km/h		Pressure (KPa)	Unit	Tire Dimensions		
				Load Wheel	Steer Wheel			Tread Depth	Section Width	Overall Diameter
23x10-12	16	8.00G	TT	3160	2430	800	in.	25/32	9.8	23.5
							mm	20	250	597
23x10-12	20	8.00G	TT	3770	2900	1000	in.	25/32	9.8	23.5
							mm	20	250	597
27x10-12	16	8.00G	TT	3900	3000	800	in.	29/32	10.0	26.9
							mm	23	254	682
27x10-12	18	8.00G	TT	4225	3250	900	in.	29/32	10.0	26.9
							mm	23	254	682
27x10-12	20	8.00G	TT	4615	3550	1000	in.	29/32	10.0	26.9
							mm	23	254	682
7.00-15	14	5.50	TT	3350	2575	930	in.	25/32	8.4	30.0
							mm	20	213	763
7.50-15	14	6.00	TT	3640	2800	930	in.	25/32	8.7	32.0
							mm	20	221	813
8.15-15 (28x9-15)	14	7.00	TT	3900	3000	1000	in.	23/32	8.7	27.9
							mm	18	220	708
8.25-15	14	6.50	TT	4225	3250	800	in.	24/32	9.6	33.4
							mm	19	245	848
250-15	18	7.50	TT	4745	3650	950	in.	25/32	9.8	28.9
							mm	20	250	735
250-15	20	7.50	TT	5040	3875	1000	in.	25/32	9.8	28.9
							mm	20	250	735
300-15	20	8.00	TT	6500	5000	900	in.	30/32	11.7	33.2
							mm	24	298	843
300-15	22	8.00	TT	6700	5150	1000	in.	30/32	11.7	33.2
							mm	24	298	843
9.00-20	14	7.00	TT	5850	4500	900	in.	38/32	10.3	40.9
							mm	30	262	1040
10.00-20	16	7.50	TT	6500	5000	900	in.	43/32	11.2	42.4
							mm	34	284	1078
11.00-20	18	8.00	TT	7800	6000	1000	in.	45/32	11.7	43.6
							mm	36	298	1108
12.00-20	20	8.50	TT	9230	7100	1000	in.	48/32	12.5	45.3
							mm	38	317	1150
12.00-20	24	8.50	TT	9490	7300	1030	in.	48/32	12.5	45.3
							mm	38	317	1150
12.00-24	20	8.50	TT	9750	9750	1000	in.	48/32	12.5	49.2
							mm	38	317	1250
14.00-24	28	10.00	TT	10000	10000	1030	in.	52/32	14.8	53.9
							mm	41	375	1368