

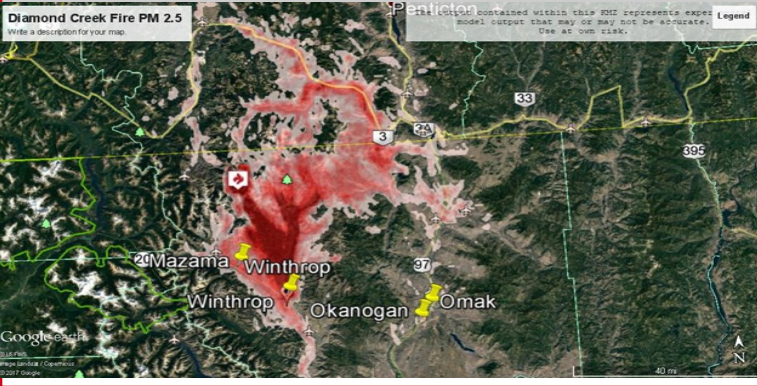


**CONFEDERATED TRIBES OF THE COLVILLE RESERVATION  
OFFICE OF ENVIRONMENTAL TRUST**

**PUBLIC NOTICE  
Air Quality Warning Update  
August 10 – 14, 2017**

Thursday, August 10, 2017

**We should expect some clearing of smoke starting noon on Saturday. This will be a slow process as the winds shift from out of the north to out of the south-west. This will prevent the smoke from Canada from impacting us.**



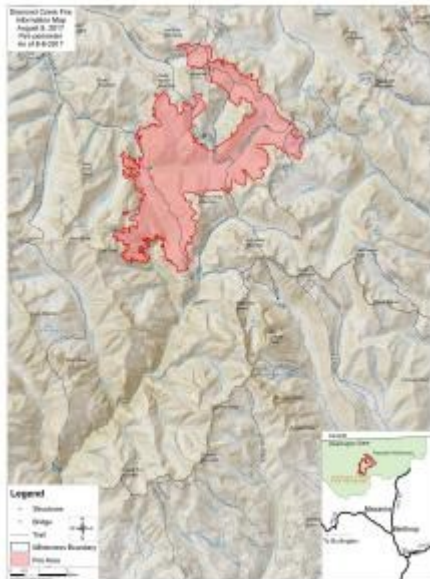
The Diamond Creek fire will be our local source of smoke for the Okanogan valley and west half of the Reservation and will be at lower concentrations that the previous two weeks.

A source of fire information including current status and perimeter maps <http://www.inciweb.org/state/49/>

The communities of Winthrop, Twisp, Okanogan, and Omak can expect to see some custom air quality information and predictions posted on the smoke blog and in their communities.

The Air Resource Advisors post their daily smoke predictions on the Washington State Smoke Blog—

<http://wasmoke.blogspot.com/>



**Predicted Air Quality for the Colville Reservation through Monday**

Unhealthy through Friday then tending toward Unhealthy for Sensitive Groups Saturday to Monday.

Concentrations vary by time of day and wind velocity

Many people are worried about their pet health related to high concentrations of smoke. Here are a few recommendations from WSU College of Veterinary Medicine:

- Keep your pet activities minimized, no ball chasing, jogging with you, long gallops on your horse
- Walk your pet during times of lower smoke concentrations,
- On Unhealthy days you might see symptoms similar to what people have
  - increased coughing, difficulty breathing
  - eye irritation and watering
  - nasal discharge, irritated throat
  - if your pet has health problems they might have chest pains, asthma-like symptoms, increased heart rate and fatigue

<b>AIR QUALITY INDEX (Short version)</b>	
<b>Levels of Health Concern</b>	<b>Levels of Health Concern</b>
<b>Unhealthy</b>	Everyone may begin to experience health effects; members of sensitive groups may experience more serious health effects.
<b>Very Unhealthy</b>	Health warnings of emergency conditions. The entire population is more likely to be affected.
<b>Hazardous</b>	Health alert: everyone may experience more serious health effects.

Other useful sources of information:

Wildfires Near Me - <https://wildfiresnearme.wfmrda.com/>

<https://www.geomac.gov/viewer/>

GEOMAC - <https://www.geomac.gov/viewer/>

**For Information contact:** Kris Ray, Air Quality Program Manager, Office 509-634-2418 or Cell 509-978-8025