

uknaqin
mætx^wu
snáýckstx
sǎ^wyǝip
nspilm
sənpǝilx
škwáxčənəx^w
šnpəšq^wáwšəx^w
šntiyátk^wəx^w
ščəlámxəx^w
wałwáma
palúšpam

Colville Tribal Services 2023



Executive Director

Cody Desautel, Executive Director (509) 634-2238

Divisions:

- Centralized Services
Matthew Pleasants, (509) 978-9449
- Employment & Education
Tammy James MBA, (509) 634-2777
- Health & Human Services
Casey Moore M.P.A., (509) 634-2437
- Natural Resources
Rebecca Hunt, (509) 634-2249
- Public Safety
Sabrina Desautel, (509) 634-2461

Departments:

- TERO
- Tribal Tribune
- Healthcare Compliance
- Veterans

Tribal Employment Rights Office (TERO)

Protect traditions and resources through enforcement, training and career development.

Services:

- Coordination and place qualified workers
- Trainings

Eligibility Guidelines:

Enrolled member of a federally recognized Tribe.

Contact

- Nespelem (509) 634-2716 | 21 Colville St.,
Nespelem, WA., 99155

Tribal Tribune

Provide accurate, comprehensive and timely information to the Colville Tribal members through a bi-monthly Tribal Tribune newspaper and on-line website.

Services:

- Newspaper subscription
- Advertise

Eligibility Guidelines:

Open to all

Contact

- Nespelem (509) 634-2223 | 17 Nespelem/San Poil
St., Nespelem, WA., 99155

Health Compliance

Compliance with all applicable federal and state laws affecting the delivery or payment of health care services, including those that prohibit fraud and abuse or waste of health care resources.

Services:

- Auditing and monitoring of healthcare services and/or operations

Contact

- [Nespelem](#) (509) 634-2611 | 21 Colville St., Nespelem, WA., 99155



Pino, Kamea. Root digging. 2022

Veterans

The CCT Veterans Resource Office will assist all eligible veterans with available benefits earned as a result of their time in their armed service to our country and the Colville Confederated Tribes within the Colville Indian Reservation.

Services:

- Wellness programs

Eligibility Guidelines:

Colville Tribal Veterans Member living on the reservation

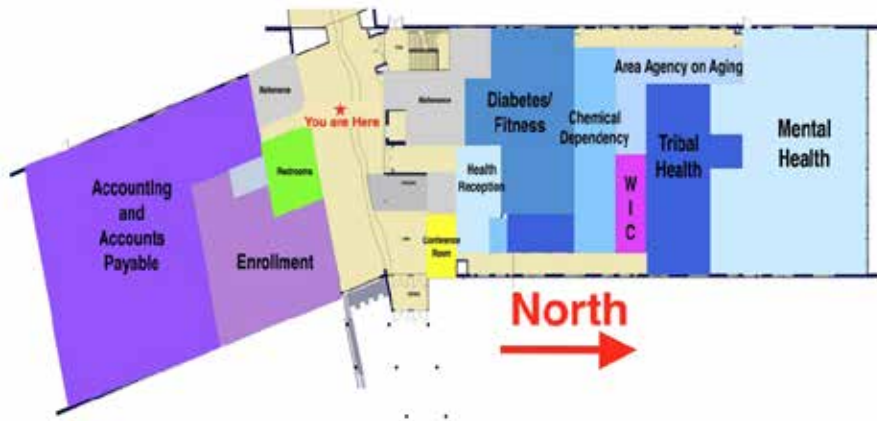
Contact

- [Nespelem](#) (509) 634-2755



Vaughn, Nanette. Job Fair. 2022

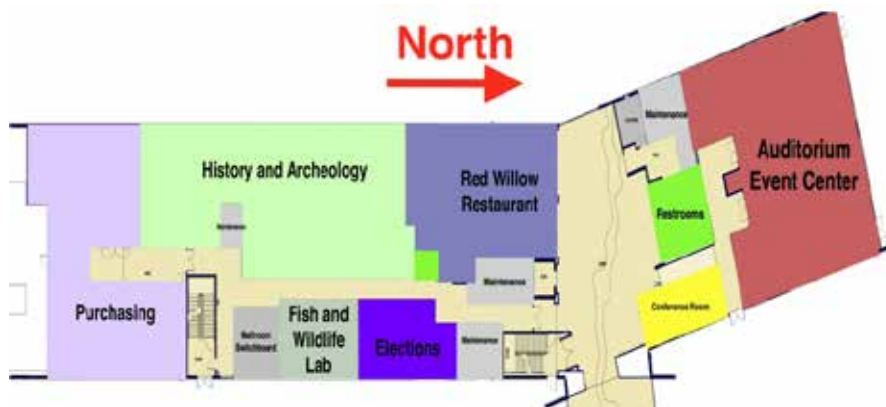
1st Floor East



2nd Floor West



1st Floor West



3rd Floor East



2nd Floor East



3rd Floor West



Employment and Education

Tammy James MBA, Employment and Education
Director (509) 634-2777

Programs :

- Community Centers
 - Boys & Girls Club
- Employment & Training
 - Childcare
- Head Start
- Higher Education
 - Library
- Language
- Paschal Sherman Indian School
- TANF
- Vocational Rehabilitation
- Wenatchee Valley College-Nespelem
- Youth Development
 - Curriculum Developer

Community Centers

Protect and enhance the quality of the lives of all
our members.

Services:

- Emergency Center
- Donation Sites
- Meetings
- Community Events
- Sports
- Computer Room (Keller and Inchelium)

Eligibility Guidelines:

Open to all

Contact

- Nespelem (509) 634-2370 | 400 Columbia River Rd., Nespelem, WA., 99155
- Omak (509) 422-7400 | 5th Ave E., Benton St., Omak, WA., 98841
- Inchelium (509) 634-7031 | 14 Community Ctr. Lp, Inchelium, WA., 99138
- Keller (509) 634-7336 | 11669 S. Highway 21 Keller, WA., 99140



Vaughn, Nanette. Teaching 2017

Employment & Training

The Employment & Training Program's goals are to reduce unemployment in tribal communities by creating and enhancing employment and educational opportunities, skill development, assisting tribal youth and adults with succeeding in the workforce, encouraging self-sufficiency, familiarizing individual participants with the world of work, and facilitating the creation of job opportunities, economic development, or related services.

Education and training activities are designed to enable participants to obtain, retain, or enhance employability as well as increase income and improve self-sufficiency.

Employment Services:

- Work Experience (WEX) Adult and Youth
- On-the Job Training (OJT)
- Economic Development Grant
- Workforce Innovation and Opportunity Act (WIOA) activities
- Assistance with resume and job application

Education Services may include tuition, books, fees, and related expenses.

Youth

- Tutoring services
- Academic enrichment
- School internships
- Vocational exploration
- Cultural education
- College and career exploration
- Running Start

Adult

- High School plus (HS+)
- Adult Basic Education
- Technical school
- Community College, state/city
- College or Tribal College

Supportive Services- includes financial assistance activities related to securing employment/education opportunities.

- General Assistance (Welfare Assistance)
- Basic Needs
- Transportation
- Gas Voucher
- Clothing Voucher
- Driver License Fees
- Professional License fees

Eligibility Guidelines:

- 18 years or older for adult programs
- 16-17 years of age for youth programs
- Colville Tribal member or member of a Federally
- Recognized Tribe
- Resides on or near the Colville Indian Reservation
- Be unemployed or underemployed

Contact:

- Nespelem (509) 634-2290 | 21 Colville Street, Nespelem, WA., 99155
- Omak (509) 634-7474 | 630 Benton St. Omak, WA., 98840
- Inchelium (509) 634-7069 | 39 Short Cut Road Inchelium, WA., 99138
- Keller (509) 634-7302 | 11665 South Highway 21 Keller, WA., 99140

Headstart

To develop and implement a shared vision of integrated comprehensive delivery system to families and children.

Services:

- Center Based Education Services for Children Ages 3-5
- Vision, Hearing, Hemoglobin, Developmental, and Behavioral Screenings to children birth to 5
- Assistance obtaining regular care providers for children and families and medical insurance
- Resource and Referral services for families from conception to age 5
- Supplies to families when needed such as diapers, wipes, lice treatments, etc.
- Transportation to children attending center based services
- Family support services to enrolled children to ensure school readiness
- Parenting classes
- Financial planning events
- Cultural events led by local artists
- Nutritional assessment and support to children and families
- Parent advocacy training
- Pregnant Mom
- 0-3 Services
- 3-5 Services
- Home Visits
- Wraparound childcare in Keller District
- Collaborative Individual Development Plans (IDP's) with TANF
- Opportunities for entry level employment
- Opportunities to volunteer to gain job experience

- Ongoing continuing education opportunities to staff
- Parent advocacy opportunities on HSCA, PC, and parent committee
- Parent/Teacher conferences
- Home Visits
- Family Engagement opportunities

Eligibility Guidelines:

- Resides on or near the Colville Indian Reservation
- Must be Tribally enrolled member or their families by elimination waiting list.

Contact

- Nespelem (509) 634-2298 | 19 Wenatchi St., Nespelem, WA., 99155
- Omak (509) 422-7707 | 169 North End Omak Lake Road, Omak Wa. 98841
- Inchelium (509) 722-7025 | 219 Moccasin Rest, Inchelium, WA., 99138
- Keller (509) 634-2760 | 4 Jim James Rd., Keller, WA., 99140
- Omak Early Head Start (509) 422-7792 | 25 A Mission Rd., Omak, WA., 9941



Vaughn, Nanette. Kamea gathering tule stalks 2023

Higher Education

The Higher Education Program is a vital education resource for Colville Tribal members who are seeking to enhance their education level at an accredited institution of post-secondary learning. The program is intended to provide partial financial grants and student support services for full-time and part-time students enrolled in accredited Certificate, Associates, Bachelor's, Master's, and Doctoral degree programs.

Services:

- FAFSA Seminars
- College Admissions Technical Advice
- Scholarship Outreach
- Employment Recruitment
- Student Grant Awards (CTEAP & Higher Education)
- Intervention Services (Probation/Suspension Student)
- Education Review Board
- Career Counseling
- College Internship Program
- Post-Secondary Graduation Honoring
 - Wool Blanket Gift to Honor Each Degree Attained
- Student Advising
- HS + Diploma Retrieval
- University/ College/ Technical networking
- Awards Pendleton Blankets to Colville Tribal members for each degree they've received

Eligibility Guidelines:

Enrolled Colville Tribal Member, Enrolled In An Accredited Program, Committed to Meeting Satisfactory Academic Progress, Submission of Complete Application & Supplemental

Documents.

Contact

- Nespelem (509) 634-2779 | 21 Colville St. Nespelem, WA., 99155
- Indian Agency-HWY 155 Nespelem, WA., 99155

Pascal Sherman Indian School (PSIS)

Empower students to be leaders of our language(s) land and environment for future generations.

Services:

- On campus dormitory for students
- Dorm staff
- Special education services
- Psychological services
- Speech and language therapy
- Language and culture program
- Athletics program

Eligibility Guidelines:

Enrolled Colville Tribal Member

Contact

- Omak (509) 422-7538 | 169 North End Omak Lake Rd., Omak, WA., 98841

Language

Language Department upholds the honor of providing resources to individuals who wish to expand their knowledge of their language through recordings and carefully preserving and telling the stories of our elders.

Services:

- The Language Department offers classes to learn the three languages used on the Colville Reservation
- Language dictionaries
- Translation services
- Curriculum
- Access to fluent speakers
- Language classes with 30+ people a month
- Language certification application members can fill out when they feel they are ready to take the next step from student to teacher

Eligibility Guidelines:

None, all people are welcome

Contact

- Nespelem (509) 634-2620 | 21 Colville St., Nespelem, WA., 99155
- Indian Agency-Hwy 155 Nespelem, WA., 99155
- Omak (509) 422-7406



Library Resource Center

To provide a central location, in district, so community members can access self-learning media, enjoy literary exploration, technology for personal business, and telehealth connectivity. The centers consistently work toward providing opportunities for community members to build their personal skill set from local knowledge keepers and artists by providing various classes within each of the resource centers.

Services:

- Media Borrowing (Books, DVD, Audiobooks, etc.)
- Computer/Phone/Fax/Video Conference Usage
- Youth, Adult, & Elder Programming
- Community Meeting/Gathering Space

Eligibility Guidelines:

Caters to Tribal Members and community members of the Colville Indian Reservation
Schedule Appointments To Ensure Availability

Contact

- Nespelem (509) 634-2791 | 12 Lakes Ave. Colville Indian Agency Campus, Nespelem, WA., 99155
- Keller (509) 634-2802 | 11673 S. Keller HWY 21 Keller, WA., 99140
- Inchelium (509) 722-7037 | 12 Community Loop Rd., Inchelium, WA., 99138



Images on left: Vaughn, Nanette. Chocolate root 2023
Image above: Vaughn, Nanette. Stick game Set 2023

Temporary Assistance for Needy Families (TANF)

Temporary Assistance for Needy Families services families in Okanogan, Ferry, Douglas, and Chelan Counties. The overriding goal of the Tribal TANF program is to assist families to become self-sufficient.

Support Services:

- Support Services
- WEX/OJT
- Education (Tuition, books, laptop)
- Clothing (work, children, pregnancy, boots)
- Rental assistance (1st, last & deposit)
- Utilities assistance
- Relocation (once in lifetime)
- Emergency food
- Emergency housing
- Beds (once in lifetime)
- School (activities, senior package, summer school, supplies)
- Incentives (workshops & school)
- Gas vouchers
- Vehicle (repairs, tires, liability insurance)
- Personal Hygiene
- Tools
- Infant/toddler (cribs, stroller, car seats, Diapers, formula)

Support Fees:

- Drivers License fees
- Birth certificate fees
- DNA testing fees
- Driver's education fees

Eligibility Guidelines:

- An Eligible Family Assistance Unit must include at least one enrolled Colville Tribal member – adult or child – if residence is within the Colville Service Area counties of Stevens, Lincoln or Grant.
- An Eligible Assistance Unit must include at least one member who is a member of a federally recognized tribe or Alaska Native, adult or child- if residing in Okanogan, Ferry, Douglas or Chelan Counties

Contact

- Nespelem (509) 634-2627 | 21 Colville St., Nespelem, WA., 99155
- Indian Agency-Hwy 155 Nespelem, WA., 99155
- Omak (509) 422-7403
- Inchelium (509) 722-7069
- Keller Office (509) 634-2199



Vaughn, Nanette. Omak Lake 2022

Vocational Rehabilitation

The Colville Tribal Vocational Rehabilitation Program provide culturally appropriate Vocational rehabilitation services to federally recognized tribal members with disabilities. Individuals who have a functional limitation and need assistance obtaining, maintaining, or regaining employment. Services are custom designed to fit each individuals needs.

Services:

- Education, training (Tuition, books, laptop) (usually shared with other departments or FAFSA)
- Resume, application and FAFSA assistance
- Career assessments (WOWI)
- Fees:
 - HS 21 fees
 - Drivers License fees
 - Certification testing fees
 - Birth certificate fees
 - Badge Fees
- Work Clothing (shoes, boots)
- Transportation Services
- Public Notary
- First Aid / CPR
- Assistive devices
- Office Accommodations
- Guidance and counseling and referrals etc to needed service such as on the job supports, or employment skill building/ development or support
- Physical/mental Assessments to determine eligibility and needs and barriers
- Other individual needs per client and disability if it is a barrier to employment because of their disability. Sometimes assessments will include recommendations

- Job Fairs
- Peacemakers meetings -referrals and areas of the reservation
- Newsletters, facebook, and tribal website for information and employment opportunities
- Culture Group once weekly Omak area
- Community Garden - traditional / Native plants, vegetables, and fruits - for work and community service hours
- In process of planning and building a sweat-house and smoker for customer use
- Free computer usage at two locations for customer use - Omak office and higher education area Nespelem

Eligibility Guidelines:

- Must reside on or near the Colville Indian reservation
- Enrolled member of a federally recognized tribe
- Have a physical or mental impairment with possible, assessments, evaluations, or treatment plans
- Willing to work on a plan that will help find suitable employment

Contact

- Nespelem (509) 634-2733 | 21 Colville St. Nespelem, WA., 99155
- Omak (509) 422-7578 | 1100 8th Ave. Omak, WA., 98841
- Inchelium (509) 722-7058 | 39 Short Cut Rd., Inchelium, WA., 99138
- Keller (509) 634-2733

Wenatchee Valley College-Nespelem

We aim to promote local postsecondary educational opportunities to Tribal members, students, and employees. We strive to provide timely and accurate admission and advisement information specific to Wenatchee Valley College. We also collaborate to coordinate basic skills and developmental education to support student transitions.

Services:

- Pre-Scheduled Quarterly WVC Classes at the Colville Indian Agency
- Tuition, Fees, and Books scholarships for scheduled classes
- Focus on developing employees in the Early Childhood Education, Language, and American Indian Indigenous Studies sectors
- HS+ Diploma Retrieval Program for Adults
- Classroom Meeting Spaces
- Class Technology Lab
- Zoom Classroom

Eligibility Guidelines:

- Tribal Members & Employees, Stakeholders Who Are Able to Physically Attend
- Timely Registration and Scholarship Application
- Commitment to Courses As Outlined

Contact

- College Admissions & Advisement Liaison (509) 634-2495 | 3rd Floor SW Lucy Covington Government Center
- HS+ Instructor & Admissions (509) 634-2780

Youth Development Program

To improve attendance & promote positive lifestyles among Native American school age students by improving educational and extracurricular activities to provide a higher probability of generational success.

Services:

- Incentives for Grades & Attendance
- JOM
- Miss CCT
- Youth Council and Ambassadors
- Youth Activities (Omak)
- Provide school supplies when needed to families
- Tutoring/ Academic and Behavior Support
- Court and Truancy Board Advocacy
- Curriculum Coordination
- Transportation to school/court
- E&T collaboration to get every GED/HS21+ Graduate a blanket

Eligibility Guidelines:

Must be an enrolled member of the Colville Tribes, descendant or member of a federally recognized tribe.

Contact

- Nespelem (509) 634-2476 | 21 Colville St. Nespelem WA., 99155
- Omak (509) 422-7573 | 630 Benton St. Omak, WA., 98840
- Keller (509) 634-2584 | 21 Colville. St. Nespelem, WA., 99155
- Inchelium (509) 978-9040 | 2 Hornet Ave. Inchelium, WA., 99138

Health and Human Services

Casey Moore M.P.A., Health and Human Services
Director (509) 634-2437

Programs :

- Area Agency on Aging (AAoA)
- Convalescent Center (CTCC)
- Behavioral Health
- Diabetes
- Health and Human Services
- LIHEAP
- Native Connections
- HHS Deputy Director
 - Substance Use Services
 - Community Health
 - Health Education
 - Mental Health Program
 - Speech Therapy
 - WIC
- SanPoil Treatment Center

Area Agency on Aging (AAoA)

Provide quality and high caliber supportive and nutritional services for senior participants, to promote a healthier lifestyle and increased socialization.

Services:

- Nutrition
- Information and Resources
- Legal Services
- Senior Employment Training
- Family Caregiver Support
- Kinship Caregiver Support
- Senior Farmers Market Nutrition
- Case Management
- Senior Health Insurance Benefits Assistance (SHIBA)

Eligibility Guidelines:

Serves all of the senior population 55 years of age and older on the Colville Reservation and some over 18 with a disability.

Contact

- Nespelem (509) 634-2759 | Lakes St., Nespelem, WA., 99155
- Nespelem Meal Site (509) 634-2769 | 330 10th Street, Nespelem, WA., 99155
- Keller Meal Site (509) 634-2803 | 7 Jim James Road, Keller, WA., 99140
- Inchelium Meal Site (509) 722-7074 | 26 Shortcut Road, Inchelium, WA., 99138

Behavioral Health

Offers a wide variety of counseling services to people of all ages with substance use issues (drug or alcohol), mental health concerns, or upsetting life problems. Our trained counselors can help with problems such as depression, family conflicts, anxiety, phobias, substance use, relationships, and adjustment to difficult life situations like grief and loss. Our experienced qualified staff are trained to deal with the most difficult problems with professionalism, sensitivity, and strict confidentiality.

Services:

- Mental Health (Counseling)
- Substance Use Services
- School-Based Mental Health
- Crisis Services

Eligibility Guidelines:

None, all people will be seen or referred to appropriate agency if they can't provide services

Contact

- [Nespelem](https://www.nespelem.com) (509) 634-2610



Vaughn, Nanette. Winds of Change Event 2023
2023 ©Colville Confederated Tribes ~ Employment & Education.

Child Support

Enhance the well-being and quality of life for children by assuring that assistance in obtaining support, including financial and medical, is available to children by locating parents and monitoring and enforcing child support obligations parents have to their children while sustaining Tribal values along with cultural and community integrity.

Services:

- Establishing parentage
- Access to genetic testing for paternity
- Ensuring all children receive support from parents including medical coverage
- Referrals to available resources
- Working with parents to ensure payments are made

Eligibility Guidelines:

Colville Tribal Enrolled member with minor child/children

Contact

- Toll Free Number 1-877-515-2544
- [Nespelem](https://www.nespelem.com) (509) 634-2030 | 21 Colville St., Nespelem, WA., 99155
- [Colville Indian Agency](https://www.colvilletribes.com) (509) 634-2030 | Hwy 155 Nespelem, WA., 99155
- [Omak](https://www.omak.com) (509) 422-7700 | 630 Benton, Omak, WA., 98841
- [Inchelium](https://www.inchelium.com) (509) 722-7081 | 3 Community Center Loop, Inchelium, WA., 99138

Children and Family Services

Protect the best interest of Indian Children and promote the stability and security of Indian Tribes and families by implementing the requirements established in the Colville Confederated tribal Juvenile Code, Indian Child Welfare Act (ICWA) and tribal customs, laws and policy.

Services:

- Case management
- Child abuse investigations
- Foster care licensing and recruitment
- Development and support of relative placement
- Adoption and guardianship support
- Advocating against child abuse and neglect
- Home studies
- Independent living skills for children ages 15-18
- Family reunification
- Intervention or monitoring ICWA cases involving Tribal members from other jurisdictions

Eligibility Guidelines:

The CFS program serves federally recognized Indian children and families residing within the interior boundaries of the reservation.

Contact

- Toll Free (800) 658-4535
- 24-hour intake line (866) END-HARM
- [Nespelem](mailto:Nespelem@colvilletribes.org) (509) 634-2764 | 21 Colville St., Nespelem, WA., 99155

Convalescent Center

Provide the highest quality of health care services while preserving the dignity of our residents. They are committed to providing our residents and family members with professional, compassionate services in recognition of the emotional, social, and spiritual needs of each individual resident in a home-like atmosphere to enhance their quality of life. They are dedicated to creating and maintaining a supportive work environment for our employees, and expanding services to meet the needs of our community.

Services:

- 24-hour nursing staff
- Consultant services as ordered by a physician
- Dietary consulting
- Therapies (physical, occupational, speech, swallowing)
- Wound and skin care
- Cultural activities
- Pharmacy services
- IV therapy
- Laundry
- Transportation services
- Respite care

Eligibility Guidelines:

A physician for admission, and payment source (DSHS or private)

Contact

- [Nespelem](mailto:Nespelem@colvilletribes.org) (509) 634-2878 | 25 Convalescent Blvd., Nespelem, WA., 99155

Diabetes Prevention and Management

Providing preventative education tools for people through advocacy of healthy lifestyles that honor mind, body and spirit.

Services:

- Education and counseling on diet and lifestyle to mitigate diabetes risk
- Monetary stipends for shoes
- Glasses (must be pre-approved through program)
- Dental work (must be pre-approved through program)

Eligibility Guidelines:

Must have current diabetes prescription, enrolled member of a federally recognized tribe, and be eligible for Indian Health Services

Contact

- Nespelem (509) 634-2970 | 28 Lakes St., Nespelem, WA., 99155



Vaughn, Nanette. Omak Lake 2023

2023 ©Colville Confederated Tribes ~ Employment & Education.

Food Distribution

Provide USDA nutritional food to low-income eligible households and the public.

Services:

- USDA nutritional food items (fresh fruits and vegetables)
- Dry goods,
- Canned good
- Frozen food
- When available personal care, hygiene products, and pet food

Eligibility Guidelines:

Low-income households residing on the Colville Reservation, any Federally recognized enrolled Tribal members on the North Half, and within a 15-mile radius of the Colville Reservation. The household can NOT be receiving SNAP benefits (food stamps) and use this service.

Contact

- Nespelem (509) 634-2767 | 7 Lakes St., Nespelem, WA., 99155



Vaughn, Nanette. Root Digging 2023

2023 ©Colville Confederated Tribes ~ Employment & Education.

Low-Income Home Energy Assistance Program (LIHEAP)

Provides energy assistance to Tribal households and LIHWAP provides water bill assistance to Tribal households.

Services:

- Energy crisis assistance
- Weatherization materials
- Senior heating supplemental fuel

Eligibility Guidelines:

Low-income eligible, have an enrolled Federally recognized Tribal member, over the age of 16 living in the home, within a 15-mile radius of the Colville Reservation.

Contact

• [Nespelem](#) (509) 634-2770 | 7 Lakes St., Nespelem, WA., 99155



Vaughn, Nanette. Smudge 2023

2023 ©Colville Confederated Tribes ~ Employment & Education.

Native Connection Suicide Prevention and Awareness

Prevent suicide and substance misuse, reduce the impact of trauma, and promote mental health among American Indian/Alaska Native (AI/AN) youth through the age of 24 years. Native Connections is intended to reduce the impact of mental and substance use disorders, foster culturally responsive models that reduce and respond to the impact of trauma in AI/AN communities, and allow AI/AN communities to facilitate collaboration among agencies to support youth as they transition into adulthood.

Services:

- Education
- Outreach
- Referrals
- Presentations
- Suicide data surveillance

Eligibility Guidelines:

Enrolled Colville tribal member

Contact

• [Nespelem](#) (509) 634-2549 | 21 Colville St., Nespelem, WA., 99155



Vaughn, Nanette. Sun Rise 2023

2023 ©Colville Confederated Tribes ~ Employment & Education.

San Poil Treatment Center

The San Poil Treatment Center is a 46-bed facility located on the Colville Reservation in Keller, Washington. Our mission is to provide the highest quality of evidence-based residential substance abuse treatment that supports, celebrates and integrates the traditional healing practices of Indigenous people. We are focused on helping clients find their way back to their families and their culture.

Eligibility:

Services:

- Substance abuse treatment center

Eligibility Guidelines:

Do not need to be a Tribal member, depends on capacity of facility and ability to pay; contact admission for details.

Contact

- Keller (509) 634-2050 | 11614 Highway 21 South, Keller, WA., 99140



Vaughn, Nanette. Future 2023
2023 ©Colville Confederated Tribes ~ Employment & Education.

Social Services

Promote the safety, financial security, and social health of our Indian people through Adult Protective Services of elder and vulnerable adults, Individuals Indian Monies Accounts, High School Seniors Expense Accounts, Transitioning Services, and Victims Advocacy.

Services:

- Adult Protective Services
- Supervised Individual Indian Money (IIM) account
- Graduating Senior Assistance
- Transitioning services
- Victims advocacy

Eligibility Guidelines:

Enrolled Colville Tribal Member

Contact

- Nespelem (509) 634-2397 | 21 Colville St., Nespelem, WA., 99155
- Inchelium (509) 722-7023 | 39 Short Cut Rd., Inchelium, WA., 99138
- Omak (509) 422-7713 | 507 Benton St., Omak, WA., 98841



Vaughn, Nanette. IT planning 2023
2023 ©Colville Confederated Tribes ~ Employment & Education.

Tribal Health

Assisting Tribal members with health issue management.

Services:

- Health education
- Medication monitoring
- Home visits
- Transport
- Wellness checks
- Speech and Language Therapy
- Health education on topics like tobacco cessation, problem gambling, etc.

Eligibility Guidelines:

Individuals IHS-eligible

Contact

- Nespelem (509) 634-2610



Vaughn, Nanette. Play Ball 2023

2023 ©Colville Confederated Tribes ~ Employment & Education.

Women, Infants, and Children (WIC)

Helps improve the health of mothers and children through nutrition education, breastfeeding support, healthy foods, and health screenings/referrals including measuring growth, height, weight, and blood iron levels;

Services:

- Basic food program
- Identification of health risks
- Immunization screening
- Medical care and health insurance
- Temporary Assistance to Needy Families (TANF)
- Family Planning Clinics

Eligibility Guidelines:

Pregnant, post-partum, or recently adopted/fostering; income-based depending on family size; service area covers all of the Colville Reservation (Keller, Inchelium, Omak and Nespelem) plus Grand Coulee; do not have to be a Tribal member to receive services

Contact

- Nespelem (509) 634-2391 | 21 Colville St., Nespelem, WA., 99155

2023 ©Colville Confederated Tribes ~ Employment & Education.

Centralized Services

Matthew Pleasants, Centralized Services Director
(509) 978-9449

Programs :

- Accounting
- Archives & Records
- Building Operations
- CBC Support Staff
- Enrollment
- Elections
- Facilities Management
- Fleet
- Human Resources
- Information Technology
- Legal Services
- Property & Casualty
- Planning
- Public Works
- Purchasing

Accounting

To help protect, enhance, and maintain financial stability for the Colville Tribe with excellent customer service and communication with all of our customers.

Services:

- Dispersal of funds

Eligibility Guidelines:

Open to Colville Tribal members and employees.

Contact

- Nespelem (509) 634-2293 | 21 Colville St.,
Nespelem, WA., 99155

Archives & Records

Maintain, preserve, protect and secure all deposited archive records on behalf of the Colville Tribes.

Services:

- Study or research project permit

Eligibility Guidelines:

Open to all

Contact

- Nespelem (509) 634-2148 | 21 Colville St.,
Nespelem, WA., 99155

Building Operations

Develop and maintain an excellent Nespelem campus facility, providing a professional work environment for employees, vendors, guests, and the Colville membership, enhancing their work, learning opportunities and spiritual growth consistent with the Colville Tribes' rich history and traditions.

Eligibility Guidelines:

Open to all

Contact

• [Nespelem](#) (509) 634-2200 | 21 Colville St., Nespelem, WA., 99155

CBC Support Staff

Maintain, preserve, protect and secure all deposited archive records on behalf of the Colville Tribes.

Services:

- Study or research project permit

Eligibility Guidelines:

Open to all

Contact

• [Nespelem](#) (509) 634-2148 | 21 Colville St., Nespelem, WA., 99155

Enrollment

Processes enrollment applications for membership and descendency in the Colville Tribes. Provides proof of enrollment and issues IDs and enhanced IDs. Wake & Burial financial assistance and processes all tribal disbursements. The office is responsible for all data pertaining to the enrollment of an individual into the Tribe.

Services:

- Enrollment
- Family history research
- Wake and burial services
- Record services
- Tribal Identification cards
- Elections

Eligibility Guidelines:

Enrolled Colville Tribal Member

Contact

• [Nespelem](#) (509) 634-2830 | 21 Colville St., Nespelem, WA., 99155



Vaughn, Nanette. Employee App. Week 2023

2023 ©Colville Confederated Tribes ~ Employment & Education.

2023 ©Colville Confederated Tribes ~ Employment & Education.

Elections

Ensure tribal elections is conducted in a credible and a professional environment. Promote voter registration to allow each tribal member their right to vote.

Contact

• Nespelem (509) 634-1439 | 21 Colville St., Nespelem, WA., 99155

Fleet Management

Fleet Management Services provides daily and monthly transportation to Tribal departments and employees. Fleet is the GSA point of contact and provides a Courier Express service to all programs.

Contact

• Nespelem (509) 634-2193 | 21 Colville St., Nespelem, WA., 99155

Human Recourses

HR is responsible for employee relations and recruitment

Services:

- Job placement
- Job recruitment

Eligibility Guidelines:

Open to all looking for a position withe the Colville Tribes organization

Contact

• Nespelem (509) 634-2842 | 21 Colville St., Nespelem, WA., 99155

Information Technology (IT)

Information Technology in conjunction with Enrollment creates a loved ones celebration of life/ funeral cards.

Services:

- Funeral Cards

Eligibility Guidelines:

Enrolled Colville Tribal Member and Family

Contact

• Nespelem (509) 634-2300 | 21 Colville St., Nespelem, WA., 99155



Vaughn, Nanette. Employee App. Day 2023

Legal Services

Provides high quality, professional legal assistance to Colville Tribal members, specifically children, the elderly, the disabled and the indigent, in ways that will bring strength and health to our culture and all members of our community.

Services:

- Consistent with established priorities
- Assists with SSI/ SSDI claims
- Wills
- Advance directives
- School discipline and special education matters
- Specific type of civil right claim
- Provides advice, information, and referrals on a wide array of civil matters (time and resources permit)

Eligibility Guidelines:

Enrolled Colville Tribal Member

Contact

- [Nespelem](#) (509) 634-2406 | 21 Colville St., Nespelem, WA., 99155



Property & Casualty

Property & Casualty is dedicated to providing an extensive range of insurance to honor the programs of the Colville Confederated Tribes. We abide by the highest ethical standards when handling all levels of claims for the Colville Confederated Tribes.

Contact

- [Nespelem](#) (509) 634-2146 | 21 Colville St., Nespelem, WA., 99155

Planning

CCT Planning addresses a myriad of issues within the Colville Indian Reservation; the development of a Comprehensive Plan, Community and Economic Development Strategies (CEDS), the land use development process (permitting and zoning), and works with other tribal departments to develop federal, state and local grant proposals.

Services:

- Planning
- Grant writing
- Legislative database

Eligibility Guidelines:

Must be within the Colville Indian Reservation

Contact

- [Nespelem](#) (509) 634-2570 | 21 Colville St., Nespelem, WA., 99155

Public Works

Repair and maintenance of all Tribal facilities and grounds, trailer courts, and the July Celebration Grounds. Issue building permits, provides both residential and commercial building inspection services, enforces building codes for all new construction. Provide grave preparation services for deceased Tribal members and spouses.

Services:

- Water
- Waste water operations
- Sanitations facilities
- Construction
- Solid waste program

Eligibility Guidelines:

Eligibility varies depending on services

Contact

- [Nespelem](#) (509) 631-0716



Vaughn, Nanette. You can't see me 2023
2023 ©Colville Confederated Tribes ~ Employment & Education.

Purchasing

Provide services adding value and improvement in support of the Colville Tribes reservation. Striving to become an more acknowledged leader among tribal service providers, recognized for innovative, high quality, and cost effective approaches to meeting and exceeding our tribal programs expectations.

Contact

- [Nespelem](#) (509) 634-2747 | 21 Colville St., Nespelem, WA., 99155



Vaughn, Nanette. Employee App. Day 2023
2023 ©Colville Confederated Tribes ~ Employment & Education.

Natural Resources

Rebecca Hunt, Natural Resources Director (509)
634-2249

Programs :

- Environmental Trust
- DOT
- Fish & Wildlife
- Forestry
- GIS/RIA
- History
- Lands, Titles, and Records (LTRO)
- Mt. Tolman Fire Control
- Parks & Recreation
- Range
- Realty
- IRMP
- Greenhouse
- 3P

Environmental Trust

Achieve and maintain a healthy environment with functioning ecological systems including biodiversity, clean water, clean air, and healthy soils required to support the plants and animals needed by subsistence users which in turn support the traditional values of the Colville Tribes.

Contact

- Nespelem (509) 634-2426 | 21 Colville St., Nespelem, WA., 99155

Fish & Wildlife

Maintain and protect viable populations of native and desired non-native species of fish and wildlife, and their supporting habitats, while providing sufficient numbers to meet the cultural, subsistence, recreational, and economic needs of the tribal membership.

Services:

- Fishing & Hunting Licenses
- Boat Launch permits
- Camping permit
- Trapping permits
- Hound Hunter permits & Hound registration

Eligibility Guidelines:

Eligibility varies depending on License and or permits

Contact

- Nespelem (509) 634-2110 | 10 Lakes St., Nespelem, WA., 99155
- <https://colville.nagfa.net/online>

Forestry

Forestry and Wildland Fire Management is to carry out the federal trust responsibility for protection and management of forest resources for the beneficial use of Tribes and Indian owners.

Contact

• Nespelem (509) 634-2333 | 21 Colville St., Nespelem, WA., 99155

GIS/RIA

Provide Natural Resource program with centralized and updated projects level GIS databases.

Contact

• Nespelem (509) 634-2360 | 21 Colville St., Nespelem, WA., 99155

History & Archaeology

The History & Archaeology Program specializes in Columbia Plateau cultural resource management including archeology, ethnography, history, botany, collections rehabilitation and management, and NAGPRA.

Services:

- Historic Background Research
- Archival Research
- Records Search
- Literature Review
- Oral History Review
- Data Compilation
- TCP Recordation
- Ethnographic Interview
- Oral History Transcription

- Historic Context Development
- Phase I Cultural Resource Inventory
- Reconnaissance Archaeological Survey
- Archaeological Excavation - small scale assessments to data recovery
- Archaeological Monitoring
- Remote Sensing
- Resource Mapping - ArcGIS
- Artifact Analysis - Pre-contact and historic Period
- Context Statements
- Mitigation Monitoring
- Treatment Plan
- Mitigation Plan
- Management Plan
- Programmatic Agreement
- Memorandum of Agreement, and more.

Eligibility Guidelines:

Eligibility varies depending on services

Contact

• Nespelem (509) 634-2693 | 21 Colville St., Nespelem, WA., 99155



Batten, Abe. Gov. Building 2018

Land, Titles, and Records

Maintain accurate land titles; identify, correct and maintain 6,500 tracts within and outside of the Colville Reservation boundary. To assure the recording of title and legal documents in a timely manner.

Contact

• Nespelem (509) 634-2365 | 21 Colville St., Nespelem, WA., 99155

Mt. Tolman Fire Center

Qualified personal and equipment to respond to a wildfire. Life and property values will be protected from damaging wildfires.

Services:

- Prescribed fires
- Hazard fuels reduction wildland urban interface
- Monitoring
- Dispatch
- Warehouse
- Mechanics
- Fire Prevention and lookouts
- Wildland fire suppression
- Aviation management
- Engines and operators

Eligibility Guidelines:

All people within the boundaries of the Colville Reservation.

Contact

• Keller (509) 634-3100 | 90 Mount Tolman Rd., Keller, WA., 99140

Parks & Recreation

Plan, manage and enhance campgrounds, recreational activities, cultural and traditional resources on the reservation while providing for the safety and health of the general public when those resources are being used.

Services:

- Recreation
- Keller Park, San Poil River
- Reynolds Resort
- Lake Rufus Woods
- Rufus Woods RV

Eligibility Guidelines:

Non Colville tribal members are required to obtain a reservation Use Pass, Camping Permit, and Boat Launch Permit.

Contact

• Nespelem (509) 634-3145 | 21 Colville St., Nespelem, WA., 99155

Range

Provide sustainable desired plant communities for overall rangeland health and to enhance and maintain a diversity of rangeland conditions that benefit tribal members and natural resource programs.

Contact

• Nespelem (509) 634-2319 | 21 Colville St., Nespelem, WA., 99155

Real Estate Services

Management and administration of programs in the areas of Land Tenure & Management, Land Acquisitions & Disposal, Leasing, Rights of Way, Easements, Fee to Trust & Trust to Fee Conversions, Compliance and other land issues.

Services:

- Answer questions from landowners about trust lands, tribal lands, allotments
- MAPs
- Title status report
- Leasing
- Rights of way
- Negotiation of sales, gifts, exchange, fee to trust
- Customer service
- Surveys
- Appraisals
- Environmental site assessments
- BID advertisements

Eligibility Guidelines:

Services is open to the public. Each application and/or situation is handled on a case-by-case basis. The regulatory authority will guide our services to each customer, client, landowner, stakeholder, and shareholder.

Contact

- [Nespelem](#) (509) 634-2343 | 21 Colville St., Nespelem, WA., 99155

Integrated Resource Management Plan (IRMP)

Integrated resource management is an approach to reservation resource management that takes a whole system approaching, viewing all resources (natural, social, cultural and economic) as being interrelated in such a manner that management actions directed at one resource also affect others. As such, the integrated resource management approach accommodates the management of natural resources that involve multiple and sometimes, conflicting uses. The goal of the IRMP is to balance those multiple uses in a way that ensures the long term sustainability of all the natural resources of the Colville Reservation.

Contact

- [Nespelem](#) (509) 634-2323 | 21 Colville St., Nespelem, WA., 99155

Greenhouse

Protect and enhance Colville Tribal economics, interests, resources, sovereignty and quality of life. Grows native and culturally important plants. The Tribal Greenhouse produces viable products in support of Natural Resource programs for long term sustainable land management.

Contact

- [Nespelem](#) (509) 634-2344 | 21 Colville St., Nespelem, WA., 99155

Department of Transportation (DOT)

Provide safe, efficient, and reliable transportation and public road access to and within the Colville Indian Reservation and local communities for tribal members, visitors, recreational, resource users and others while contributing to community and economic development, self-determination and tribal member employment.

Services:

- Elder Snow Plow Services

Eligibility Guidelines:

- Eligibility varies depending on services

Contact

- [Nespelem](#) (509) 634-2540 | 21 Colville St., Nespelem, WA., 99155

Transit & Inchelium Ferry

Provide safe transportation from location to location.

Services:

- Inchelium-Gifford Ferry
- Bus Route for Omak, Nespelem, Coulee Dam

Eligibility Guidelines:

Open to public, summer and winter hours apply.

Contact

- [Inchelium](#) (509) 722-7083 | Po Box 153, Inchelium, WA., 99138

WSU Extension (3P)

WSU Extension provides research-based, outreach education on the Colville Reservation in the following program areas: Agriculture & Natural Resources, Family & Consumer Sciences and 4-H Positive Youth Development – Traditional 4-H Clubs.

Contact

- [Nespelem](#) (509) 634-2305



Vaughn, Nanette. Gov. Building 2021
Vaughn, Nanette. Bitter Toot 2023



2023 ©Colville Confederated Tribes ~ Employment & Education.

Public Safety Services

Sabrina Desautel, Public Safety Director
(509) 634-2461

Programs :

- Public Safety Grants Management
- Corrections
- EMS, Fire & Rescue
- Emergency Management
- Probation
- Peacemaker Circle
- Tribal occupational Safety & Health Administration (TOSHA)

Public Safety Grants Management

Provides leadership, coordination, and advanced proposal writing for grant development opportunities that support organizational opportunities, goals, priorities, and research. Works collaboratively with executives and staff, external organizations, and individuals to identify external funding opportunities that align with the Tribe's mission, vision, and strategic plan.

Contact

• [Nespelem](#) (509) 634-2081 | 21 Colville St.,
Nespelem, WA., 99155



Vaughn, Nanette. Falls 2023

Corrections Facility

Provide a safe, secure, rehabilitative, and culturally relevant environment for those individuals who are in this Colville Tribal facility to ensure a positive transition and re-entry into the community.

Services:

- Learn basic literacy skills
- Experience traditional native practices
- Referral to counselors to develop coping skills
- Enable personal growth to make positive changes
- Trustee that provides hands on work details to enhance employment potential
- Early release potential
- Religious and/or bible study
- Group interactions
- Talking Circle
- Tribes Language Program

Eligibility Guidelines:

Federally recognized Tribal Member

Contact

- Nespelem (509) 634-7352 | 44 Schoolhouse Loop Rd., Nespelem, WA., 99155

Peacemaker Circle

Provides Plateau traditional and cultural healing practices to the membership of the Colville Confederated Tribe and to preserve and protect the cultural, customary, and traditional healing practices.

Contact

- Nespelem (509) 634-2075 | 21 Colville St., Nespelem, WA., 99155

EMS, Fire & Rescue

Minimize the loss of life and property, protect our natural resources to the best of our ability, and to assist other emergency agencies when called upon.

Services:

- Emergency
- Medical
- Structural fire, wildland fire, within the boundaries of the Colville Reservation
- Ambulance to area hospitals and clinics
- EMS services at Tribal and Community functions
- Training on fires and fire equipment
- assist other departments with various functions

Eligibility Guidelines:

All people within the boundaries of the Colville Reservation.

Contact

- Keller (509) 634-3100 | 90 Mount Tolman Rd., Keller, WA., 99140

Tribal occupational Safety & Health (TOSHA)

Responsible for enforcing a safe, healthy, and clean work Environment for not only Colville Tribal employees, but also vendors and contractors that are doing work on tribal lands.

Contact

- Nespelem (509) 634-2014 | 21 Colville St., Nespelem, WA., 99155

Emergency Management

Provide support during disasters, Emergency Planning, Training, Hazard and Threat Mitigation, and Risk Assessments. We have many plans currently being updated and or revised that will allow us to apply for Federal grants to help us keep our people and lands safe. Also help other surrounding counties in times of emergency.

Services:

- Emergency preparedness education
- Emergency response coordination
- Public Alerts
- Emergency Operations Center
- Providing community members with sheltering and essential needs
- Provide portable generators, portable air-conditioners, and/or air purifiers to community members in need
- Provide transportation to community members when an evacuation occurs
- Assist FEMA/WA State EMD with grants
- Update Emergency Management Plan, mitigate plans
- Respond, and recover from natural and manmade disasters/emergencies

Eligibility Guidelines:

All community members living within the boundaries of the Colville Reservation.

Contact

• [Nespelem](#) (509) 634-2134 | 21 Colville St., Nespelem, WA., 99155

Probation

Assist offenders with court ordered supervision that enhances their accountability towards successful completion of the conditions of probation as well as encouraging smart decisions towards leading healthy, productive and crime free lives.

Services:

- Provide swift and certain sanctions to Probationers who are not in compliance with Court demands and Probation regulations
- Networking with Tribal Resources
- Department makes referrals to local and region wide service programs
- Electronic Home Monitoring
- SCRAM (alcohol monitoring) bracelets

Eligibility Guidelines:

Federally Recognized Tribal Member in and around the Colville Reservation, including descendants.

Contact

• [Nespelem](#) (509) 634-2480 | 44 Schoolhouse Loop Rd., Nespelem, WA., 99155



Vaughn, Nanette. Trunk-or-Treat 2022

Programs outside the organizational Chart

Programs :

- Indian Health Services IHS
- Indian Housing Authority (IHA)

Indian Health Services (IHS)

To enhance the health of Federally Recognized Tribal members health.

Services:

- Health Center
- Dental
- Optometry
- Pharmacy

Eligibility Guidelines:

Enrolled member of a Federally Recognized Tribe.

Contact

- [Nespelem](#) (509) 634-2913 | 29 Nespelem/Sandpoil St., Nespelem, WA., 99155
- [Omak](#) (509) 422-7416 | 617 Benton St., Omak, WA., 98841

Indian Housing Authority (IHA)

The mission of the Colville Indian Housing Authority is to treat all of our families with respect and dignity as we provide safe, sanitary, and decent housing for federally recognized Native Americans with a preference for Colville tribal members, and to provide housing assistance and opportunities to meet the diverse needs of the members as they become self-sufficient. Approved by BOC, March 19, 2015

Services:

- Housing

Eligibility Guidelines:

Enrolled member of a Federally Recognized Tribe, preference for Colville Tribal Members.

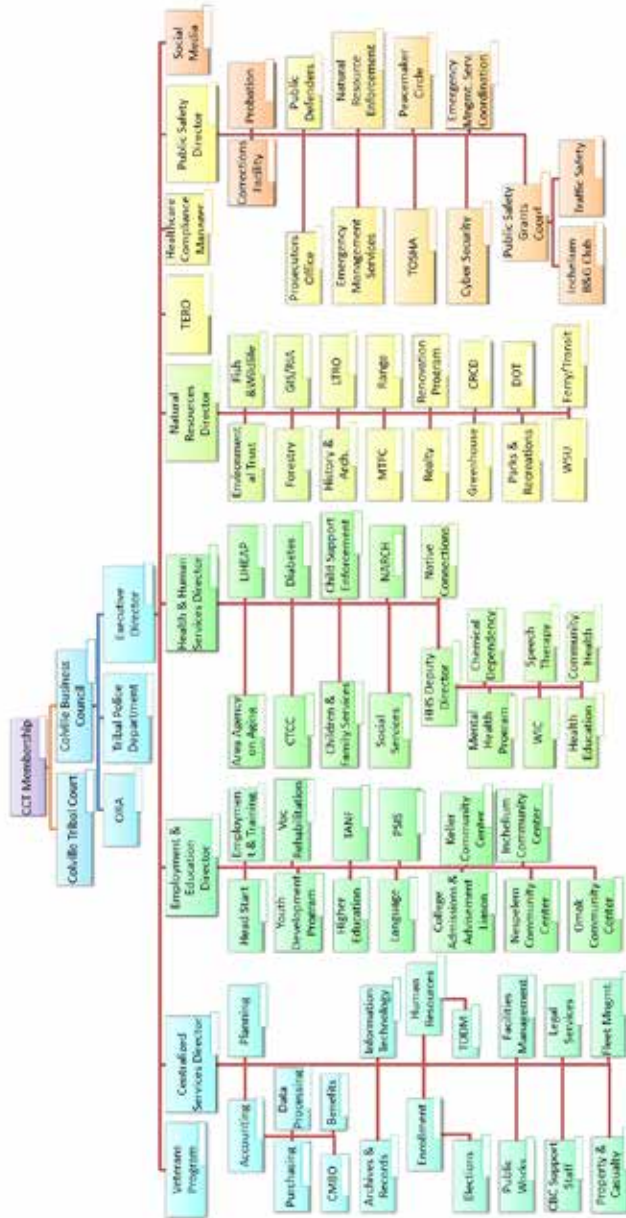
Contact

- [Nespelem](#) (509) 634-2160 | 42 Convalescent Blvd., Nespelem, WA., 99155



Vaughn, Nanette. Root Digging 2023

CONFEDERATED TRIBES OF THE COLVILLE RESERVATION ORGANIZATIONAL CHART



Colville Tribal Organization



©Colville Confederated Tribes 2023
Employment & Education
Vaughn, Nanette. Photographer, layout & design

Thank you to all that sent
information to make this possible.

