

# eNEWSLETTER

June 2017 No. 425

25-27 Walker Street, North Sydney NSW 2060

eMail: [lavender@royalart.com.au](mailto:lavender@royalart.com.au) Website: [www.royalart.com.au](http://www.royalart.com.au)

Tel: (02) 9955 5752 Fax: (02) 9925 0064



Australia Post Publication No: 241613/00090

---

## From the desk of the President - John Perkins FRAS

I extend my congratulations to the members who were nominated by the Fellows and elevated at the last Council Meeting Sarah McConnell from Exhibiting to Associate, Sue Sharpe and Bruce Harkness from Associate to Fellow.

Our "Walk on the Wild Side" Exhibition is currently showing, a good standard of works were submitted and I extend my thanks to those members who supported this Exhibition. The opening of this exhibition was not particularly well supported. Unfortunately we clashed with Hunters Hill Exhibition. Our numbers were boosted by the attendance of 12 members of the Concord Golf Club who accepted my invitation to attend and support our fellow member Mr Len Bleasel, the former chairman of Taronga Zoo, who opened this Exhibition. Our members were particularly entertained by Len's talk and the changes he made to the zoo during his 19 years as Chairman. He also kindly presented to me a donation to the Society which was greatly appreciated.

I met with the representative of "Yaralla House" and "Estate" at Concord with a view to a possible exhibition and painting weekend to coincide with their Gala Day on 10 September. Whilst the venue offered was not completely suitable for an exhibition, the grounds are extremely picturesque and would be ideal for plein air painting. We will keep you informed and anyone interested may wish to leave their details with Christine.

Our next exhibition "Escape Winter" is approaching quickly and I hope you are all busy preparing so we can make this another enjoyable exhibition.

**A reminder to all members, Fellows, Associates and Exhibiting, to please support the Ballot Fundraiser by donating painting/s as soon as possible.**

Happy Painting.

---

## From the Archives – by Secretary Christine Feher

The Royal Art Society has been an institution remarkable for the liveliness and durability of its members, probably because they were infused with a passion for art and a determination to practise it in the Australian context. Men and women of vision who were also forceful characters established the Society and kept it alive – and often kicking – in the midst of great difficulties and, what was worse, indifference.

The names of those who exhibited with the Society in its first 50 years include **Elioth Gruner, James Crisp, Penleigh Boyd, E. Phillips Fox, Rupert Bunny, Fred McCubbin, Max Meldrum, Squire Morgan, R. Eldershaw** as well as the group identified by camps at Eaglemont and Sirius Cove – **Conder, Roberts, Streeton with Hans Heysen** and other painters who between them captured the Archibald, Sulman and Wynne Prizes with amazing regularity. Its members served on the Commonwealth Art Advisory Board. Many of the Fellows taught, in the Society's school and privately, and their pupils are among those whose works are in the National Gallery in Canberra collection, in all State Galleries, in the Regional Galleries of Victoria and NSW and in many cases, in galleries abroad.

## “Walk on the Wild Side” Exhibition Opening



Guest Opener Les Bleasel AM -  
CEO Taronga Zoo for 9 years



Deb Morgan, Greg Hansell, Cilla Davis, Lyn Burns  
and Chris Feher



John Perkins, Sherry and Amon Chahl and Susie Devenport



Jeannette Korduba and Helen Alajajian



Bill and Diana  
Bilderbeck-Frost



Roger Robinson and Don Talintyre  
enjoying the night

**Members' News:** Please remember to forward all news items and requests to the Editor and not to our Secretary Christine at the Society

**Congratulations to:**

**Helen Bailey** ARAS – Commended – Camden Art Prize Works on Paper section

**Wendy Fare** RAS – VH/Commended and H/Commended – Drummoyne Art Show – Portrait section and H/Commended in the Lane Cove Exhibition

**Gaye Shield** RAS – 1<sup>st</sup> in oils – Dobell Festival Wangi Wangi

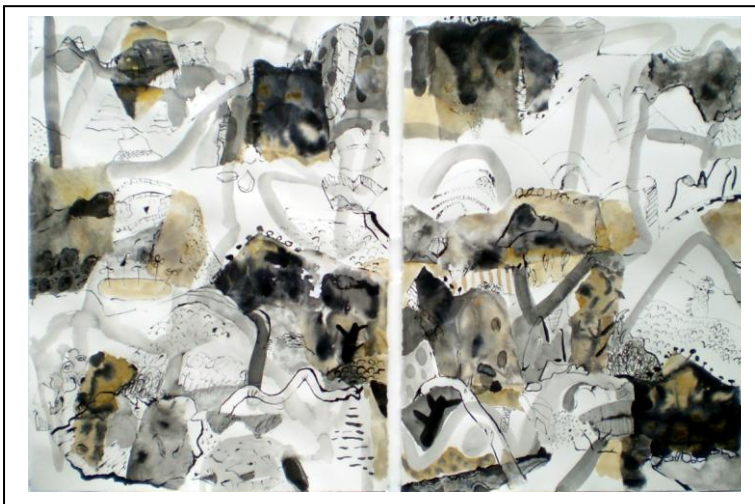
**Diana Robinson** RAS – Winner Ewart Art Prize 2017

**Don Talintyre** FRAS – H/Commended – Open section – Camden Art Prize

**Julie Simmons** ARAS – 1st in Watercolour – Tumut Art Exhibition; Drummoyne VH/Commended – Portrait section, VH/Commended – Oils section, H/Commended – Watercolour section; Camden Art Prize – 1st in Watercolour, Winner Bruce Ferguson OAM Open Award, Winner Camden Art Prize; Currabubula Red Cross Art Show, winner of the 'Winsome Busby BEM Memorial Prize' for champion painting

**Inta Charteris** RAS – Northern Suburbs A&H Art Show – 1<sup>st</sup> in Pastel, 2<sup>nd</sup> in Oils (Landscape), 2<sup>nd</sup> in Oils (Animals) and 4th in Drawing

**Marlene Weaver** FRAS – Oyster Bay Art Exhibition – H/Commended – Portrait Section



## Drawing—The Essential Ingredient

“Journey to Irlwentya”

The inspiration for this drawing came from my sketch book drawings on a trip last year to the East MacDonnell Ranges. It is a mixed media work with rice paper collage, watercolour and ink. I find that mixed media is an exciting and experimental way of working.

**Yvonne Langshaw** FRAS

## Sketch Clubs at the RAS

**Thursday evenings** 6.30-8.30pm (nude)  
Cost: \$15 per session (cash only)

**Friday mornings** 10am-1pm (nude)  
Cost: \$20 per session (cash only)  
(First and last Fridays of the month are designated for a long pose).

**First Sunday of the month** 11am-2pm  
(painting a portrait from life)  
Cost: \$20 per session (cash only)

If you would like to sit for a portrait, volunteers should contact Christine at the RAS on 9955-5752 or email [lavender@royalart.com.au](mailto:lavender@royalart.com.au)

**Last Sunday of the month** 11am-2pm (nude)  
Cost: \$20 per session (cash only)

**For all sessions please note** easels and boards are available, BYO material, no need to book. Everyone welcome in a relaxed and creative atmosphere.

Off street parking at the rear of the RAS is available whilst attending the sketch club. Turn right into Middlemiss Street and right into Walker Lane.

## **RAS Raffle “Harbour Twilight” by Rob Candy ARAS**



This painting has been generously donated by our Vice-Patron Judy Pennefather FRAS. Thank you Judy for your continued support.

The raffle will be drawn on Sunday 6 August 2017 the same day as the drawing of the Ballot Fundraiser. Winner, if not present, will be notified by phone on the day.

The Society is a “not for profit” association. All monies raised are in aid of the Society.

**3 tickets - \$5**

**8 tickets - \$10**

**17 tickets - \$20**

Contact Christine on 9955 5752 for tickets.

---

## **Profiles of RAS Fellows – Bruce Herps**



Bruce was born in Sydney and attended Fort Street High School and Sydney University. He practised law specialising as a Corporate Lawyer –managing the law department of a major company.

Bruce commenced part time study and practice of painting and drawing including printmaking in the 1970's. He became an Exhibiting Member of the Royal Art Society in 1986 and was appointed Life Drawing teacher in the Art School in 1989 and continued until 1997.

A Fellow of the Society, he was a Council Member for a number of years and Senior Vice President.

His works are represented at the Artarmon Galleries and his paintings depict domestic scenes, figure groups, nude, figures in landscape, printmaking, woodcuts and linocuts – all in a modernist style.

Bruce who has recently celebrated his 90<sup>th</sup> Birthday has won many awards over the years and his works are in both corporate and private collections here in Australia and various countries around the world.

**Exhibition brief: A cosy fire, a warm blanket, a sunny corner, or a dream of a faraway exotic place – these are a few ways of escaping the woes of winter. What is yours?**

## ENTRY FORM

# 'Escape Winter Exhibition'

SEND IN DAY: MONDAY 5 JUNE 2017 BETWEEN 10AM AND 3PM

NAME: \_\_\_\_\_

EMAIL: \_\_\_\_\_

CONTACT NUMBER: \_\_\_\_\_

STATUS: FELLOW  ASSOCIATE  EXHIBITING

GST REGISTERED YES/NO

CONDITIONS OF ENTRY

Two entries per member

All works must be for sale

\$10 for small to medium painting - \$20 for large paintings

All works must be signed

All works must have standard hanging cord

Each painting must have a luggage tag on which the artist, title of work and price is written; tag to be attached by string to the cord

Old and damaged frames not accepted

Works to be delivered between 10am and 3pm on the stated Send in Day or the Sat/Sun just prior.

TITLE	MEDIUM USED	AUS \$

I AGREE WITH THE TERMS AND CONDITIONS SET OUT ON THIS FORM:

SIGNATURE: \_\_\_\_\_ DATE: \_\_\_\_\_

- to be hung are selected by the Council of the Royal Art Society based on quality of work and space limitations and that their decisions will be final and no correspondence will be entered into.
- The Royal Art Society cannot accept responsibility for paintings, sculptures left on the premises.
- The commission rate for members is 30%.
- Unsold paintings must be collected at the conclusion of the exhibition. \*Country members excluded
- **I give permission for the Society to reproduce an image of my work for the purpose of advertising the exhibition YES / NO**

## Forthcoming Art Prizes for 2017 – compiled by Stephen Caldis

**Please note:** Members should refer to previous Newsletters for any Art Prizes in 2017 that have been advertised in earlier editions.

<b>2017 Pirtek Still Life Prize</b> \$3,000 Entries close: 14 June 2017 Contact: bdgallery.com	<b>Wynne Prize</b> \$50,000 Entries close: 7 July 2017 Contact www.artgallery.nsw.au
<b>Artist in Residence Bundanon Trust</b> Entries close: 19 June 2017 Contact: 02 44222108 programs@bundanon.com	<b>Sulman Art Prize</b> \$40,000 Entries close: 7 July 2017 Contact: www.artgallery.nsw.au
<b>NSW Parliament Plein Air Art Painting</b> Prize \$20,000 Entries close: 19 June 2017 Contact: pleinair.com.au	<b>Woollahra Small Sculpture</b> Prize \$24,000 Entries close: 17 July 2017 Contact: sculpture.woollahra.nsw.gov.au
<b>Brisbane Art Prize</b> \$10,000 Entries close: 30 June 2017 Contact www.brisbaneartprize.com	<b>Lloyd Rees Memorial Youth Art Award</b> Entries close: 6 August 2017 Contact www.lanecove.com.au
<b>Singleton Art Prize</b> \$22,000 Entries close: 30 June 2017 Contact www.singletononhunterrotary.org.au	<b>Northern Beaches Art Prize</b> \$27,000 Entries close: 3 September 2017 Contact: Paddingtonartprize.com.au
<b>Archibald Prize</b> \$100,000 Entries close: 7 July 2017 Contact: www.artgallery.nsw.au	

**RAS Website Artists' Gallery.** As mentioned in previous newsletters, if you are an exhibiting member and would like to be included in our online members' gallery, please email the following to [susiedevenport@gmail.com](mailto:susiedevenport@gmail.com)

1. No more than 6 jpeg images of paintings with titles not larger than 200kb each;
2. a pdf with information about you, no more than 200 words (or type directly onto your email to me and I will copy and paste, if it's easier). Include your own website address if applicable;
3. a photograph of yourself if you wish.

Refer to the existing pages on our Artists' Gallery if guidance is needed at [www.royalart.com.au](http://www.royalart.com.au). Let me know if you have a particularly favourite painting which you would like used as the thumbnail image to enter your page.



### Stay Connected ... ..

Have you “liked” the Royal Art Society of NSW on Facebook? In just two years, our following has grown to over 800 people world-wide. If you want to keep up to date with news and events at the Royal, simply “like” our page and invite your friends to “like” it too. Supporting us in this simple way helps to get the message out that we are continuing our tradition of great art and exhibitions, exciting classes and life-time friendships.

## RAS 2017 Program of Events

<p><b><u>June</u></b></p> <p><b>Sunday 4</b> Close "Walk on the Wild Side" 4pm <b>Monday 5</b> Send in "Escape Winter Exhibition" between 10am-3pm <b>Friday 9</b> Opening "Escape Winter" Exhibition 6-8pm <b>Monday 12</b> <b>Queens Birthday – Gallery closed</b> <b>Friday 16</b> Council Meeting 4pm</p> <p><b><u>July</u></b></p> <p><b>Sunday 2</b> Close "Escape Winter" Exhibition <b>Monday 3</b> Last drop off for Ballot Fundraiser paintings between 10am -3pm <b>Saturday 8</b> First viewing Ballot Fundraiser Exhibition <b>Tuesday 11</b> Ballot Cocktail Party (for ballot donors only) <b>Friday 21</b> Council Meeting 4pm</p> <p><b><u>August</u></b></p> <p><b>Sunday 6</b> Ballot Draw (ticket holder only) <b>Monday 7</b> <b>Gallery Closed</b> <b>Tuesday 8</b> <b>Gallery Closed</b> <b>Friday 18</b> Council Meeting 4pm <b>Monday 21</b> Send in Annual Spring Exhibition (featuring Medal of Distinction Award) 10am-3m <b>Friday 25</b> Opening Annual Spring Exhibition (6-8pm) featuring Medal of Distinction Award</p> <p><b><u>September</u></b></p> <p><b>Friday 1</b> Council Meeting 4pm <b>Tuesday 12</b> Fellows morning tea 11am Meeting 11.30am</p>	<p><b><u>October</u></b></p> <p><b>Sunday 1</b> Finish Annual Spring Exhibition <b>Monday 2</b> <b>Labour Day – Gallery closed</b> <b>Monday 9</b> Send in ASMA (Marine Exhibition) <b>Friday 13</b> Opening ASMA (Marine Exhibition) <b>Friday 20</b> Council Meeting 4pm <b>Sunday 29</b> Finish ASMA Marine Exhibition <b>Monday 30</b> Send in Art School Exhibition (10am-3pm)</p> <p><b><u>November</u></b></p> <p><b>Friday 3</b> Opening Art School Student Exhibition (6-8pm) <b>Friday 17</b> Council Meeting 4pm <b>Sunday 26</b> Close Art School Student Exhibition <b>Monday 27</b> Send in Christmas Exhibition (10am-3pm)</p> <p><b><u>December</u></b></p> <p><b>Friday 1</b> Opening Christmas Exhibition (6-8pm) <b>Wednesday 13</b> Council Meeting 4pm <b>Sunday 17</b> 4<sup>th</sup> term ends <b>Friday 22</b> <b>Gallery closes until next year</b></p>
---	--

..... o o O o o .....

**President:** John Perkins FRAS  
**Art School Director:** Greg Hansell FRAS  
**Secretary:** Christine Feher **Ph:** 9955 5752 **email:** lavender@royalart.com.au  
**eNewsletter Editor:** Sue Woodland **Ph:** 9874 3243 **email:** suenewsletter@gmail.com  
**Next Deadline: 30 June 2017**