

bossfelt



CATALOG 2017

contact@bossfelt.com

www.bossfelt.com

(510) 926-6510 or (800) 893-9179

100% Wool | 3mm

SPECIFICATIONS

Content: 100% Merino wool
Thickness: 1/8" (3mm)
Roll Width: 71" (180cm)
Roll Length: 38 yds (35m)
Weight: 24 oz/sq yd (814 g/m2)
Origin: Western Europe

CUSTOM COLORS & WEIGHTS

We offer custom colors and thicknesses for quantity orders.

Please contact us for more information regarding minimums and lead times.

SPECIAL TREATMENTS

Adhesive backing
FR coating

Please contact us for more information regarding minimums and lead times.

QUALITY + ENVIRONMENTAL

Wool felt is a natural material and is completely biodegradable. Tested free of harmful substances according to Oeko-Tex © Standard 100 / Product Class I, the highest standard of safety rewarded to children's clothes & products.

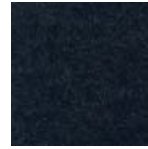
VARIATION

All natural material vary in color and texture between production runs. In addition, colors may appear differently in photographs or online. If color match is critical please order our sample pack before ordering yardage.

PRODUCT CARE

Remove small stains with soap and water. Wool felt may be dry cleaned but never machine washed. Avoid storing in damp places.

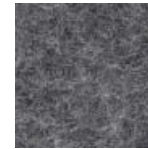
3mm Colors



67 Noir



G9 Graphite



G7 Natural Grey



64 Mouse Grey



92 Dove



103 Shell



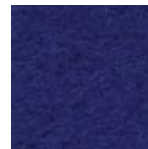
42 Snow



6 Hot Pink



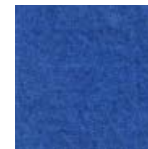
7 Grape



40 Indigo



36 Dusk Blue



59 Peacock



58 Caribbean



24 Leaf Green



14 Forest



29 Chartreuse



16 Sun



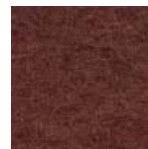
20 Orange



9 Rouge



90 Brick



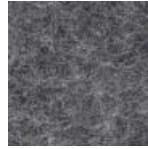
82 Nut Brown

100% Wool | 5mm

SPECIFICATIONS

Content:	100% Merino wool
Thickness:	3/16" / 5mm
Roll Width:	71" (180cm)
Roll Length:	38 yds (35m)
Weight:	41 oz/sq yd (1400 g/m2)
Origin:	Western Europe

5mm Colors



G7 Natural Grey



67 Noir

CUSTOM COLORS & WEIGHTS

We offer custom colors and thicknesses for quantity orders.

Please contact us for more information regarding minimums and lead times.

SPECIAL TREATMENTS

Adhesive backing

FR coating

Please contact us for more information regarding minimums and lead times.

QUALITY + ENVIRONMENTAL

Wool felt is a natural material and is completely biodegradable. Tested free of harmful substances according to Oeko-Tex © Standard 100 / Product Class I, the highest standard of safety rewarded to children's clothes & products.

VARIATION

All natural material vary in color and texture between production runs. In addition, colors may appear differently in photographs or online. If color match is critical please order our sample pack before ordering yardage.

PRODUCT CARE

Remove small stains with soap and water. Wool felt may be dry cleaned but never machine washed. Avoid storing in damp places.

Premium Synthetic | 2mm

SPECIFICATIONS

Content: Synthetic blend (details below)
Thickness: 5/64" / 2mm
Roll Width: 43" (110cm)
Roll length: 32.8 yds (30m)
Weight: 12.4 oz/sq yd (420g/m²)
Origin: Asia

CUSTOM COLORS & WEIGHTS

We offer custom colors and thicknesses for quantity orders.
Please contact us for more information regarding minimums and lead times.

SPECIAL TREATMENTS

Adhesive backing
Please contact us for more information regarding minimums and lead times.

VARIATION

Colors may appear differently in photographs and online.
Colors may vary slightly between production runs. If color match is critical, please order our sample pack before ordering yardage.

PRODUCT CARE

Synthetic felt may be brushed or vacuumed. Spot clean with soap and water or dry clean. Although synthetic felt is colorfast, please do not machine wash.

CONTENT

C92 / C121 / C122: 57% Polyester, 43% Nylon
C80 / C84 / C85 / C86 / C87 / C92 / C113 / D03: 72% Polyester, 18% Nylon, 10% Rayon
RO-14 / RO-01U: 100% Polyester

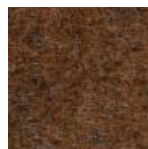
2mm Colors



C92 Charcoal



C93
Heather Grey



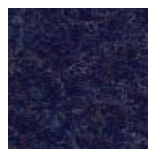
D03 Acorn



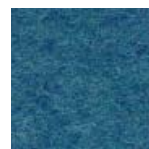
C81 Desert



C80 Bone



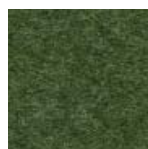
C113
Midnight Blue



C84 Ocean



C119 Foam



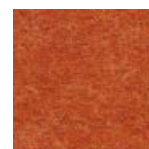
C85 Army



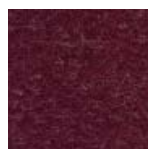
C122 Grass



C121 Dijon



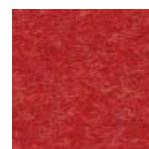
C86
Burnt Orange



C116 Grape



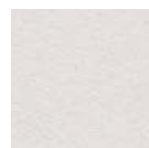
C88
Subtle Pink



C87 Red Hot



RO-14
Jet Black



RO-01U
Chalk

Premium Synthetic | 4mm

4mm Colors

SPECIFICATIONS

Content: Synthetic blend (details below)
Thickness: 5/32" / 4mm
Roll Width: 43" (110cm)
Roll length: 10.9 yds (10m)
Weight: 25 oz/sq yd (850g/m²)
Origin: Asia



BK114 Carbon



C411 Dark Grey

CUSTOM COLORS & WEIGHTS

We offer custom colors and thicknesses for quantity orders.
Please contact us for more information regarding minimums and lead times.

SPECIAL TREATMENTS

Adhesive backing
Please contact us for more information regarding minimums and lead times.

VARIATION

Colors may appear differently in photographs and online.
Colors may vary slightly between production runs. If color match is critical, please order our sample pack before ordering yardage.

PRODUCT CARE

Synthetic felt may be brushed or vacuumed. Spot clean with soap and water or dry clean. Although synthetic felt is colorfast, please do not machine wash.

CONTENT

BK114 / C411: 57% polyester / 43% nylon

CUSTOM WORK

Bossfelt offers specialized cutting & fabrication for our 100% Wool and Premium Synthetic felt yardage.

Whether for fine art projects, product development, or interiors applications our in-house services include:

- ◆ Laser Cutting
- ◆ Die Cutting
- ◆ Adhesive Backing
- ◆ Sewing & Fastening

The types of projects we fabricate:

- ◆ Cut Parts (bag straps, washers, etc.)
- ◆ Environmental Graphics + Wall Decals
- ◆ Hanging Curtain Panels
- ◆ Tabletop (coasters, placemats, table runners)

Please contact us to learn which of our custom services is right for your project. So we can serve you best, use our "Request a Quote" sheet at the end of this catalog.

Please email your completed form & design drawings to contact@bossfelt.com

CUTTING SERVICES



Laser Cutting



Die Cutting



Adhesive Backing



Sewing & Fastening

REQUEST A QUOTE

NAME (First, Last)

COMPANY

PHONE NUMBER

PROJECT NAME or SIDEMARK (Optional)

PROJECT DESCRIPTION: Include pertinent details, quantity, timeline, etc.
(Please send design drawings as PDF files)

BOSSFELT Material Specifications

100% Wool Felt

 3mm 5mm Other

Premium Synthetic Felt

 2mm 4mm Other

Color (Code / Name)

WARRANTY & PRODUCT MAINTENANCE

WARRANTY

Bossfelt products carry a one year limited warranty from the date of shipment or installation against manufacturing defects.

For purposes of this warranty, manufacturing defects do not include normal wear, user modifications, acts or omissions of persons other than Bossfelt, improper cleaning, adverse environmental conditions, surface blemishes and/or other characteristics considered natural.

Natural characteristics of felt may include, but are not limited to: color variation, dimensional changes due to environmental conditions, and slight inclusions of natural or blending fibers. Bossfelt cannot guarantee consistency of color from bolt to bolt due to expected variations in dye batches.

PRODUCT MAINTENANCE - Wool Felt

To remove any accumulation of general airborne debris, 100% wool felt should be gently vacuumed, brushed or rolled with a lint remover.

Please note that slight shedding of fibers is normal and not indicative of any defect. These loosened fibers are easily vacuumed away and will decrease over time.

Lanolin, the naturally occurring waxy coating on wool fibers, makes wool water repellent and provides an inherent stain resistance. This allows time for liquid spills to be blotted away before permanent staining can occur. If a wet spill should occur, blot up the liquid as soon as possible with a dry cloth to avoid absorption.

Soiled areas may be spot cleaned with a damp cloth. If your product is installed with adhesive backing, DO NOT soak the felt as this may compromise the integrity of the adhesive. Avoid aggressive rubbing as this can continue the felting process and change the surface appearance of the felt.

If the felt can be removed, obtaining the services of a professional dry cleaning company that is familiar with the special care of wool is recommended.

PRODUCT MAINTENANCE - Synthetic Felt

To remove any accumulation of general airborne debris, synthetic felt should be gently vacuumed, brushed or rolled with a lint remover.

Soiled areas may be spot cleaned with a damp cloth. If your product is installed with adhesive backing, DO NOT soak the felt as this may compromise the integrity of the adhesive. Avoid aggressive rubbing as this can change the surface appearance of the felt.

Spot clean with soap and water or dry clean.

Although polyester felt is colorfast, please do not machine wash.