

HIGHLIGHT STUDIOS

INTRODUCTION

Highlight Studios is a full-service photography studio located in the NoMad neighborhood of Manhattan.

STUDIOS

Studio A is an authentic north-light studio built to optimal specifications as established in the 1850s. North-light photographic studios and lighting conditions were made famous in the 20th century by icons including Irving Penn and Richard Avedon.

Studio A has been constructed with a sloped, north-facing wall of windows plus a glass ceiling that allows for continuous soft light throughout the day. Each window bay is installed with remote controlled, custom fit shades, giving the photographer full command over the amount and direction of light entering the space.

Studio B is ideal for still life and small production shoots. Studio B has been constructed with a north-facing wall of windows. A rooftop deck is also available for open air shoots.

DETAILS

Studio A

- approx. 1,200 Sq Ft
- Full kitchen & bathroom
- Includes access to rooftop deck
- Capacity: 50
- \$1200

Studio B

- approx. 600 Sq Ft
- \$500

T
212 457 0095

W
highlightstudios.nyc

A
36 E 30th St New York NY 10016

HIGHLIGHT STUDIOS

STUDIO A



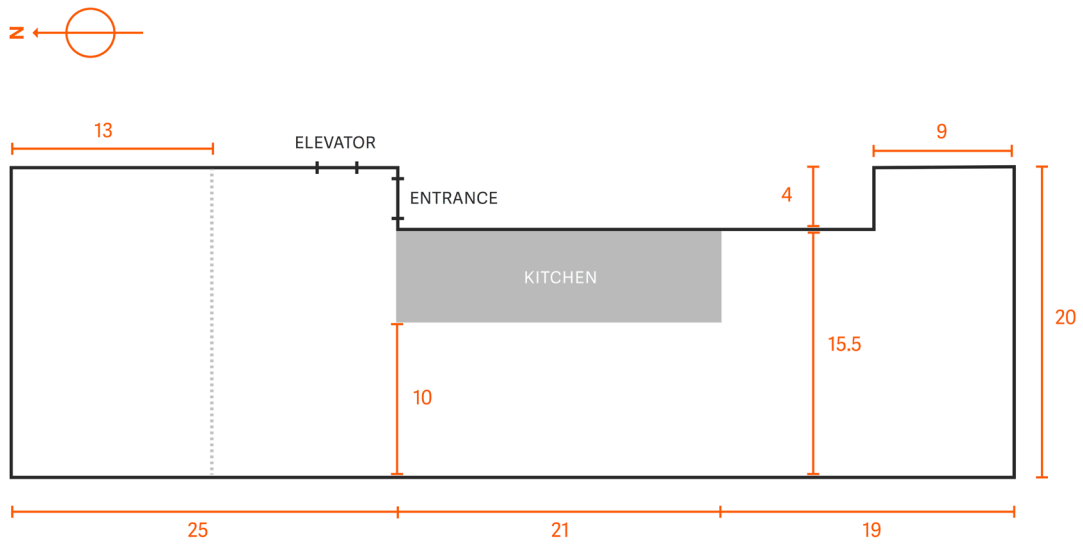
T
212 457 0095

W
highlightstudios.nyc

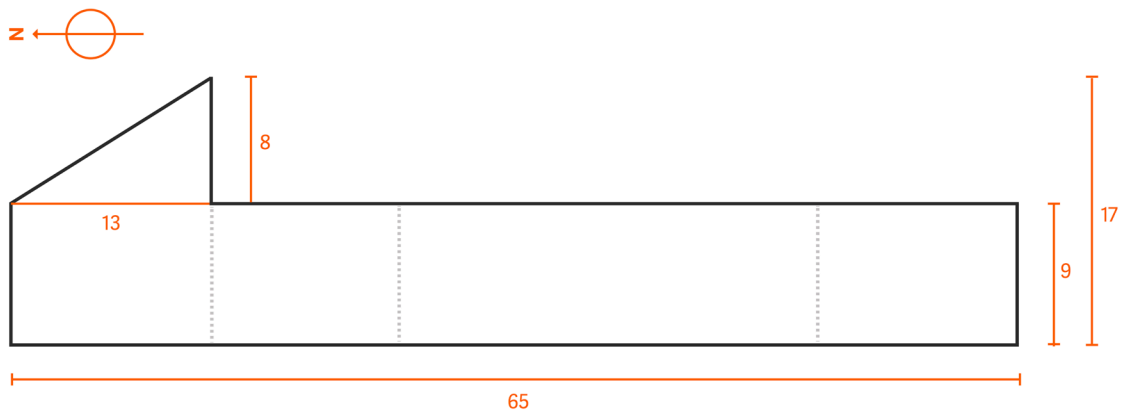
A
36 E 30th St New York NY 10016

HIGHLIGHT STUDIOS

STUDIO A FLOORPLAN



STUDIO A ELEVATION



T
212 457 0095

W
highlightstudios.nyc

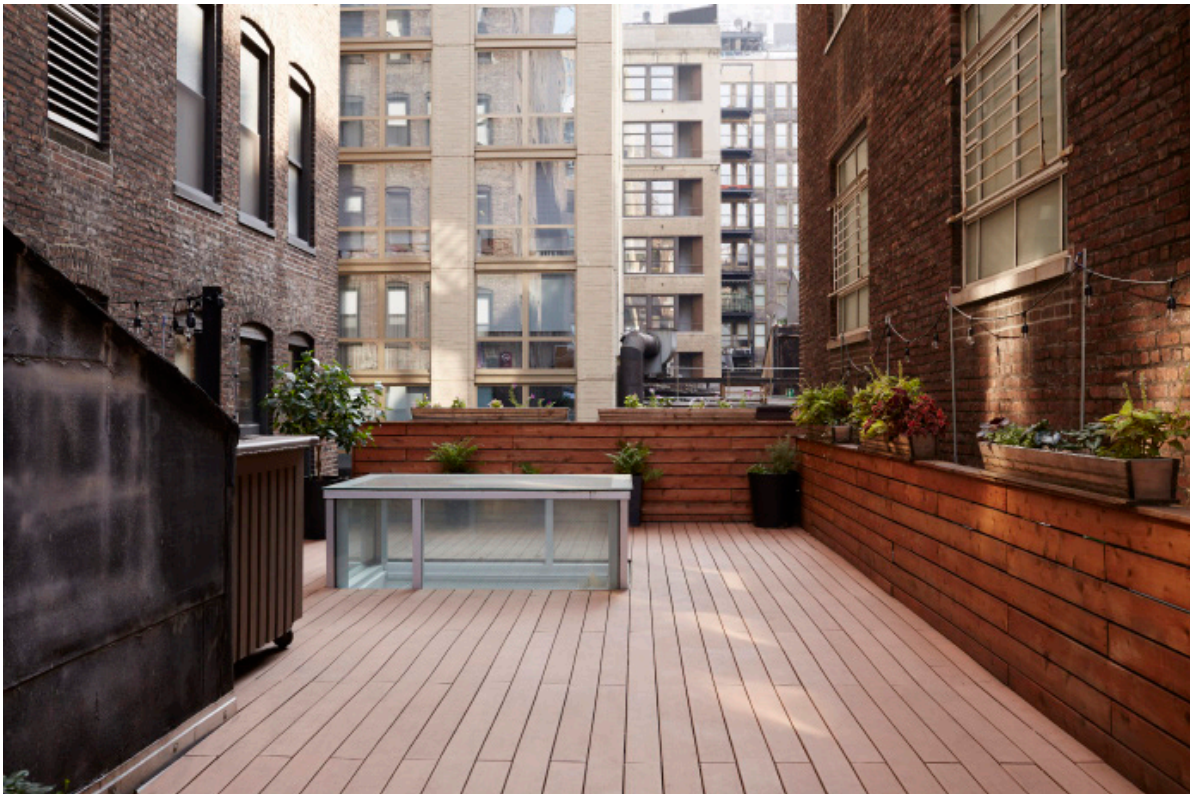
A
36 E 30th St New York NY 10016

HIGHLIGHT STUDIOS

STUDIO B



ROOFTOP DECK



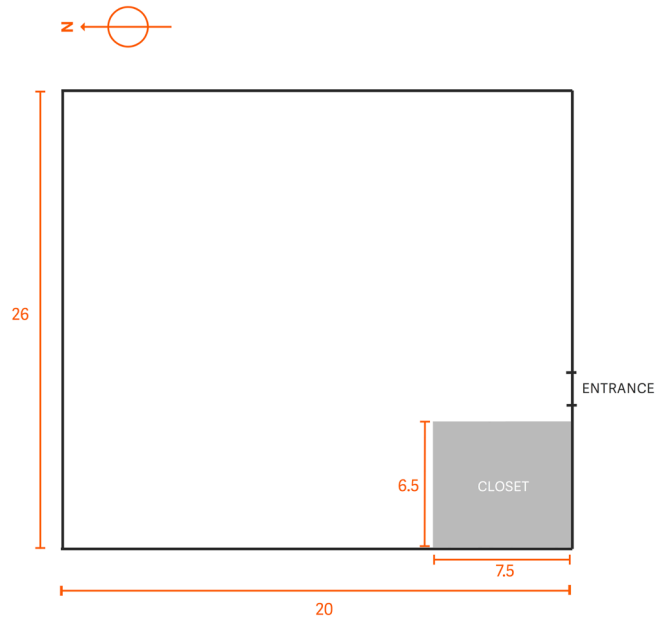
T
212 457 0095

W
highlightstudios.nyc

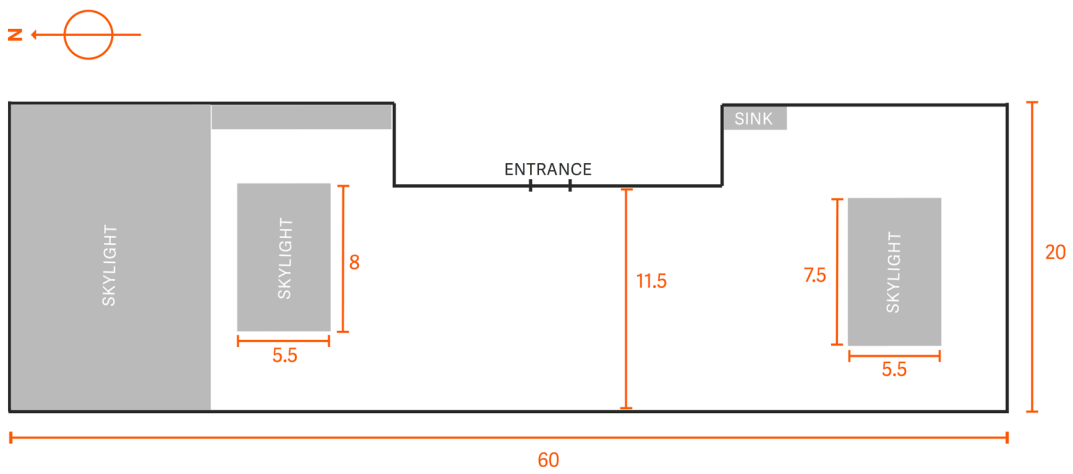
A
36 E 30th St New York NY 10016

HIGHLIGHT STUDIOS

STUDIO B FLOORPLAN



ROOFTOP DECK FLOORPLAN



T
212 457 0095

W
highlightstudios.nyc

A
36 E 30th St New York NY 10016