

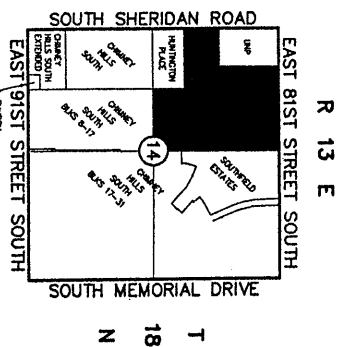
CERTIFICATE

As provided in Title 11, Chapter 13, Section 514 of the Oklahoma Statutes, I hereby certify that as to all real estate taxes involved in this plat, all such taxes have been paid as reflected by the current tax rolls and security as required by said Section 514 has been provided in the amount of \$ 208.99 per trust receipt no. 08923

to be applied to 19 98 taxes not as yet
This certificate is NOT to be construed as payment of 19 97 taxes in full but is given in order that this plat may be filed of record
19 98 taxes could exceed the amount of the security deposit.

Dated June 22, 1998
DENNIS SEALER
TULSA COUNTY TREASURER

STATE OF OKLAHOMA }
COUNTY OF TULSA } SS
I, Joan Hastings, Tulsa County Clerk, in and for the County and State above named, do hereby certify that the foregoing is a true and correct copy of the instrument now on file in my office.
Dated the 22nd day of June, 1998
JOAN HASTINGS, Tulsa County Clerk



Location Map

SUBDIVISION CONTAINS THREE-HUNDRED SEVENTY-NINE (379) LOTS IN NINETEEN (19) BLOCKS AND FIVE (5) RESERVES NET SUBDIVISION AREA: 118,282 ACRES

The Crescent

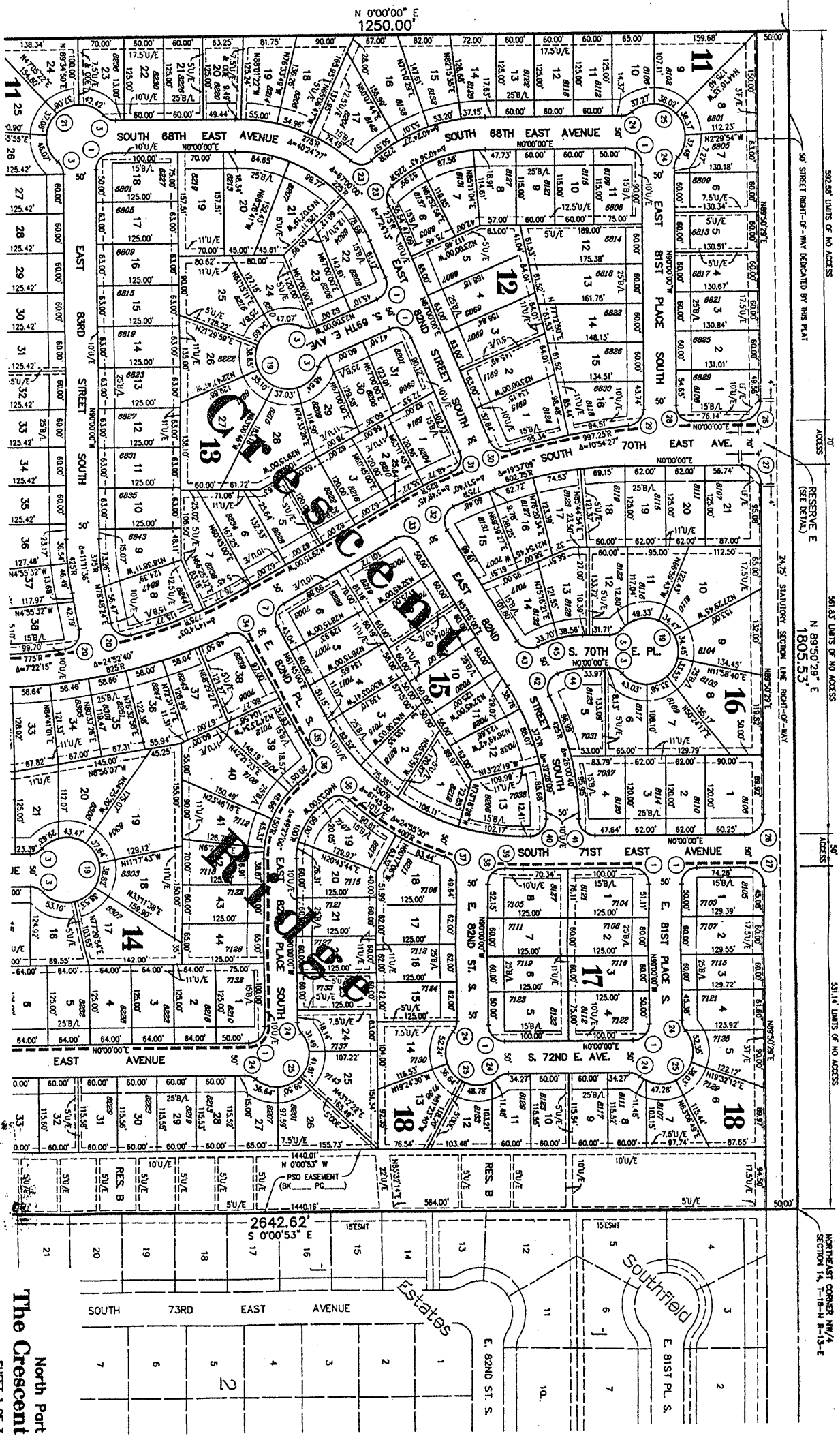
PART OF THE NORTHWEST QUARTER (NW/4) OF SECTION FOURTEEN (14) TOWNSHIP EIGHTEEN (18) NORTH, RANGE THIRTEEN (13) EAST, OF THE INDIAN BASE AND MERIDIAN AN ADDITION TO THE CITY OF TULSA, TULSA COUNTY, OKLAHOMA

ENGINEER: Sanders Engineering, Inc.
1205 South Redbud Avenue
Broken Arrow, Oklahoma 74012
Phone: (918)258-9100

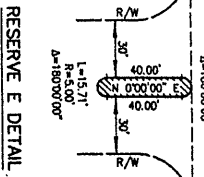
OWNER: 81st and Sheridan, L.L.C.
2217 East Skelly Drive
Tulsa, Oklahoma 74105
Phone: (918)749-1657

SURVEYOR: Kenneth A. Isaacs, RLS
P.O. Box 1062
Sand Springs, Oklahoma 74063
Phone: (918)245-0456

East 81st Street South



Curve No.	Length (ft)	Radius (ft)	Delta (deg)
1	36.27	23.00	90.00
2	21.03	23.00	90.00
3	190.87	50.00	181.74
4	190.87	50.00	181.74
5	36.27	23.00	90.00
6	36.27	23.00	90.00
7	36.27	23.00	90.00
8	36.27	23.00	90.00
9	36.27	23.00	90.00
10	36.27	23.00	90.00
11	36.27	23.00	90.00
12	36.27	23.00	90.00
13	36.27	23.00	90.00
14	36.27	23.00	90.00
15	36.27	23.00	90.00
16	36.27	23.00	90.00
17	36.27	23.00	90.00
18	36.27	23.00	90.00
19	36.27	23.00	90.00
20	36.27	23.00	90.00
21	36.27	23.00	90.00
22	36.27	23.00	90.00
23	36.27	23.00	90.00
24	36.27	23.00	90.00
25	36.27	23.00	90.00
26	36.27	23.00	90.00
27	36.27	23.00	90.00
28	36.27	23.00	90.00
29	36.27	23.00	90.00
30	36.27	23.00	90.00
31	36.27	23.00	90.00
32	36.27	23.00	90.00
33	36.27	23.00	90.00
34	36.27	23.00	90.00
35	36.27	23.00	90.00
36	36.27	23.00	90.00
37	36.27	23.00	90.00
38	36.27	23.00	90.00
39	36.27	23.00	90.00
40	36.27	23.00	90.00
41	36.27	23.00	90.00
42	36.27	23.00	90.00
43	36.27	23.00	90.00
44	36.27	23.00	90.00
45	36.27	23.00	90.00
46	36.27	23.00	90.00



Unplatted

PLAT NO. 5283

RECEIVED
JUN 8 1998
TULSA METRO AREA
PLANNING COM. A

FINAL PLAT
CERTIFICATE OF APPROVAL
I hereby certify that this plat was approved by the Tulsa Metro Planning Commission on MAY 20, 1998
This approval is void if the plat is not filed in the office of the City Clerk on or before MAY 22, 1998
Approved: [Signature]
City Clerk
Approved: [Signature]
City Engineer
Approved: [Signature]
City Attorney

North Part
The Crescent
SHEET 1 OF 3