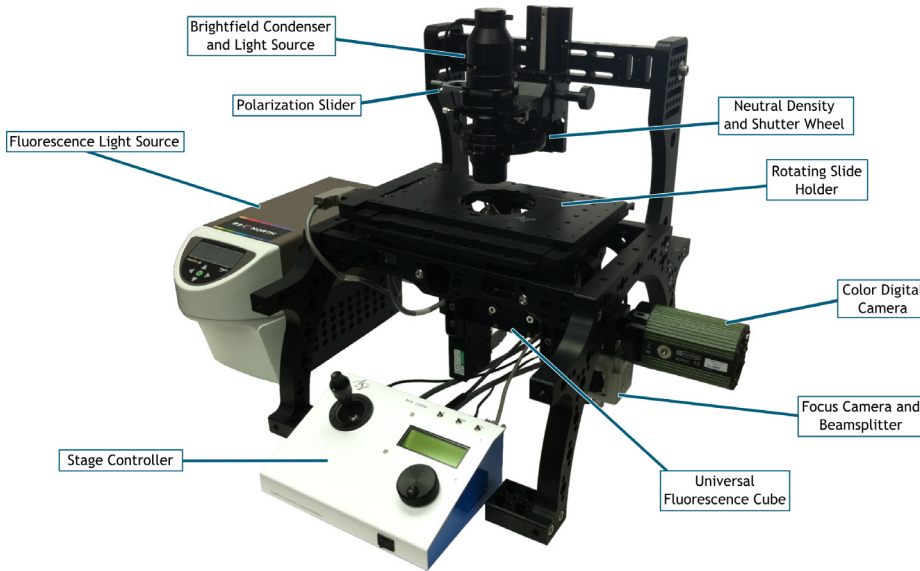


OSTEOIMAGER SCANNING MICROSCOPE



6-Position motorized RMS nosepiece

Standard lens configuration: 4X, 10X, 20X, 40X. Many alternative lens options.

Long-working distance condenser

Brightfield, polarized, and darkfield illumination with a simple slider. 18mm of working distance for slides or well-plates. 15,000 hour LED transmitted light source.

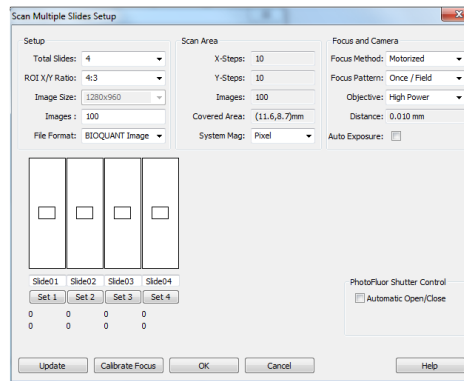
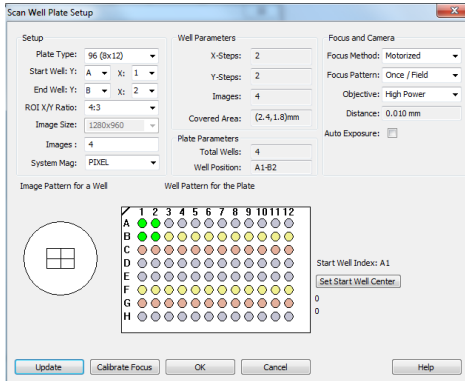
Multiple sample holders

Standard 4X slide tray, 2X rotating slide tray, and well plate holder. Optional holders for petri dishes or large format slides.

Powerful fluorescence illumination

Standard 1,500 hour metal halide light source with fiber optic coupling. Changeable ET sputtered DAPI/FITC/TRITC filter cube.

BIOQUANT SCAN



Scan slides or well plates

Quick visual setup for scanning up to 8 sections on 4 slides or up to 96 wells.

1000 megapixel resolution

Create images with over 1000 megapixel resolution with 0.5 micron resolution.

Complete hardware control

Change the objective lens, turn light sources on or off, move the stage, and capture images all from a unified software application.

Export images to standard formats

Save primary image data in uncalibrated formats like TIF for digital supplements, or in the calibrated BIF format for data interchange with collaborators. Save analyzed images with measurement tracings to SVG format to show others exactly what and where you measured.

LEARN MORE

www.bioquant.com

Toll free: (800) 221-0549

Int'l: (615) 350-7866

Learn more at
<http://osteo.bioquant.com>



Detailed Specifications

Optical Specifications

Olympus UIS2 Fluorite Objectives	4X 0.13NA, 10X 0.25NA, 20X 0.5NA, 40X 0.75NA
Long Working Distance Condenser	0.5NA, 18mm Working Distance

Illumination Specifications

Transmitted Light	10,000 Hour White LED
Epi-fluorescent Light	1,500 Hour Broad Spectrum Metal Halide
Fluorescent Filter Cube	Triple Band ET DAPI/FITC/TRITC (Changeable)
Polarized Light	Linear Polarization, All Objectives
Darkfield Light	4X and 10X Objectives

Sample Handling Specifications

Multi-slide	Fixed Vertical Orientation, 4 Slides, 25mm x 75mm
Single-slide	360° Rotation, 1 Slide, 25 x 75mm or 50 x 75mm
Well Plate	1 plate, Standard 84mm x 127mm
Universal	1 slide up to 50mm x 100mm, Petri Dish up to 50mm

Imaging Specifications

Imaging Camera	1.3 Megapixel, 6.4 micron pixels, Bayer Color, 15fps
Focus Camera	0.3 Megapixel, Auto Color / Monochrome, 30fps
Maximum Scan File Size	4GB Uncompressed
Scan File Formats	Calibrated BIF, Uncalibrated TIF
Scan Area 4X	over 2500 mm ² (1.4 microns per pixel)
Scan Area 10X	over 400 mm ² (0.56 microns per pixel)
Scan Area 20X	over 100 mm ² (0.28 microns per pixel)
Scan Area 40X	over 25 mm ² (0.14 microns per pixel)
Scan Rate, with Focus Correction	Proximal Mouse Tibia at 20X: 5 minutes
Scan Rate, without Focus Correction	Proximal Mouse Tibia at 20X: 120 seconds