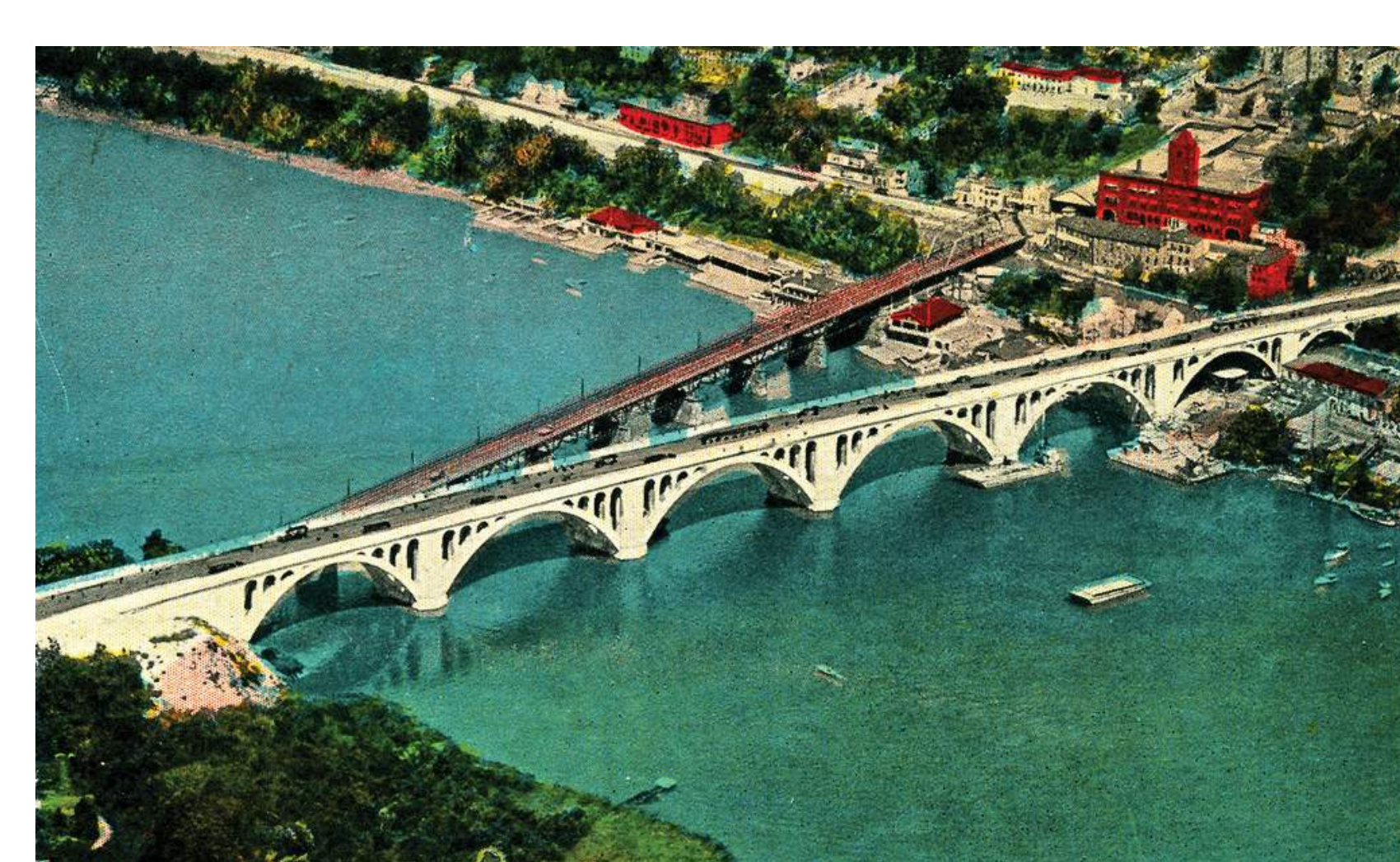
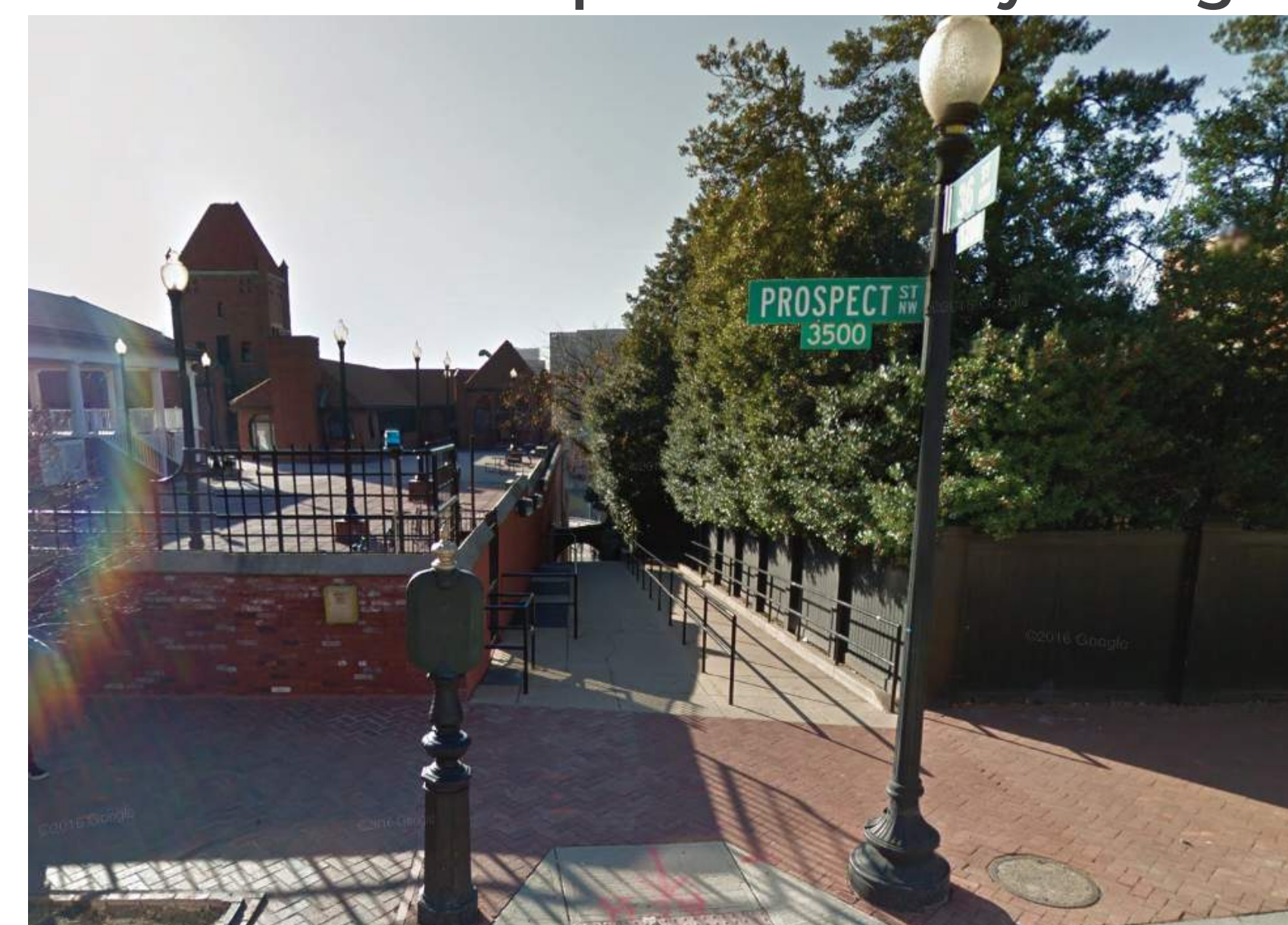


# FEASIBILITY STUDY

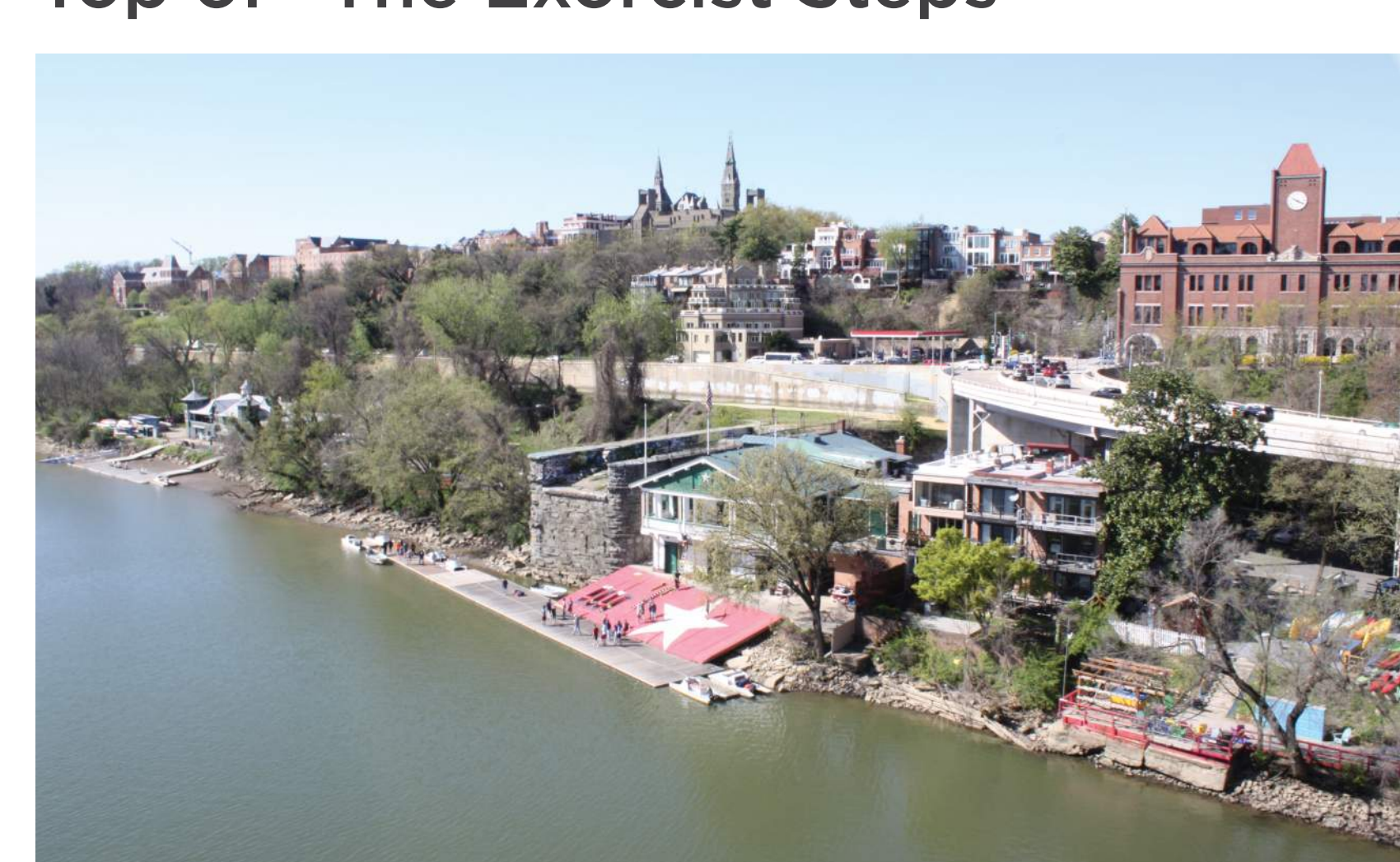
## Context



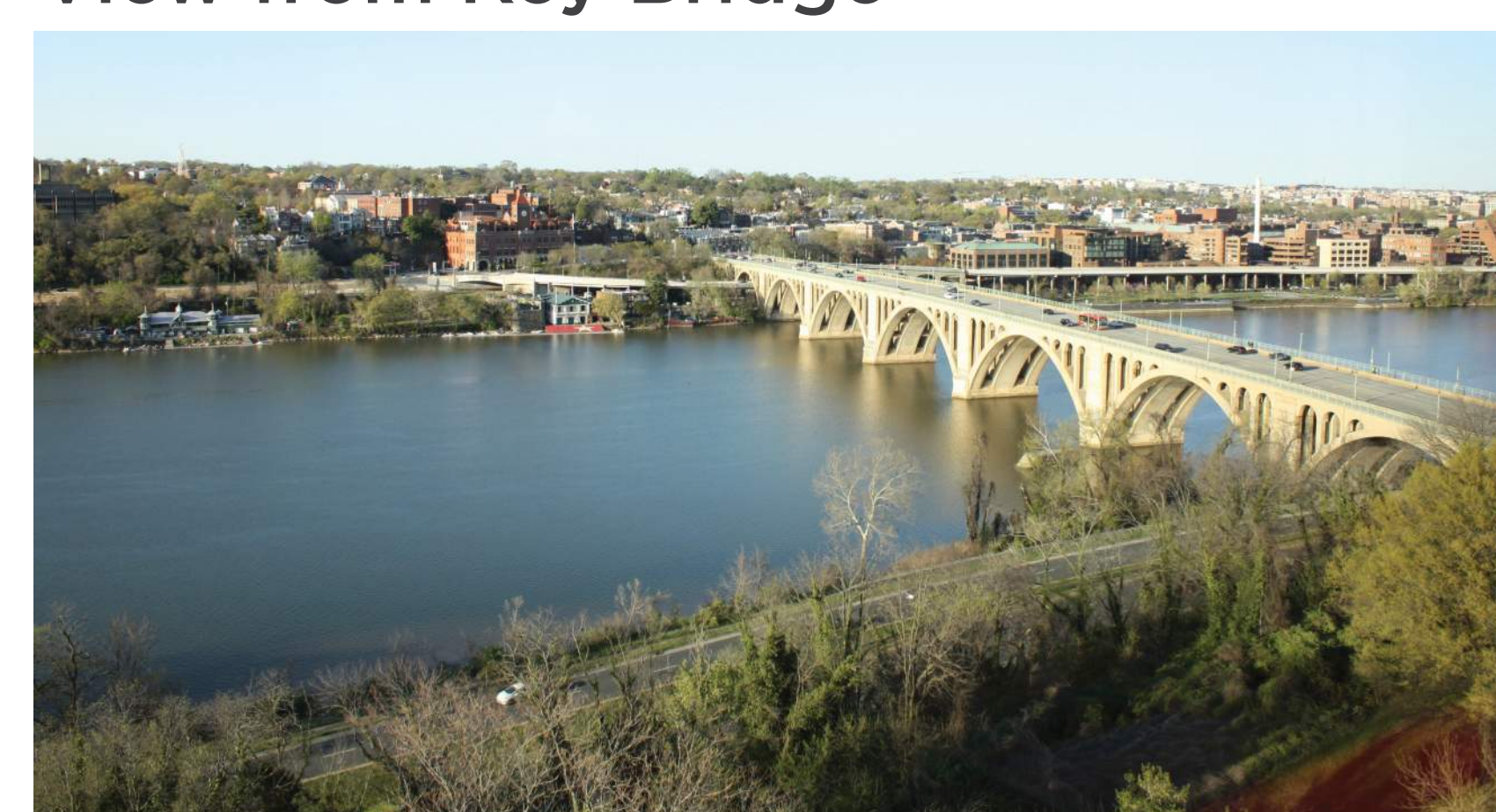
1920's View - Aqueduct & Key Bridge



Top of "The Exorcist Steps"



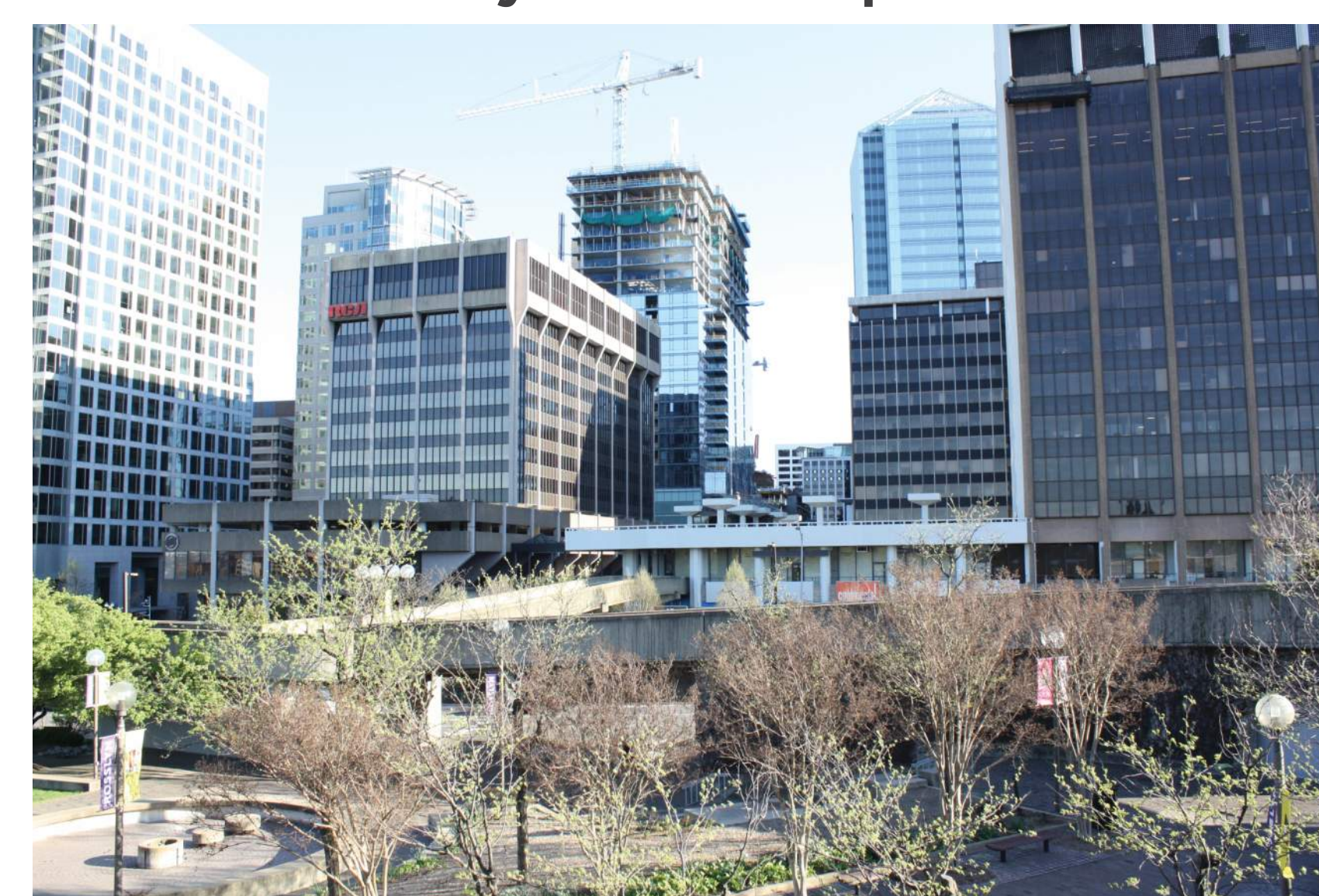
View from Key Bridge



View from Key Bridge Marriott



View of Rosslyn from Aqueduct Ruins



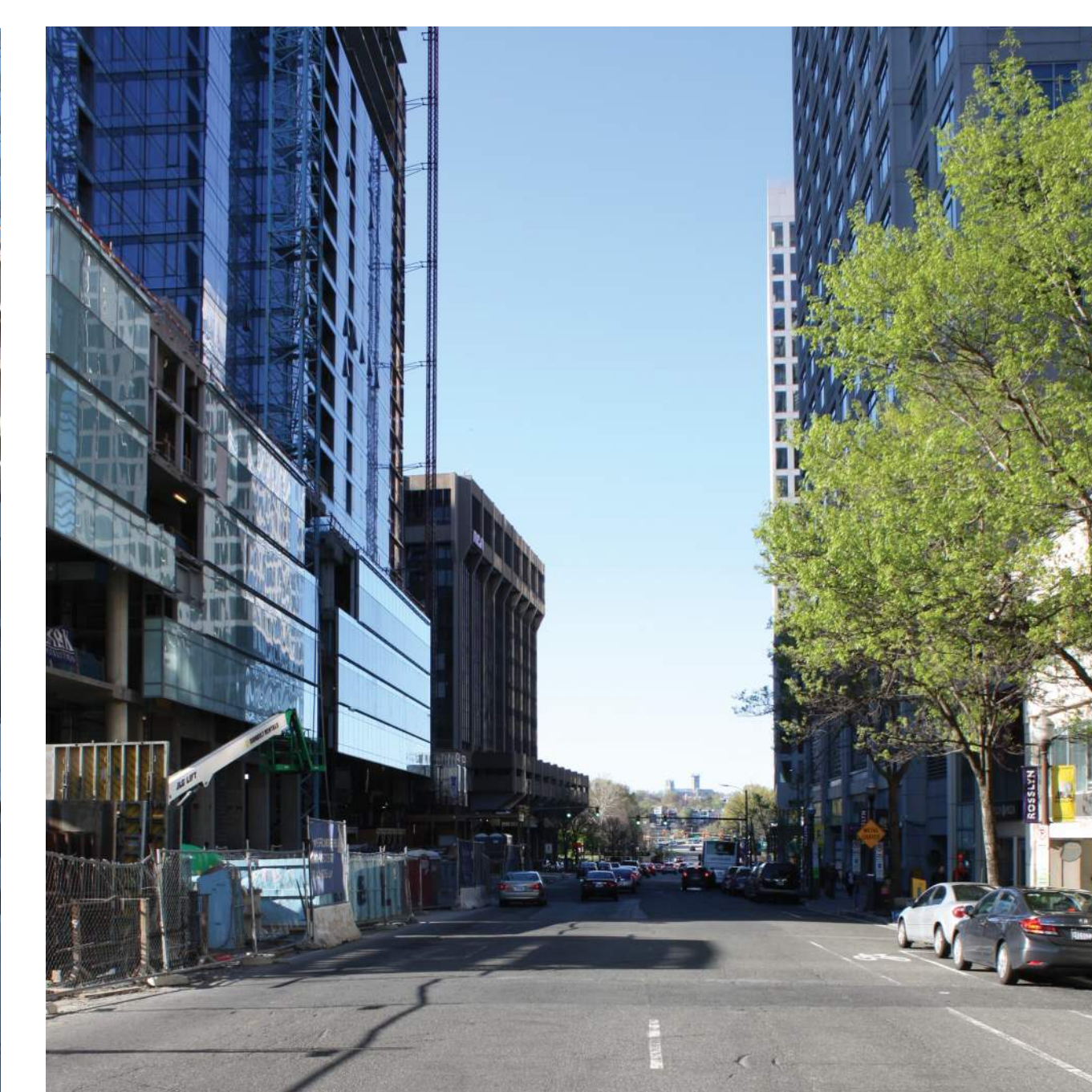
View from Gateway Park



N Fort Myer Dr - Looking North



N Moore St - Looking North



N Lynn St - Looking North

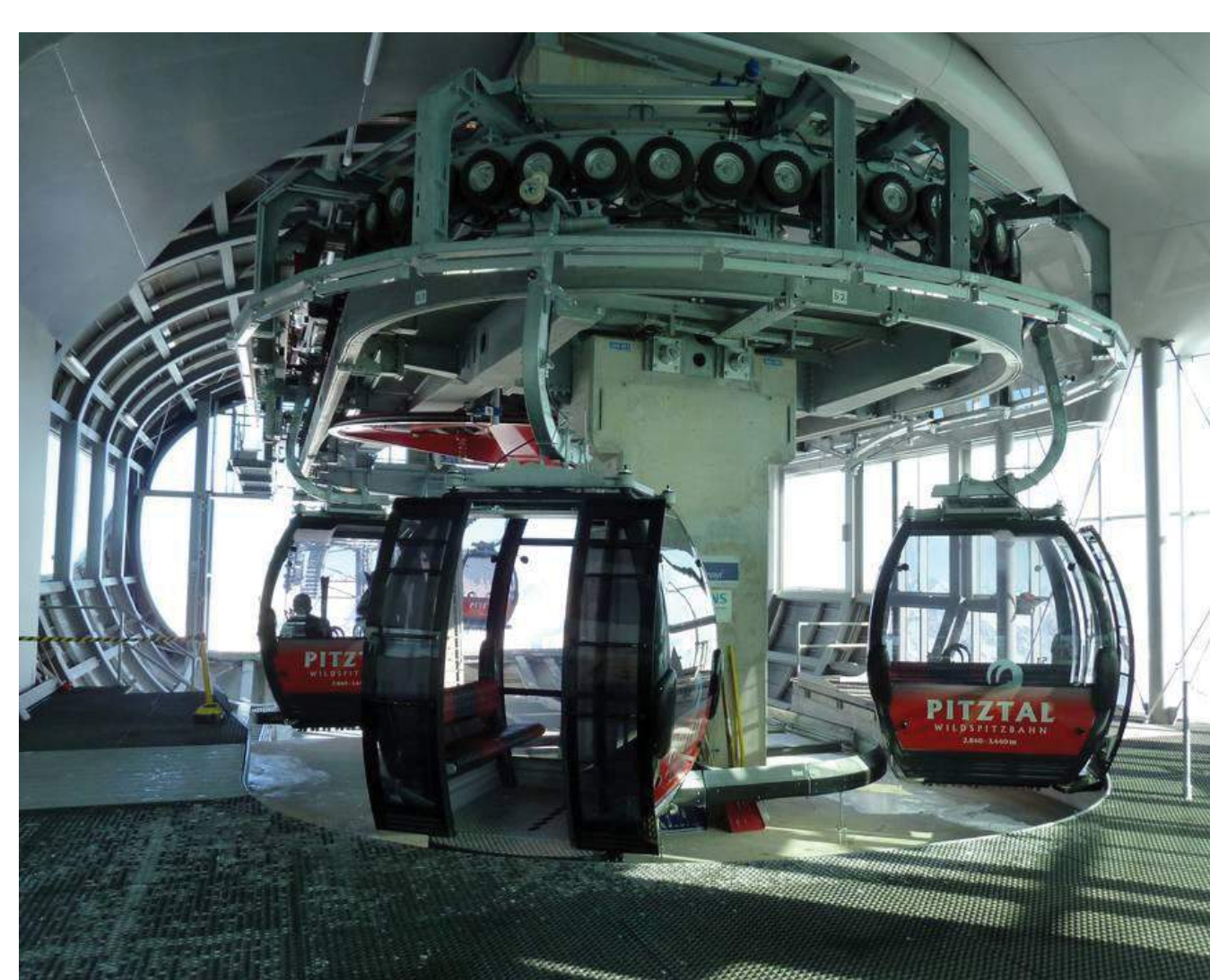


ZGF

ZIMMER GUNSUL FRASCA ARCHITECTS LLP

# DESIGN AND ENGINEERING

## Gondola Examples



Gondola Loading Area



View of Gondola Interior



View of Tram Interior



London, UK



Koblenz, Germany



Tbilisi, Georgia



Barcelona



Singapore



South Korea



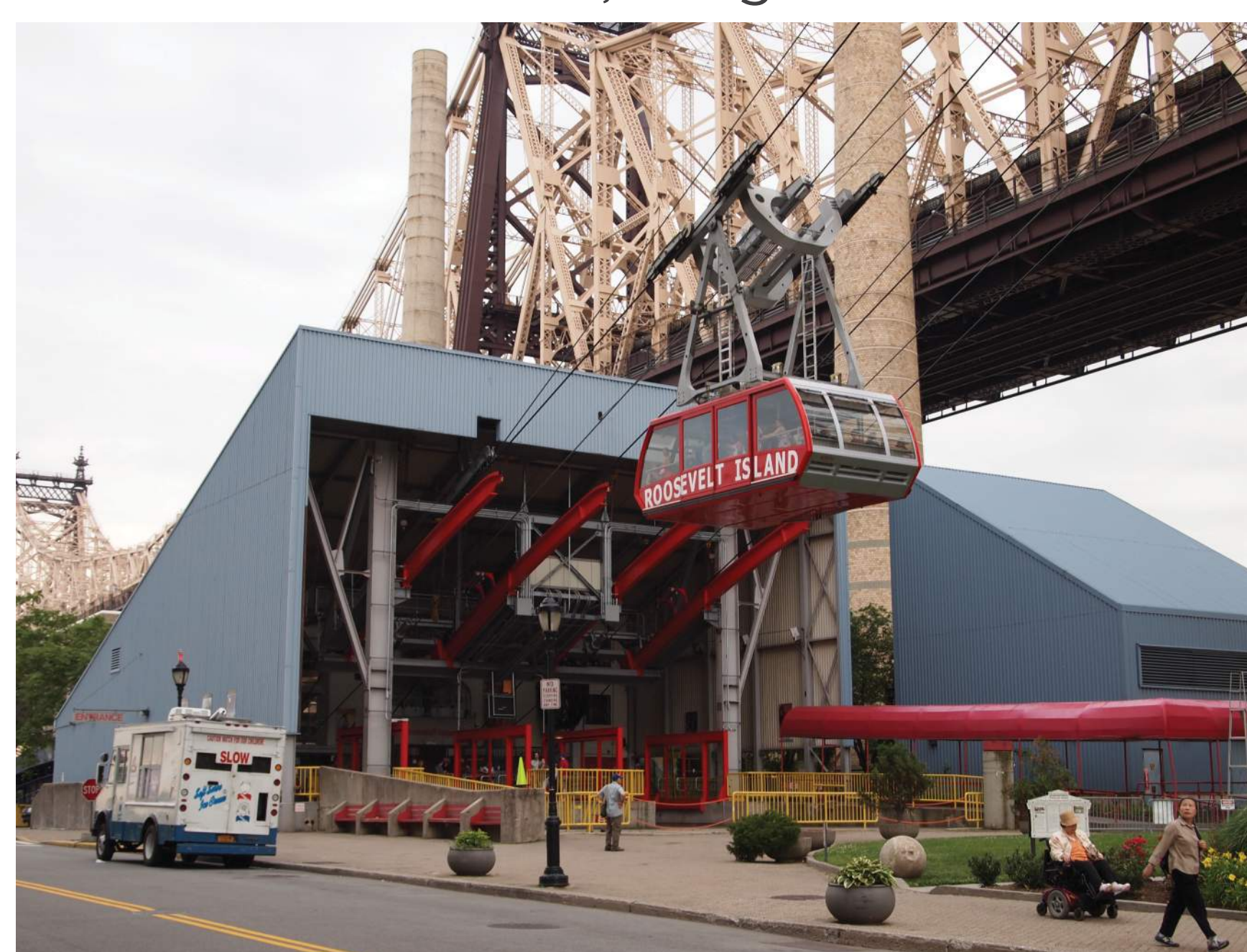
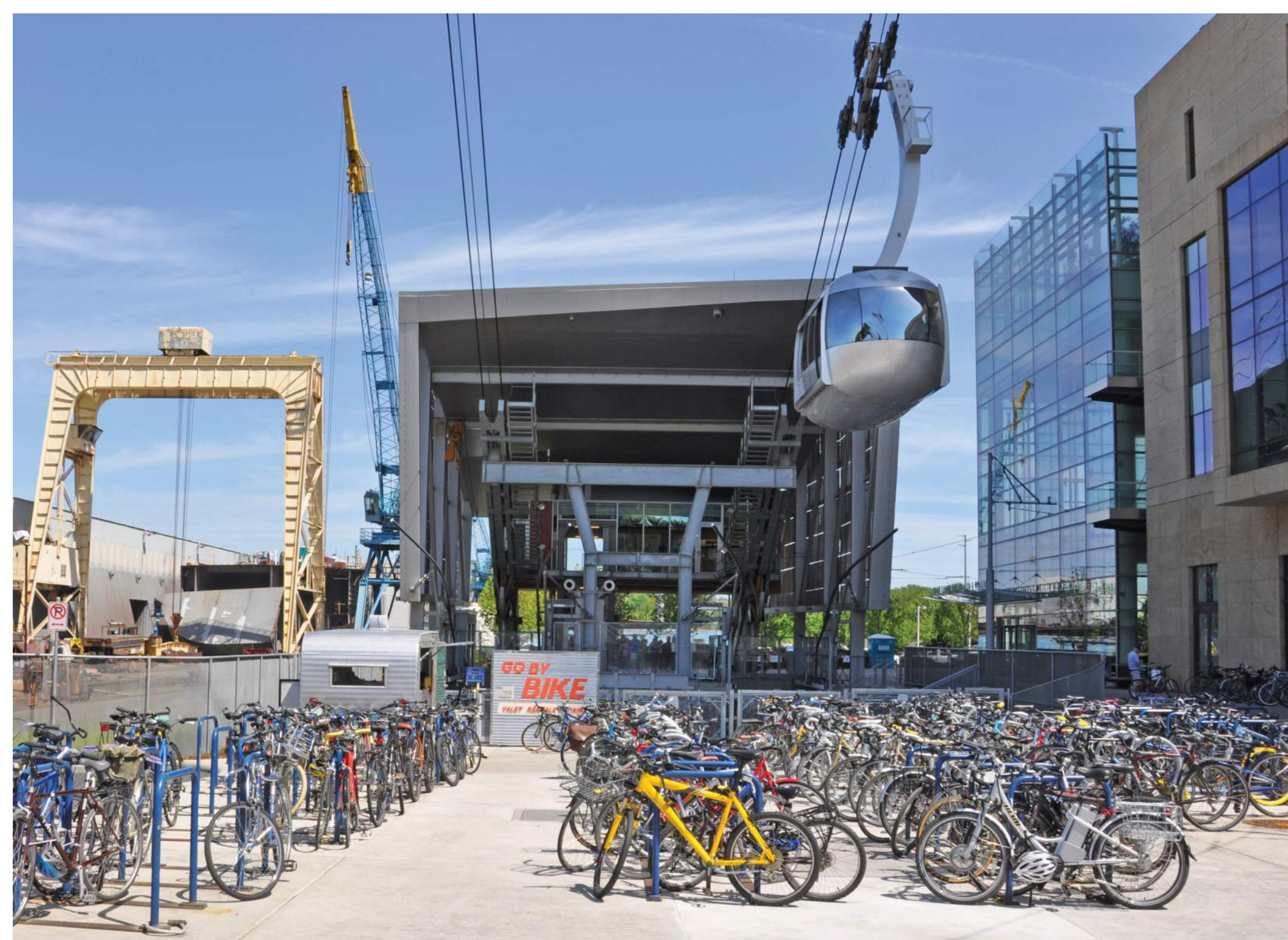
Turkey



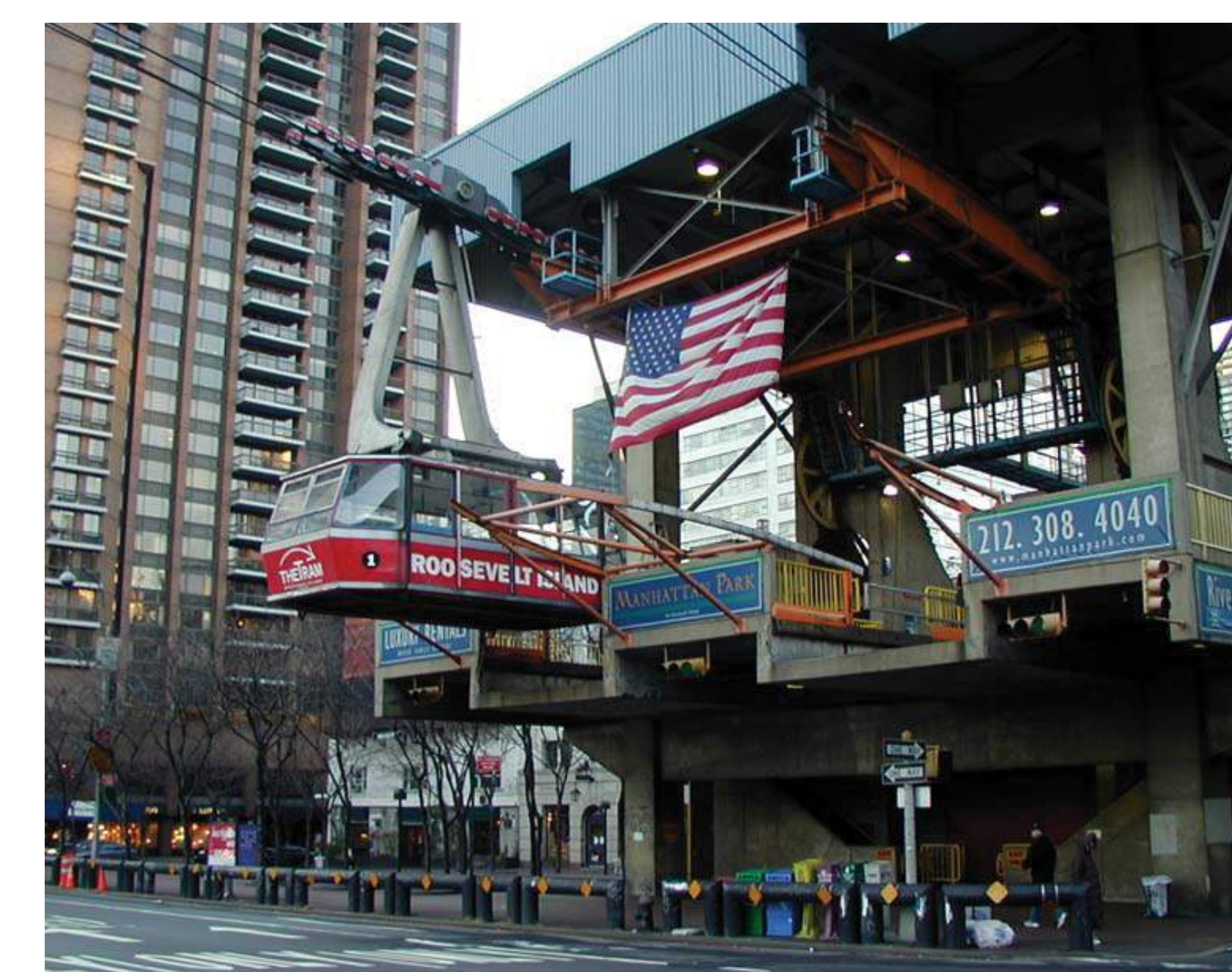
London



Portland Aerial Tram, Oregon



New York City, Roosevelt Island Tram

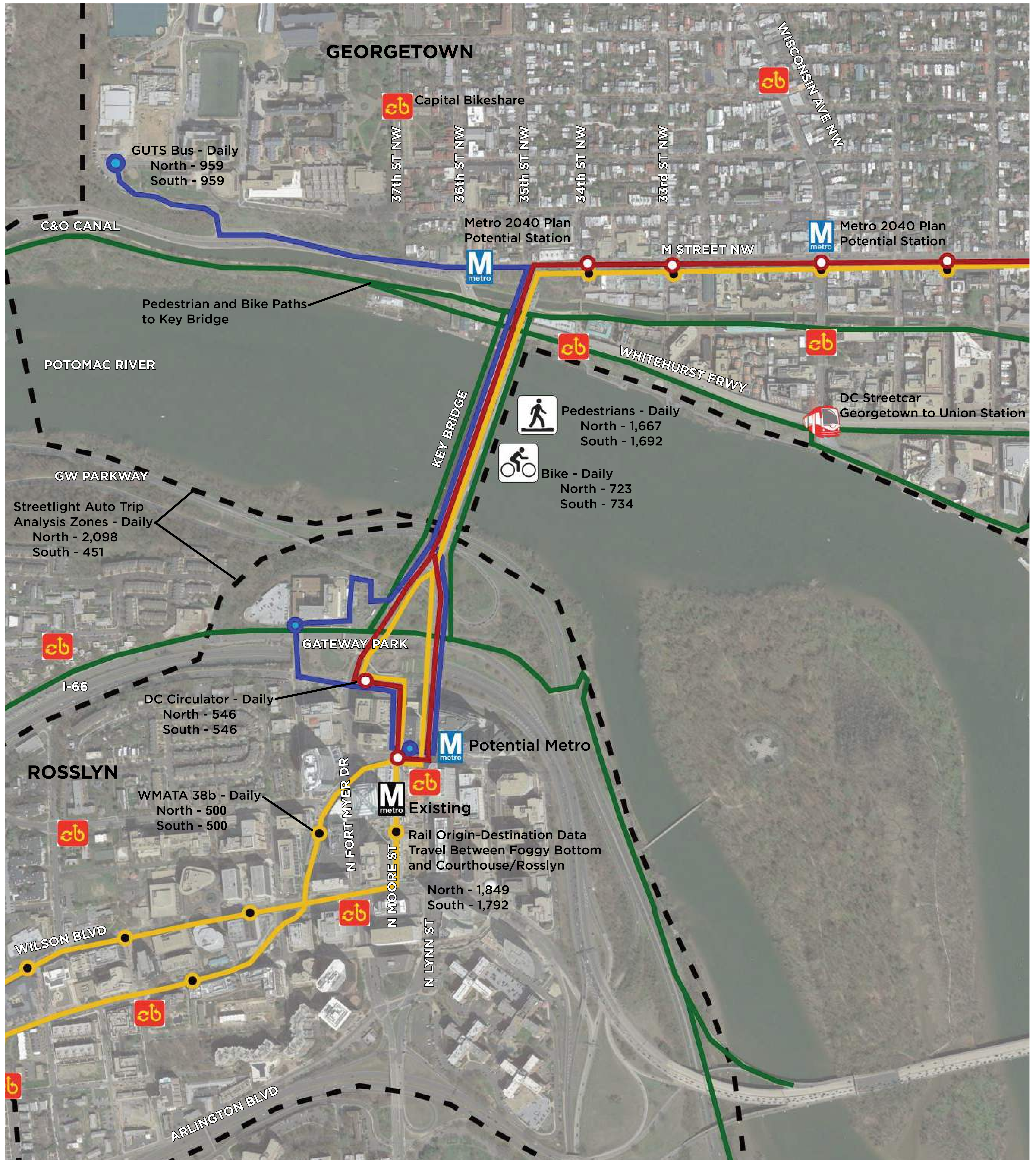


ZGF

ZIMMER GUNSUL FRASCA ARCHITECTS LLP

# TRANSPORTATION

## Existing Transportation and Future Transit Plans



## GOALS

- Provide a seamless transition from Metro to Gondola, both in regards to wait time, physical connection, transfers and ticketing.
- A Gondola should support and complement other transportation initiatives, existing and planned.
- A Gondola should provide a redundancy in the transportation system as a multi-modal choice for commuters, residents and tourists.
- Other?



# DEVELOPMENT & PLACEMAKING

## Plans and Potential Projects



Plan Diagram

## GOALS

- A Gondola should support economic development and be a complement to planned public and private investment efforts.
- The physical design of a Gondola should aim to be an enhancement of the public realm.
- Other?

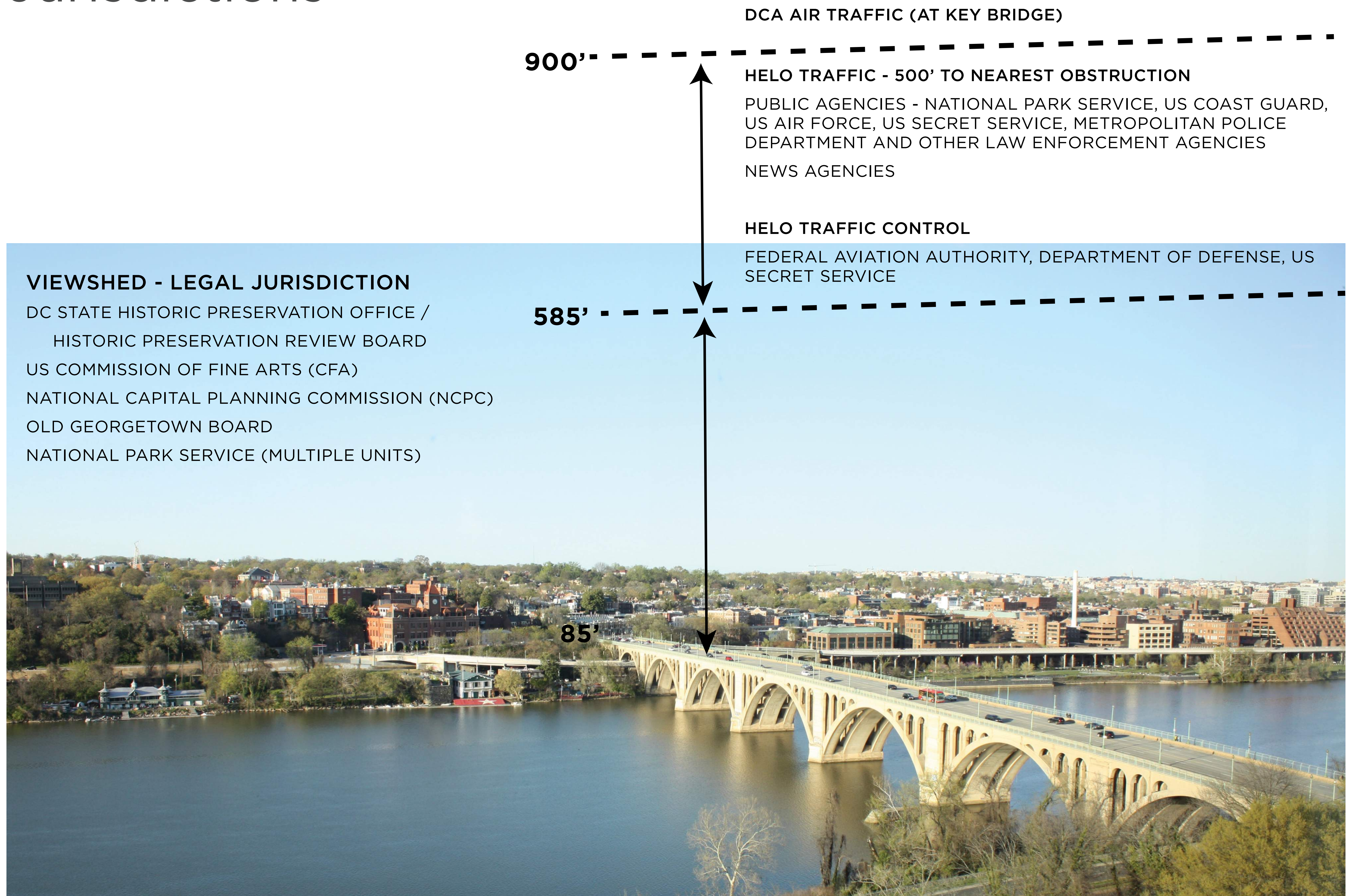


ZGF

ZIMMER GUNSUL FRASCA ARCHITECTS LLP

# THE REGULATORY PROCESS

## Jurisdictions



Section Diagram



Plan Diagram

## Coordination Agencies - Official Review / Approval

### Arlington/Virginia

Arlington Transportation Planning  
 Arlington Transit Bureau  
 Arlington Community Planning and Housing Development  
 Arlington Planning Commission  
 Arlington Transportation Commission  
 Arlington County Manager's Office  
 Arlington County Board  
 VA State Historic Preservation Office  
 Virginia Department of Transportation

### District of Columbia

District of Columbia State Historic Preservation Office  
 District Department of Consumer and Regulatory Affairs  
 District Department of Transportation  
 District of Columbia Historic Preservation Review Board  
 Metropolitan Police Department  
 DC Office of the Mayor  
 District of Columbia City Council

### Federal/Regional

National Capital Planning Commission  
 US Commission of Fine Arts  
 National Park Service  
 Federal Aviation Administration  
 United States Secret Service  
 US Air Force  
 US Coast Guard  
 US Army Corps of Engineers  
 Federal Highway Administration  
 Federal Transit Administration  
 Washington Metropolitan Area Transit Authority (Metro)  
 Old Georgetown Board  
 Federal Department of Homeland Security