



*MAN OF STEEL*





# MAN of STEEL

Key recognizable elements such as the maccasa ebony wood, use of period correct sterling silver, crystal, and a platinum color scheme are reedited into a fresh modern art-deco inspired salon space. Asian and Zen influences can be picked up in the custom platforms for the furniture, the square proportions of the cushions, and throughout.







distinct

There are quite a few things that are noteworthy about the MAN OF STEEL, but arguably the most awe inspiring feature is the floating glass floor over a bed of black river rock. Upon entering the yacht you find yourself suspended on a piece of glass. The dayhead contains the same glass and black river rock floor, but here it unfolds up the feature wall, where it is no longer behind glass and is exposed to the touch.

The full beam VIP Suite is forward on the main deck, where one would normally expect to find the master. Featuring a private sitting room and a fold down wall that becomes an outdoor private balcony experience.



Fold down wall becomes an outdoor private balcony





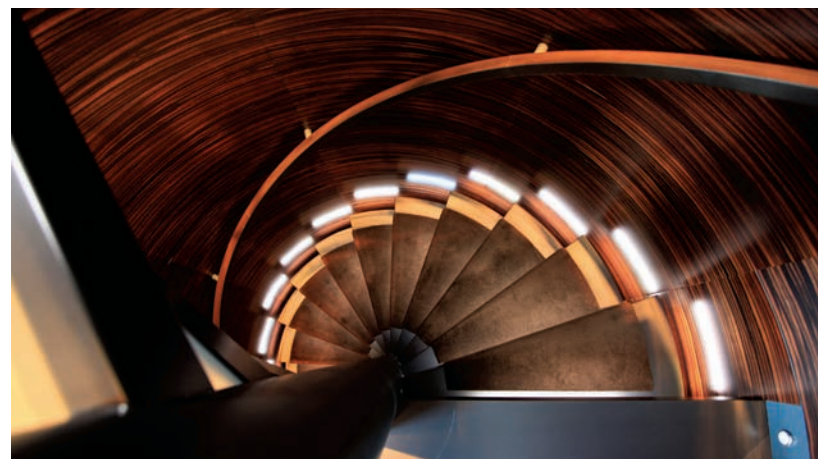
# master stateroom



The owners' suite occupies the whole upper deck aft. This full sized glass suite has views that are 240 degrees and a bed that rotates to take them all in. From this vantage, the sunrise can be viewed in the morning and the television in the evening, just by the rotation of the bed. The central windows form automatic sliding glass doors, which open onto a deck complete with spa pool, sun bathing, seating areas and bar.







# incomparable

Perhaps the most unique element of this yacht is the use of hot rolled steel threaded seamlessly and worked in elegantly throughout the yacht. The stairway floats off of the wall, supported on a steel column. The stairs are created out of steel with carpet inserts. Steel is also a notable element in the reveals of the maccasa ebony cabinetry.

Guest accommodations are all equally equipped with state of the art entertainment and luxury.



GUEST DOUBLE STATEROOM

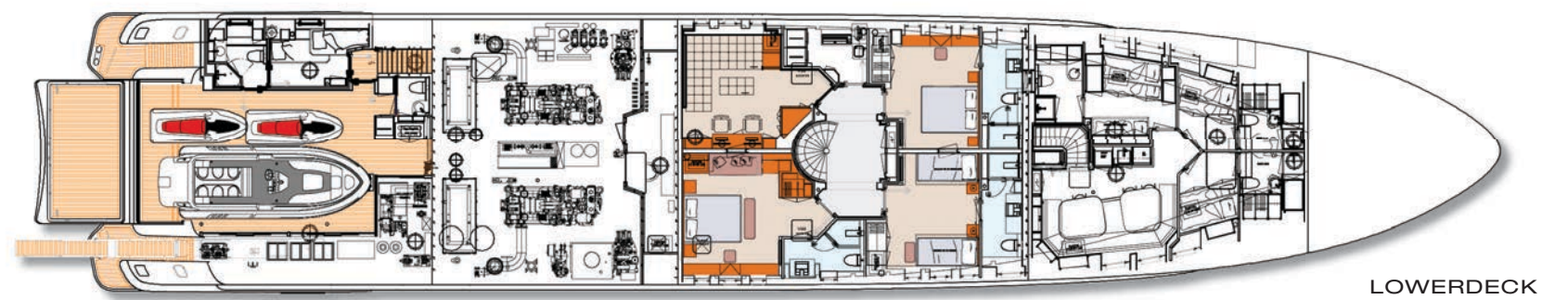
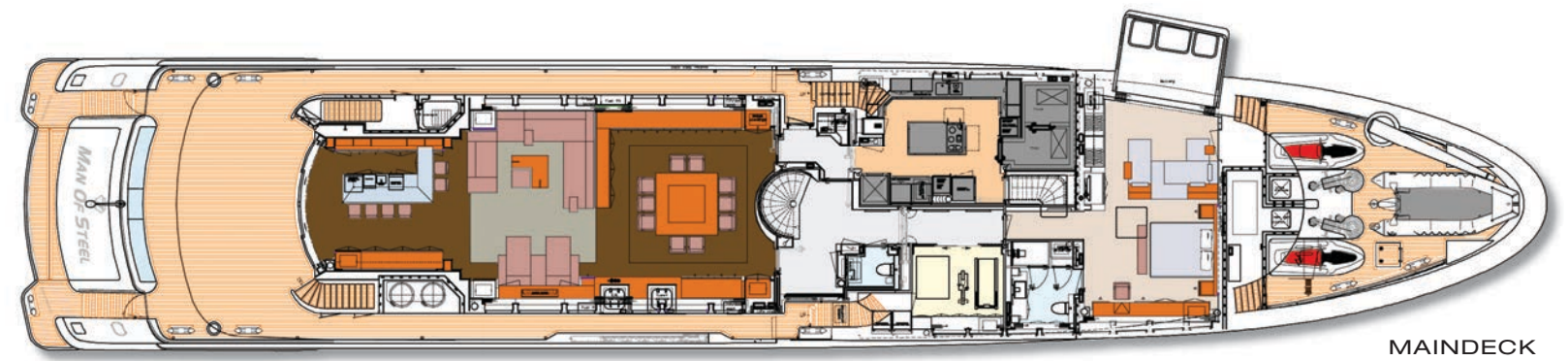
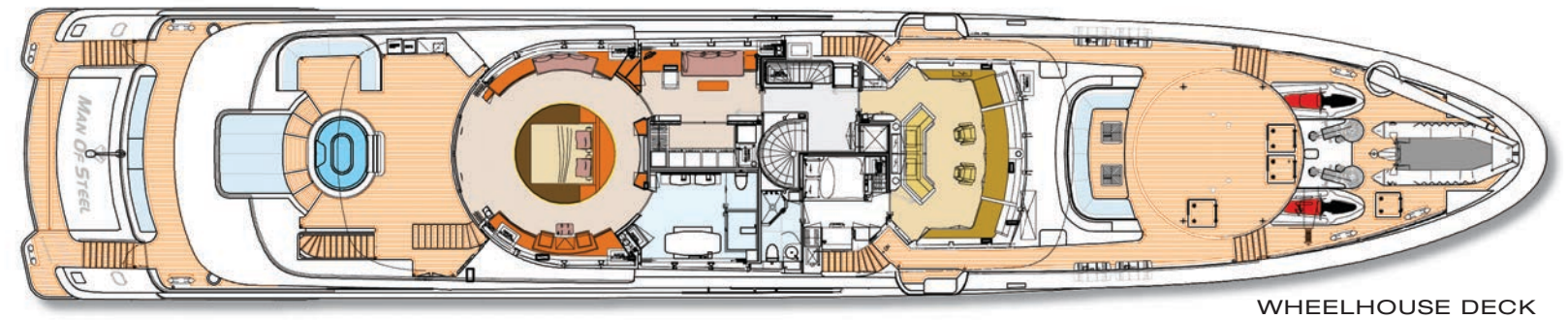
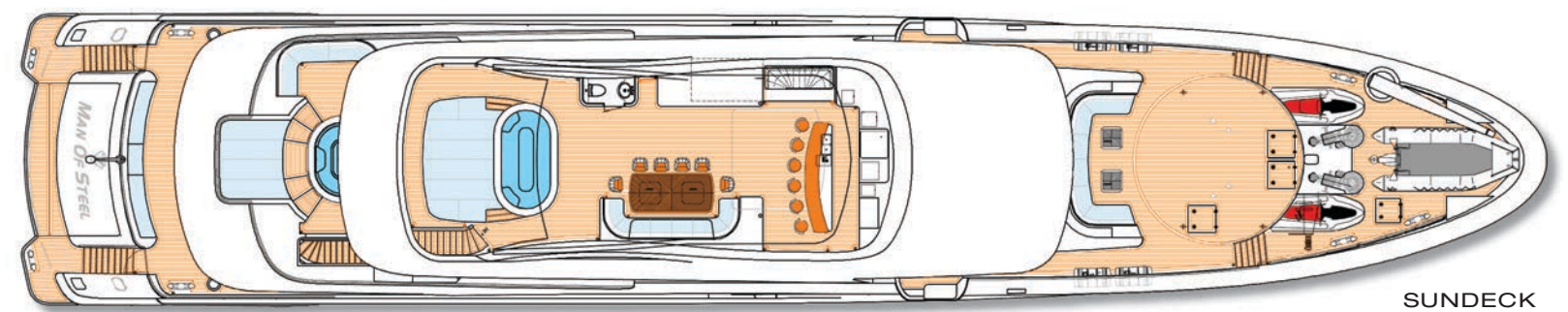


GUEST TWIN STATEROOM



The foredeck has a luxurious cabana/sun lounge, complete with retractable clamshell awning.





#### SPECIFICATIONS:

**Builder:** Heesen Yachts

**Year:** 2008

**Length:** 164' (50m)

**Beam:** 31.5' (9.6m)

**Draft:** 8.8' (2.7m)

**12 guests in 6 staterooms**

**Speed:** Cruise:13 knots Max:15.5 knots

**Hull Construction:** Steel

**Engines:** 2x MTU 8V 4,000 Series M70

**Fuel Capacity:** 22,719 gallons (86,000 liters)

**Range:** 4,000 nm @ 12 knots

**Classification:** MCA/Lloyds 100A1 SSC UMS

**Stabilizers:** Naiad Zero Speed

**Naval Architect:** Omega Design

**Exterior Styling:** Frank Laupman

**Interior Designer:** Mark Wallace - Ausberg Interiors

**Photos:** Jim Raycroft, Buggy Gedlek **Design and Production:** IYC. Fort Lauderdale, FL 1009



