

ICE Teaching Tips

STREAMING VIDEOS WITHOUT A HITCH

Multimedia can make or break a classroom presentation. The following tips provide suggestions for successfully streaming videos in class using the ICE Video Library (ICEVL).



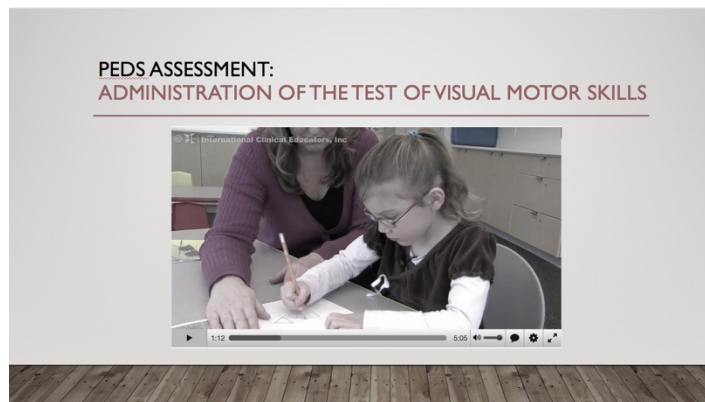
Log into the ICE Video Library prior to starting class

If your subscription includes IP Access, you should be able to log into the ICEVL automatically through your campus network at <http://library.icelearningcenter.com>. If not, then you can log in with your username and password. It's a good idea to log in prior to class! To add automatic IP Access for \$99/year per campus, contact sales@icelearningcenter.com



Embed the link into the presentation

To go directly to an ICE video from your lecture presentation, select the photo or text in your PowerPoint presentation that you want to hyperlink. Next, right click to find the "hyperlink" option. Insert the link to your chosen video and click "OK." Now, you should be able to click on that photo or text during presentation mode to go directly to the ICEVL.



Use a strong internet connection

To avoid delays, make sure your internet connection is strong enough to support video in the classroom. If not, pre-load the video prior to class so that it is ready to go!



Allow enough time for a video activity

Be sure to clearly define the purpose and expectations for the video activity. Anticipate potential technology issues by scheduling in time for troubleshooting. Be realistic in terms of how much you can get accomplished. Leave plenty of time for discussion. If needed, fill in leftover time with more videos.

For more resources and examples of using video in the classroom, visit www.icelearningcenter.com/faculty-toolkit