



# Inclusion Fusion *Live!*

*Every Church Can Do Something*

**Presented by Key Ministry**

Hosted by Bay Presbyterian Church (Bay Village, Ohio)

April 20 & 21, 2018



Key Ministry promotes meaningful connection between churches and families of kids with disabilities for the purpose of making disciples of Jesus Christ.

Since 2002, we've provided knowledge, innovation and experience to the worldwide church as it ministers to and with families of kids with disabilities. While expanding our service to churches, we find ourselves called to a new phase of ministry in which we seek to help families impacted by disability to become connected with local churches where parents and children can worship and grow in faith alongside other Christ-followers.

[www.keyministry.org](http://www.keyministry.org)

# InclusionFusion *Live!*

*Every Church Can Do Something*

On behalf of the board of directors, staff, and volunteers of Key Ministry and the people of Bay Presbyterian Church, it is my pleasure to welcome the hundreds of you physically present with us in Cleveland and all those watching online to Inclusion Fusion Live.

Over the course of this weekend, you'll have the opportunity to experience the teaching and wisdom of nearly thirty ministry leaders and professionals from many different walks of life—pastors, educators, counselors, medical and mental health professionals, disability advocates, and parents of children and adults with disabilities. I'm astounded by their passion for wanting the church to be the church when it comes to sharing the love of Christ with children, adults, and families impacted by disabilities of all types: physical, intellectual, developmental, emotional, or behavioral. All are volunteering their time. Many have traveled here at considerable expense.

The theme of this year's conference is ***Every Church Can Do Something***. Our ministry team's hope, and the hope that motivated so many of us to come together this weekend, is that every church represented at this conference would be inspired and equipped to do something (or something more than they're currently doing) to help individuals and families impacted by disability to come to faith and grow in faith in Christ through their worship activities and ministries, and that every family member in attendance would find faith and friendship, practical resources for promoting the physical, mental, and spiritual well-being of those they love, and renewed vision for how they might use their gifts and talents to advance the cause of persons with disabilities in the church.

No church on this side of heaven will ever be able to perfectly address the needs of every person affected by disability in the communities they serve. But every church can **do something more** than they're currently doing to help. And every person who has come to faith in Jesus Christ has been given gifts and talents to bless individuals and families impacted by disability.

We pray you'll leave here with a vision for doing something more for sharing Christ's love with kids and adults with disabilities, the necessary tools and resources for implementing the vision, and new friends to come alongside you and support you for the journey!

In His Service,

Steve

Stephen Grcevich, MD  
President and Founder, Key Ministry  
Co-chair, Program Committee, Inclusion Fusion Live

# FRIDAY EVENING

- 5:00pm Check-in opens || Gathering Area
- 6:30pm Worship || Sanctuary
- 6:50pm Welcome || Sanctuary
- 7:00pm Main Stage Key Notes || Sanctuary
- 7:40pm Breakout Session #1
- Quick Takes || Sanctuary
- 9:00pm Ends



# SATURDAY

- 8:00am Check-in opens || Gathering Area
- 8:30am Worship || Sanctuary
- 8:45am Welcome || Sanctuary
- 8:55am Main Stage Speakers || Sanctuary
- 9:40am Breakout Session #1  
Dads Panel & Quick Takes || Sanctuary
- 11:10am Breakout Session #2  
Moms Panel & Quick Takes || Sanctuary
- 12:30pm Lunch Break  
Marriage Panel || Sanctuary  
Parent/Church Luncheon || Lakeview
- 1:40pm Breakout Session #3  
Quick Takes || Sanctuary
- 3:00pm Conference ends

We're excited to have Brian and Kathleen as our emcees and Moody Radio as a sponsor!

---



**BRIAN** **MORNINGS**  
**AND KATHLEEN**

103.3 FM Cleveland, OH  
89.5 FM Sandusky, OH  
90.1 FM New Castle, PA  
90.5 FM Millersburg, OH  
91.7 FM Ashtabula, OH  
91.9 FM Meadville, PA

[moodyradio.org/cleveland](http://moodyradio.org/cleveland)

---

Please visit the Exhibitor Tables in the Gathering Area and Connector Hall:

Bethesda Lutheran Communities || CLC Network || Connecting for Kids || Different Dream Living || Flat Rock Homes || Fresh Hope || Hope Anew || JasonHague.com || Joni & Friends Ohio || Key Ministry || Lamar Hardwick || Leek Pipe Organ Co. || Moody Radio Cleveland || NAMI Greater Cleveland || New Horizons for Children || Northeast OH Adoption Services || Princess Within/Harvestime Apostolic Temple || REM Ohio/Shared Living Program || Respite @ Bay Pres || The Shepherd's Well || Walk Right In Ministries



Need assistance? Ask one of our Bay Presbyterian volunteers for help. They're easy to spot in the bright yellow t-shirts.



Free WiFi is available. Login to BAYPRES-Guest. No password is needed.

Our prayer staff will be available in the Prayer Room (located in the Gathering Area outside the Sanctuary). Please stop in to have us pray *for* you or *with* you.



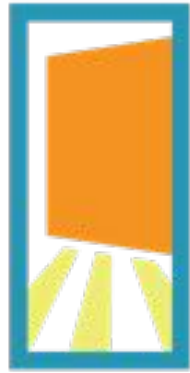
Need a little break? Take a breather in the R&R Room (located in the "Train Station" near the Children's Ministry Entrance in the east wing).

Everything that's happening on the Main Stage in the Sanctuary this weekend is being livestreamed on Key Ministry's Facebook page. Invite your friends who aren't here to join in. And don't forget to follow us on social media!



From 12:30-1:30pm on Saturday you have several options:

- Join us in the Sanctuary for the Marriage Panel
- Join us in Lakeview for the Parent/Church Luncheon Discussion
- Grab lunch from one of the many restaurants located within a few miles of the church. Please ask a volunteer if you need suggestions.



Key  
Ministry

The Key Ministry team is excited to offer this conference free of charge to everyone because of the generosity of our sponsors and individual donors.

Your contribution of any size would be greatly appreciated to help offset the costs associated with this national conference and to fund future training opportunities.

You may stop by the Key Ministry table outside the Sanctuary to make a cash, check, or credit card donation. Contributions may also be made online at **keyministry.org**.

**THANK YOU**



# Friday's Breakout Session #1: 7:45-9:00pm

---

**Accessible Gospel, Inclusive Worship** || **Barbara Newman & Tory White** || **E204-206** || Looking for new ways to introduce someone to Jesus who may not prefer methods involving only spoken words? Are you wanting ideas for building life-long habits of worship and prayer? Come to this very practical session you can implement in the home or at church. *ministry focused*

**Special Needs Ministry -- You Can Do It!** || **Stephen "Doc" Hunsley** || **Lakeview A** || Has God called you to start a Special Needs Ministry at your church, but you don't know where to begin? Whether you are a small church or a large one, this workshop will answer the questions of how, what, and why. Learn different classroom environments; types of behaviors; engaging and partnering with church staff and community organizations; and helping your church become an inclusive place for those with special needs. After this workshop you will realize that YOU can do special needs ministry at your church! *ministry focused*

**Emotional and Spiritual Support for Hurting Families** || **Barb Dittrich** || **Auburn Hall** || Do you have a family who has just received a new diagnosis or who is in a crisis situation with a loved one who has a disability? Learn the 10 most common spiritual questions for families at these times, how to address them, and how to offer practical encouragement. Strategies for ongoing support and growth will also be detailed. *ministry focused*

**The Keys to Living Well In Spite of a Mental Health Challenge** || **Brad Hoefs** || **The Fallout** || In this breakout session, Pastor Brad will explore various key elements in mental health recovery that are universally helpful to people living well in spite of their mental illness and/or challenges. *family focused*

# Friday's Main Stage Key Notes

---

## **The Values that Shape Our Movement** || **Dr. Steve Grcevich** ||

How can ministry organizations, churches and individuals with a personal call to disability ministry most responsibly steward their gifts, talents and resources to maximize their impact for God's Kingdom? The president and founder of Key Ministry identifies three guiding principles associated with the rapid growth of the disability ministry movement and reflected in the design of this conference for leaders to apply in the day-to-day operation of their ministries.

## **How Disability Ministry Can Impact a City** || **Marie Kuck** ||

So much focus is put on what we do inside the four walls of the church. But what could it look like if we took our passion and did what Jesus told us to do? GO!...into the world and share His radical love. Marie will share ways that Nathaniel's Hope has attempted to think outside the box and has been able to impact thousands in the the Central Florida community and beyond. This Quick Take will be sure to make you smile.

## Friday's Quick Takes: 7:40-9:00pm

---

## **Diversity, Disability and the Future of Christianity** || **Lamar**

**Hardwick** || The presence of diversity and inclusion carries with it a deeply spiritual dynamic that generally cannot be experienced without it. Perhaps this is why American Christianity is attempting to be much more intentional about becoming diverse. The future of the American church requires a more robust understanding of the spiritual and theological implications of disability being included in the pursuit of diversity. This session will provide three spiritual and practical strategies for the local church to develop a more diverse and more disabled church in an effort to reflect the nature and beauty of God's kingdom. *ministry focused*

**Getting Started: What You Need to Know About Envisioning a Special Needs Ministry** || **Jillian Palmiotta** || Practical steps of how to create a vision plan for the various cultures of churches and provide a plan to putting together a well thought out proposal that includes topics on: creating special environments, budgets, volunteers, and communicating with parents. *ministry focused*

**Every Church Can Be Incarnational** || **Keith Dow** || When we hear "Incarnation," we may think of theological catch-phrases, Christmas, or the Apostle John. In this session, though, we take the principle of Christ's Incarnation to the day-to-day practices of ministry. How might we vulnerably embody what we believe in the lives of people of various abilities? What does it look like to get in touch with our experiences of grief and limitation as well as the joy and celebration of sharing life together? By opening ourselves to our own embodied experience, we are better able to journey with those who experience life differently. Join Keith Dow, a Canadian pastor with a large Christian organization serving people with developmental disabilities, to explore how the Incarnation transforms our practices of church care. *ministry focused*

**How Well Can You Take a Hit?** || **Tiffany Crow** || "He hit me, he HIT me!" Did it hurt? No. All I knew was that he hit me and that was a line he should not cross. My journey starts as a first grade teacher walking a student to the principal's office in a frenzy. Some 15 years later, that same teacher has been transformed. God set me on a path that transformed, not only my career, but my heart. I now ask people that I work with, "How well can you take a hit?" As a Behavior Analyst consulting in local school districts and a part-time Special Needs Coordinator at Brazos Pointe Fellowship, I would like to share my journey of embracing problem behavior. When families are welcomed and loved because of problem behavior, such as physical aggression, instead of being ostracized and excluded, lives can be changed. *ministry focused*

# Saturday's Breakout Session #1: 9:40-11:00am

---

## What Am I Supposed to Do With This Kid? Understanding How Trauma Impacts Development and How You Can Help or Hurt the Healing || **Dr. Sherri McClurg** || The Fallout ||

Whether at home, Sunday School, or elsewhere, as families respond to God's call to care for the orphan we are seeing more vulnerable children up close and personal. It doesn't take long to realize that early childhood trauma has taken a toll on the child and traditional forms of parenting don't have the same effect. Come learn how early childhood trauma impacts development, and strategies for helping grow and nurture a child who comes from a place of hurt, mistrust, and loss. This is a great workshop for parents, foster parents, teachers, and anyone working with kids from trauma. *family focused*

## Parenting Special Siblings || **Lisa Jamieson** || Lakeview B ||

Be encouraged and inspired as we open a dialogue about the challenges, disappointments, advantages and opportunities of raising siblings in a family affected by disability. Lisa Jamieson, author of *Finding Glory in the Thorns* and founder of the Minnesota Disability Ministry Connection, will share candid perspectives about raising three children including one who has Angelman Syndrome (complex health issues and severe developmental disabilities). Topics will include sibling conflict, balancing attention, grief processing, dealing with social stigmas and misunderstanding, family vacations and managing stress. Participants will leave refreshed with basic principles and numerous practical ideas about how to enjoy more victories and deeper graces despite the reality of weaknesses in every family. *family focused*

## They Do Remember: Impact of Early Medical Trauma ||

**Jolene Philo** || E200-202 || This workshop provides basic information about trauma and PTSD in children. The first half of the session defines trauma and PTSD, debunks popular myths about the condition, and explains causes of trauma and PTSD risk factors. The second half of the workshop describes symptoms of PTSD and reviews effective methods of treatment. It also explores measures designed to prevent childhood

trauma from becoming PTSD and provides a resource list. Parents are encouraged to participate in the question and answer period at the end. *family focused*

### **What a Caregiver Really Needs || Barb Dittrich || E204-206 ||**

According to Joni & Friends Christian Institute on Disability, an excess of 80% of those with disabilities are unchurched. The spiritual health of the family begins with parents. This workshop will detail simple ways that churches can become more inclusive by beginning to serve the needs of parent caregivers. Participants will be empowered with do's, don'ts, and practical tools to apply immediately in their church homes. *ministry focused*

### **Training Volunteers to Include Children and Students with Special Needs || Stephen "Doc" Hunsley || Auburn Hall ||**

This workshop is geared towards any volunteer who might work with an individual with special needs from birth through adulthood in a ministry setting. You will learn general considerations for individuals with special needs that will allow you to be successful in working with them. We will also give you a tool box filled with crisis prevention techniques and walk you through several real life scenarios to help you feel confident and prepared to handle any situation that may arise in a special needs setting. You can easily take this back home and train your volunteers as well. *ministry focused*

### **What Can You Do to Promote Mental Health Ministry in Your Church || Catherine Boyle || Lakeview A ||**

In this session, attenders will come away with a template to help start a mental health ministry. The presentation includes: how to identify mental health champions in your faith family, recommended first steps to launch your ministry, important community contacts for your church and ideas for graciously handling resistance to mental health ministry.

# Saturday's Main Stage Key Notes

---

**What Families Need from the Churches They Attend** || **Sandra Peoples** || When Sandra's son was diagnosed with autism in 2010, their church in Pennsylvania started a special-needs ministry that reached many families and was featured in articles by Baptist Press and Christianity Today. But when their family moved to Texas, they realized how many churches still weren't able or willing to welcome their family. In her quick take, Sandra will share what they looked for each time they visited a new church. Her simple answer may surprise you.

**Puzzle Piece Living** || **Barbara Newman** || Learn from a biblical vision for individuals and communities and discover the very practical ways this perspective impacts our conversations, parenting tools, and congregational life. *ministry focused*

## Saturday's Quick Takes: 9:40-11:00am

---

**Dads Panel** || **Moderated by Brian Dahlen** || **Featuring John Felageller, Jonathan McGuire, and Jason Hague** || These dads of kids with disabilities will talk about the blessings and challenges they face and encourage other dads. Viewers (live and online) will have a chance to ask questions the panel will address! *family focused*

**The Depressed Special Needs Dad: How to Support and Understand Him** || **Jason Hague** || When his son was diagnosed with severe autism, Jason Hague became the stereotypical depressed dad: distant, powerless, and sad. Why is this picture so common? Why do special needs fathers crash so hard? And what can the church do to help restore them to a place of confidence and hope-filled vitality? In this session, Jason will pose some answers to these questions as he tells his

own story of authenticity, fellowship, hope and healing. ministry focused and family focused

## **Five Minute Vacations for the Exhausted, Wrung-Out, Frazzled**

**Parent II Jonathan McGuire II** Being the parent of a child with disabilities or special needs can be an all-consuming, 24-7, no breaks kind of responsibility. But, if we never take a break we will break - physically, emotionally, even spiritually. We need to step away and refresh so we can continue to care for our precious child(ren), but how do we do that when our child's needs are overwhelming. Through this workshop, even the most overwhelmed parent will be equipped with tools and ideas to refresh themselves, even if all they have are 5 minutes. *family focused*

## **Saturday's Breakout Session #2: 11:10am – 12:30pm**

---

### **Helping Your Child or Teen with Mental Health Issues to**

**Grow Spiritually II Dr. Steve Grcevich II The Fallout II** One in five kids in the U.S. meet criteria for at least one mental health disorder. Common attributes associated with ADHD, anxiety disorders, mood disorders and post-traumatic stress often present subtle, but very real barriers to church participation and spiritual maturity. In this session, we'll help pastors, ministry leaders and parents recognize the ways in which common mental health conditions may interfere with spiritual growth and identify strategies for helping kids impacted by mental illness to become the adults God created them to be. *ministry focused and family focused*

### **Straight Talk on Coping with Special Needs Parenting Stress**

**II Jolene Philo II Auburn Hall II** Research shows that the stress level of parents raising kids with autism is close to that of combat veterans, This workshop briefly explores both why raising kids with special needs is stressful and why parents seldom acknowledge their daily, ongoing stress. The majority of the workshop will summarize practical strategies parents can implement to cope with and reduce stress, discuss when to seek professional help, and review therapy options proven to effectively minimize stress. *family focused*

**Outreach Strategies in Special Needs Ministry** || **Beth Golik** || **E204-206** || Is your church looking for ideas to engage families with special needs in your community? This workshop will equip you with ten event suggestions and provide you with implementation strategies with a focus on partnering with community organizations. You'll be encouraged and prepared to take the next step when you get back to your church. *ministry focused*

**Disability Ministry: Beyond Children's Ministry** || **Ryan Wolfe** || **Lakeview B** || What can ministry look like for teens, young adults, and adults? *ministry focused*

**Every Church Can Do Something About Problem Behavior** || **Tiffany Crow** || **E200-202** || You are only scratching the surface of special needs ministry if you limit your outreach to those that are well behaved. It is the families experiencing problem behavior that are a true spiritual, emotional, and physical battlefield. This is your opportunity to show them Jesus! Participants will gain:

- A knowledge of how the environment shapes behavior (Participants will be able to objectively observe problem behavior.)
- A knowledge of how to change the environmental event to change unwanted behavior (Participants will be able to determine tangible steps to change behavior.)
- Steps to manage small yet persistent problem behavior (i.e. interrupting, off topic or inappropriate comments, leaving assigned area, touching others.)
- Steps to manage significant problem behavior (i.e. physical aggression, running out of the building/designated areas, yelling, cursing, self-injurious behavior.)
- Steps to find and keep the right volunteers (It's all about the personality not the experience.) *ministry focused*



## **Inclusion in Christian Schools: The Why and the How II**

**Barbara Newman II W211** II Discover 10 key tools and principles in equipping Christian Schools to welcome each child. Learn what multiple Christian Schools in places all over the US have discovered: The JOY of being one body together in Christ! *ministry focused*

## **Saturday's Quick Takes: 11:10am-12:30pm**

---

**Moms Panel II Moderated by Sandra Peoples II Featuring Sarah Broady, Sarah McGuire, and Sara Hague** II These moms will talk about topics specific to moms of kids with disabilities. Viewers (live and online) will have a chance to ask questions the panel will address! *family focused*

**Indispensable! II Mona Fuerstenau** II Grow your ministry to and for people with disabilities, into ministry alongside them and ultimately by them. Scripture support and ideas to challenge and elevate your ministry. *ministry focused*

**The Princess Within II Lena Hartman** II I teach our "Special Angels" class at our church. We just hosted a Princess Within Special Needs Noncompetitive Pageant, which had a huge impact on the approximately 150 people in attendance. It focused on inner beauty which everyone has. Each girl (about 22) received a crown and sash and was celebrated and escorted by a uniformed policeman or fireman. I talked about our inner beauty and what it is and how we all are princesses as we are a daughter of a great King. We all have physical flaws of some sort, but our inner beauty is what matters and makes us most beautiful. *ministry focused*

# Saturday's Marriage Panel: 12:40-1:30pm

---

**Marriage Panel** || Moderated by Sandra Peoples || Featuring Jonathan and Sarah McGuire and Jason and Sara Hague || **Main Stage** || These husbands and wives will chat about topics related to marriage and raising kids with disabilities. Viewers (live and online) will have a chance to ask questions the panel will address! *family focused*

## Parent/Church Luncheon Discussion: 12:30-1:30pm in Lakeview Hall

---

We are hosting a free luncheon discussion on how churches and families can work together long-term to form faith-based communities that provide housing, jobs, transportation, and spiritual encouragement. If you are interested in joining the discussion to seek a collaborative solution, please join us in Lakeview Hall.

Special thanks to Robin Hilsmeier for moderating the discussion and to the Outreach Committee of Bay Presbyterian Church for funding the lunch.



**Inclusion  
Fusion**  
*Live!*  
Every Church Can Do Something

## Saturday's Quick Takes: 1:35-1:50pm

---

**Living with Autism and Growing in Faith II Ron Sandison II** Ron Sandison an author, motivational speaker, and minister shares his amazing journey of autism and faith. He shares his personal challenges having autism and how God helped him overcome by learning social skills and handling sensory issues. Ron teaches families and church leadership ways to help individuals with autism and disabilities to grow spiritually. While writing his book *A Parent's Guide to Autism* Ron interviewed over forty young adults with autism and over forty professionals in the autism community and he share the wisdom he gained from these interviews. He also will teach practical methods for ministering to young adults with autism and building a fruitful autism ministry. *family focused and ministry focused*



[facebook.com/keyministry](https://facebook.com/keyministry)



[facebook.com/NotAloneParents](https://facebook.com/NotAloneParents)



[@keyministry](https://twitter.com/keyministry)



[vimeo.com/keyministry](https://vimeo.com/keyministry)



[@keyministry](https://instagram.com/keyministry)



[pinterest.com/keyministryorg](https://pinterest.com/keyministryorg)

## Saturday's Breakout Session #3: 1:40 – 3:00pm

---

**Redefine Special** || **Melanie Gomez** || **E200-202** || What if your “bundle of joy” is wrapped in a diagnosis that seems anything but joyful? Melanie Gomez has been there herself, and offers a way to find peace, hope and yes, even joy, within the storm. This workshop will cover five of the most common emotional challenges faced by parents of children affected by disability, and address each with a specific biblical response to replace fear with courage, disappointment with contentment, anxiety with peace, hopelessness with hope, and sorrow with joy. Be prepared to redefine the word special. *family focused*

**Is That True? Five Common Beliefs that Make Hard Times Harder** || **Jonathan McGuire & Sarah McGuire** || **The Fallout** || In the Christian community there are often things we hear or say to each other in an effort to encourage, that sound good and we accept as Biblical fact but in fact make life's challenges more difficult. In this workshop, we will look at five common sayings, comparing them against scripture, and look at the impact they have on the parents of children impacted by disability. Through this workshop, church leaders will be better equipped to come alongside parents who are struggling and parents will find comfort in realizing their faith is not weak during these challenges. *ministry focused and family focused*

**Diversity, Disability and the Future of American Christianity** || **Lamar Hardwick** || **Auburn Hall** || The presence of diversity and inclusion carries with it a deeply spiritual dynamic that generally cannot be experienced without it. Perhaps this is why American Christianity is attempting to be much more intentional about becoming diverse. The future of the American church requires a more robust understanding of the spiritual and theological implications of disability being included in the pursuit of diversity. This session will provide three spiritual and practical strategies for the local church to develop a more diverse and more disabled church in an effort to reflect the nature and beauty of God's kingdom. *ministry focused*

## **How to Be a Special Needs Advocate in Children's and Youth Ministries** || Sarah Broady || E204-206 ||

Our children should all have a place at church. In order to accomplish this, we must both prepare our children for Sunday school or youth group, as well as preparing church leaders for our children. For parents of children with special needs who want their child to be able to attend church classes and activities, our advocacy as parents continues from the realm of school to the realm of church. From dealing with difficult church leaders to talking about the blessing of church leaders who "get it" and include our children to the fullest extent, we will talk through different strategies parents can take to address a variety of problems or potential issues with their church leaders. Parents will leave encouraged and equipped with ideas to take home with them in order to enable their children to be included in their church ministries. *family focused*

## **Starting a Special-Needs Ministry** || Jillian Palmiotto ||

Lakeview B || Jillian will cover the steps of how to create a vision plan for the various cultures of churches and provide a plan to putting together a well-thought out proposal that includes: creating special environments, budgets, volunteers, communicating with parents, etc. *ministry focused*

## **A Flexible Model for Inclusive Special Needs Ministry** ||

Jason and Sara Hague || Lakeview A || In this session, Pastors Jason and Sara Hague will demonstrate how their church developed an adaptable children's ministry, flexible enough to meet the numerous and changing needs of the special needs families in their congregation. What began as a Sunday morning sensory room for their severely affected son with autism has expanded into a ministry that allows many children with special needs to be included in typical Kids' church classrooms and the worship service, to become teachers' assistants, and even to learn job skills in special internships. They will also discuss strategies for convincing pastors how important and doable this type of ministry is, and for mobilizing churchgoers to the cause. *ministry focused*



**Catherine Boyle** has been impacted by mental health issues her entire life, including her own struggles with anorexia, bulimia, anxiety and depression. Catherine authored *Hungry Souls: What the Bible Says About Eating Disorder*, and helped launch a ministry home for women with eating disorders. In 2015, Catherine founded Outside In Ministries, focusing on how the church can minister to and with people with mental health issues.



**Sarah Broady** is a mother passionate about encouraging parents of children with special needs. She is married to her college sweetheart, Kyle Broady, who is the Pastor of Worship at their church in eastern Kentucky, and they have three boys. Their second son was diagnosed with autism at the age of 2, and although it turned their world upside down, God is using it for His glory in more ways they could have ever imagined. Sarah blogs about her life raising a son with autism, whom she now homeschools, at Hope in Autism, as well as Key Ministry's Special Needs Parenting blog.



**Tiffany Crow** is a Behavior Analyst with a background in teaching Early Childhood and Special Education students. Since 2014 she has served as the Special Needs Coordinator at Brazos Pointe Fellowship. She has earned a Master Degree in Behavior Analysis from the University of Houston-Clear Lake and a Bachelor Degree in Early Childhood Education from Lamar University. She resides in Lake Jackson, TX with her husband Toby and two young daughters. Tiffany is passionate about the population she feels called to serve and believes that every life should be celebrated as a part of God's perfectly planned design.



**Brian Dahlen** taught history at a public high school near Minneapolis, where he was co-host and producer of a weekly radio program. After teaching six years and graduating with a master's degree in education, Brian joined Moody Radio in Chicago. While working as a radio host, producer, and co-host of a weekly podcast, Brian also served as adjunct professor of communications at Moody Bible Institute. He is co-host of Brian and Kathleen Mornings. He lives with his wife and five children in Broadview Heights, Ohio



**Stacy Deters** is the Co-director of the Inclusion Program at Zeeland Christian Schools in Zeeland, MI. She recently received her Master's in Autism Spectrum Disorders from Michigan State University. Stacy and her husband have two young boys. Her role includes helping to facilitate support services for students included in 1st-8th grade and most of all, she is passionate about celebrating the unique gifts that each child offers and the way God knits us together to support one another.



**Barb Dittrich**, author and speaker, founded Snappin' Ministries, a non-profit serving parents raising children with chronic illness, disabilities, and special needs in 2002. She joined the team of Key Ministry as Director of Education in 2018. Additionally, she has worked as a citizen legislative advocate in the bleeding disorders and rare disease communities. Barb is married to her husband of over 25 years, Steve, and raises their 3 growing children.



**Keith Dow** has been privileged to participate in the faith journeys of people with intellectual and developmental disabilities in Canada in his role with the Organizational and Spiritual Life team at Christian Horizons. He studied philosophy at a small monk-run university in Ottawa and is now completing his PhD in theology through Vrije Universiteit in Amsterdam with ethicist Hans Reinders. Keith is a credentialed pastor with BIC Canada and lives near Ottawa, Ontario with his wife, three children and their weirdo dog, Milo. He has a passion for seeing the Church transformed by the gifts of people of diverse abilities.



**John Felageller** lives in Northbrook, IL with his wife Elizabeth and their son Christopher (ASD), and is currently a Second Grade Teacher at a Charter school in North Chicago. John's family has been extremely blessed by all the faith based outreach that they have experienced, both from their own churches and through organizations like Joni and Friends. John and his family are continually seeking to lift up other Special Needs Families, from creating Life Groups to hosting a monthly Dads support meetup. John began writing professionally for a Faith-based Special Needs Blog in 2017, and is now a member of the Key Ministry Not Alone writing team, and sees his writing as not just a hobby but also something he seeks to use as an outlet for parents (especially dads!) to find comfort.



**Mona Fuerstenau** is a disability advocate with over 30 years in the field. She speaks across the country working to engage and equip communities for meaningful participation by those with disability. She came to her current position as Director of Ministry Partnerships with Bethesda Lutheran Communities by way of her passion for sharing Jesus, her enthusiasm for Asset Based Community Development, her work as a retired Speech language Pathologist and as the parent of two young adult diverse learners.



**Beth Golik** has been the Ministry Coordinator for Key Ministry since 2016. In addition to her role with Key, Beth serves as the special needs ministry director at Bay Presbyterian Church in suburban Cleveland. She has a passion for connecting people to resources through networking, relationship building, and social media. Beth and her husband Rich are the parents of three teenage boys.



**Melanie Gomez** has been married for 25 years and is the mother of two young men, one of whom was born with a rare genetic disorder. Their family of four resides in sunny South Florida where Melanie passionately pursues opportunities to share God's message of joy, hope and purpose with every special needs mom. She lives out her calling through speaking engagements, blogging at *RedefineSpecial.com*, missions work, and her recently published devotional titled "Bundle of Joy" which is available on Amazon



**Dr. Steve Grcevich** (MD, Northeast Ohio Medical University) serves as the founder and President of Key Ministry. He is a child and adolescent psychiatrist who combines over 25 years of knowledge gained through clinical practice and teaching with extensive research experience evaluating medications prescribed to children and teens for ADHD, anxiety, and depression. Dr. Grcevich has been a presenter at over 35 national and international medical conferences and is a past recipient of the Exemplary Psychiatrist Award from the National Alliance on Mental Illness (NAMI).



In his role as President of Key Ministry, Steve serves the primary vision caster and spokesperson for Key and plays an important role in Key's efforts to develop collaborations with church leaders, professionals and organizations both within and outside the disability ministry movement. He is responsible for strategy and oversees the implementation of Key's ministry plan. He blogs at Church4EveryChild, is a regular contributor for Moody Radio Cleveland and frequently speaks at national and international ministry conferences on mental health and spiritual development. His first book, *Mental Health and the Church*, was published by Zondervan in February 2018.

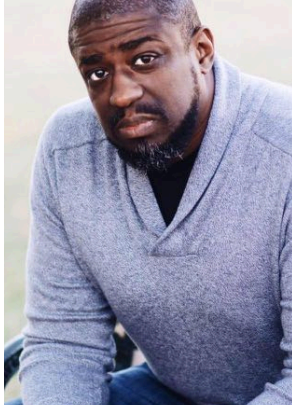
Steve and his wife Denise live in Chagrin Falls, Ohio. They have two daughters - Leah and her husband (Max) are students at the Alabama College of Osteopathic Medicine, and Mira is attending Belmont University and is majoring in psychology. Steve's work serves as a distraction from the abysmal performance of Cleveland's professional sports teams.



**Jason Hague** is a pastor and author who writes about the intersection of faith, fatherhood, and autism. He has blogged for more than five years about his relationship with his son Jackson, who is severely autistic. As the associate pastor of a mid-sized non-denominational church in the Pacific Northwest, Jason worked alongside his wife Sara (the church's children's pastor) to pioneer a flexible and inclusive model of children's ministry. His first book, "Aching Joy: Following God through the Land of Unanswered Prayer," will be released through NavPress this October. Jason lives in Junction City, Oregon with his wife and five children.



**Sara Hague** is a children's pastor, happy wife, and homeschooling mother of five talented children including one on the severe end of the Autism Spectrum. She and her husband, Jason Hague, have developed a thriving special needs ministry in their local church. Sara has written curriculum and published articles in Focus on the Family Magazine, Clubhouse Jr., Christian News Northwest, and The Upper Room.



**Dr. Lamar Hardwick** is a father, husband, pastor and best selling author. Lamar holds a Master of Divinity degree from Emory University as well as a Doctor of Ministry degree from Liberty University School of Divinity. In 2014, after years of silently struggling with social anxiety and sensory processing issues, Dr. Hardwick was diagnosed with Autism Spectrum Disorder. He is the author of *Epic Church* as well as his best selling book, *I am Strong: The Life and Journey of an Autistic Pastor*. Lamar is the pastor of New Community Church located in Lagrange, GA.



**Lena Hartman** is Married with 3 children. She is a Member of Harvestime Apostolic Temple in Hartville Ohio. Lena is a registered nurse working between acute dialysis and the ICU. She Loves helping people to smile and feel better. Her driving force and passion is helping people, especially those of special needs to smile and feel better in the presence of God, showing them how to serve Him and accepting His salvation.



**Dr. Stephen "Doc" Hunsley** is the SOAR Special Needs Director and Pastor for Grace Church in Overland Park and Olathe, Kansas. Doc started Grace Church's special needs ministry in 2011, helping it to become a hallmark ministry for the church. The SOAR (Special Opportunities, Abilities, and Relationships) special needs ministry serves over 700 individuals with special needs. You can follow SOAR on Facebook: [SOARSpecialNeedsMinistryAtGraceChurch](https://www.facebook.com/SOARSpecialNeedsMinistryAtGraceChurch) or Connect with Doc on Twitter: [@DocHunsley](https://twitter.com/DocHunsley). Visit [GraceChurch.com/SOAR](https://www.VisitGraceChurch.com/SOAR)



**Lisa Jamieson** is an author, speaker, and advocate who serves as executive director of Walk Right In Ministries and leads the Minnesota Disability Ministry Connection. Her children's book, *Jesus, Let's Talk*, helps all children, including early readers and people with developmental differences, to learn the basics of prayer and personal connection with Jesus. Lisa and Larry have three grown children. Their daughter, Carly, has Angelman Syndrome and lives happily with them at home in Minnesota. You can learn more about Lisa's ministry at [lisajamieson.org](https://www.lisajamieson.org).



**Marie Kuck** is Co-founder of Nathaniel's Hope, a ministry that celebrates kids with special needs (VIP kids) as well as educates and equips the local church to welcome and minister to VIP kids and families.

Marie and her husband, Tim, were introduced into the world of disability when their son Nathaniel was born with multiple special needs, requiring 24/7 care. At age 4 ½ he had a change of address from earth to heaven. Marie's experience as Mom to

Nathaniel as well as serving on church staffs in youth ministry for 10 years fuels her passion to help ordinary people overcome their fear and be intentional in their ministry. Nathaniel's Hope is building a national Buddy Break network of churches providing FREE respite care to VIP families.



**Dr. Sherri McClurg** is the CEO of New Horizons for Children an international orphan hosting program, as well as the Managing Director of Family Center by the Falls, a mental health practice for children and adolescents. She has her doctorate in clinical psychology and worked for many years with children and adolescents who have experienced trauma, anxiety, or other concerns. In addition to working with vulnerable children, she currently serves with the John Maxwell Team on the President's

Advisory Council, speaking and training on personal growth and leadership around the world. She and her husband have been married for 20 years, and raising 3 beautiful children, one of which has profound special needs.



**Jonathan McGuire** and his wife, Sarah, currently reside in Northeast Indiana and have been married for 16 years. He has two sons, ages 11 and 13. His journey in special needs began with the birth of their youngest son. He has his M.A. in counseling from Grace Theological Seminary and has served with Wycliffe Bible Translators for 13 years. During this time, he started and lead the staff care program for Wycliffe's affiliate, Seed Company. Jonathan and Sarah are the founders of Hope Anew, a ministry

that comes alongside the parents of children impacted by special needs on a spiritual and emotional level through speaking, writing, and workshops.



**Sarah McGuire** has her M.A. in Counseling from Grace Theological Seminary and her M.S. from Michigan State University. She served for 13 years as a missionary with Wycliffe Bible Translators. Currently, Sarah serves with her husband Jonathan as the founder of Hope Anew, guiding the parents of children impacted by special needs to Christ-centered hope and healing on a spiritual and emotional level. Sarah's most prized title is that of "Mom." She resides in Northeast Indiana, homeschooling her two sons, the youngest of whom, has his own unique needs.



**Barbara J. Newman** is the Director of Church Services and Teacher Consultant for CLC Network, whose mission is to equip congregations and schools to glorify God through purposeful, innovative inclusion of persons with varied abilities. She is the author of more than 20 books and resources related to disability ministry including *Accessible Gospel*, *Inclusive Worship*.



**Jillian Palmiotta** is the Director of the Unlimited\* Special Needs Ministry at Mount Paran Church in Atlanta, GA. The ministry serves over 140 families. In 2016, Mount Paran began hosting the Together Conference that is designed to equip ministry leaders to begin or improve their special needs ministries. Jillian has a passion for training church leaders and volunteers, and she loves serving the families God has given to her.



**Sandra Peoples** In her position with Key Ministry, Sandra is responsible for writing and editing the content for our three blogs, managing our writing team of over twenty parents and ministry leaders, and coordinating our social media accounts. Sandra's family resides outside of Houston, Texas where her husband (Lee) is a pastor and she serves as the co-director of the special-needs ministry. They have two sons, David and James. Sandra has a degree in English from Hardin-Simmons University and a Master of Divinity degree from Southeastern Baptist Theological Seminary. She is the author of *Held: Learning to Live in*

*God's Grip* (a Bible study for special-needs parents) and the upcoming release, *Unexpected Blessings: The Joys and Possibilities of Life in a Special-Needs Family*.



**Jolene Philo** is the mother of a son born with life-threatening special needs. In her twenty-five years of teaching experience, she worked with children with special needs in the classroom. She has written several books about caregiving, parenting children with special needs, and special needs inclusion ministry. She speaks at special needs parenting conferences around the country, conducts accreditation workshops for foster and adoptive parents, and trains special needs children's ministry leaders and volunteers. Jolene blogs about special needs at *DifferentDream.com*. She and her husband live in Iowa.



**Ron Sandison** works full time in the medical field and is a professor of theology at Destiny School of Ministry. He is an advisory board member of Autism Society Faith Initiative of Autism Society of American and board member of The Art of Autism. Sandison has a Master of Divinity from Oral Roberts University and is the author of *A Parent's Guide to Autism: Practical Advice. Biblical Wisdom* published by Charisma House. Ron and his wife, Kristen, reside in Rochester Hills, MI, with a two year old daughter, Makayla.



**Victoria White**, church services coordinator at CLC Network, has been involved in education and ministry for over twenty years. Tory has written curriculum for her church's children's ministry, as well as for Friendship Ministries' adult inclusive Bible study, TOGETHER. She has edited several books, including CLC Network's latest publication, *Accessible Gospel, Inclusive Worship*. Tory brings her experience in homeschooling, a degree in education, a decade of supporting inclusion at Zeeland Christian School, and victory over a debilitating chronic illness to serve families and churches in their efforts to include individuals of all abilities with excellence.



**Ryan Wolfe** is the Director of Program Development for Ability Ministry. It is Ryan's passion to equip and empower churches, organizations, and individuals to reach their disability communities for Jesus. Ryan comes to Ability Ministry with 15+ years of ministry experience. He previously worked at First Christian Church in Canton, Ohio as their full-time Disability Pastor. He also worked as a Church Consultant for Key Ministry. Ryan is an ordained Pastor. Micah 6:8 and Proverbs 31:8 best describe Ryan's commitment to life and ministry. He is available for speaking, training, and consultation.



**Kathleen Zion** grew up in Cleveland and has been active in theatre and media for more than fifteen years. After graduating from Wright State with a fine arts degree, Kathleen moved to Chicago to study improvisation and comedy at the Second City Conservatory program. While in Chicago, Kathleen also studied in a creative writing program and worked with a variety of sketch comedy groups. Kathleen is co-host of Brian and Kathleen Mornings and is married to Nathan.

@graceenabled      fb.com/graceenabled

# FREE SPECIAL NEEDS Spring Fling!

Food - DJ - Karaoke - Games - Crafts - Sports  
Face Painting - Photobooth & More!

Volunteers Needed!

*Saturday April 21, 2018*  
*5:30 - 9:00*

CLEVELAND BARONS ARENA | 5310 HAUSERMAN RD  
CLEVELAND | OHIO 44130

E: [graceenabled139@gmail.com](mailto:graceenabled139@gmail.com) | P: 216-570-9781 or 440-390-8567

## NOTES



We are deeply grateful for the support and encouragement provided by **Bay Presbyterian Church**. To the staff and congregation of Bay Pres: **THANK YOU** for your commitment to this ministry, not just within the walls of this building, but in northeast Ohio and beyond.



**LEEK**  
Pipe Organ Co.

We'd also like to thank the **Leek Pipe Organ Company** for being the Technology Sponsor for Inclusion Fusion Live.