

Regional Connections Planning Grant

Allendale-Beacon Hill Trail Extension

Tri-County Regional Planning Commission

March 24, 2016

Dan Flint

Lower Allen Township

Lower Allen Township

Allendale-Beacon Hill Trail Extension

- Comprehensive Plan Update: 2006
 - Survey and Public Meeting feedback
- Ped/Bike Committee appointed by Board of Commissioners
 - Neighborhood associations
 - School district
 - Bicycle shop owner
 - Parks and Recreation Board members
 - Various Township departments

Lower Allen Township

Allendale-Beacon Hill Trail Extension

- Ped/Bike Committee process/tasks
 - Destinations and potential connections
 - Barriers, and opportunities to cross them
 - Assets
 - Preferred routes
 - Projects and priorities
 - Design and construction standards
 - Roads assessment for safe biking

Lower Allen Township

Allendale-Beacon Hill Trail Extension

- Ped/Bike Committee outcomes
 - Ped/Bike Network Map – existing and future
 - Prioritized list of projects
 - Review of Network Map by Township Planning Commission and Parks and Recreation Board
 - Presentation of the Network Map to Board of Commissioners

Lower Allen Township

Allendale-Beacon Hill Trail Extension

- Actions to implement the Network Plan
 - Adoption of Official Map, showing all proposed off-road routes
 - Revisions to the SALDO
 - Construction of high priority and/or easier implementation projects

Lower Allen Township

Allendale-Beacon Hill Trail Extension

- Original segment constructed with BH development sections
- 2013: Eastern Cumberland County Regional Trails Master Plan completed (with RC funds)
- 2013: Trail segment connecting neighborhoods constructed (with PCTI funds)
- 2015: Preliminary design and permitting completed for Trail Extension (with RC funds)
- 2015: TAP funds approved for construction of final segment. Currently in final design.

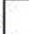
Allendale-Beacon Hill Trail



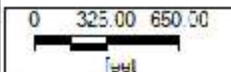
Lower Merion Township
2210 Gettysburg Road
Carnegie, PA 15101
(717) 275-7575



Legend

Boundary 

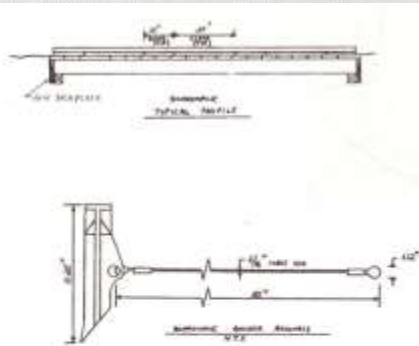
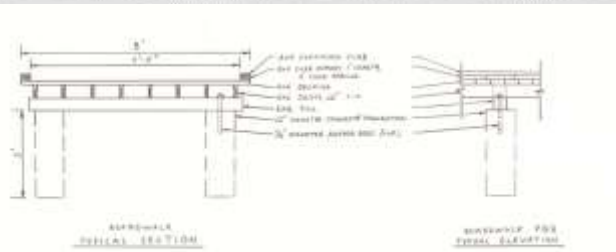
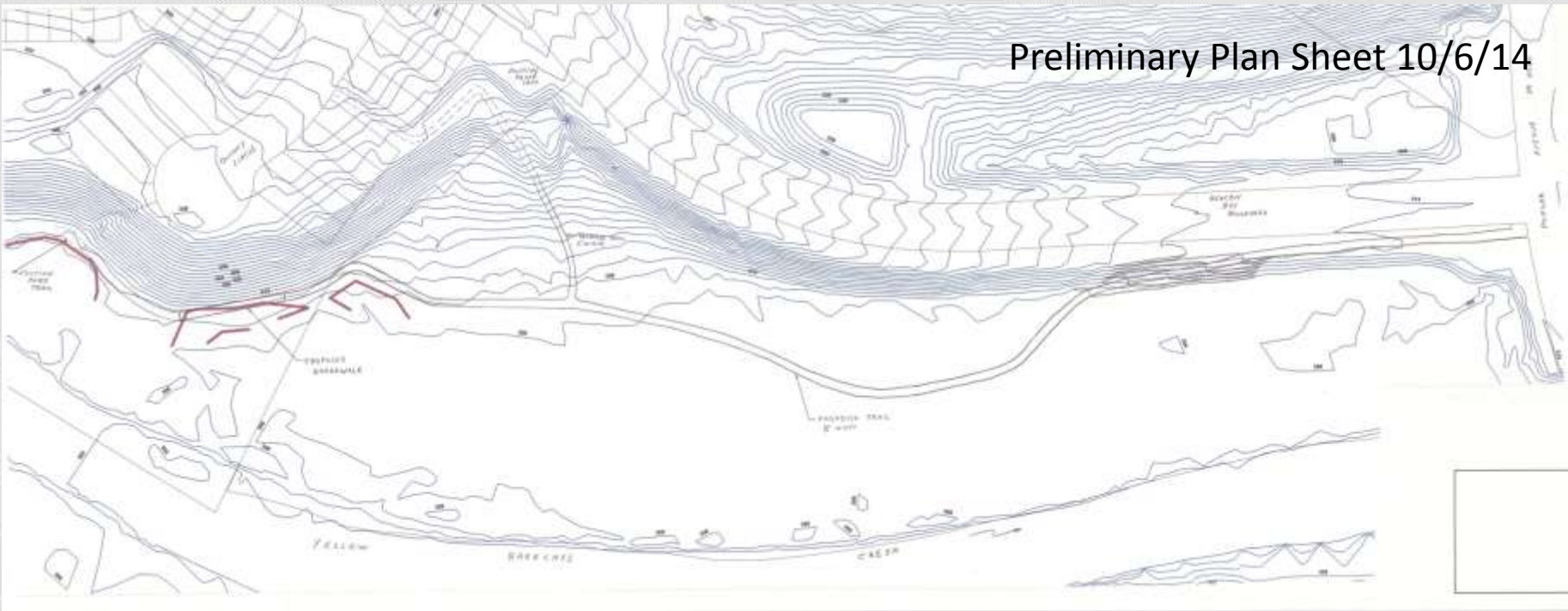
Stream 



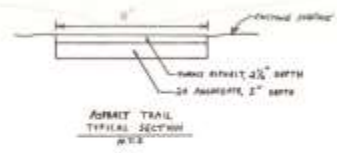
This map was produced with various techniques and collection methods. The accuracy of the features displayed herein may vary depending on the source. All information is provided for informational purposes only. All information used herein is the property of the Township.



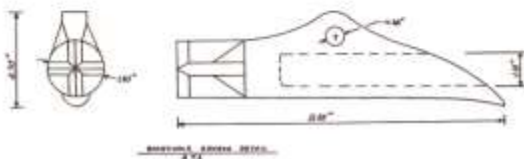




NO.	CAMBERLAND		
SECTION NUMBER	SECTION	LOWELL ALLEN TOWNSHIP	DATE



Preliminary Detail Sheet 10/6/14



Note: Slide added after presentation by TCRPC.

Questions?

Daniel J. Flint, P.E.
Township Engineer
Community Development Director
Lower Allen Township
dflint@latwp.org
717-975-7575 ext. 1101