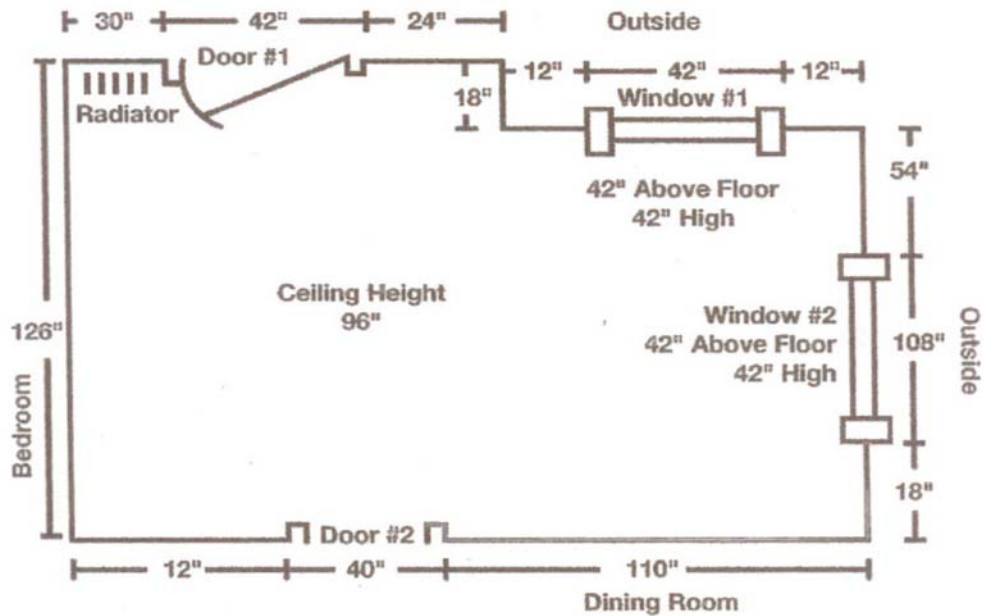


## How to Measure

This drawing is a guide for helping you draw and measure your kitchen or bath.



Here are some important tips.

- If you are remodeling, do not include cabinetry or other furniture that will be removed in your measurements
- Draw in any obstructions such as radiators, pipes, or plumbing that you either can not, or do not, want moved.
- When measuring doors and windows the trim is considered par of the door or window.
- Measure the ceiling height and write it in the center of your drawing.
- Measure from the floor to the bottom of each window and also measure the overall window height.
- Next to each wall, write the name of the adjacent room.