



St. Francis Xavier (College) Church

The Jesuit Parish in the Heart of St. Louis

3628 Lindell Blvd, St. Louis, MO 63108

314-977-7300

sfxstl.org

May 12th, 2024 Solemnity of The Ascension of the Lord Seventh Sunday of Easter

LITURGY SCHEDULE

Saturday: 5:15 pm, Sunday: 8:00 am, 10:30 am.

Online Masses will be posted on our YouTube channel. Subscribe here: tinyurl.com/collegechurchmass

Weekday Masses: 7:15 am and noon Monday through Friday, all in main church. (7:15 am Mass only on national holidays.)

Sacrament of Reconciliation: Mondays through Fridays, 10:45 am through noon.

MISSION STATEMENT

We, the members of St. Francis Xavier College Church, form a welcoming Jesuit parish community. As followers of Jesus Christ, we praise God, love our neighbors as ourselves, celebrate liturgy and the sacraments, engage in lifelong formation and proclaim God's reign of justice, mercy and peace.

PARISH INFORMATION**E-MAIL ADDRESS:** church@sfxstl.org

The Parish Center is closed if St. Louis City Schools are closed due to bad weather. Activities and events are also cancelled.

Hours: Monday - Friday 8:30 am to 4:30 pm, Saturday we are closed & Sunday: 8:30 am to 1:00 pm.

Bulletin Notices: must be submitted to church@sfxstl.org by noon on Thursday, ten days before the bulletin date. Holidays require additional time.

Infant Baptisms: Visit the Baptism page on the SFX website, www.sfxstl.org/baptism-1, for information on infant baptisms and required preparation class. Baptisms are celebrated on the first and third Sunday of the month, at 12 pm. Contact frtim@sfxstl.org with questions.

Christian Initiation of Adults: contact Joe Milner at 314-977-7305 or joseph.milner@slu.edu

Marriages: contact Sandy Hauck at 314-977-7303 for scheduling and preparation information.

Funerals: contact Fr. Tim McMahon at frtim@sfxstl.org or 314-977-7300.

Disability Access: Our church has an elevator and hearing assistance system. Please see an usher for assistance.

Parish Registration: Available online at sfxstl.org/parishioner-registration or at the Parish Center front desk. For questions email church@sfxstl.org.

Youth Faith Formation: Catechesis of Good Shepherd classes are available for preschool through 6th grade level students. Traditional religious education classes are available for grades 1 through 8. Classes meet September - May on Sunday mornings. Contact Jennifer Quick at jennifer@sfxstl.org or Julie Kilian at julie@sfxstl.org for more information.

Safe Environment Program Compliance contact Terry Edelmann at terry@sfxstl.org.

To reach the Pastoral Council, email sfxpc@sfxstl.org.

PASTORAL STAFFDirector of the Work

Katie Jansen
314-977-1954
katie@sfxstl.org

Canonical Pastor

Tim McMahon, SJ
314-977-7310
frtim@sfxstl.org

Associate Pastor

Tucker Redding, SJ
frtucker@sfxstl.org

Bulletin Editor

Camille Smith
bulletin@sfxstl.org

Christian Initiation and Adult Formation

Joe Milner
314-977-7305
joe@sfxstl.org

Liturgy

Joe Milner
Mary Seise
mary@sfxstl.org

Office Manager

Joyce Miller
314-977-7302
joyce@sfxstl.org

Youth Faith Formation

Julie Kilian
314-977-7301
julie@sfxstl.org

Jennifer Quick
jennifer@sfxstl.org

Social Ministry

Christine Dragonette
314-977-7309
christine@sfxstl.org

Regional Access Coordinator

Madeline Powers
314-282-7205
madeline@sfxstl.org

Outreach Coordinator

Cynthia Enghauser
outreach@sfxstl.org

Director of Wedding Ministry, Young Adult Faith, and Marriage Preparation

Sandy Hauck
314-977-7303
sandy@sfxstl.org

Choir Director, Music Ministry

Ray Sherrock
rsherrock@desmet.org

Director of Wedding Music & Accompanist, Music Ministry

Sue Martin
314-977-7313
sue@sfxstl.org

Pastoral Council Co-Chairs

Jen Hahn-Petruso and Aimee Wittman
sfxpc@sfxstl.org

Pastoral Care Ministry

Bridget Brennan
314-313-0613
joy@canainstitute.org

PRAY FOR THE SICK

Anonymous Faculty member
 Winnie Agniel
 Mary Kate Agniel
 Dave Ampleman
 Margaret Baughman
 Harry M. Byrne, O.P.
 Maureen Carney*
 Tara Chandler
 Madeline Dames
 Tom Engelhardt
 Virginia Fister
 Steve Frank*
 Joanie Hasser*
 Butch Henning*
 Yvonne Jayasuriya
 Terry Kippenberger*
 Uly Labilles
 Donna Leach-Heimos
 Jack Malone
 Tom McDermott
 Eddie McDevitt
 Kathy Mayer
 Angie Menard*
 Karena Menard*
 Don Needham
 Rea O'Neill
 Terry O'Toole
 Mark Roddy*
 Alicia S.
 Mikell S.
 Art Schierhoff
 Mark Segovia
 Fr. Gary Seibert, SJ*
 Greg Stephen
 Robert Wilmott
 * Long-term

Prayer requests to:

church@sfxstl.org

Or visit sfxstl.org, and find the form under "Parish Life."

Join our prayer group on Zoom,

Friday mornings at 9:

Contact Bridget Brennan at

joy@canainstitute.org for info.

A reflection from Parishioner Sandy Spencer



Friends, this is a Mother's Day story.

This story comes back to my memory because it is Mother's Day. With a special heart, mothers come to know that community and belonging are a right for every human being. The nurturing, life-giving quality of LOVE is not biologically, nationally, or racially determined. Mothers know this from their hearts.

This Mother's Day, I go back in memory to Guatemala. I remember Bonifacio Coz. He was 5 months old when his tuberculous grandfather hobbled into the clinic with him. Bonifacio's mother died – maybe a week before. The father was in the army.

Boni weighed 3½ pounds. He did not look human. The fight for life in this little person was incredible. Every two hours, 1½ ounces of milk – after every feeding – vomiting – diarrhea. And yet – he lived.

A young Indian mother whose own child was very ill was watching Bonifacio. After two days she said, "That little boy is hungry for more than milk from a bottle. He needs to feel a heart that beats with his own."

"What do you want to do?"

"I want to give him my own breast to feed from; I want his hand to feel my heart. I want to carry him in my shawl so he learns how to live as we humans do. I have enough milk and enough love for many."

No questions asked.

I remember how Bonifacio grew in weight, in response. He was visibly healing. One day, around one year of age, this small boy – laughed. He had beheld his mother. This mother had taken this child into her own heart-home. And Bonifacio moved into the Parish orphanage where he continued to be nurtured and cared for; educated and raised.

Blessing to all Mothers who have given life, nourished and supported life unto the third and fourth generations. Our gratitude, prayer and love.

PRAY FOR THE DECEASED



With the hope of the Resurrection, we ask that you remember in your prayers all those who have recently died, including:

- Ed Holthaus, Brother of Jane Nix
- Parishioner Jack Malone, Husband of Meg Malone
- John McGrail, Brother of Jane Webre
- Larry Samuels, Husband of Lucia Samuels

May they and all the departed share in the peace and joy of God's presence forever.



Antiracism at College Church

At College Church, antiracism is an expression of our recognition that all are created in the image of God. As such, we respond—personally and collectively—to the call to identify, and to actively challenge, structures and systems that devalue people on the basis of race, and to practice restoration in the pursuit of justice.

Jewish Heritage Month & Recognizing Rabbi Susan Talve

Jewish American Heritage is celebrated in the month of May, so designated by President George W. Bush, in 2006, to celebrate the contributions of Jewish Americans to our nation. Jewish people were among the earliest European residents of North America. In 1654, fleeing persecution from Portugal, a group of 23 Jews arrived in New Amsterdam, now known as New York City. While seeking the same religious liberty as other settlers, they faced obstacles and restrictions and were often the target of bias and scapegoating as they experienced in Europe.



Over the past 370 years, Jewish Americans have served in government and the military, won Nobel prizes, headed universities and corporations, advanced medicine, created and performed in enduring works of performing and visual art, written great American novels, and served as civic, spiritual, and social leaders.

Rabbi Susan Talve is a leader in the St. Louis community whose ministry demonstrates a commitment to social and racial justice. She is the founding rabbi of Central Reform Congregation, the only Jewish congregation within the city of St. Louis. This community is committed to the practice of radical hospitality, interfaith partnerships, and creating solutions to racism and poverty. Through these efforts, many individuals that have been marginalized have found welcome and belonging within their congregation.

Rabbi Talve is also working to support the wider St. Louis community. She has built collaborative organizations such as the Ashrei Foundation and Missouri Healthcare for All to confront systems of economic disparity and injustice, deepen the social justice work of the faith community, and advocate for issues of access to healthcare, housing, and education.

“Tikkun olam” is a Hebrew phrase that represents the Jewish call to heal and repair our broken world. Not only does Rabbi Talve work to repair what is broken, she invites and supports all of us to do the same.

Honoring The Legacy

“...and a time to every purpose under heaven.”
Ecclesiastes 3:1

On April 10, 2024, had she lived, Sister Mary Antona Ebo, FSM, would have been one hundred years old. On April 13, family and friends gathered at St. Alphonsus Liguori (Rock) Church for a centennial celebration of her life and legacy.

Sister Antona’s favorite scriptural readings and beloved hymns and spirituals buoyed those present as they paid tribute to a life well lived. A narrative, organized as seasons of her life, recounted Sister Antona’s childhood and the hardships her family endured; her young adulthood, including her conversion to Catholicism, her enrollment as a nurse cadet at St. Mary’s Infirmary, and her decision to become a Sister of St. Mary; her courageous stand in Selma in support of voting rights for African Americans, and her many professional accomplishments; and, finally, her role as a member of her religious congregation’s leadership, her continued service as a pastoral associate, and her unflinching racial justice advocacy.



Among those sharing their memories of Sister Antona were Father Joseph Brown, SJ, Rabbi Susan Talve of Central Reform Congregation, and journalist Bonita Cornute. Many in attendance remarked at Sister Antona’s ability to bring together so many people from such diverse backgrounds. And all left hearing echoes of her gentle nudging to “keep looking under the rug,” fight the good fight, and “do what the spirit say do.”

Significant Figures in Racial History

Mary McLeod Bethune – died May 18, 1955, in Daytona Beach, FL. Bethune was an educator, philanthropist, humanitarian, and civil rights activist. She initiated the National Council of Negro Women and led several other African American women's organizations.

Continued on next page.

INTRODUCTORY RITES**Gathering: Alleluia, Sing to Jesus!****HYFRYDOL**

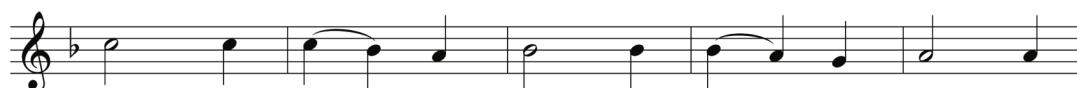
1. Al - le - lu - ia! Sing to Je - sus! His the
 2. Al - le - lu - ia! Not as or - phans Are we
 3. Al - le - lu - ia! Bread of an - gels, Here on the
 4. Al - le - lu - ia! King e - ter - nal, You the



scep - ter, his the throne. Al - le - lu - ia! His the
 left in sor - row now; Al - le - lu - ia! He is
 earth our food, our stay! Al - le - lu - ia! Here the
 Lord of lords we own; Al - le - lu - ia! Born of



tri - umph, His the vic - to - ry a - lone.
 near us; Faith be - lieves, nor ques - tions how.
 sin - ful Flee to you from day to day.
 Mar - y, Earth your foot - stool, heav'n your throne.



Hark! The songs of peace - ful Zi - on Thun - der
 Though the cloud from sight re - ceived him When the
 In - ter - ces - sor, friend of sin - ners, Earth's re -
 You with - in the veil have en - tered, Robed in



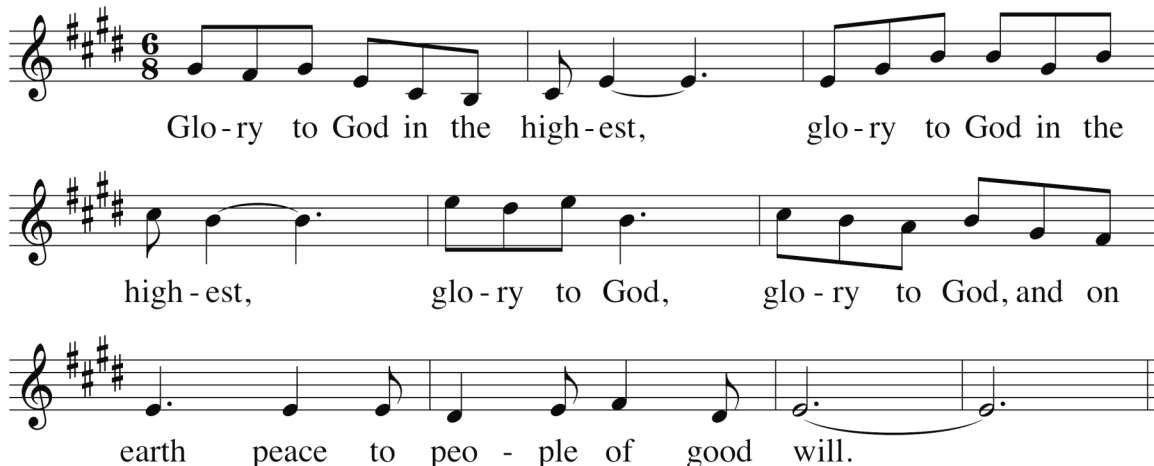
like a might - y flood: "Je - sus out of ev - 'ry
 for - ty days were o'er, Shall our hearts for - get his
 deem - er, plead for me, Where the songs of all the
 flesh, our great high priest; Here on earth both priest and



na - tion Has re - deemed us by his blood."
 prom - ise: "I am with you ev - er - more?"
 sin - less Sweep a - cross the crys - tal sea.
 vic - tim In the eu - cha - ris - tic feast.

*Gloria: The Glendalough Mass**Lawton*

Refrain



Glo-ry to God in the high-est, glo-ry to God in the
high-est, glo-ry to God, glo-ry to God, and on
earth peace to peo - ple of good will.

Verses

1. We praise you,
we bless you,
we adore you,
we glorify you,
we give you thanks for your great glory,
Lord God, heavenly King,
O God, almighty Father.
2. Lord Jesus Christ, Only Begotten Son,
Lord God, Lamb of God, Son of the Father,
you take away the sins of the world,
have mercy on us;
you take away the sins of the world,
receive our prayer;
you are seated at the right hand of the Father,
have mercy on us.
3. For you alone are the Holy One,
you alone are the Lord,
you alone are the Most High,
Jesus Christ,
with the Holy Spirit,
in the glory of God the Father.
Amen.

Text: ICEL, © 2010

Music: *The Glendalough Mass*, Liam Lawton; arr. by Paul A. Tate, © 2010, GIA Publications, Inc.

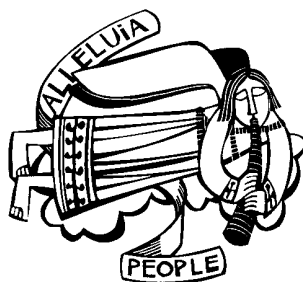
LITURGY OF THE WORD

Responsorial Psalm 47: God Mounts His Throne

Warner

God mounts his throne to shouts of joy; a
blaze of trum-pets for the Lord._____

Copyright © 2006, World Library Publications. All rights reserved.



Gospel Acclamation: Celtic Alleluia

O'Carroll

Al - le - lu - ia, al - le - lu - ia!
Al - le - lu - ia, al - le - lu - ia!

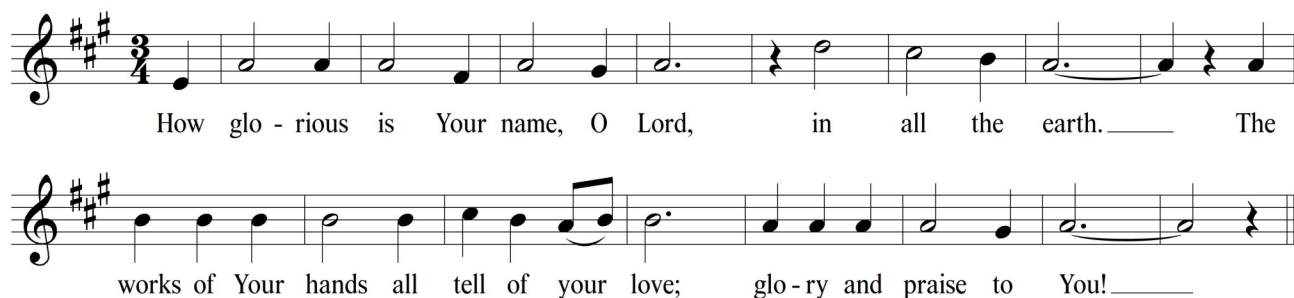
Text: Fintan O'Carroll and Christopher Walker
Music: Fintan O'Carroll and Christopher Walker
© 1985, Fintan O'Carroll and Christopher Walker. Published by OCP.

***Go and teach all nations, says the Lord;
I am with you always, until the end of the world.***

LITURGY OF THE EUCHARIST

Presentation of the Gifts (10:30): How Glorious Your Name

O'Connor, S.J.



How glo - rious is Your name, O Lord, in all the earth. _____ The
works of Your hands all tell of your love; glo - ry and praise to You! _____

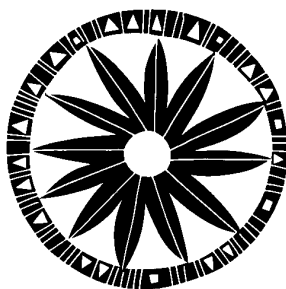


Holy, Holy, Holy: The Glendalough Mass

Lawton

Ho - ly, Ho - ly, Ho - ly Lord, Lord God of
 hosts. Heav - en and earth are full of your glo-ry. Ho -
 san - na, ho - san - na, ho - san - na in the high - est. Ho -
 san - na, ho - san - na, ho - san - na in the
 high - est. Bless - ed is he who comes in the name of the
 Lord. Ho - san - na, ho - san - na, ho -
 san - na in the high - est. Ho - san - na, ho -
 san - na, ho - san - na in the high - est.

Text: ICEL, © 2010

Music: *The Glendalough Mass*, Liam Lawton; arr. by Paul A. Tate, © 2010, GIA Publications, Inc.

*Memorial Acclamation A: The Glendalough Mass**Lawton*


We pro-claim your Death, O Lord, and pro -
fess your Res - ur - rec - tion un - til you come a - gain.

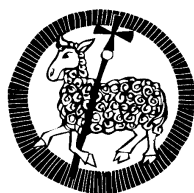
Text: ICEL, © 2010

Music: *The Glendalough Mass*, Liam Lawton; arr. by Paul A. Tate, © 2010, GIA Publications, Inc.*Amen: The Glendalough Mass**Lawton*


A - men, a - men, a - men, a - men.

Music: *The Glendalough Mass*, Liam Lawton; arr. by Paul A. Tate, © 2010, GIA Publications, Inc.*Lamb of God: The Glendalough Mass**Lawton*


Lamb of God, you take a - way the sins of the world, have
mer-cy on us. Lamb of Lamb of God, you take a - way
the sins of the world, grant us peace, grant us peace.

Music: *The Glendalough Mass*, Liam Lawton; arr. by Paul A. Tate, © 2010, GIA Publications, Inc.

COMMUNION RITE*Communion Hymn: In Remembrance of You**Gather 944*

Verses



1. Je - sus, hope for all, teach us to be - lieve.
 2. Je - sus, Son of God, you are liv - ing Word.
 3. Je - sus, Lamb of God, bear - er of our sin,



Reach us, hope for all, in wa - ter, wine, and wheat.
 Teach us, Son of God, to share what we have heard.
 Free us, Lamb of God; come heal us from with - in.

Refrain



Gath-ered at ta-ble, gath-ered in love, food for the jour-ney



sent from a-bove. Strength-en and feed us in all that we do,



gath - ered at ta - ble in re - mem - brance of you.

COMMUNION RITE

Meditation (10:30): A Song of Hope

Foley, S.J.

REFRAIN:

I know the plans I have for you, says the Lord:
Plans of fullness, not of harm;
To give you a future and a hope.

VERSE:

After a time has gone by,
Then I will visit you,
Fulfill my promise to you,
And bring you back.

I know the plans...

VERSE:

Then you will call upon me
And you will pray to me;
And I will listen to you,
And bring you back.

I know the plans...

VERSE:

You will seek me.
And find me.
When you seek me with all of your heart,
I will be found by you, *I know the...*



CONCLUDING RITE***Recessional: Song of St. Patrick******Haugen***

Refrain




May the Spir - it of Christ be our hope through the day, be our
guard through the night, our com - pan - ion on the way.

Verse 1



1. Christ be ev - er be - fore us, Christ be ev - er be -
hind us, Christ be ev - er with - in. D.C.

Verses 2-5



2. Christ up - on our left hand watch - ing, At our right hand
3. Christ be in each ho - ly si - lence, Christ be in our
4. Let us be God's light in the dark - ness, Let us be God's
5. God Cre - a - tor, bless and keep us, Christ, be ev - er
guid - ing, Christ a - bove, be - neath us guard - ing,
speak - ing, Christ in ev - 'ry work we of - fer,
kind - ness; Let us be God's jus - tice and mer - cy,
near us; Spir - it be the light be - fore us, D.C.

Near to us a - bid - ing.
Ev - er in our seek - ing.
Hands and feet of Christ.
Gen - tle be our path - way.

Text: Based on *St. Patrick's Breastplate*; Marty Haugen, b.1950
Tune: Marty Haugen, b.1950
© 1986, GIA Publications, Inc.

**REPRINTED/PODCAST/STREAMED WITH PERMISSION UNDER
ONE LICENSE #A-704947
ALL RIGHT RESERVED.**

Art by Steve Erspamer. All Rights Reserved.

Continued from previous page

Bethune was an advisor to Pres. Franklin D. Roosevelt, with whom she created the Federal Council on Colored Affairs, (or the “Black Cabinet”). She was the only African American woman on the US delegation that created the United Nations charter.

Upcoming Events

May 16 1:00–2:00 pm An in-person discussion of *Judaism’s 10 Best Ideas*, based on the book by Dr. Arthur Green, will be held at the Mirowitz Center, 8 Millstone Campus Dr., 63146. All are welcome and can expect to gain new insights—whether you are just starting to learn or have been studying Judaism for some time. It is not necessary to read the book before the presentation. For more information and to register for this free event, go to: tinyurl.com/3hmjasw3

May 16 1:00–2:00 pm 6:00 –7:30 pm You are invited to participate in a living history experience at the Mary Meachum Freedom Crossing, 25 East Prairie Ave., 63147. This site is recognized as part of the Underground Railroad Network to Freedom. Hear the stories of those involved in the journey for freedom of nine enslaved people. Admission is free and registration is required. For more information and to register, go to: marymeachum.org

June 15 8:00 am Race for Reconciliation The Race For Reconciliation is a 5K run/walk with the goal of promoting racial unity in St. Louis. This year the race will be held on Delmar Blvd to bring the message of racial unity to the historic Delmar Divide in collaboration with the Delmar Loop Juneteenth Celebration. This will be a fun activity for participants of all paces with a 1-mile course option as well. For more information and to register, see their website: <https://runsignup.com/Race/MO/SaintLouis/RaceforReconciliation5K>

June 22 9:00 am – 1:00 pm Save the date for this year’s Maafa procession and prayer service sponsored by the Archdiocese of St. Louis and the Office of Racial Harmony. The event commemorates the millions of lives lost in the Middle Passage and Transatlantic Slave Trade. More details will be available soon.

For information about additional community programs see the calendar of events at Seeds of Justice Network: seedsofjusticenetwork.org/

For more information, or to become part of anti-racism ministries, contact Winnie Sullivan penultim@swbell.net or Lisa Burks Imburks60@gmail.com.

Dine Out with Fellow Parishioners

The Pastoral Care Commission is offering opportunities to dine and enjoy gathering with fellow parishioners. This is for Senior Parishioners and anyone who would like to join us. We have two options for our weekend Masses: Sunday morning, June 2nd after 10:30 Mass at Humphrey’s (3700 Laclede Ave) and Saturday evening, June 15th after 5:15 Mass at Vito’s (3515 Lindell Blvd.).

Humphrey’s will be hosted by Maureen Hoock after the 10:30 Mass. Please RSVP by May 28th, to Tina Saunders at tinas12311@gmail.com, or 314-443-4509. To join the 5:15 Saturday group at Vito’s please RSVP by June 10th to Rosemary Jermann at jermann.rosemary@gmail.com or 314-320-7677.



College Church is Hiring!

Director of Faith Formation

The Director of Faith Formation is a full-time salaried position. The Director of Faith Formation oversees the religious and spiritual formation of children and adults in the parish and supports parish family life informed by our identity and values as a Jesuit parish in the City of St. Louis.

For more information, scan QR code or go to sfxstl.org/job-postings



Youth Faith Formation Registration is Open!

Registration for our 2024-25 Youth Faith Formation programs is open!

We offer 2 programs to families: Catechesis of the Good Shepherd for children ages 3-12 and a traditional classroom program for children in 1st-8th grades. Ignatian spirituality is an important part of both of these programs, and you can learn more and register on our website:

<https://sfxstl.org/yf-registration-confirmation>

Please reach out to Julie (julie@sfxstl.org) or Jennifer (jennifer@sfxstl.org) with any questions. Registration closes on June 1st.



Need Bowl, Plate, and Silverware Donation!

The Social Connections Commission (aka The Parish Party People) is trying to do our part in caring for our creation and being environmentally responsible by doing what we can to decrease the landfill resulting from our events. If you have reusable, lightweight 8" or 5" plates or small bowls or stainless utensils that you are no longer using, we would love to add to our collection. Please email (butmomwhy@gmail.com) or text Maureen (314-420-1650) for more information. Please do not just drop off at the Parish Center. Thanks!

Duffle Bag and Backpack Donations Needed: Donations Accepted Through May 26th

St. Francis Community Services seeks new or gently used duffle bags or sturdy backpacks for clients in or traveling through St. Louis. The bags should be fairly durable and comfortable for travel.

Please drop off donated bags by Sunday, May 26th in one of the following ways:

- After Mass in one of the large bins that will be placed in the vestibule of the church every weekend throughout the month of May
- Monday-Friday from 8:30am-12pm or 1-3pm to the College Church parish center at 3628 Lindell Blvd.

Feel free to reach out to Christine at christine@sfxstl.org with any questions. Thank you so much for your consideration!

Pentecost Approaches—Time for a Potluck!

On Sunday, May 19th after the 10:30am Mass, we will once again come together for a Pentecost Potluck.

As Pentecost celebrates the birthday of the Church, when people of many different languages all heard the Good News, we will celebrate the many cultures present in our community with all different varieties of food!

Please use this link to sign up to volunteer and/or bring food: <https://tinyurl.com/sfxpentecostpotluck>



YEAR TO DAY ANALYSIS	Actual Q3 FY24 as of 3/31/2024	Budget Q3 FY24 as of 3/31/2024
Unrestricted Revenue	692,897.64	580,178.27
Restricted Offerings & Gifts	93,620.90	131,471.00
Program Fees	15,384.00	5,083.00
Investment Income	4,884.63	3,333.30
Grant Revenue	168,325.00	95,856.00
Other Revenues	248,658.26	217,144.00
Merchant Account Fees	(13,299.62)	(13,500.00)
TOTAL INCOME	1,210,470.81	1,019,565.57
Personnel Costs	557,841.95	589,911.16
Supplies	41,108.85	32,174.76
Fees & Services	177,887.47	139,386.73
Occupancy	193,025.89	173,873.48
Tfrs Other Parishes/Diocese	93,089.00	96,335.66
TOTAL EXPENSES	1,062,953.16	1,031,681.79
ORDINARY INCOME	147,517.65	(12,116.23)
Other Income/Expense	32,807.94	0.00
NET INCOME	114,709.71	(12,116.23)

Third Quarter Financial Report

Our financial situation is better than expected as we enter the fourth quarter of our fiscal year. This is due to increased revenue in the following areas:

- Growth in our offertory giving of \$55,0000
- One time gifts of \$45,000
- Gala revenue was \$12,500 higher than expected
- Social Ministry received an extra grant of \$30,000
- Wedding revenue is higher than expected.
- We received \$40,000 from our SLU building fund for renovations in the parish center.

Our expenses are higher than expected:

- Parish Center renovation expenses to date are \$40,000. These expenses are included in Fees & Services and in Occupancy. They are offset by the revenue from our building fund at SLU.

Thank you to our offertory and one-time givers for your generous support of our parish. We have many wonderful ministries at College Church and your continuing support enables us to keep them vibrant!



**SFX Community Parties
Tickets on Sale!**

Check out all the amazing opportunities to meet fellow parishioners and support College Church!

- Does a **Pool Side Cookout** sound good to you?
- Or a **Backyard Barbeque** with Fr. Dan?
- Or a **Mario Cart Tournament**?
- Maybe a **CITY SC Game** at Urban Chestnut?
- How about a **Bourbon Tasting**?
- Or **Murder Mystery Party**?
- Or **Dinner and a Sing-along**?



Use the QR code to purchase tickets or go to <http://bit.ly/sfxpartytix>.

Discipleship and Mission

Discipleship and Mission, a 5-day silent guided retreat led by Father Don Wester, May 20-24, at Mercy Conference and Retreat Center. Each day consists of two conference, celebration of Eucharist, time for optional faith sharing, and time for rest and reflection. Cost: \$330 commuter or \$550 overnight. More information and registration by May 14 at mercycenterstl.org.

Circle of Creation Green Corner

Let's remember our Mother Earth this Mothers' Day and be good to her and all our Mothers and those who have taught us to care for all with whom we share our Home Planet.

One way you can recycle the solar glasses you used for eclipse watching is through Astronomers Without Borders [Solar Glasses Recycling and Distribution](https://astronomerswithoutborders.org/programs/solar-glasses-distribution#collection_node). [astronomerswithoutborders.org/programs/solar-glasses-distribution#collection_node].

A local collection partner is Schillers Camera at 9240 Manchester Rd 63144. You may also turn in solar glasses into a bag held by an usher before or after the Saturday evening or the Sunday morning Masses. There is also a bag for solar glasses in the Adult Faith Room in the Parish Center.

A provocative article regarding Earth Day (Every day is Earth Day), "Celebrate Earth Day by Skipping the 'Green Consumerism' Fads" by Stephanie Feldstein is provided through [Sierra](#), the magazine of the Sierra Club.

But for things you DO need to buy, you may find help concerning which companies to support via your purchases through [Better World Shopper](https://betterworldshopper.org) [betterworldshopper.org].

You can also put your money where your values are. This article from Project Drawdown may help. "[SAVING \[FOR\] THE PLANET](https://drawdown.org/publications/saving-for-the-planet)" [drawdown.org/publications/saving-for-the-planet].

OPEN SPACE STL offers [community stewardship volunteer opportunities](https://volunteer.openspacestl.org) through the metro area. [volunteer.openspacestl.org]

[Revamp the Riverfront](https://interland3.donorperfect.net/weblink/weblink.aspx?name=E347224&id=108) clean-up events are to prevent plastic pollution from entering the Mighty Mississippi and eventually our oceans! [https://interland3.donorperfect.net/weblink/weblink.aspx?name=E347224&id=108]

The next volunteer event is Wednesday, May 29, from 5:30 PM to 7:30 PM at Mural Mile at 601 S Leonor K. Sullivan Blvd 63102.

Public Electronics Recycling events. See the schedule of events at recycling.squarespace.com/electronics-recycling-events

May 18, 8:00 to 11:00 AM
359 Old Meramec Station Road
Manchester, MO 63021 | hosted by City of **Manchester**

Visit the College Church Circle of Creation Committee's Green Corner sfxstl.org/circleofcreation on the Parish website to keep up to date on resources related to caring for creation, including public electronics recycling events.

May 11th-12th

May 4
5:15 pm Fr. McMahon, S.J.

May 5
8:00 am Fr. Redding, S.J.

10:30 am Fr. Redding, S.J.

May 18th-19th

May 18
5:15 pm Fr. Redding, S.J.

May 19
8:00 am Fr. McMahon, S.J.

10:30 am Fr. McMahon, S.J.

This Sunday's Scripture Readings

First Reading:

Acts 1:15-17, 20a, 20c-26

Responsorial Psalm:

Ps 103:1-2, 11-12, 19-20

Second Reading:

1 John 4:11-16

Gospel:

John 17:11b-19

Bulletin Articles

Email bulletin articles to Camille Smith, at bulletin@sfxstl.org, before Thursday at noon 10 days before the bulletin date.

College Church Accessibility

As a reminder, **assistive listening devices** are available for our liturgies. Please let the ushers know if you would like to use one.