

AUTOCREW MANAGEMENT SYSTEM

DESIGNED FOR EFFICIENCY, DEPENDABLE IN DISASTER

OFFSHORE

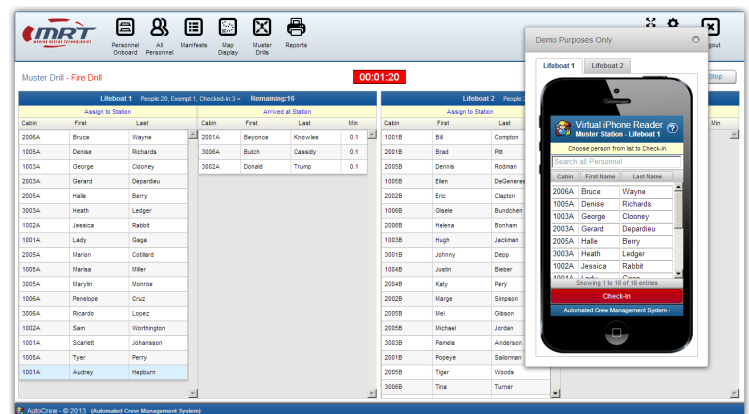
The AutoCrew Management System integrates multiple management stations and non-proprietary readers for real time situational awareness and operational effectiveness. Holistic, flexible, and available for single or multi-site use. AutoCrew is your operational and management solution to effective Personnel on Board and Muster Management.



DESIGN FEATURES:

- Web-Based
- Redundant
- Multi-Lingual
- Non-Proprietary
- Flexible
- User Installed

*AutoCrew is uniquely **web-based**. Reports can be checked from a smart phone or tablet by approved officers, allowing for flexibility of movement during an emergency drill. The web-based system means real time information is directly available to the management and emergency teams across all platforms. Remote support and updates are possible, reducing cost and saving time.*



AUTOCREW COMPONENTS



POB MANAGEMENT- The backbone of the AutoCrew system, the Personnel on Board (POB) tool automates and tracks key personnel data for employees, contractors and guests across single/multiple sites. This tool saves countless hours by eliminating manual tasks and duplication. With customizable fields, multi-lingual interface, and single-click management reports, the choice to automate POB is clear.

AUTOMATIC MUSTER- AutoCrew Muster provides real-time tracking of personnel to all safe gathering points, muster and duty stations. AutoCrew readers can be fixed or wireless, and registration achieved by barcode, RFID, UHF, PIN or biometrics. Reports appear instantly and can be printed to multiple printers or accessed remotely through the Enterprise Management module.

Drill | Exempt: 4 | Counted: 90 | Missing: 104 | 47%  Total | 198

TRAVEL LOGISTICS- From the approval of industry-specific boarding requirements to integrated rotation and shift scheduling, AutoCrew fully automates the registration and tracking of your personnel. The logistics of international, multiple mode transport is simplified and automated to save operational time and costs.

BUNK MANAGEMENT - AutoCrew Bunk Management pairs with Travel Logistics and POB to provide incoming personnel with designated bunk, automated duty station, and life-boat allocations. This feature also provides automated reports for Housekeeping, Emergency and Administration teams to manage outgoing personnel requirements.

AREA CONTROL- Often used for restricted areas, confined spaces and control areas with limited capacity, Area Control is commonly referred to as Gangway or Bridge Management using traffic lights and access control features. Area Control can also be applied to multiple areas and multiple sites.

ACCESS CONTROL- AutoCrew manages the entry or exit of a specific area by access control methods including RFID, passcode, photo-identification and/or fingerprint readers. Limit access with real-time reporting and historical records.

REPORTS- Unlimited, custom reports to meet your requirements in real-time. Reports include: POB, Time & Attendance, Fatigue Management, Promotion Tracking, Drill Results Analysis, Incoming Flight Manifests and Certificate Tracking, etc.

Certificate Tracking- Automatically monitors time-sensitive certificate expiration, Hiring/Promotion forecasting, and generates response team automatically and in real-time.

Marine Rescue Technologies Inc.
1623 US Highway 1, Suite A1
Sebastian FL, 32958
P: +1 (772) 388 1326
E: acms@marinerescuetechnologies.com
www.mrt-autocrew.com

