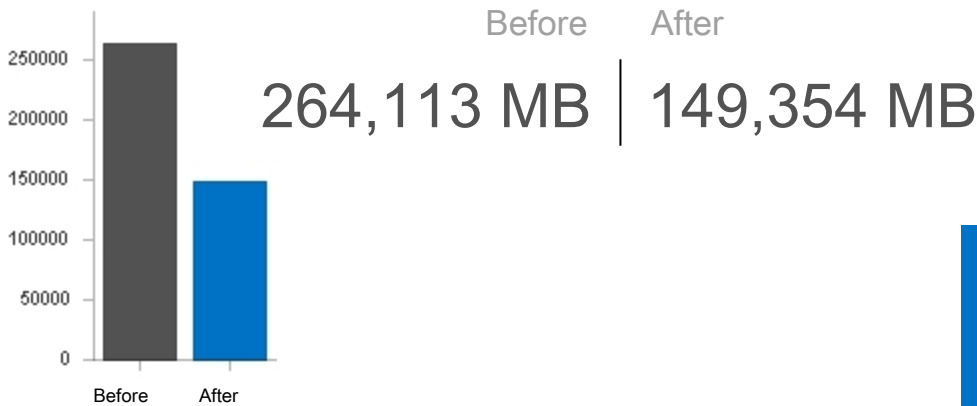


Scan Report

NXPowerLite for Microsoft Exchange v1.0.0

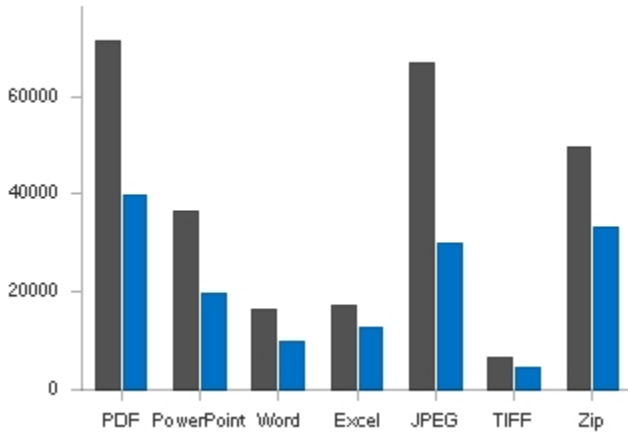
No. of Runs: 3
 Report Generated: 04 Sep 2014 14:18
 Running Time: 2h 55m 45s
 Total Mailboxes: 95
 Status: Complete

Results



Storage reclaimed
114,759 MB
 43 % reduction

Supported Attachments



File Type	Before Size	After Size	Files
PDF	71,133 MB	39,681 MB	2,412
PowerPoint	36,475 MB	19,731 MB	1,358
Word	16,375 MB	9,675 MB	602
Excel	17,200 MB	12,600 MB	1,245
JPEG	66,891 MB	30,067 MB	1,845
TIFF	6,353 MB	4,466 MB	58
Zip	49,686 MB	33,133 MB	1,987
Total	264,113 MB	149,353 MB	9,507

Your Data

Data Type	Volume
Supported Files	264,113 MB
Unsupported Files	22,391 MB
Total	286,504 MB



Supported: 92 %
 Unsupported: 8 %

Mailbox Summary

Mailbox status	Count
Completed successfully	95
Total	95

Email Summary

Reason	Size	Items
Successfully processed	2,027 MB	903
Unread	904 MB	99
Not old enough	1,051 MB	42
Already optimized	10 MB	3
Not an email or no supported attachments	22 MB	3
Total	4,014 MB	1,050

Skipped Attachments

The information is not available when scanning.

Unsupported Attachments

File Extension	Size	Files
AI	9,875 MB	605
MP3	6,875 MB	258
RTF	1,278 MB	1,987
PSD	1,245 MB	1,520
BMP	987 MB	2,598
DWG	851 MB	547
CSV	583 MB	2,045
GIF	489 MB	997
PUB	156 MB	102
TXT	52 MB	1,258
Total	22,391 MB	11,917

Configuration Details

Connection

EWS URL: <http://exchangeEWS.neuxpower.com>

User: NXPowerLite Admin