

Connecticut Siting Council
Public Comment Hearing Session
Docket No. 470

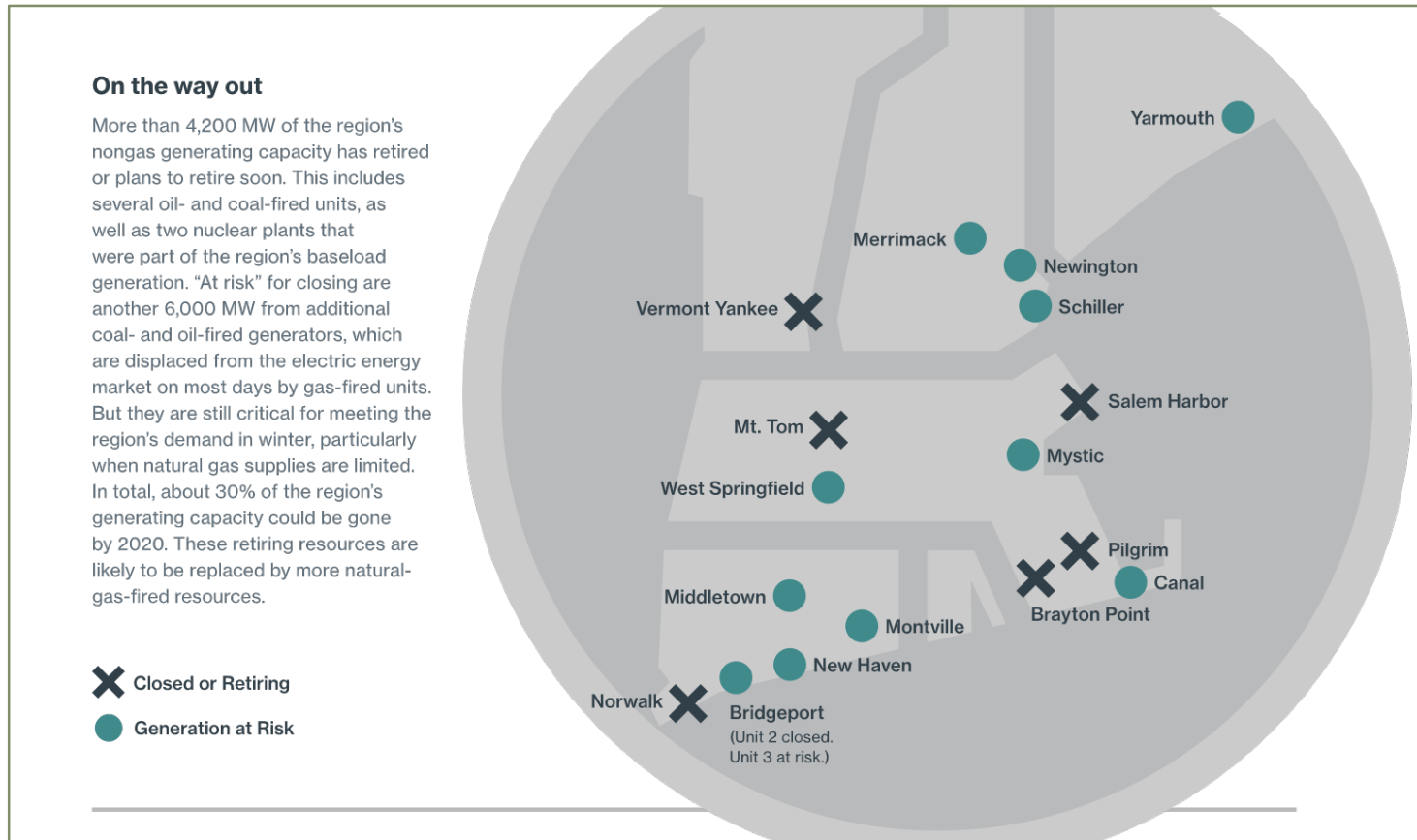
October 20, 2016



NTE ENERGY

KEC | Regional Electric Generation Needs

- 4,200 MW of region's non-gas generating capacity has retired or will retire soon
- "At risk" for closing are another 6,000 MW from additional coal and oil generators, including approximately 401 MW of coal and 1,772 MW of oil generators in Connecticut



KEC | Project Overview

Type of Facility:

- State-of-the-art 550-MW 1 x 1 combined-cycle, electric generating facility
- 150-foot exhaust stack
- “Baseload” power source (capable of continuous, steady operation)
- Operational flexibility to respond to changing demand
- Incorporates advanced air cooling technology to reduce water demand by 95%
- Equipment designed and installed to minimize vibration

Electrical Interconnection and Fuel Supply:

- Adjacent 345-kV circuit
- Natural gas via nearby lateral connection through existing right-of-way; limited ULSD backup fuel

KEC | Project Rendering



KEC | Location

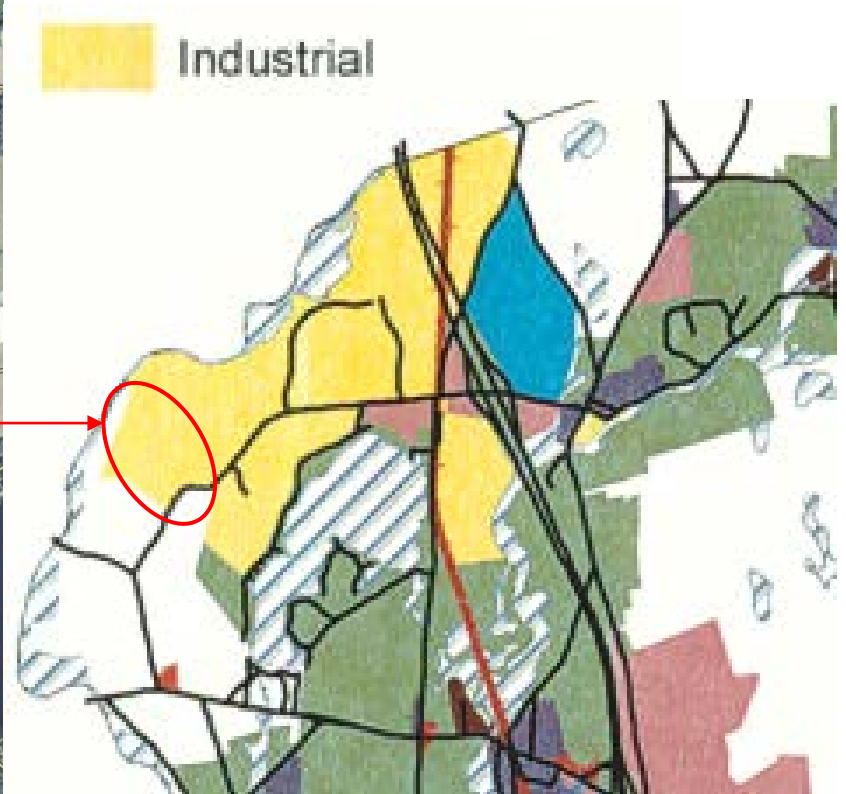
Site Location

73 acre site at 180/189 Lake Rd.

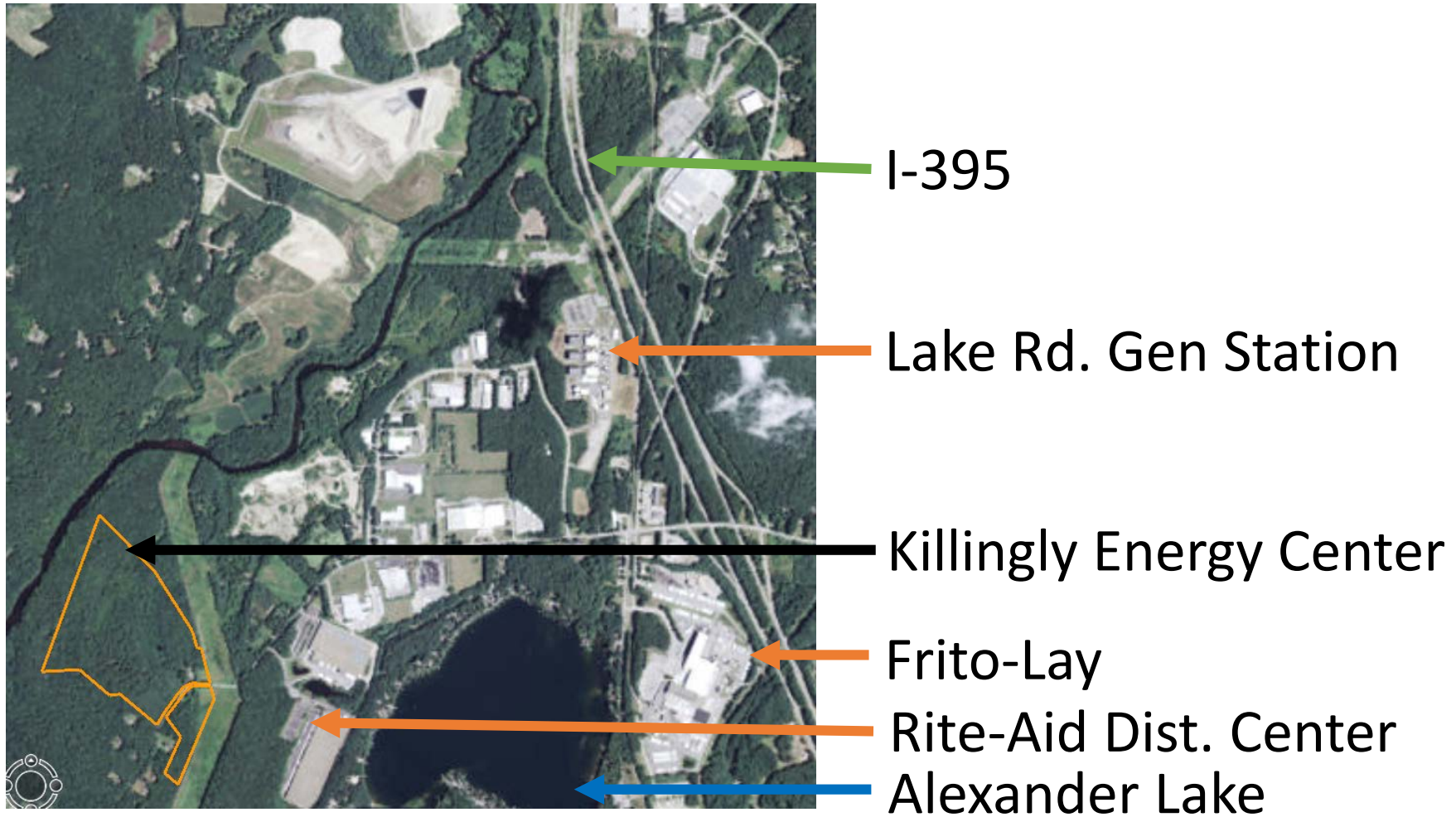


Future Land Use

Town of Killingly, Plan of Conservation and Development: 2010 - 2020



KEC | Location – Killingly Industrial Park



KEC | Direct Benefits

- 250-350 direct construction jobs
- 25-30 direct operations jobs
- One of the largest tax payers in Killingly
- Large wastewater utility customer
- Community Environmental Benefits Agreement
- Other Town infrastructure improvements

Preliminary Project Schedule

Spring/Summer 2016

- Interconnection Request
- Air Permit Application
- Siting Council Application

Winter/Spring 2017

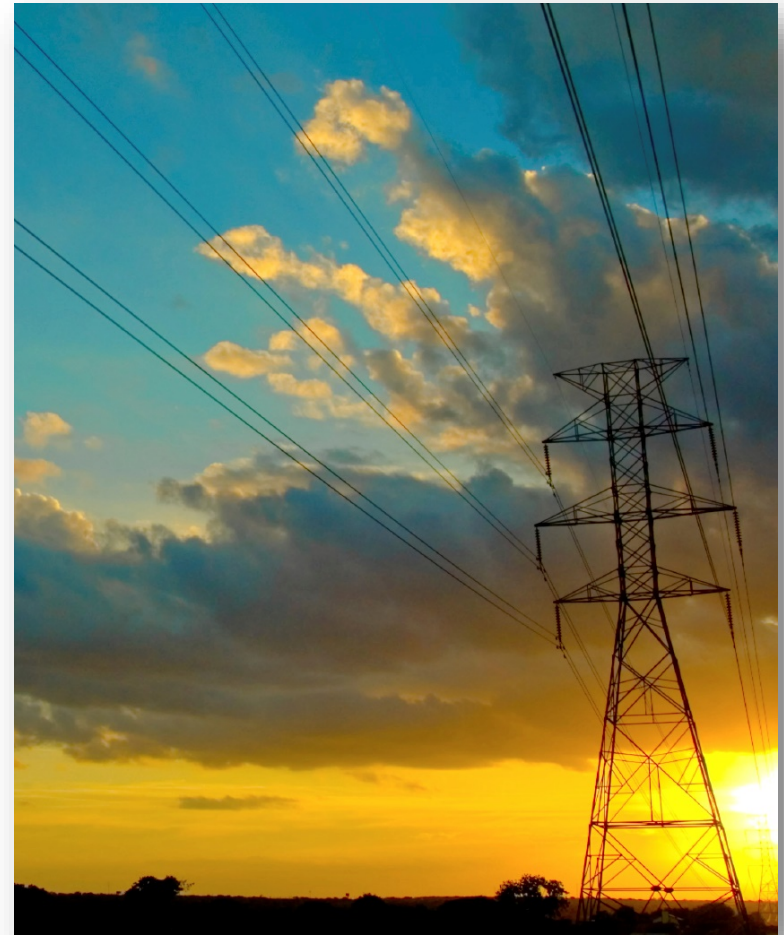
- Anticipated Permits
and Approval

Summer 2017

- Start of Construction

Summer 2020

- Commercial Operation



www.killinglyenergycenter.com

