

**Colville Indian Reservation**  
**Non-Member Sport Fishing Regulations**



**APRIL 1, 2022 THROUGH MARCH 31, 2024**

Purchase Licenses at: [HTTPS://COLVILLE.NAGFA.NET/ONLINE/](https://colville.nagfa.net/online/)

## Contents

PART I—INSTRUCTIONS ON HOW TO USE THIS BOOKLET .....	3
PART II—PERMIT PROVISIONS.....	4
PART III—PERMIT FEES AND EXCEPTIONS .....	5
PART IV—GENERAL RULES.....	6
PART V—SPECIAL RULES .....	11
PART VI—DEFINITIONS.....	14
PART VII—OTHER INFORMATION RELATED TO FISHING.....	16
PART VIII -MAPS AND FIGURES .....	17
Protect our waters from Invasive Species! .....	23

The Confederated Tribes of the Colville Reservation (CCT or Colville Tribes) welcomes you to the Colville Indian Reservation (Reservation). The Reservation encompasses over 1.4 million acres within Ferry and Okanogan counties in northeastern Washington State. The aquatic resources within the Reservation exist in a wide variety of climates, geographies, and habitats. Effective management of these diverse fisheries requires special regulations. Accordingly, pursuant to Colville Business Council Resolution No. 2022-198 and Colville Confederated Tribes Colville Tribal Law & Order Code sections 4-1-140 and 4-1-142, the Colville Business Council has adopted the non-member fishing regulations below, which establish licensing rules, permit fees, limits, and other restrictions. These regulations are intended for the 2022-2024 fishing seasons and remain in effect until new regulations are approved by the Colville Business Council.

The primary goal of these fishing regulations is to provide a successful subsistence fishery for CCT members, while providing a high-quality, productive recreational fishery for CCT members and non-members. Fishery management through sound fish population and habitat controls along with conservation regulations will ensure a high-quality sustainable fishery resource for future generations. The Fish and Wildlife Program manages the Reservation waters to provide both hatchery and wild fish angling opportunities for its members and the general public. In 2021, the CCT Resident Fish Hatchery Program stocked over 219,000 trout (152,440 pounds) into Reservation lakes, streams, and boundary waters. The Colville Tribes Resident Fish Hatchery’s Annual Stocking Plan can be found at <https://www.cct-fnw.com/trout-hatchery-1>. Native fish populations are carefully managed to ensure long term persistence and harvest.

## PART I—INSTRUCTIONS ON HOW TO USE THIS BOOKLET

This booklet is designed to inform non-members of the applicable fishing regulations on the Reservation. Please review the following instructions on how to use this booklet and how to determine the applicable CCT fishing regulations that you must follow while fishing within the Reservation boundaries. Additionally, check for addendums or corrections to the regulations in this booklet by calling the CCT Fish and Wildlife Department or visiting the website [www.cct-fnw.com](http://www.cct-fnw.com).

<b>STEP 1</b>	Review the permitting provisions in <b>Part II</b> of this booklet.
<b>STEP 2</b>	Review the permitting fees and exceptions to fees described in <b>Part III</b> of this booklet.
<b>STEP 3</b>	Review the non-member fishing general rules in <b>Part IV</b> of this booklet. General rules designate the non-member fishing seasons; establish limits and length restrictions for non-member fishing; and provide general requirements and prohibitions relating to non-member fishing on Reservation and boundary waters.
<b>STEP 4</b>	Review the special rules in <b>Part V</b> of this booklet. Special rules establish fishing seasons, limits, and requirements that may be different from the general rules.
<b>STEP 5</b>	Familiarize yourself with the definitions provided in <b>Part VI</b> and other fishing information in <b>Part VII</b> to ensure you are fishing in a manner authorized by CCT.
<b>STEP 6</b>	Obtain your permit online. <a href="https://colville.nagfa.net/online/">HTTPS://COLVILLE.NAGFA.NET/ONLINE/</a> and go fishing!

**Any questions not answered in this booklet should be directed to:**

Fish and Wildlife Department  
Colville Confederated Tribes  
P.O. Box 150  
Nespelem, WA 99155  
Phone: (509) 634-2110  
Office hours: Monday – Thursday 7:00 a.m. to 5:30 p.m.

**For emergencies or to report suspicious activity call:**

Colville Natural Resources Enforcement and, or  
Colville Tribal Police at (509) 634-2472 or (800) 551-5800 or 911

You may be subject to state licensing requirements in addition to the requirements contained below. Contact the Washington Department of Fish and Wildlife at (509) 892-1001, (509) 754-4624, or (360) 902-2200 for more information on state requirements.

## PART II—PERMIT PROVISIONS

- a. All non-members fishing on the Interior Waters of the Reservation that are open to non-member fishing **MUST** have a valid Colville Indian Reservation fishing permit in their immediate possession.
  - Annual permits are valid from April 1 through March 31 or from the date of purchase to March 31.
  - Digital copies of your permit are acceptable.
- b. All non-members fishing from the Reservation shoreline on Crawfish Lake, Lake Pateros (Wells Pool), Washburn Pond, Rufus Woods Lake (except at a designated fishing area(s) Figure 3), Columbia River above Grand Coulee Dam, or the Okanogan River **MUST** have in their possession a valid Colville Indian Reservation fishing permit.
- c. All non-members fishing by boat on Reservation Boundary Waters **MUST** have in their possession either a valid Colville Indian Reservation fishing permit or a valid fishing license issued by the state of Washington.
- d. All non-members fishing within the Reservation **MUST** retain proof of compliance with fish species identification, length, number, and wild or hatchery origin restrictions until the angler is ashore and has finished fishing for the day. If the fish caught are in the process of being prepared for immediate consumption, proof of compliance is not required.
- e. All non-members who purchase a second rod stamp can use two fishing poles. General limits per angler still apply. The second rod stamp is not a substitute for a fishing permit.

### PART III—PERMIT FEES AND EXCEPTIONIONS

- a. **Permit Fees.** The fees listed in Table 1 shall be charged for Colville Indian Reservation fishing permits. Permit fees do not include any additional vendor fees that may be applied.
1. **Note: AN ANNUAL USE PASS IS REQUIRED FOR ALL VEHICLES RECREATING ON THE RESERVATION and CAN BE PURCHASED THROUGH THE ONLINE SALES SITE (<HTTPS://COLVILLE.NAGFA.NET/ONLINE/>) WITH YOUR FISHING PERMITS.**

**Table 1.** Non-member Colville Indian Reservation Fishing Permit Fees (All sales are final)

Type of Permit	Fee	Senior Fee**
One Day Fishing Permit*	\$10.00	\$5.00
Three Day Fishing Permit*	\$20.00	\$10.00
Seven Day Fishing Permit*	\$30.00	\$15.00
Annual Fishing Permit	\$40.00	\$20.00
Non-member spouse of member (Annual)**	\$20.00	\$10.00
CCT Descendant (Annual)**	\$20.00	\$10.00
Annual Second Rod Stamp	\$12.00	\$6.00
One Day Second Rod Stamp	\$2.00	\$2.00
Three Day Second Rod Stamp	\$4.00	\$4.00
Seven Day Second Rod Stamp	\$6.00	\$6.00
Boat Launch Fee per day/Annual	\$10.00/ \$80.00	-
Day Reservation Use Pass	\$20.00	
Annual Reservation Use Pass	\$80.00	-

\* The permit period for one, three, and seven day periods will be designated on the permit and does not have to start on the day of purchase. Permits are valid for consecutive days only.

\*\* Reduced or Exceptions to Fishing Permit Fees are described in the section below. See Part VI describing eligibility for senior permit fee discounts.

- b. **Reduced Fishing Permit Fees.** If you are a descendant of a CCT member, non-member spouse of a CCT member, or a non-member that is a bona fide resident (see definition in part VI) 65 years or older, you are eligible to purchase a reduced fishing permit.
1. Descendants and non-member residents 65 years and older can only obtain reduced fishing permits at the Colville Tribes Headquarters Fish & Wildlife office located at 21 Colville St., Nespelem, WA., (509) 634-2110.
  2. A non-member spouse of a CCT member can obtain a reduced fishing permit at the Colville Tribes Headquarters Fish & Wildlife Office, Rainbow Beach Resort or Log Cabin Resort on the Twin lakes, and at CCT Fish & Wildlife offices in Inchelium or Omak.
- c. **Exceptions to Permit Fees.** Exceptions to Fishing Permit Fees only apply to the following non-members.
1. Anglers **under sixteen (16)** years of age are not required to have a Colville Indian Reservation fishing permit when accompanied by anyone holding a valid Colville Indian Reservation fishing permit.

2. Disabled American veterans over 65 years of age and individuals who are blind may receive a free Colville Indian Reservation fishing permit and Reservation Use Pass. These must be obtained at the Fish and Wildlife Headquarters office located at 21 Colville St., Nespelem, Wa., (509) 634-2110.

#### **PART IV—GENERAL RULES**

- a. **Non-Member General Fishing Season.** Except as expressly provided for in these regulations, non-members may fish within the Reservation only during the general season, April 1 – October 31, unless the special rules provide otherwise.
- b. **Open Waters.** Only waters within the Reservation listed as open in the special rules (**Part V**) are open to fishing by non-members pursuant to a Colville Indian Reservation fishing permit.
- c. **General Limits.** Table 2 establishes the general daily limits and length restrictions for non-member fishing on open waters. Refer to the special rules in **Part V** of this booklet for exceptions and modifications to these general limits.

**Table 2. General Limits**

Species	Daily Limit	Length Restriction	Possession Limit
Rainbow Trout Brown Trout Brook Trout Cutthroat Trout	5, combined total of all trout species	Minimum 8 inches	2 daily limits
Kokanee (landlocked Sockeye)	5	Minimum 8 inches	2 daily limits
Burbot	5	None	2 daily limits
Salmon	Closed to fishing		
Steelhead	Closed to fishing		
Bull Trout	Closed to fishing		
Largemouth Bass	5	Less than 12 inches or greater than 17 inches; only 1 fish over seventeen 17 inches may be retained	2 daily limits
Smallmouth Bass	No Limit	None	None
Walleye	No Limit	None	None
Lake Whitefish	15	None	2 daily limits
Mountain Whitefish	Closed to fishing		
Crayfish (Native) See Figure 5	Closed to fishing		
Crayfish (Nonnative) See Figure 5	No limit.	None	No limit
White Sturgeon	Closed to fishing		
Lamprey	Closed to fishing		
Northern Pike	No limit, must be dead before returning to the water or harvested.	None	
Other game fish species (see definition) including: Crappie (Black or White), Yellow Perch, Channel Catfish, Bluegill, and Pumpkinseed	No limit	None	No limit
Non-game fish including: Common Carp, Golden Shiner, Northern Pikeminnow and Tench.	No limit	None	No limit
Fish species not listed above	Closed to fishing		

- d. **General Requirements and Prohibitions.** Unless otherwise expressly stated in these regulations, the following general requirements and prohibitions apply to all non-member fishing:
1. **Authorized Gear:** Anglers are only authorized to use rod and reel, bait, and/or artificial lures while fishing.
  2. **Bait Fishing:** While fishing with bait, all trout of minimum length landed must be included in the daily limit.
  3. **Boating Operations:** It is unlawful to operate a boat within one hundred (100) feet of a diver's marker, swimmer, or shoreline fisherman.
  4. **Check Stations:** It is unlawful and constitutes obstruction to fail to stop at Colville Fish and Wildlife Department check stations and produce fish and/or tribal permits in your possession.
  5. **Chumming:** It is unlawful to place any fish, parts of fish, or other substances including artificial lights into any waters on the Reservation for the purpose of attracting fish to a particular area in order that they may be taken.
  6. **Cleaning Fish:** It is unlawful to discard fish entrails into any waters within boundaries of the Reservation where prohibited by signs.
  7. **Commercial Fishing:** It is unlawful for anyone to commercially harvest fish, amphibians, reptiles, or any other aquatic species without the permission of the Colville Fish and Wildlife Department.
  8. **Creel and Fish Data Collection Compliance:** It is unlawful for any angler to refuse to cooperate with creel and fish data collection upon the request by Colville Fish and Wildlife Department personnel. This includes relinquishing any part of a tagged fish. It is also unlawful for any person to obstruct the duties of a creel census taker.
  9. **Defacement:** It is unlawful to destroy, tear down, shoot at, deface, or erase any printed materials, signs, buoys, or creel census stations placed or posted to assist in the enforcement of Tribal fishing regulations.
  10. **Boat Launch Sites:** It is unlawful to launch or recover a boat using a boat trailer in an area that is not a designated boat launch.
  11. **Designated Boat Launch Sites:** It is unlawful to access a Boundary Water from the Reservation using a boat that requires a boat trailer unless the boat is launched or recovered from the following designated boat launch sites (Table 3).



**Table 3.** Designated Boat Launch Sites

Boundary Water	Designated Boat Launch Sites
Columbia River above Grand Coulee Dam	<ul style="list-style-type: none"> <li>• Inchelium/Bissel Flats</li> <li>• Wilmont Bay</li> <li>• Mouth of the Sanpoil River at the Alternate Ferry Landing</li> <li>• Sanpoil River Boat Launch</li> <li>• Sanpoil Arm at Keller Park</li> </ul>
Columbia River from Chief Joseph Dam to Grand Coulee Dam (Rufus Woods Lake; Figure 3)	<ul style="list-style-type: none"> <li>• Seaton’s Grove</li> <li>• Bridgeport State Park</li> <li>• Timm Brothers Ranch</li> <li>• Net Pen RV Park</li> </ul>
Wells Reservoir	<ul style="list-style-type: none"> <li>• Washburn Pond</li> </ul>

12. **Disturbance:** It is unlawful to board, destroy, move, shoot at, deface, or tie a boat to any net pen, buoy or platform marked by “CCT FW” or fish habitat structure placed for the enhancement and protection of fish.
  
13. **Fish Adjacent to Facility:** It is unlawful to fish within 400 feet downstream from a dam (except North Twin Lake Dam), fish ladder, or trap. It is also unlawful to fish inside of a rearing or holding container.
  
14. **Firearms:** Firearms are not permitted in any areas open to non-member fishing, except to the extent specifically permitted under Tribal law authorizing the exercise of hunting privileges.
  
15. **Fire Hazard Areas:** No one legally entering a designated Fire Hazard Area is permitted to use the area for recreational purposes. Open fires are permitted in designated campground areas only.
  
16. **Giving Game Fish to Other Persons:** It is unlawful to possess game fish caught by another person unless, attached to the game fish, is a written statement describing the game fish at issue, the name and address of the person who caught the game fish, the number of the license authorizing the fishing activity, and the date on which the game fish was caught.
  
17. **Irrigation Diversion:** It is unlawful to fish in an irrigation canal or ditch downstream from point of diversion to any fish protection device if the area is posted as “Closed Waters.”
  
18. **Littering:** It is unlawful for any person to throw, drop, or leave any discarded objects, garbage, debris, or waste within the boundaries of the Reservation except into garbage receptacles or containers installed for waste collection.
  
19. **Live Fish as Bait:** It is unlawful for any person to possess or use live fish as bait while fishing within the boundaries of the Reservation.
  
20. **Live Fish Transport:** It is unlawful for any person to transport live fish, crustaceans (crayfish) or aquatic plants within the boundaries of the Reservation without required permits.

**21. Maximum Number of Fishing Lines and Hooks:**

- A. *Maximum number of lines*- Anglers are limited to the use of one rod/line under their immediate control. A second rod/line under the immediate control of the angler may be used only if the angler is in possession of a valid second rod stamp affixed to a valid Colville Indian Reservation fishing permit.
- B. *Maximum number of hooks*- A hook may be a single point, double point, or treble hook. Any fishing line may be attached thereto any number of flashers or blades, but not more than *three hooks* separate or in combination with flies or artificial lures.

22. **Means of Taking Crayfish:** It is unlawful to take crayfish by any means other than by angling, hand, hand dip net, shellfish pot, or ring net. Use of the above methods shall be limited to not more than two gear types, separately or in combination. It is unlawful to leave any shellfish pot or ring net unattended without the owner's name and address on the marking buoy. Baited pots and ring nets are allowed, although no live organisms may be used as bait.

23. **Planting or Transporting Organisms:** It is unlawful to plant or transport any fish, aquatic plant, or any organism to or from any waters within the boundaries of the Reservation without the authorization of the Fish and Wildlife Director.

- 1) The CCT Fish and Wildlife Department Director shall, as needed, offer rewards for the information leading to the apprehension and conviction of a person or persons involved in unlawful planting or transportation of fish and other aquatic organisms. Notices of violations and the reward amounts will be posted when applicable.

24. **Possession:** No person shall have in his possession or under his control any unprocessed fish or crustacean during the closed season or in excess of the limit, or without the required permit or tag.

25. **Shipping of Fish:** Fish shipped via private or common carrier require a label on the package with the following information: contents, name, address, permit number of taker, and the date taken.

26. **Trespass:** It is unlawful to:

- A. Enter upon fee title property of another without permission of the owner or a person licensed by the owner to provide permission if the property is posted "no trespassing," is fenced, or contains obvious outward signs of habitation;
- B. Enter tribal lands that are not specifically posted as open to the public;
- C. Refuse to depart from or re-enter the Reservation in violation of an order of exclusion issued by the Colville Tribal Court pursuant to the Code; or

D. Take any other action identified as trespassing under these regulations, the Code or other regulations adopted by the Colville Business Council.

27. **Unlawful fishing methods:** It is unlawful for anyone to snag, spear (including spear gun or a bow), gill net, set-line, trap, or shoot any game fish within the boundaries of the Reservation.

28. **Wastage:** It is unlawful and prohibited for any person to permit any fish, reptile, amphibian or shellfish to go to waste needlessly after killing or taking possession of the same.

## PART V—SPECIAL RULES

The special rules listed in the table below provide limited exceptions and modifications to the general rules established in **Part IV** of this booklet with respect to certain fishing activities within specific Reservation waters. **Reservation waters not listed in the Table 4 are closed to non-member fishing.**

**Table 4. Special Rules**

Reservation Waters	Special Rules
Apex Lake	<ul style="list-style-type: none"> <li>• <b>General season and limits apply.</b></li> </ul>
Bourgeau Lake	<ul style="list-style-type: none"> <li>• <b>Season:</b> Open year-round.</li> <li>• <b>General limits apply.</b></li> </ul>
Buffalo Lake	<ul style="list-style-type: none"> <li>• <b>Season:</b> Open year-round.</li> <li>• <b>Largemouth Bass:</b> No daily limit less than 12". No more than 2 over 17 inches.</li> <li>• <b>Walleye:</b> Closed to fishing. Incidental captures must be killed and reported to Fish and Wildlife or Natural Resource Enforcement.</li> <li>• <b>Crayfish:</b> Open July 1 – September 15.</li> </ul>
Columbia River above Grand Coulee Dam (excluding the inundated and free-flowing reaches of the Sanpoil River – see separate special rules)	<ul style="list-style-type: none"> <li>• <b>Season:</b> Open year-round.</li> <li>• <b>Walleye:</b> Daily limit 16. No size restriction.</li> <li>• <b>Smallmouth Bass:</b> Daily limit 10. No length restriction.</li> <li>• <b>Rainbow Trout:</b> No min length. Daily limit 5. Only adipose fin-clipped trout may be retained.</li> <li>• <b>Kokanee:</b> No min length. Daily limit 2.</li> <li>• <b>White Sturgeon:</b> Fishing for White Sturgeon is prohibited.</li> <li>• <b>Salmon:</b> Included as part of the trout daily limit and must be less than 24 inches.</li> </ul>
Columbia River from Chief Joseph Dam to Grand Coulee Dam (Rufus Woods Lake; see Figure 3 for designated fishing area and boat launch locations)	<ul style="list-style-type: none"> <li>• <b>Season:</b> Open year-round (the area between SR155 Bridge and Grand Coulee Dam). Shore anglers may access the shore between the SR155 bridge and Grand Coulee Dam on the tribal side during daylight hours (Figure 6).</li> <li>• <b>Rainbow Trout and Kokanee:</b> Daily limit 2 combined. Only Rainbow Trout missing adipose fin may be retained. No length restriction. Only uninjured trout caught using artificial lures or flies with single-point barbless hooks may be released.</li> <li>• <b>White Sturgeon:</b> Fishing for White Sturgeon is prohibited.</li> <li>• <b>Chinook Salmon:</b> Included as part of the trout daily limit and must be less than 24 inches.</li> </ul>
Cook Lake	<ul style="list-style-type: none"> <li>• <b>Season:</b> Open year-round.</li> <li>• <b>General limits apply.</b></li> </ul>

Reservation Waters	Special Rules
Crawfish Lake	<ul style="list-style-type: none"> <li>• <b>Season:</b> Open last Saturday in April through October 31.</li> <li>• <b>General limits apply.</b></li> <li>• <b>The use of internal combustion engines is prohibited.</b></li> </ul>
Duley Lake	<ul style="list-style-type: none"> <li>• <b>Season:</b> Open year-round.</li> <li>• <b>General limits apply.</b></li> </ul>
Gold Creek (from Gold Lake to confluence with West Fork Sanpoil)	<ul style="list-style-type: none"> <li>• <b>Closed (Tribal Members Only).</b></li> </ul>
LaFleur Lake	<ul style="list-style-type: none"> <li>• <b>Season:</b> Open year-round.</li> <li>• <b>General limits apply.</b></li> </ul>
Lake Roosevelt	<ul style="list-style-type: none"> <li>• See entry for “Columbia River above Grand Coulee Dam.”</li> </ul>
Little Goose Lake	<ul style="list-style-type: none"> <li>• <b>Season:</b> Open year-round.</li> <li>• <b>General limits apply.</b></li> </ul>
Lost Creek	<ul style="list-style-type: none"> <li>• <b>General season and limits apply.</b></li> </ul>
McGinnis Lake	<ul style="list-style-type: none"> <li>• <b>Season:</b> Open year-round.</li> <li>• <b>General limits apply.</b></li> </ul>
Nicholas Lake	<ul style="list-style-type: none"> <li>• <b>Season:</b> Open year-round.</li> <li>• <b>General limits apply.</b></li> </ul>
Okanogan River	<ul style="list-style-type: none"> <li>• <b>Season:</b> The area from the mouth of the Okanogan River to the Highway 173 Bridge at Malott is open year-round for all game fish except trout, salmon, and steelhead. The area upstream of the Highway 173 Bridge at Malott is open from the Saturday before Memorial Day through September 15 for all game fish except trout, steelhead, and salmon. Bass (Largemouth and Smallmouth), Walleye, and Channel Catfish: No limit or length restriction.</li> </ul>
Omak Lake	<ul style="list-style-type: none"> <li>• <b>Season:</b> Open year-round. Fishing is only permitted from dawn to dark.</li> <li>• <b>Lahontan Cutthroat Trout:</b> Daily limit 3. Only 1 over 18 inches.</li> <li>• <b>Gear restrictions:</b> Only artificial lures and flies with barbless hooks are allowed (no bait fishing).</li> <li>• <b>Special restrictions April 1 – May 31:</b> Catch-and-release only. Mission Bay (the north embayment, Figure 4) is closed and is a no wake zone.</li> <li>• <b>Access restrictions:</b> Tribal member only access between the lines located in Figure 4 (Tribal Code 4-1-5-d-4). The south end of Omak Lake is open for boating and fishing to non-members who access the open-water by boat. <ul style="list-style-type: none"> <li>• <i>Resolution 2019-16 has decommissioned the boat launch at Mission Bay. Launching of motor and non-motorcraft is prohibited. Fishing is permitted along the shoreline or via boat launched at other designated boat launches (Special restrictions still apply).</i></li> </ul> </li> <li>• <b>Creel census information:</b> Anglers are required to furnish creel census information. If a creel clerk is not present, the information should be left in the creel boxes located at Cowpie Beach, Nicholson (Beer Can) Beach, and Mission Bay (Figure 4). This is vital to our management efforts.</li> </ul>
Rebecca Lake	<ul style="list-style-type: none"> <li>• <b>Season:</b> Open year-round.</li> <li>• <b>General limits apply.</b></li> <li>• <b>The use of internal combustion engines is prohibited.</b></li> </ul>
Rufus Woods Lake	<ul style="list-style-type: none"> <li>• See entry for “Columbia River from Chief Joseph Dam to Grand Coulee Dam.”</li> </ul>

Reservation Waters	Special Rules
Sanpoil River (inundated reach; Figure 1)	<ul style="list-style-type: none"> <li>• <b>Season:</b> Open year-round.</li> <li>• <b>Bass (Largemouth and Smallmouth):</b> No limit or length restriction. <u>Boundary:</u> Open from regulatory boundary A (Sanpoil mouth) upstream to boundary C (free-flowing river meets lake; Figure 1).</li> <li>• <b>Walleye:</b> No limit or length restriction. <u>Boundary:</u> Open from regulatory boundary A (Sanpoil mouth) upstream to boundary C (free-flowing river meets lake).</li> <li>• <b>Rainbow Trout:</b> Closed February 1 – May 30. Daily limit of five (5) adipose absent (clipped) trout with no length restriction. Catch-and-release only for adipose present (unclipped) trout. <u>Boundary:</u> Open from regulatory boundary A (Sanpoil mouth) upstream to regulatory boundary B (near outlet of Manila Creek and across to outlet of Dick Creek). Boundary B to C closed to trout fishing.</li> <li>• <b>Kokanee:</b> Closed February 1 – May 30. Daily limit two (2) with no length restriction. <u>Boundary:</u> Open from regulatory boundary A (Sanpoil mouth) upstream to regulatory boundary B (near outlet of Manila Creek to outlet of Dick Creek). Boundary B to C closed to kokanee fishing.</li> <li>• <b>White Sturgeon:</b> Fishing for White Sturgeon is prohibited.</li> </ul>
Sanpoil River (Boundary C to North Reservation Boundary, and all unlisted tributaries; Figure 1)	<ul style="list-style-type: none"> <li>• <b>Closed to fishing.</b></li> </ul>
Stranger Creek	<ul style="list-style-type: none"> <li>• <b>General season and limits apply upstream of the Inchelium/Gifford Ferry Road.</b></li> <li>• <b>Area closure: Closed to fishing downstream of the Inchelium/Gifford Ferry Road.</b></li> </ul>
Summit Lake	<ul style="list-style-type: none"> <li>• <b>Season:</b> Open year-round.</li> <li>• <b>General limits apply.</b></li> </ul>
Twin Lakes (North Twin Lake and South Twin Lake)	<ul style="list-style-type: none"> <li>• <b>Season:</b> Open April 9, 2022 – March 12, 2023 and April 8, 2023 – March 10, 2024.</li> <li>• <b>Largemouth Bass:</b> No daily limit, must be less than 12 inches or over 17 inches, no more than 2 over 17 inches.</li> <li>• <b>Smallmouth Bass:</b> No daily limit. Mandatory catch and kill.</li> <li>• <b>Trout:</b> Daily limit 5, no more than 1 over 20 inches.</li> </ul>
Washburn Island Pond	<ul style="list-style-type: none"> <li>• <b>Season:</b> Open April 1 – September 30.</li> <li>• <b>General limits apply.</b></li> <li>• <b>The use of internal combustion engines is prohibited.</b></li> </ul>
Wells Reservoir (Columbia River below Chief Joseph Dam and above Wells Dam)	<ul style="list-style-type: none"> <li>• <b>Season:</b> Open year-round, see exception for trout.</li> <li>• <b>Rainbow Trout:</b> Open July 1 – August 15. Daily limit 10. Minimum length 12 inches. Barbless hooks required. All Rainbow Trout with intact adipose fins must be released.</li> <li>• <b>Bass (Largemouth and Smallmouth), Channel Catfish, and Walleye:</b> No limit or length restriction.</li> <li>• <b>Area closures:</b> The portion of Wells Reservoir from the Okanogan County shore between the base of the dam and Hwy 17 Bridge is closed to all fishing, and the portion of Wells Reservoir downstream of Chief Joseph Dam from the boundary marker to the Corps of Engineers safety zone marker is closed to fishing from a floating device.</li> <li>• <b>White Sturgeon:</b> Fishing for White Sturgeon is prohibited.</li> <li>• <b>Northern Pike:</b> No limit (must be killed before returning to the water). Please report all Northern Pike captures to CCT F&amp;W at (509)634-2110.</li> </ul>

Reservation Waters	Special Rules
Wilmont Creek	<ul style="list-style-type: none"> <li>• <b>Area closure:</b> Closed to fishing downstream of Silver Creek Road.</li> <li>• <b>General season and limits apply upstream of Silver Creek Road.</b></li> </ul>

## PART VI—DEFINITIONS

- a. **“Artificial lure”** means a man-made lure or fly designated to attract fish.
- b. **“Bait”** means anything that attracts fish by scent and/or flavor. This includes any device made of feathers, hair, fiber, wood, metal, glass, cork, leather, rubber, or plastic, which uses scent and/or flavor to attract fish.
- c. **“Bona fide resident”** means a person who has maintained permanent residency within the boundaries of the Colville Indian Reservation for at least 6 months prior to applying for a fishing permit and has established by acceptable evidence intent to continue residing within the Reservation boundaries. Acceptable evidence shall include a Washington State driver’s license or other government issued identification with current address and birth date.
- d. **“Boundary Waters”** means (a) the Columbia River where it forms the southern and eastern boundary of the Reservation, (b) the Okanogan River where it forms the western boundary of the Reservation, (c) the Wells Dam Reservoir, (d) Washburn Island Pond, and (e) Crawfish Lake. The term “Boundary Waters” does not include the free-flowing or inundated portions of the Sanpoil River.
- e. **“Business Council”** means the elected governing body of the Confederated Tribes of the Colville Reservation as prescribed in Article II of the Colville Constitution.
- f. **“Catch-and-release”** means a method of fishing where fish are caught and immediately released back into the water.
- g. **“Code”** means Chapter 4-1 of the Colville Tribal Law and Order Code.
- h. **“CCT Descendant”** means an individual of Colville heritage who is not an enrolled member of the Colville Tribes but whose natural birth mother or natural father is an enrolled member of the Colville Tribes.
- i. **“Daily limit”** means the maximum number of fish that may be taken, caught, killed, or possessed by any person in one day.
- j. **“Designated campground”** means an authorized overnight camping area that is equipped with an improved fire pit or cook stove and toilet facility.
- k. **“Designated fishing area”** means one of the authorized locations on the Colville Reservation shore of Rufus Woods Lake where improved fishing access and facilities are planned under the Memorandum of Agreement between the state of Washington and CCT. Designated fishing

areas are identified by postings upstream and downstream of the site and are for the use of both CCT members and non-members. Currently, there is only one designated fishing area at the Net Pen Campground (Figure 3).

- l. **“Fly”** means a lure on which thread, feathers, hackle or yarn cover at least half of the hook.
- m. **“Game fish”** means Rainbow Trout, Brook Trout, Westslope Cutthroat Trout, Lahontan Cutthroat Trout, Brown Trout, Bull Trout, Whitefish (Mountain and Lake), Kokanee, White Sturgeon, Largemouth Bass, Smallmouth Bass, Yellow Perch, Walleye, Bluegill, Pumpkinseed, Crappie (Black and White), Burbot, Bullhead (Black, Brown, and Yellow), and any other fish designated as a game fish by the Business Council.
- n. **“Interior Waters of the Reservation”** means all rivers, lakes, ponds, streams, sloughs, canals, irrigation canals, and diversions naturally occurring or human made that are located wholly within the boundary of the Reservation, including the Sanpoil River (inundated reach).
- o. **“Length”** means the fish’s length as measured from the fish’s snout to the tip of the tail when relaxed (not compressed vertically [dorso-ventally]; total length). Crayfish length is measured from the tip of rostrum (nose) to tip of tail.
- p. **“Member”** means any person who is enrolled in the Confederated Tribes of the Colville Reservation.
- q. **“Open season”** means the period of time specified by Business Council regulation or the Code when it is lawful to fish.
- r. **“Open waters”** means Reservation surface waters where it is lawful to fish as specified by Business Council regulation or the Code.
- s. **“Possession limit”** means the maximum amount of dead fish allowed to be retained at any one time and includes preserved or processed fish.
- t. **“Regulation”** means any rule, regulation, resolution or ordinance promulgated by the Business Council pursuant to the Code.
- u. **“Reservation”** means the Colville Indian Reservation.
- v. **“Reservation shoreline”** means the line between waters of the Reservation and adjacent land within the Reservation. A reservation shoreline may change during the fishing season as a result of reservoir operations, natural runoff, irrigation demands, etc. The Grand Coulee Dam structure is not considered a Reservation shoreline.
- w. **“Sanpoil River (inundated reach)”** means the portion of the Sanpoil River between the designated Tribal Fishing Boundary and the Sanpoil River (free-flowing reach). The Tribal Fishing Boundary is designated by buoys and depicted as Boundary A in Figure 1 in Part IX of this pamphlet.

- x. **“Sanpoil River (free-flowing reach)”** means the free-flowing reach of the Sanpoil River, which is the portion of the Sanpoil River north of Boundary C as depicted in Figure 1 in Part IX of this pamphlet.

## **PART VII—OTHER INFORMATION RELATED TO FISHING**

- a. **Access.** Some fishing is done on private lands. The continuing permission to fish on private lands depends upon the angler’s friendly relationship with the landowner. Landowners are not required to allow access. It is the responsibility of the angler to obtain access permission from the landowner prior to fishing on such lands. Fisherman should be reminded not to litter and to close all gates they open while fishing on private lands.
- b. **Tagged Fish.** In order to gather information necessary for fisheries management, the Colville Fish and Wildlife Department conducts tagging and marking studies in waters throughout the Reservation. Fish are marked by clipping the adipose, ventral or pectoral fins, or with a colored Floy tag. All marks are non-toxic and will not affect the quality of the fish. Anglers catching tagged fish should return tags and information (species, length, weight, clips, location, date of capture, tag color/number) to:

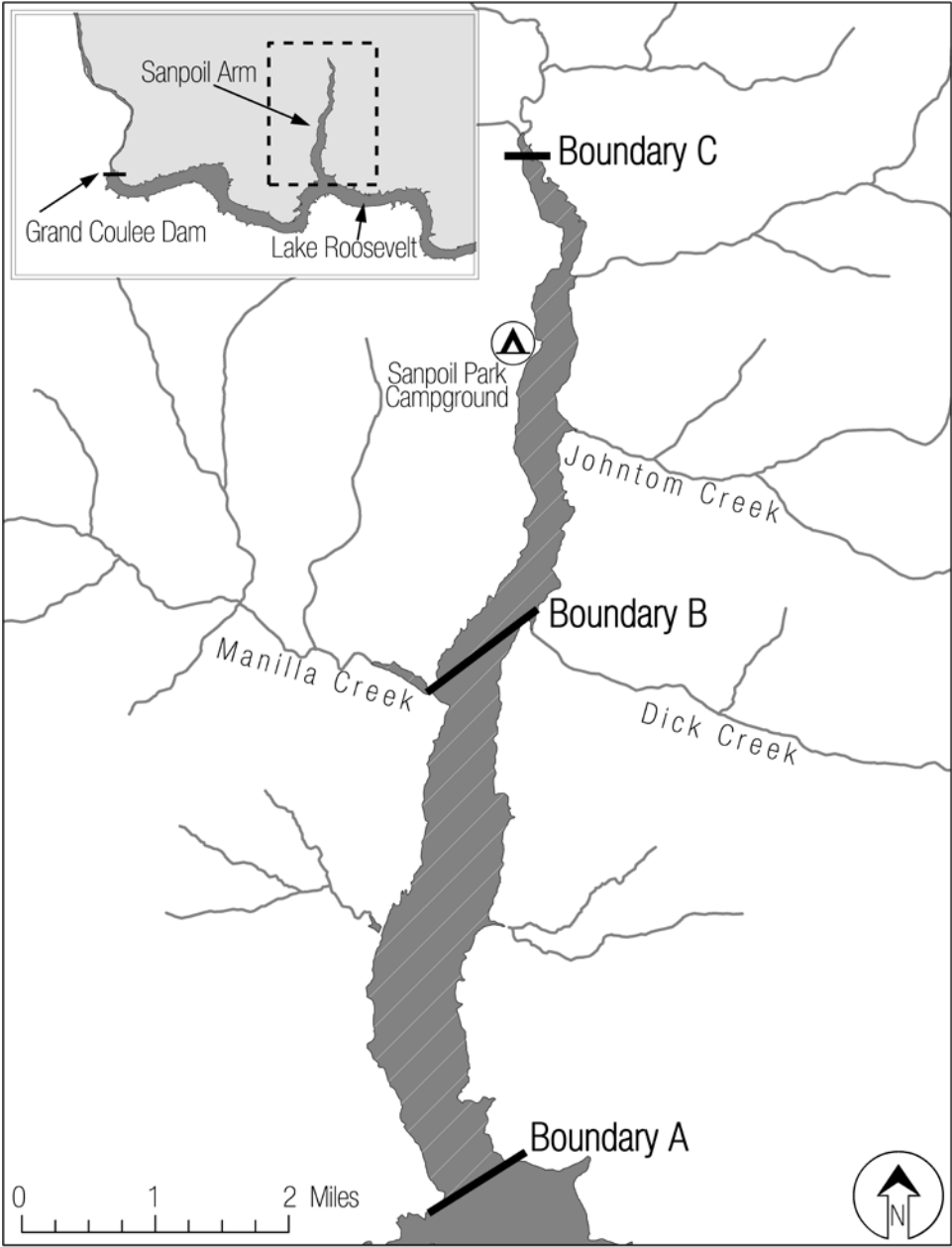
Fish and Wildlife Department  
Colville Confederated Tribes  
P.O. Box 150  
Nespelem, WA 99155  
Telephone: (509) 634-2110

- c. **Eurasian Milfoil/Zebra Mussels (Figure 7):** In order to reduce the spread of Eurasian Milfoil, Zebra Mussels, and other nuisance aquatic plants, anglers using boats are asked to inspect and remove all plants and animals from their boat, motor, and trailer and discard them into the trash before launching and removing their boats from Reservation Waters. Anglers are also requested to contact the Colville Fish and Wildlife Department at (509) 634-2110 if they observe Eurasian Milfoil, New Zealand Mud Snail, or Zebra Mussels.
- d. **Additional Permits:** In addition to the fishing permits described in Part III of this booklet, permits are required for campground and campfire uses. Contact the following departments for more information:

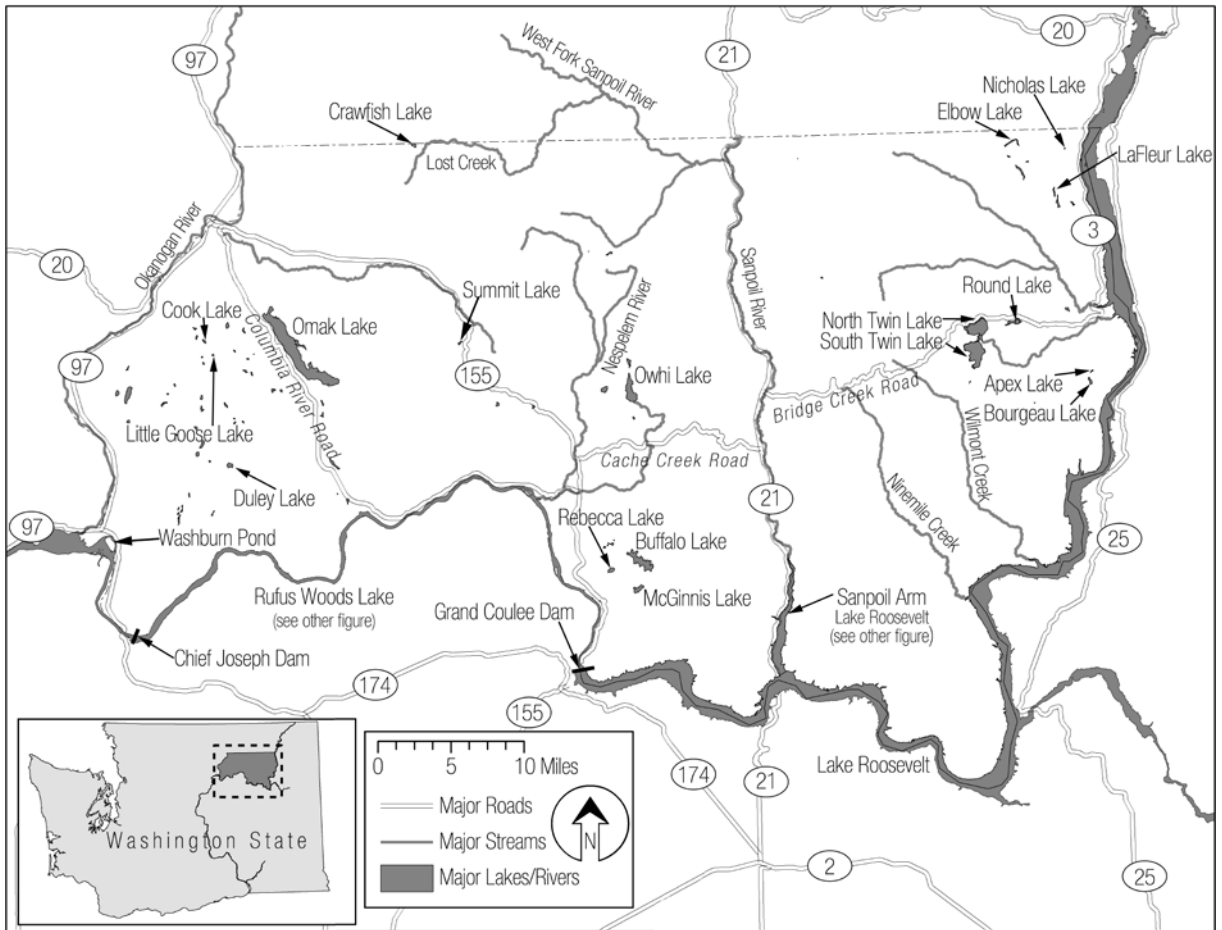
Colville Tribal Parks Department: (509) 634-3145  
BIA Fire Management: (509) 634-2194



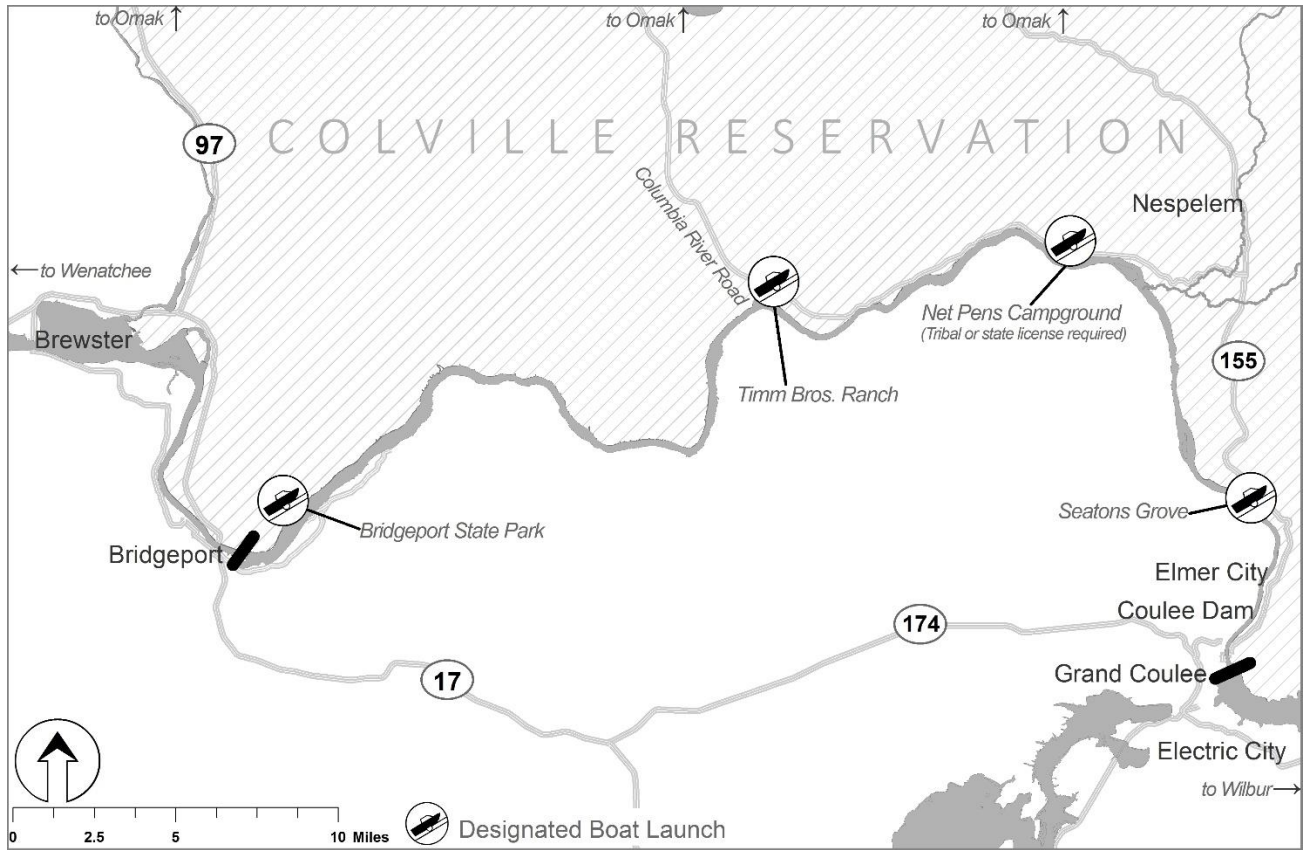
**PART VIII-MAPS AND FIGURES**



**Figure 1. Map of the Sanpoil River (inundated reach) depicting boundaries. Boundary A – The set of buoys at the mouth of the Sanpoil River (inundated reach); Boundary B - The outlet of Manila Creek; Boundary C – The Reservoir/Sanpoil River interface (as defined by the Colville Tribe)**



**Figure 2. Map lakes, rivers and creeks on the Colville Indian Reservation. Not all of these water bodies are open to non-member fishing. Please refer to the general and special rules sections of this pamphlet to determine open waters.**



**Figure 3. Map illustrating Reservation side boat launches and the designating fishing area (Net Pen Campground) on Rufus Woods Lake.**

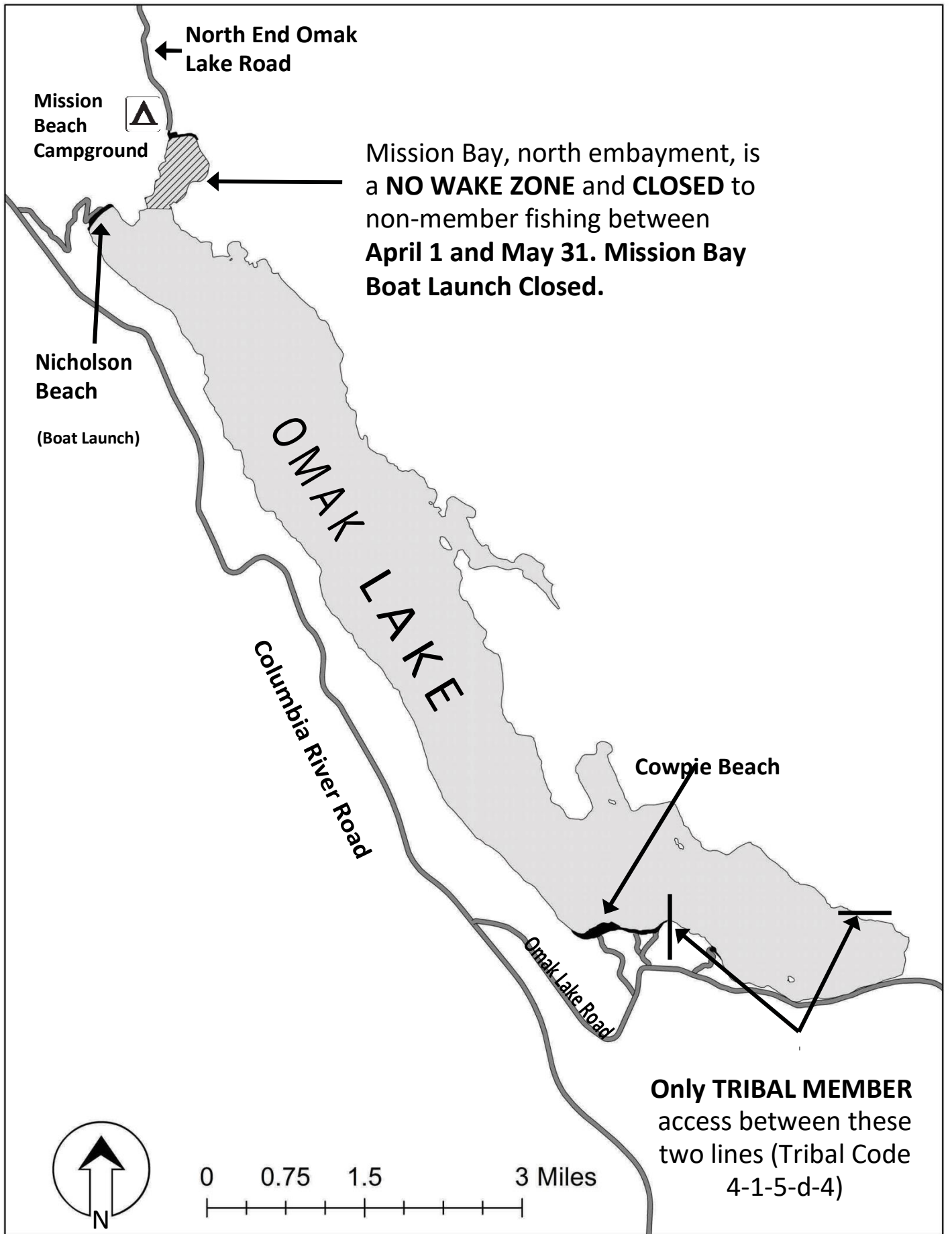


Figure 4. Omak Lake map identifying boundaries and locations pertinent to fishing regulations. From April 1 to May 31, Mission Bay, identified by cross hatched area, is closed to non-member fishing and is a no wake zone.

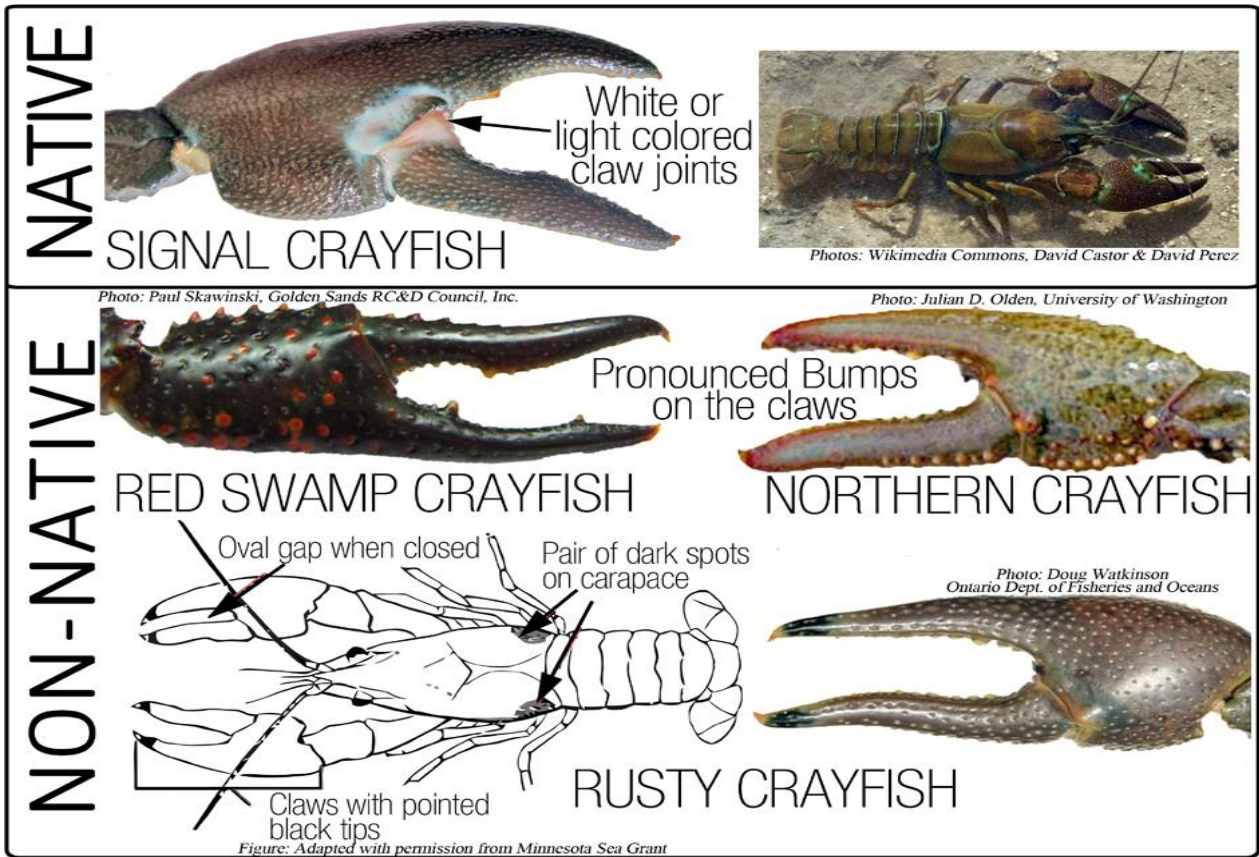


Figure 5. Description of native and nonnative crayfish.

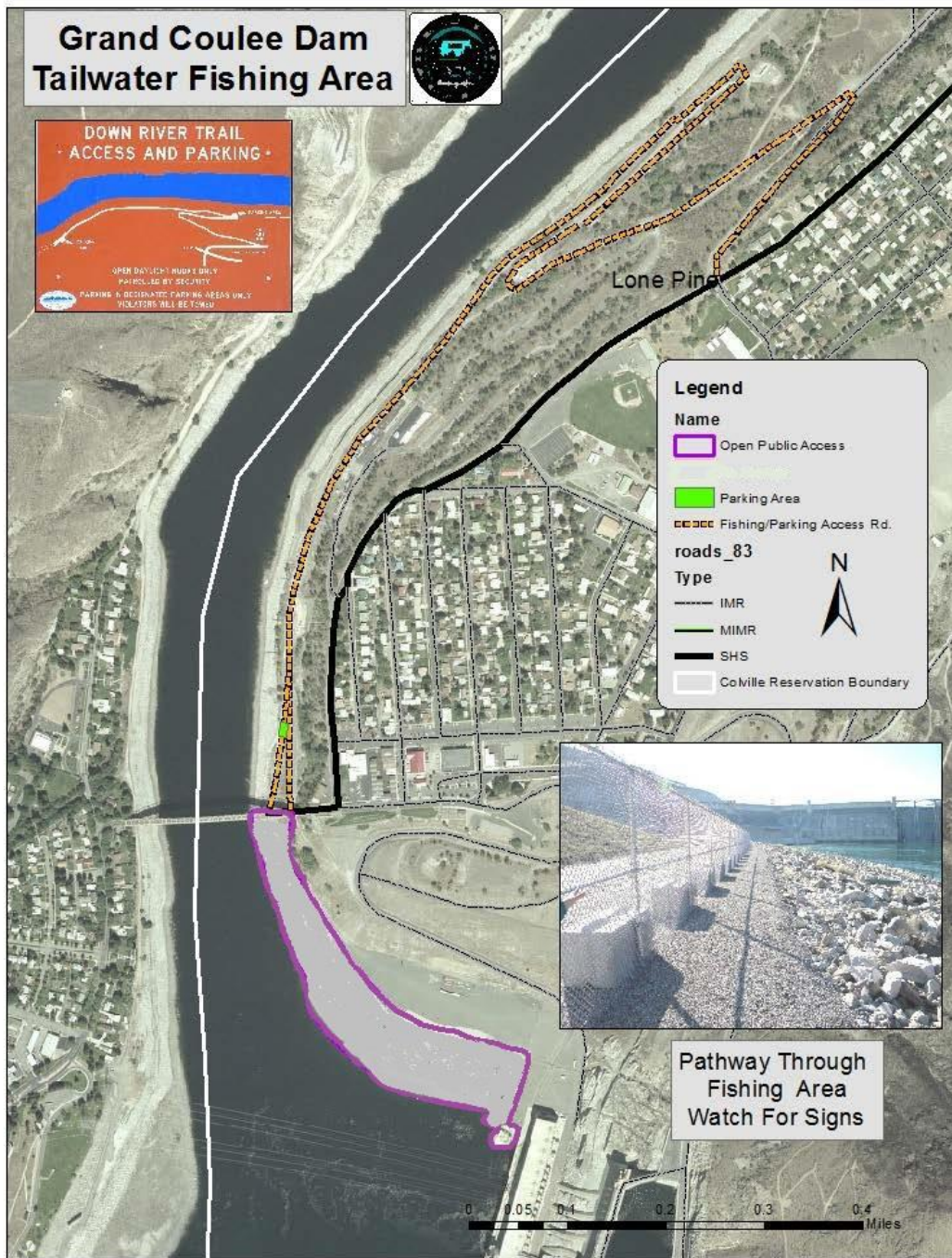


Figure 6. Grand Coulee Dam tailrace shore fishing location between SR155 and Grand Coulee Dam.

# Protect our waters from Invasive Species!

## Before entering & when leaving waterbodies:

**CLEAN:** All equipment should be cleaned of aquatic plants, algae and mud. This includes boat hulls and engines, trailers, shoes, waders, life vests, and other gear.

**DRAIN:** Motor, bilge, livewell and other water containing devices before leaving water access.

**DRY:** Everything for at least 5 days or wipe with a towel before use.

**Do NOT Transport Live Fish:** It is ILLEGAL to transport or release any live fish into reservation waters. Retained fish must be killed before leaving each waterbody.

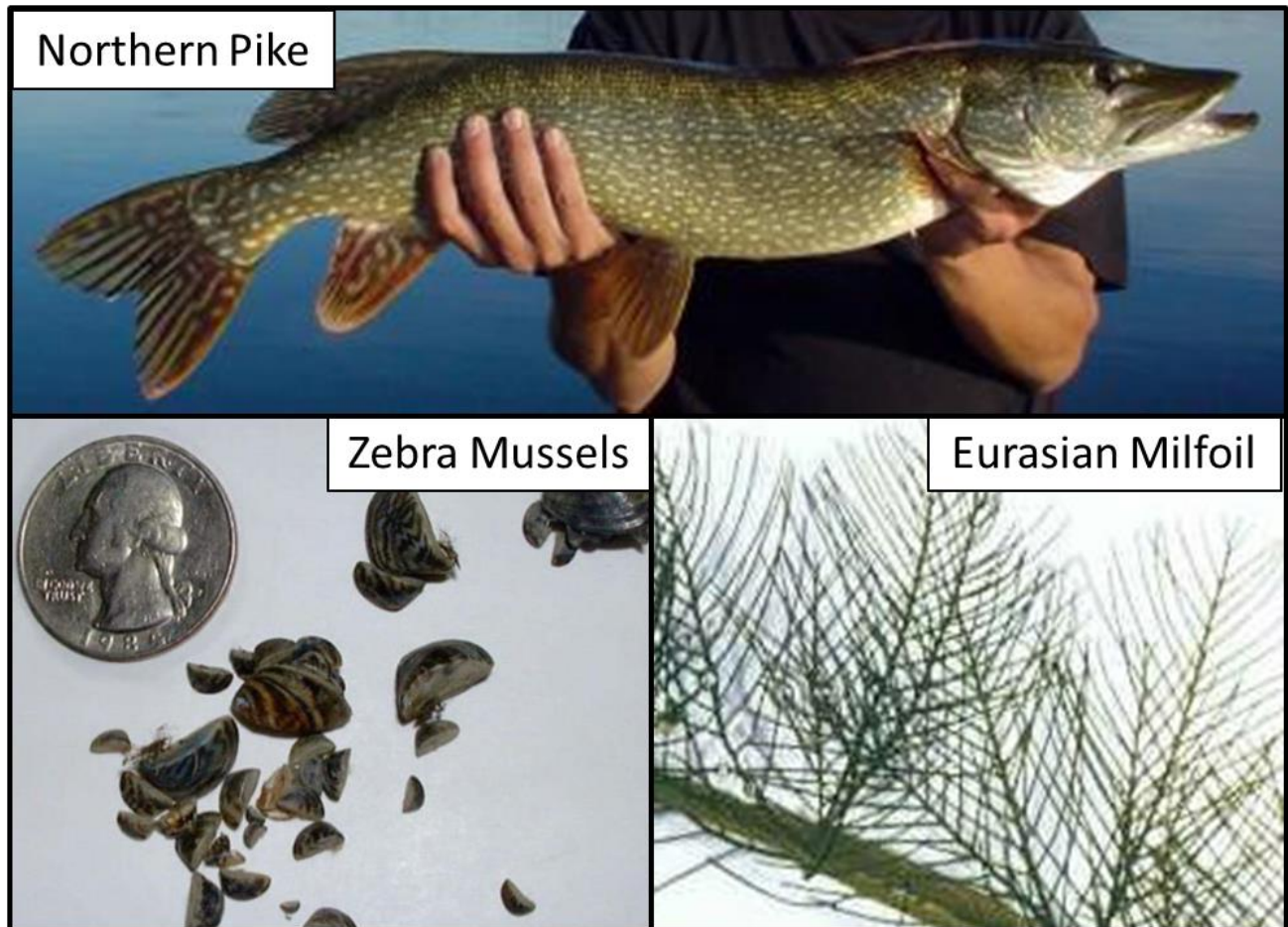


Figure 7. Invasive species threatening CCT Reservation waters. Northern Pike (top), Zebra Mussels (bottom left), and Eurasian Milfoil (bottom right). Note Eurasian milfoil has 12-21 leaflets per leaf and is limp when held out of water and native Northern Milfoil has 5-10 leaflets and is rigid out of water.

The Fish and Wildlife Office of the Confederated Tribes of the Colville Reservation provides geographic data and any associated metadata “as is” without warrantee of any kind including but not limited to its completeness, fitness for a particular use, or accuracy of its content, positional or otherwise. It is the sole responsibility of the user to determine the usability of the data for their purposes. The Tribes assumes no obligation whatsoever for the development, use, or maintenance of any applications applied to or associated with the data or metadata by any entity or person.