

FAIRBANKS®

OMNICELL® 9102 FB SERIES WEIGHING ASSEMBLY



Fairbanks' Omnicell 9102 FB Series is a compact, single-ended shear beam weighing assembly designed for superior performance in the medium weight range (commercial and non-commercial) not requiring extreme hostile protection.

APPLICATIONS

- Legal for Trade
- Inherently Safe
- Batching
- Blending
- Tanks
- Conveyor / In-Motion
- Bins
- Mixing
- Vessels
- Hoppers

FEATURES

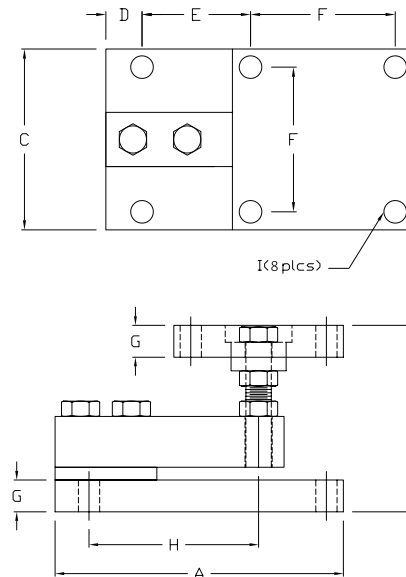
- Low profile design.
- Medium weight range Omnicells — 1,000 to 10,000 lb capacity models.
- Integral height adjustment of receiver plate for easy load balancing.
- Articulating mounting plate accommodates non-planar misalignments of up to 4 degrees.
- Stainless steel load cell and mounting assembly.
- High signal output, well-suited to high deadload situations.
- Mounting plate allows for thermal expansion/contraction.

DIMENSIONS (in inches)

Capacity	A	B	C	D	E	F	G	H	I
1,000 lbs to 5,000 lbs	7.12	4.0 - 4.5	5.00	0.56	2.00	4.00	0.70	4.00	0.63
10,000 lbs	8.50	5.0 - 5.5	5.00	0.75	3.00	4.00	1.02	5.00	0.63

PERFORMANCE SPECIFICATIONS

Capacities	1000 to 10,000 lbs.
Mount Construction	Stainless steel
Load cell:	
Full Scale Output (FS)	3.0mV/v ± 0.25%
Combined Error	≤ 0.03% FS
Non-Linearity	≤ 0.03% FS
Hysteresis	≤ 0.02% FS
Creep Error (20 min.)	≤ 0.03% FS
Compensated Temperature	14° F to 104° F (-10° C to 40° C)
Excitation Voltage	5-15 VDC
Overload	Safe = 150%, Ultimate = 300%
Sideload	Safe = 100%
Rejection ratio	500:1
Bridge Resistance	350 ohms nominal
Construction	Stainless steel 17-4 PH
Sealing	IP67
Cable	20 ft., polyurethane
Approvals	NTEP CC# 12-022, Factory Mutual



CABLE COLOR CODE
GREEN = +EX
BLACK = -EX
WHITE = +SIG
RED = -SIG

QuickFacts™

Models and specifications subject to change without notice.
Printed in the USA. © Fairbanks Scales Inc.

Call toll-free for the Fairbanks representative nearest you:

(800) 451-4107

Internet Address: <http://www.Fairbanks.com>