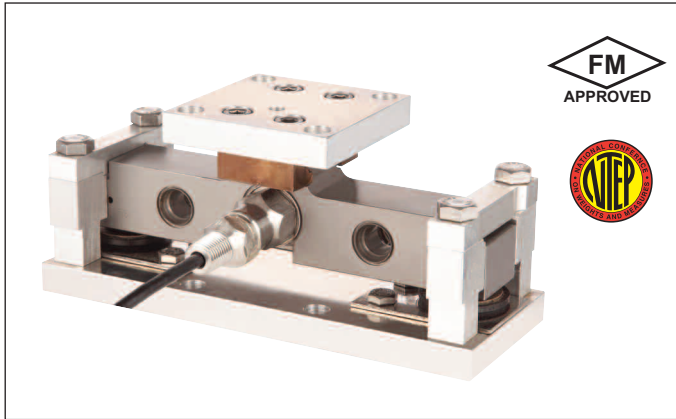


# FAIRBANKS®

## OMNICELL® 9109 SERIES WEIGHING ASSEMBLY



Fairbanks' Omnicell 9109 Series double-ended shear beam weighing assembly is unmatched in adjustability by changing the orientation of only a few components.

### APPLICATIONS

- Bins
- Hoppers
- Silos
- Tanks
- Agitated conditions
- Existing site conversions

### FEATURES

- Capacity ranges of 1000 to 50,000 lbs.
- Infinite mounting possibilities.
- Mounting system accommodates 3-D movement.
- Load cells are 17-4 PH stainless steel with true hermetic seals at gauging and cable entry areas.
- Compact design (40 percent smaller than competition).
- Welds are ground and polished, corners are radiused.
- Machined mounts for enhanced appearance.
- Neutral Axis Loading eliminates the introduction of shear, tension or torque forces which can contribute to inaccurate weightings.
- Larger mounting assemblies available upon request.
- NTEP and Factory Mutual approved load cell.

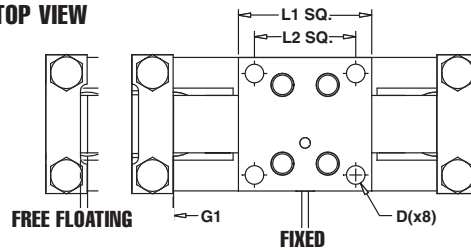
### DIMENSIONS (in inches)

Capacity	L1	L2	L3	H1	H2	H3	W1	W2	W3	D	G1	G2	G3	G4
1,000 lbs. to 10,000 lbs.	2.95	2.28	7.87	2.68	3.46	0.47	2.95	2.91	3.11	0.39	0.02	0.12	0.02	0.12
25,000 lbs.	3.94	2.99	10.24	3.54	4.61	0.75	3.94	4.09	4.33	0.55	0.01	0.21	0.02	0.14
50,000 lbs.	5.51	4.13	12.99	4.69	6.42	0.98	5.51	5.51	5.83	0.78	0.04	0.28	0.04	0.20

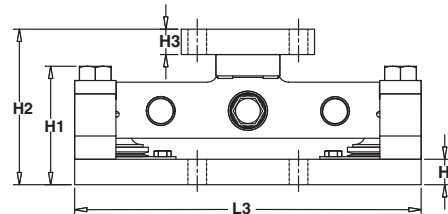
### PERFORMANCE SPECIFICATIONS

Capacities	1000 to 50,000 lbs.
Mount Construction	Stainless steel, Zinc plated mild steel
Load cell:	
Full Scale Output (FS)	2.0 mV/V ± 0.002%
Combined Error	≤ 0.03% FS
Non-Linearity	≤ 0.03% FS
Hysteresis	≤ 0.02% FS
Creep Error (30 min.)	≤ 0.049% FS
Compensated Temperature	14° F to 104° F (-10° C to 40° C)
Excitation Voltage	5-15 VDC
Overload	Safe = 200%; Ultimate = 300%
Sideload	Safe = 300%
Bridge Resistance	500 ohms nominal
Construction	Stainless steel 17-4 PH
Sealing	IP68/IP69K
Cable	25 ft., polyurethane
Approvals	FM, NTEP CC# 04-072

### TOP VIEW

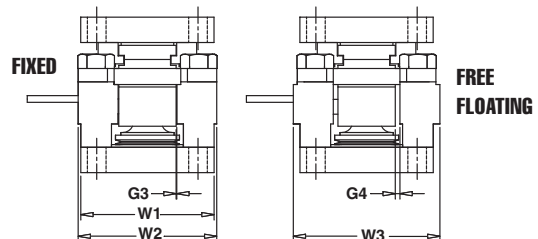


### FRONT VIEW



CABLE COLOR CODE	
RED	=+EX
BLACK	=-EX
GREEN	=+SIG
WHITE	=-SIG

### SIDE VIEWS



### QuickFacts™

Models and specifications subject to change without notice.  
Printed in the USA. © Fairbanks Scales Inc.

Call toll-free for the Fairbanks representative nearest you:

**(800) 451-4107**

Internet Address: <http://www.Fairbanks.com>