

# ECP38CX

## CONCRETE PUMPS / BOOM PUMPS



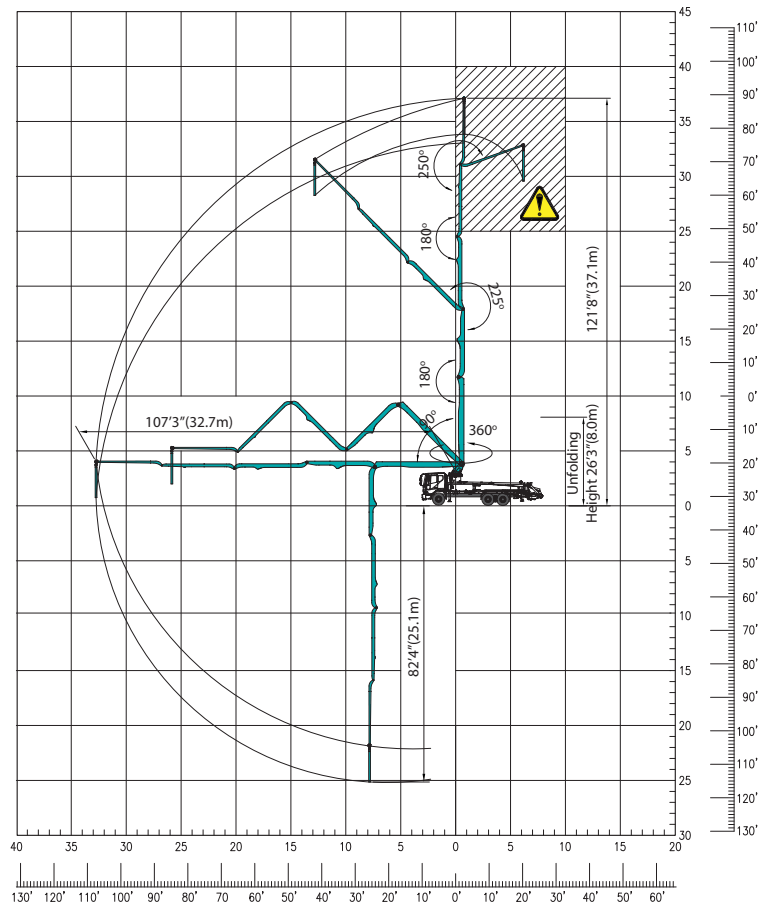
Dimensions will vary with different truck makes, models and specifications. Varies with options selected. Based on Model MACK MRU 613 with 2116 pump cell. Weights are approximate and include pump, boom, truck, driver and full fuel.

BOOM	
Folding type	5-section ZR-folding
Max. vertical reach	121'8" (37.1m)
Max. horizontal reach	107'3" (32.7m)
Max. depth reach	82'4" (25.1m) (incl. End hose 3m)
Unfolding height	26'3" (8m)
Slewing angle	360deg.
End hose length	10' (3m)
Delivery pipe dia.	5" (125mm)

PUMP	
Pump cell	2116
Control system	Closed Free Flow Hydraulic
Main pump	A4VG125x2
Concrete cylinder (mm)	9"x83" (230x2,100mm)
Strokes No.(per min.)	30
Concrete output*	210yd <sup>3</sup> /h (160m <sup>3</sup> /h)
Concrete pressure*	1,233psi (85bar)
Transfer tube type	S-Tube, S2318 (Dia. 230-180mm)
Volume of hopper (liter)	158gal (600L)

\*Rod side. Ouput & pressure are theoretical data.

## WORKING RANGE

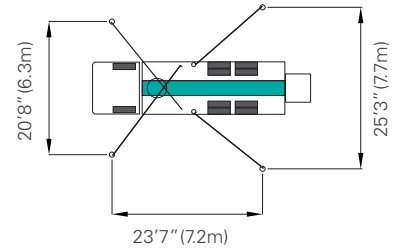


Don't use in caution area

## FEATURES & SUPPLY SCOPE

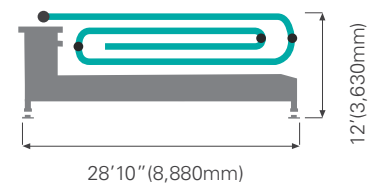
- |   |  |
|---|--|
| Inductive proximity switch with indicator | Flushing water pump(30bar)               |
| Single lip concrete piston                | Water tank (600L)                        |
| Hard-chromed concrete cylinders           | Spray nozzle with 15m hose               |
| Outrigger pilot check valves              | Auto lubrication system for hopper       |
| Greasing port on boom link and pedestal   | Tungsten carbide for wear ring and plate |
| Working light on pedestal                 | Flap elbow(180-150mm) with cleaning port |
| Aluminum platform(non-skid)               | Reducing pipe(150-125mm)                 |
| Bubble gauge on both side                 | Agitator motors on both side hopper      |
|   | Working light on hopper                  |

## OUTRIGGER SPREAD



Front outrigger type X(Diagonal) Extension  
Rear outrigger type Swing-out

## UPPER BODY DIMENSION



## OPTIONS

- Twin wall pipe line
- Working light on boom
- Auto-lubrication for boom and pedestal
- Safety(OSS) system
- Hopper cover
- Central manual lubrication for hopper
- Safety device for hopper
- Vibrator on hopper grid
- Stainless hand rail
- Auxiliary fuel tank on one side rear outrigger
- Customized color

\*EVERDIGM reserves the right to make changes to specifications and supply scope. Specifications and supply scope are subject to change without prior notice.

# EVERDIGM

### EVERDIGM HEAD OFFICE

49, Buyeong-gil, Jincheon-eup, Jincheon-gun, Chungcheongbuk-do, Korea  
Tel\_+82-43-530-3300 Fax\_+82-43-530-3429

### EVERDIGM AMERICA

655 West Lytell Street, Metter, Georgia 30439, USA  
E-mail anthony@everdigm.com Tel\_+1-912-314-2528

### CPE AMERICA

655 West Lytell Street, Metter, GA 30439, USA  
www.cpeamerica.com  
sebastian@cpeamerica.com  
jeff@cpeamerica.com  
Tel\_1-651-269-2319

Authorized distributor of EVERDIGM Concrete Pumps

