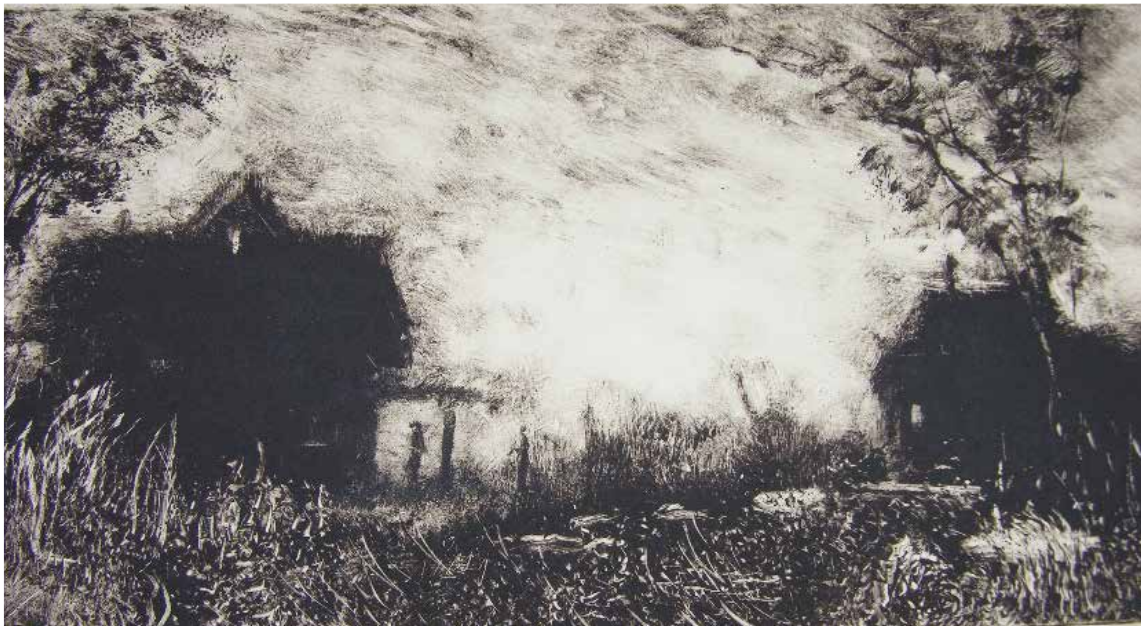




## *Diane Tomash: Plein-Air Paintings and Prints*

*Diane Tomash: Plein Air Paintings and Prints* is an exhibition showcasing the recent works of Noyes Associate Artist Diane Tomash.



Diane Tomash, *The Strength of the Neighbor*, Monotype

Diane Tomash has long created paintings and prints of landscapes that echo the topography of the human mind. Primarily a plein-air painter, Tomash seeks to create landscapes that convey the emotion that she feels at different times of the day and in different weather conditions. As the artist states:

*The inexplicable, undeniable reality of nature is a true inspiration. Painting on location is important to me. Capturing nature's ever changing moods is a challenge which provides great satisfaction. Many of the on-location paintings and drawings become the source for larger studio works.*

The colors of the sky, line quality of clouds and vegetation, and demarcation of distance all inform the moods of these works.

Since beginning her artistic career as an oil painter, Tomash has branched out into printmaking. Her monotypes have earned prominence. The monotyping process begins by drawing or painting on a smooth, non-absorbent surface such as copper, zinc or glass. The image is then transferred onto a sheet of paper by pressing the non-absorbent surface against the paper, typically using a printing press.

Monotyping produces a unique print, as most of the ink is removed during the initial pressing. Subsequent reprintings are sometimes possible, though they differ greatly from print to reprint.

In her most recent work, Tomash explores the dynamic between earth and air. She seeks out ephemeral moments when light dominates the perception of space and time:

*The concept of my current work draws attention to the vast and very complex relationship between the earth and sky. I seek to achieve a sense of time, place, light, and weather's powerful impact on all things including the human spirit. The artwork evokes mystery and delight in reality and reflects more than meets the eye.*

Her artwork has become a channel of expression to give visual evidence to her own inner dialogue and outward experiences.

Tomash is an elected member of the Catherine Lorillard Wolfe Art Club and the American Artists Professional League, both based in New York City. Her artwork has been exhibited at arts institutions across the country, including the National Academy and the Salmagundi Club. She has won








numerous awards and accolades throughout her career, including the prestigious Gold Medal of Honor from the Catherine Lorillard Wolfe Art Club. Her work has appeared in the Atlantic City Press and International Artist Magazine, and Who's Who in America.

A graduate of the Pennsylvania Academy of the Fine Arts and the Newark School of Fine and Industrial Art, Tomash has taught art throughout southern New Jersey for several years, most recently at the Noyes Museum. Her works are held in private collections throughout the United States, London, the Print Archives of the Pennsylvania Academy of the Fine Arts, and the Rohm and Haas Corporation in Philadelphia.



Diane Tomash, *Cloud Movement*, Oil on linen

**For more information about the Noyes Museum of Art of Stockton University go to:  
[www.noyesmuseum.org](http://www.noyesmuseum.org)**

						
<p>Funding for the Noyes Museum of Art is provided in part by the NJ State Council on the Arts/Department of State, a partner agency of the National Endowment for the Arts; the Geraldine R. Dodge Foundation and the Mr. and Mrs. Fred Winslow Noyes Foundation.</p>						