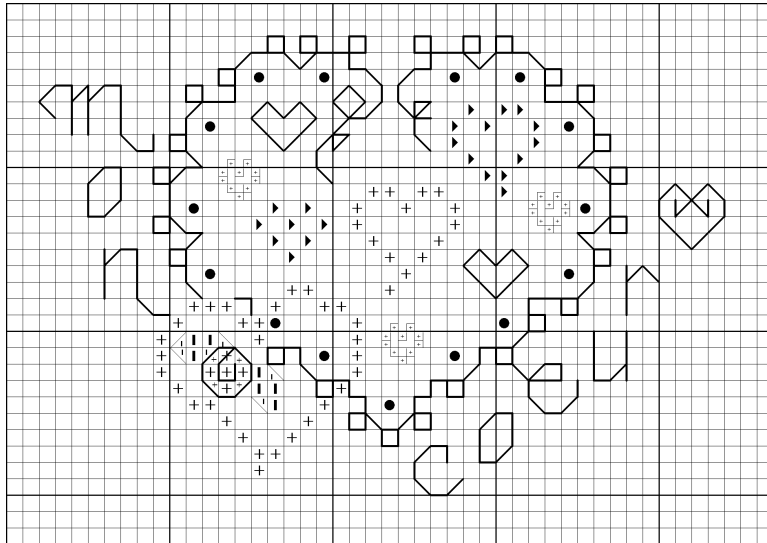


Mon Coeur

Design Size: 1 (7/8) " X 2 (11/16) "

Design Count: 42 X 38

Fabric: 32 count Natural Belfast Linen



Soie d'Alger Silk	
	4625 Dark Pink
▶	4222 Light Pink
I	3734 Green
	Perlee Crème or DMC #12 white perle cotton
The Thread Gatherer	
+	Silk N'Colors – Nan's Mulberry SNC 040
●	Mill Hill beads 42012 Royal Plum

Chart Instructions:

First backstitch your large white heart in the Soie Perlee Crème or the DMC Perle Cotton #12 white. On the chart above it is all the black lines but the heart motifs and writing and outlining on the rose ~check colour photo below. This gives you a good starting point for all other stitching.

Then follow the chart for the cross stitch portions as designated. Backstitching is all in Soie d'Alger 4625 dark pink. The beads are attached by SNC Nan's Mulberry.

This little piece can be framed or finished into whatever you like, a pincushion or scissors fob. I wanted celebrate going to Montreal (2006) to teach. It is such a cosmopolitan city and living in the west the lure of another language and just the old city feel, gave me inspiration to do this sample.

Mon coeur means 'my heart' – and I know that stitching has my heart!

Jeannette

