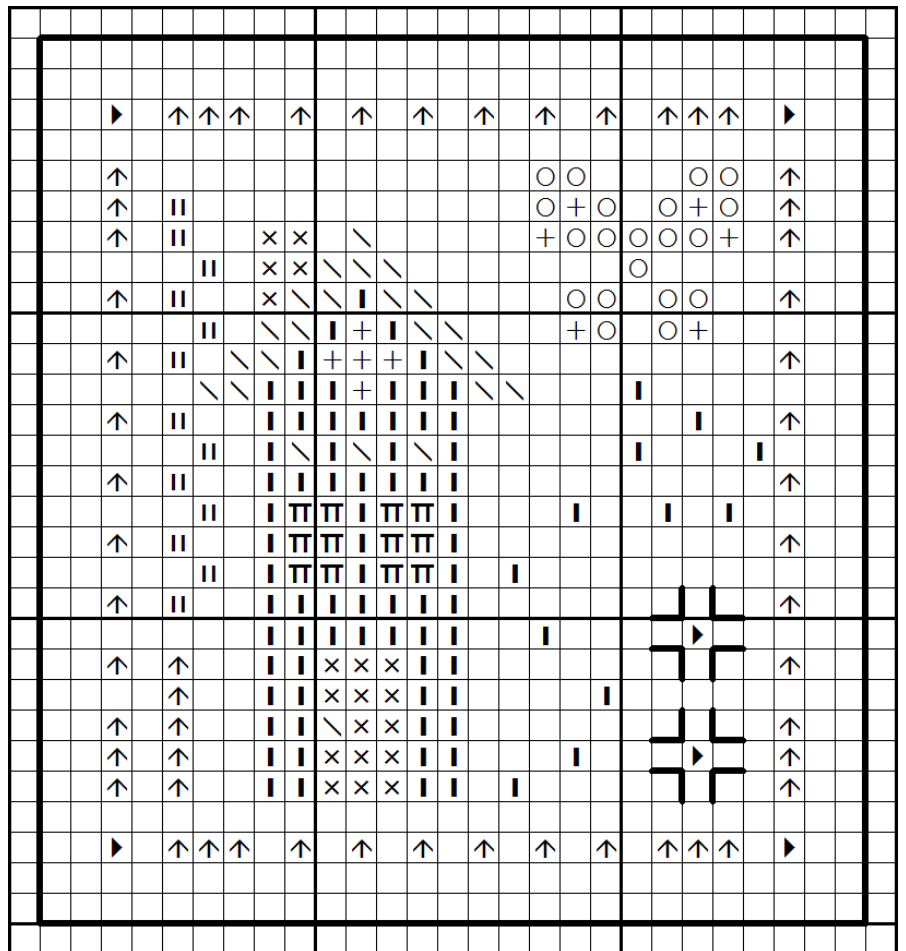


# Finger Pyn Pillows #1

Design Size: 27 x 29 Fabric: 36 Ct Neutral piece of fabric



Cross stitch as noted by colour key. Use 1 strand of floss.

Back stitch motifs in right corner- black lines in GA Holly Berry. Finish into a tiny pincushion, and enjoy for a sweet little finish or gift to a friend.

I used WDW Palomino (Herringbone) Wool felt as backing. I counted out 4 fabric threads, backstitched the outer black line in PC #12 ecru and used that as my guide for cutting the tiny square of wool felt and to finish.

In making a small little chart for a 'free' or thank you pattern; I of course couldn't resist making more, and loved how tiny they were and thought, they are like little finger pillows, and thus the little pyn pillows came to be! The other 3 are together in one chart available from JDD. Enjoy.

Symbol	The Gentle Art	DMC Floss
I	Caramel Corn	612
○	Creekbed	503/926&642
↑	Garden Gate	3787
▶	Holly Berry	3831
	<b>Weeks Dye Works</b>	
\	Flatfish	640
TT	Light Khaki	712/613
x	Merlot	221/814
+	Teal Frost	3768
	<b>DMC</b>	
	3011	