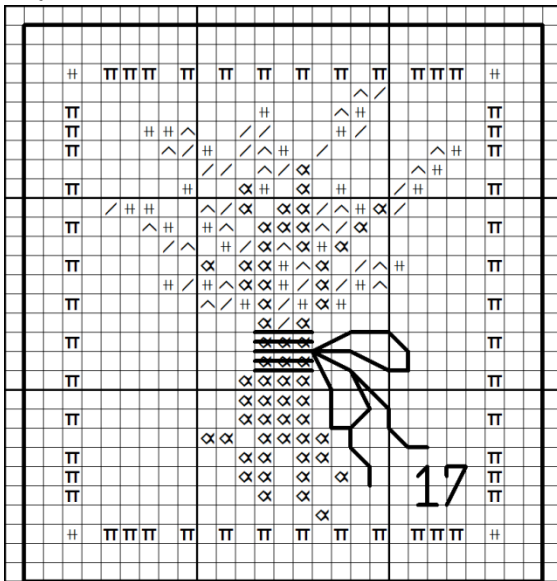
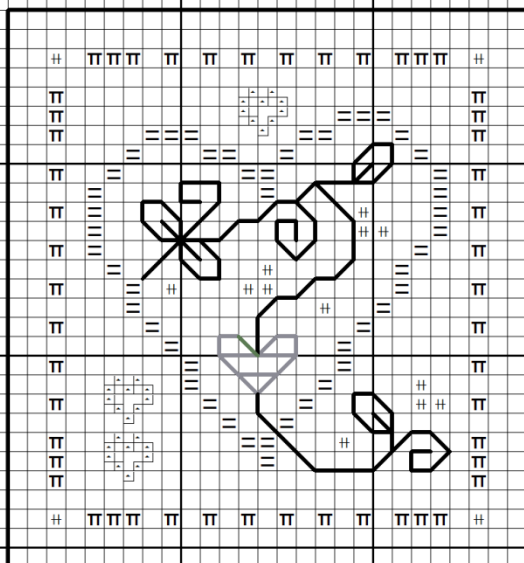
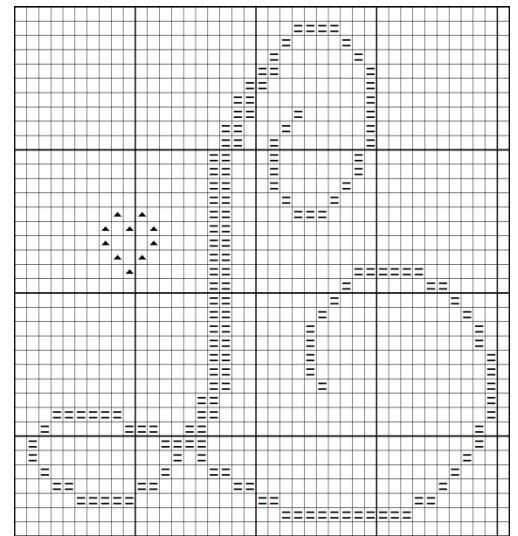


Lavender Finger Pyn Pillows

Design Size: 27 x 29 Fabric: 36 Ct Sprite By Picture This Plus



A year from now and we will be starting another trip that even in my best imaginings I couldn't have dreamt of. Thank you for coming on this great adventure on which we are sure to forge friendships and share our love of stitching. Here's to June 2017 and a trip that includes Provence and the Lavender fields that will make more amazing memories.



Symbol	The Gentle Art	DMC Floss
∨	Sugar Plum	340
/	Sweet Pea	3743
Classic Colorworks		
^	Purple Aster	3042
Weeks Dye Works		
#	Concord or Mulberry	3740
▲	Plum	3041/3836
⊗	Scuppernong	523/3012
≡	Williamsburg Blue	none
The Thread Gatherer		
π	Aged Antiquity or Oatmeal from GT	White/712

Cross stitch as noted by colour key. Use 1 strand of floss on 36ct.

Top to bottom # 1, 2, 3

1) Lavender Bundle:
Cross stitch as noted. Backstitch ribbon in WDW Concord and the date.

- 2) Heart pillow:** Cross stitch as shown. Back stitch vines and leaves in WDW Scuppernong. Back stitch heart in WDW Concord. Cross stitch tiny hearts over 1 fabric thread in WDW Plum.
- 3) L is for Lavender:** Backstitch the stem and leaves in WDW Scuppernong. Cross stitch the big L over 1 fabric thread in WDW Williamsburg Blue. Finish into a tiny pincushion, and enjoy for a sweet little finish or gift to friend. Add some Lavender for filling if you like.
- On # 1 & 2 I used WDW Iris (Plain) Wool felt as backing. On #3 I used WDW Eggplant (Plaid) Wool felt as backing. I should have counted out 4 fabric threads (but I was tired and did 2), backstitched the outer black line in PC #12 3743 and used that as my guide for cutting the tiny square of wool felt and to finish.