

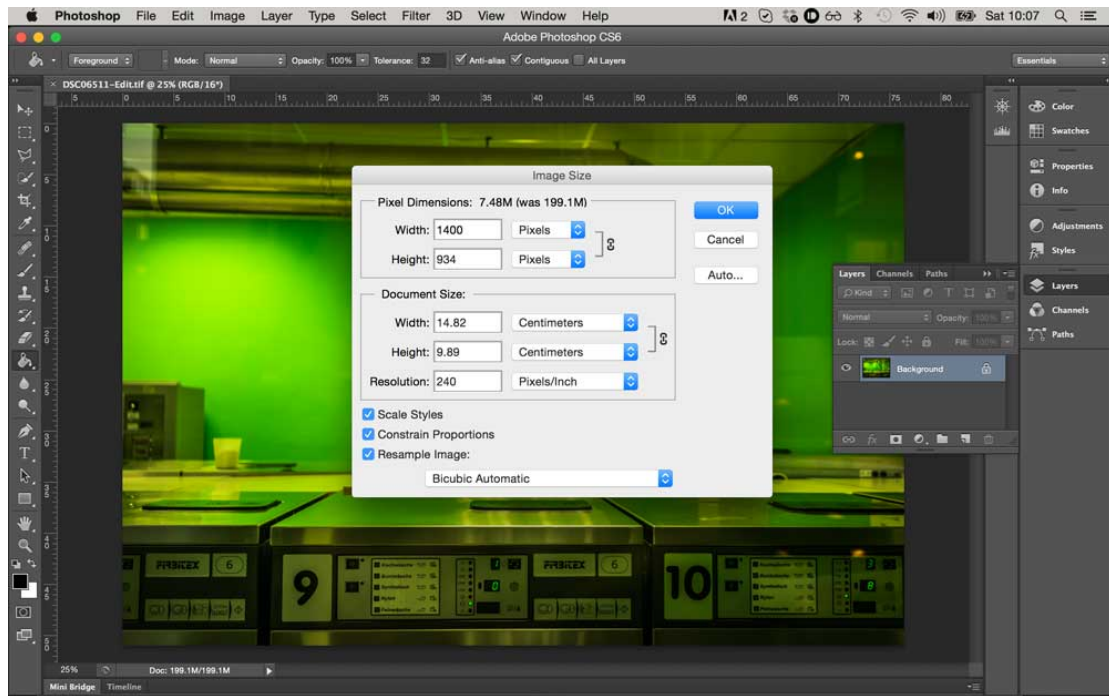
DPI Conversion For Competition

These notes are to help you with submissions of DPIs (Digitally Projected Images) in our competitions.

It is important that they are followed or your entries may not be accepted

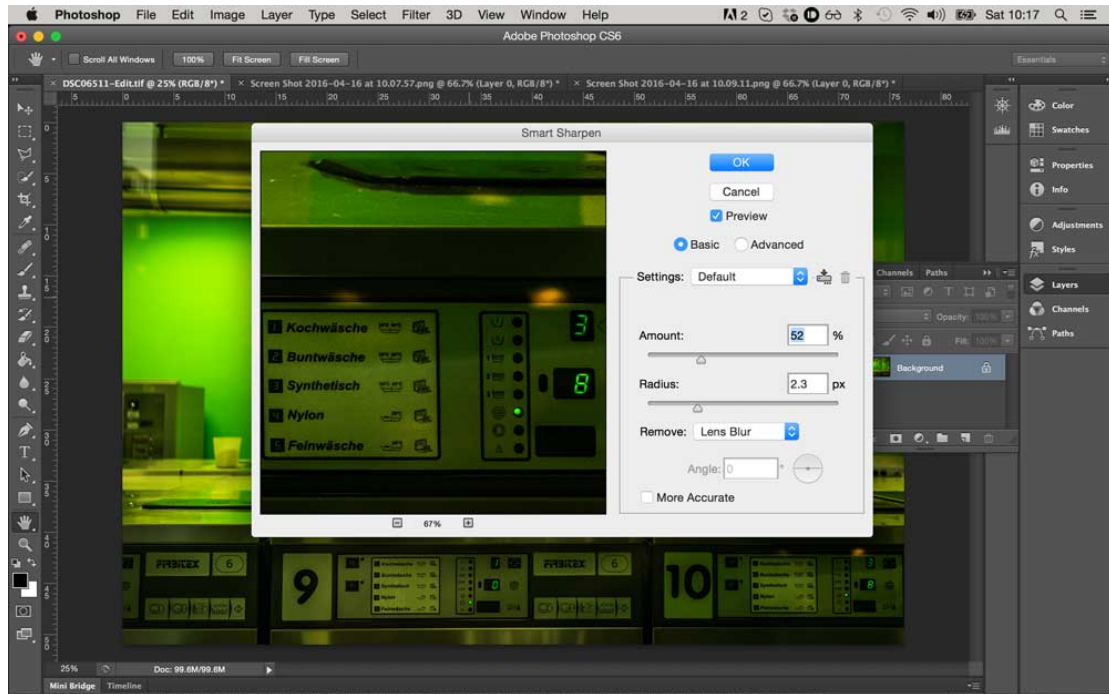
1. First make any alterations to your photo and save it (but do not sharpen it): this will be your master copy (do not close file).

2. Then go to Image > Image size, and in the image box tick the resample image box, then in the top box (i.e. pixel dimensions) and change as follows - Landscape dimension must not be more than 1400px wide by 1050px high and portrait images no larger than 1050px high.

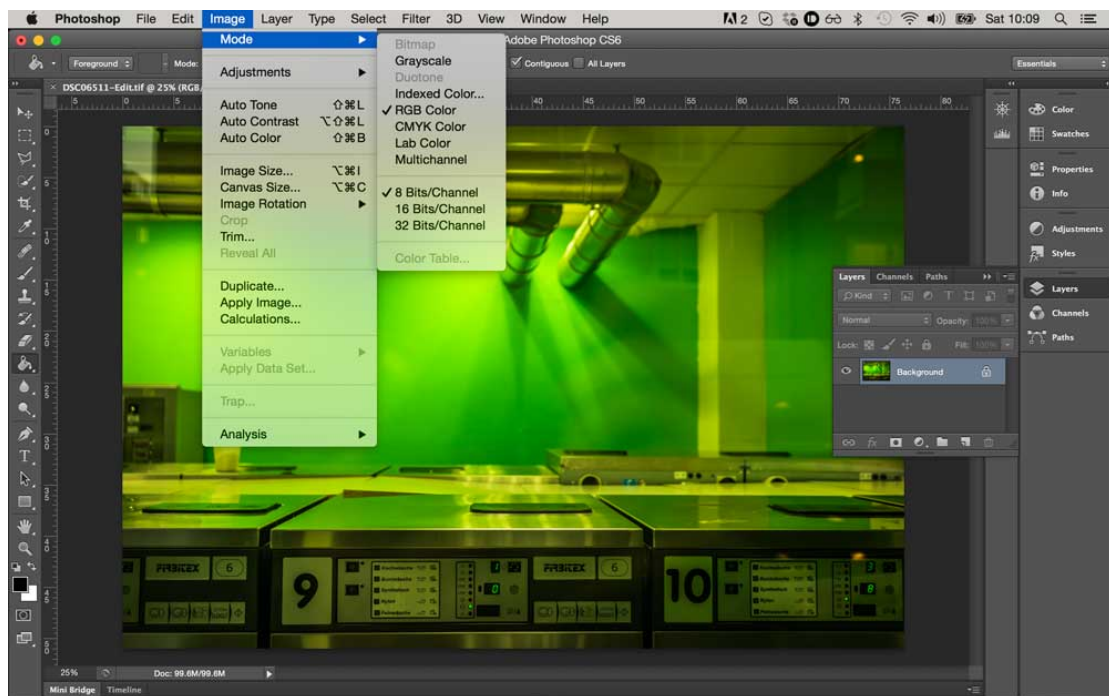


3. Please flatten image if there is more than one layer (Layer > Flatten image) and ensure that the image is 8 bit (Image > Mode > 8 bit) otherwise our competition software will not accept image.

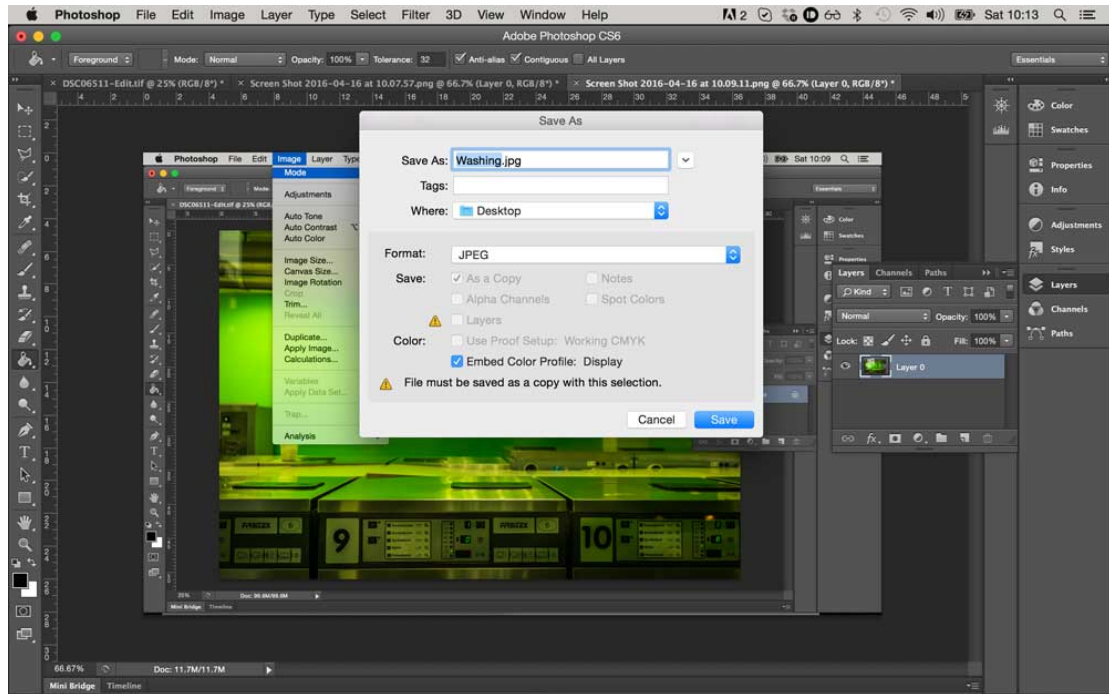
4. Then, sharpen as you wish. (Note that after discarding pixels when reducing image size there will be a softening of the image, so if a sharp image is required it will be necessary to sharpen at this stage (e.g. amount 50%), but beware of over-sharpening which causes 'halo' effects).



5. Convert colour space from Adobe 1998 (preferred setting in camera & for printing) to sRGB (setting required for projection and web). Edit > Convert to Profile with sRGB IEC61966 as Destination space.



6. Save image (File>Save As) in a new folder named e.g. Eric S/S or O/C (i.e. Set Subject or Own Choice). Save the photo as a “.JPEG” file with an appropriate title and ensure that this name is different from your original file, otherwise it may overwrite original high resolution file (PSD or TIFF).



7. Also ensure that the file size is less than 2-3 Mb when saving as a JPEG otherwise it will not load into Dicentra (the standard programme used for club and inter-club competitions). Now copy the converted files to a memory stick for submission. Please ensure that you provide a Title for each image otherwise they will not be entered for competitions.