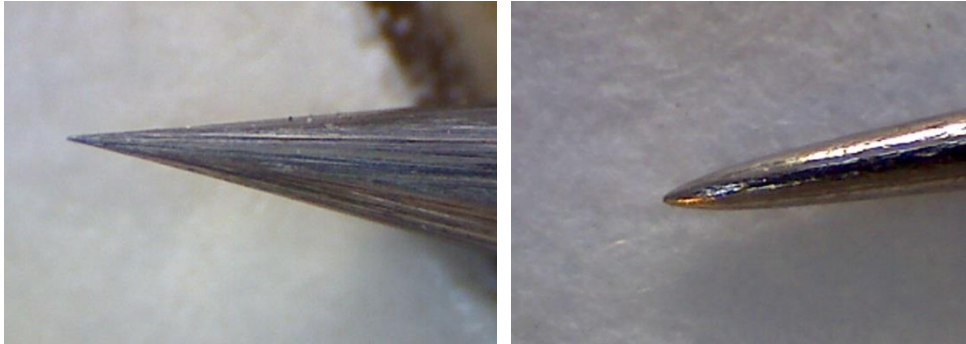


Dry point stylus by Vreededesign

John Vreede, 21Aug17

This stylus has a Carbide point sharpened to ~25 degree included angle, as in the 220x magnification below. I check every point under the microscope to make sure it's like this. The photo at right is the point of a 33mm long sharps needle at the same magnification.



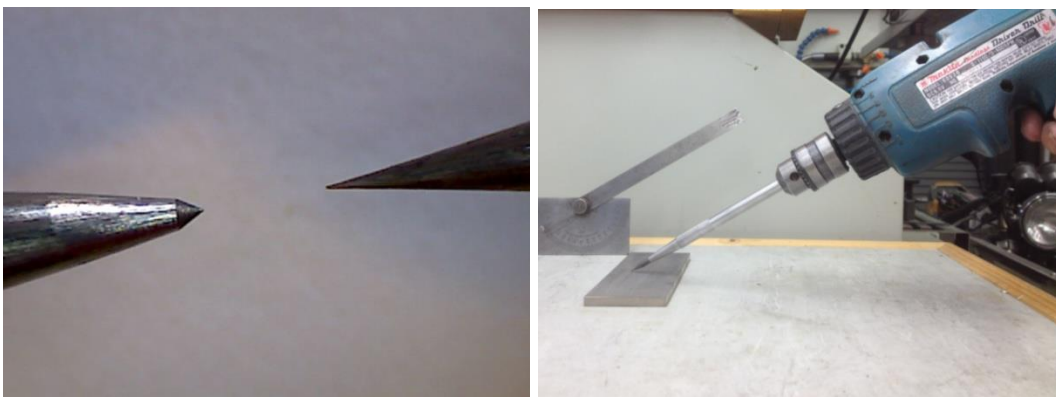
Carbide is very hard, so won't need re-sharpening very often. You'll know it needs re-sharpening if you look at the tip under a strong lamp (like a reading light) and can see a bright spot reflecting back, You should not be able to see the point, even under 2-4x magnification.

But with that, it is also brittle – if you drop this stylus on a hard surface the sharp tip will break off. Use the piece of rubber hose supplied to protect the point.

If you break a substantial piece of the tip off, it will need to be re-sharpened as I made them, by spinning it in an electric drill while holding it against a silicon carbide grind stone, as below. Some engineering shops in your local area may have a 'Green grit' wheel (which is how they are known) and could do it for you, or send it back to me (contact through vreededesign@gmail.com) and I'll re-sharpen it.



The 25° point will give very fine lines which may be too fine for some people. Although wet and dry paper is silicon carbide too and can re-shape the point, it's very slow and gives a rounded point much like the sharps needle above. However it can be re-shaped very quickly on a diamond hone to give any point angle you like as in the 60° point below (cf 25° point at right). Just make a cardboard template of half the angle you want as a guide and lightly rub the point spinning at 200-400rpm across the hone 10-15 times when reshaping a 25° point, (more rubbing if it's already reshaped).



The diamond hone is 1200 grit, Extra fine grade, Part number 070-030-00300 from www.arceurotrade.co.uk, ~£6 + postage. With it you could re-sharpen the point quickly yourself, if it wears or breaks, so it's a good investment.