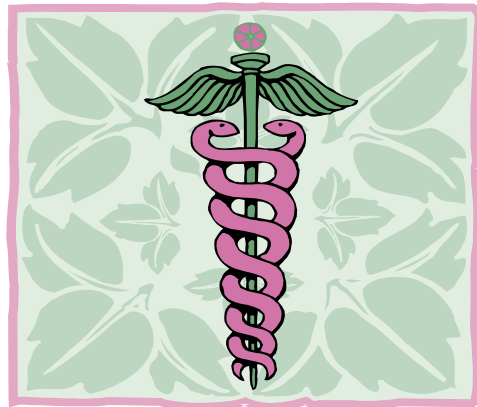


MEDICAL INSTITUTE OF PALM BEACH, INC.

**5821-B Lake Worth Rd.
Greenacres, FL 33463
Phone: (561) 964-5043
Fax: (561) 964-5685
www.medicalinstitutepb.edu**



**ANNUAL CAMPUS SECURITY REPORT
October 01, 2016**

Table of Contents

Policy Statements	4
Reporting Criminal Actions or Other Emergencies Occurring on Campus	4
Issuing Timely Warning Reports.....	4
Preparing Annual Disclosure of Crime Statistics	4
Reporting Criminal Offenses	4
Security of and Access to Campus Facilities	4
Campus Law Enforcement	4
Enforcement Authority of Security Personnel	4
Working Relationship of Campus Security Personnel with State and Local Law Enforcement Agencies	5
Encouraging Accurate and Prompt Crime Reporting	5
Pastoral and Professional Counselors and Voluntary, Confidential Crime Reporting	5
Security Awareness Programs for Students and Employees.....	5
Crime Prevention Programs for Students and Employees	6
Criminal Activity Off-Campus	6
Alcoholic Beverages.....	6
Illegal Drugs.....	6
Drug or Alcohol-Abuse Programs.....	6
Legal Sanctions Under Local, State, or Federal Law	7
Health Risks	7
Counseling, Treatment, and Rehabilitation	8
Disclosing the Report on the Results of Any Disciplinary Proceeding Conducted by the Institution Against a Student Who is the Alleged Perpetrator of a Crime or Offense	9
Emergency Response and Evacuation Procedures	9
Notifying the Campus Community of a Significant Emergency or Dangerous Situation	9
Emergency Process	9
Professional Judgment of Responsible Authorities.....	9
Persons Responsible for Confirming Significant Emergencies or Dangerous Situations and Notifying the Campus Community	10
Disseminating Emergency Information to the Larger Community	10
Testing Emergency Response and Evacuation Procedures on an Annual Basis	10
Sex Offenses	10
Sexual Assault Prevention Programs.....	10
Reporting Sex Offenses	11
Notifying the Appropriate Law Enforcement Authorities.....	11
Services for Victims of Sex Offenses.....	11
Requesting Reasonable Changes to Academic and Living Situations After an Alleged Sex Offense	11
Disciplinary Action in Cases of an Alleged Sex Offense	11
Sanctions the Institution May Impose Following a Final Determination of an Institutional Disciplinary Proceeding Regarding Sex Offenses.....	12
Registered Sex Offenders	12
Crime Statistics	13
Clery Geography	13
Criminal Offenses	144

Hate Crimes	16
VAWA (Violence Against Women Act) Offenses.....	20
Arrests.....	20
Disciplinary Actions	21

Policy Statements

Reporting Criminal Actions or Other Emergencies Occurring on Campus Issuing Timely Warning Reports

In the event that a situation arises, either on or off campus, that may constitute an immediate or continuing threat to the campus community, upon confirmation of a significant emergency or dangerous situation posing an immediate threat to the health and safety of students and employees, a campus wide "timely warning" will be issued. The warning will be issued by the school's designated campus security authorities (CSAs), comprised of the Campus Director and/or Campus Safety Officer, to all students, faculty, and staff on campus.

Anyone with information warranting a timely warning should report the circumstances to the Campus Director and/or Campus Safety Officer by contacting the school by phone or in person at the front desk.

Preparing Annual Disclosure of Crime Statistics

The school prepares this Annual Security Report to comply with the Jeanne Clery Disclosure of Campus Security Policy and Crime Statistics Act. This report is prepared in cooperation with the local law enforcement agencies surrounding each campus. Campus crime statistics include those reported to designated campus officials and local law enforcement agencies. Each year, by October 1st the report is made available publicly to students and employees, and they are notified of how they may obtain a copy of this report. Copies of the report may be obtained by contacting the school's Campus Director.

Reporting Criminal Offenses

To report a crime you may call the school directly or contact the Campus Director and/or Campus Safety Officer in person (non-emergencies), or dial 911 (emergencies only). Any suspicious activity or person seen in the parking lots or loitering around vehicles, inside buildings or around the campus should be reported to the Campus Director and/or Campus Safety Officer immediately.

Voluntary, Confidential Reporting

If you are the victim of a crime and do not want to pursue action within the institutional system or the criminal justice system, you may still want to consider making a confidential report. With your permission, the Campus Safety Officer on campus or a designee can file a report on the details of the incident without revealing your identity. The purpose of a confidential report is to comply with your wish to keep the matter confidential, while taking steps to ensure the future safety of yourself and others. With such information, the school can keep an accurate record of the number of incidents involving students, determine where there is a pattern of crime with regard to a particular location, method, or assailant, and alert the campus community to potential danger. Reports filed in this manner are counted and disclosed in the annual crimes statistics for the institution.

Security of and Access to Campus Facilities

Access to the campus is restricted during non-business hours. The campus is opened by a school official at 8:00 am and is closed at 10:00 pm. The school remains closed on weekends. It is the responsibility of each staff and faculty member to ensure that all doors allowing access to their offices, classrooms, and other areas are secured at the end of each workday. The campus has an alarm system in place to notify the local law enforcement agency in case of a breach in the building or other emergency. Additionally, the maintenance personnel is in charge of examining the facilities daily and promptly notifying the Campus Director of any issues that may pose a serious concern to the security of the campus community.

Campus Law Enforcement

Enforcement Authority of Security Personnel

The institution designates campus security personnel or campus security authorities (CSAs), comprised mainly of a Campus Safety Officer and supporting staff, with proper training specific to public safety. The Campus Safety Officer has the authority to ask persons on campus for identification and to determine whether individuals have lawful business at the school. They also have the authority to address and report possible violations of institutional policies committed by students to the Campus Director. The Campus Safety Officer does not possess arrest power. Criminal incidents are referred to the local police who have jurisdiction on the

campus. All crime victims and witnesses are strongly encouraged to immediately report any crime to the Campus Safety Officer on campus and the appropriate police agency. Prompt reporting will assure timely warning notices on-campus and timely disclosure of crime statistics.

Working Relationship of Campus Security Personnel with State and Local Law Enforcement Agencies

The institution maintains a close working relationship with the local police department, which has jurisdiction over the campus. The designated campus security personnel of the institution will work closely with the investigative staff of the governing police department when incidents arise that require joint investigative efforts, resources, crime related reports and exchanges of information, as deemed necessary. There is no written memorandum of understanding between the school and the outlying police department.

Encouraging Accurate and Prompt Crime Reporting

Community members, students, faculty, staff, and guests are encouraged to report all crimes and public safety related incidents to the designated Campus Safety Officer on campus and/or Campus Director in a timely manner. The school does not have campus police.

To report a crime or an emergency you may visit or call the school at (561) 964-5043 or dial 911. To report a non-emergency security or public safety related matter, you may visit or call the school at (561) 964-5043 or contact the school in person.

In response to a call, the school will take the required action, by contacting the local authorities or asking the victim to report to the school to file an incident report. All incident reports are forwarded to the Campus Director for review and potential action by the President of the school. If assistance is required from the local police, the school will contact the appropriate unit. If a sexual assault or rape should occur, staff on the scene, including the designated Campus Safety Officer and other campus security authorities on site, will offer the victim assistance and help. Crimes should be reported to the Campus Director and/or Campus Safety Officer to ensure inclusion in the annual crime statistics and to aid in providing timely warning notices to the community, when appropriate.

Pastoral and Professional Counselors and Voluntary, Confidential Crime Reporting

The school does not employ any pastoral or professional counselors, but it does encourage faculty members, which possess a close, daily relationship with their students, to inform them of the procedures to report crimes on a voluntary, confidential basis for inclusion in the annual disclosure of crime statistics, if and when they deem it appropriate.

Security Awareness Programs for Students and Employees

During orientation students and employees are informed of services offered by external organizations that provide training and awareness on a series of campus security topics. Publications such as this one outline ways to maintain personal safety and security on campus. Students are told about crime on-campus and in surrounding neighborhoods. Similar information is presented to new employees. Crime Prevention Programs and Sexual Assault Prevention Programs are offered by external organizations and referred to students and employees on a continual basis.

In addition to seminars and presentations, information is disseminated to students and employees through crime prevention awareness packets, security alert posters, displays, videos, and other publications and advertisements. When time is of the essence, information is released to the campus community through security alerts posted prominently throughout campus.

A common theme of all awareness and crime prevention programs is to encourage students and employees to be aware of their responsibility for their own security and the security of others.

Crime Prevention Programs for Students and Employees

Crime Prevention Programs on personal safety and theft prevention are sponsored by various external organizations throughout the year. The designated campus security authorities refer and facilitate programs for student and employee orientations, providing a variety of educational strategies and tips on how to protect themselves from sexual assault, theft and other crimes. Some of these programs include:

Town of Palm Beach County Crime Watch

Webpage: <http://www.townofpalmbeach.com/index.aspx?NID=317>

Florida Crime Prevention Association

Webpage: <http://www.floridacrimeprevention.org>

Florida Crime Prevention Training Institute (FCPTI)

Webpage: <http://www.fcpti.com/fcpti.nsf/CourseSchedules?openform>

To enhance personal safety, and especially after an evening class, walk with friends or someone from class that you know well and avoid dark or poorly lit areas.

Criminal Activity Off-Campus

The school does not currently have any student organizations with off-campus housing facilities. However, the criminal activity procedures that are followed for students who engage in events at off-campus locations are governed by the same rules that apply for criminal activity on-campus. A chaperone present at the event will serve as the designee of the Campus Safety Officer on campus and will report any incidents back to him/her to follow suit with the usual procedures established for handling criminal activity. Criminal activity at recognized school events that take place off-campus will be monitored and recorded by the designee of the Campus Safety Officer and the local authorities will be contacted accordingly if assistance is required.

Alcoholic Beverages

The school is designated as an "alcohol-free" learning environment. The possession, sale, consumption, manufacture or the furnishing of alcohol on-campus is prohibited and governed by Florida state law (Florida Statutes, Title XXXIV, Chapter 562). Laws regarding the possession, sale, consumption, manufacture or furnishing of alcohol are controlled by the Division of Alcoholic Beverages and Tobacco, of the Florida Department of Business and Professional Regulation (DBPR). Violators are subject to institutional disciplinary action, criminal prosecution, fine and imprisonment. It is unlawful to sell, furnish or provide alcohol to a person under the age of 21. The possession of alcohol by anyone under 21 years of age in a public place or a place open to the public is illegal.

Illegal Drugs

The school is designated as an "drug-free" learning environment. The possession, sale, consumption, manufacture or furnishing of any controlled substance is illegal under both State (Florida Statutes, Title XLVI, Chapter 893) and Federal (United States Code, Title 21, Chapter 13 & Code of Federal Regulations, Title 21) laws. Violators are subject to institutional disciplinary action, criminal prosecution, fine and imprisonment.

Drug or Alcohol-Abuse Programs

The school has adopted and implemented a program to prevent the use of illicit drugs and the abuse of alcohol by students and employees. The program provides services related to drug use and abuse including dissemination of informational materials, educational programs, counseling services, referrals and institutional disciplinary actions. The institution's Student Services Department provides an overall coordination of the program with the support of other departments within the school.

All students and employees are prohibited from the unlawful possession, use, or distribution of illicit drugs and alcohol on the institution's property or as part of any of the institution's activities. Substance abuse is a widespread problem that not only seriously affects an individual's work performance, but may also pose potential health, safety and security risks. Our policy is designed to provide a drug and alcohol-free, healthy, safe and secure learning/work environment for all students and employees.

Legal Sanctions Under Local, State, or Federal Law

State law prohibits the possession of alcoholic beverages by persons under age 21. Violation of this offense is punishable by a definite term of imprisonment of up to 60 days and/or a \$500 fine; a subsequent offense is punishable by a definite term of imprisonment of up to one year and a fine of \$1,000. Possession of alcoholic beverages by a person under age of 21 may also result in curtailment of driving privileges. No person may sell, give, serve or permit to be served alcoholic beverages to a person under 21, and it is unlawful for a person under 21 to misrepresent his age in order to obtain alcohol. Violation of either of these offenses is also punishable by a definite term of imprisonment of up to 60 days and a fine of \$500. Misrepresentation of age also will lead to the curtailment of driving privileges.

Under state law, it is a crime for any person to possess or distribute controlled substances/drugs as described in Section 893.03, Florida Statutes, except as authorized by law. Punishment for such crimes ranges from first-degree misdemeanors (up to one-year imprisonment and up to a \$1,000 fine) to first-degree felonies (up to 30 years imprisonment and up to a \$10,000 fine). Specifically, possession of fewer than 20 grams of marijuana is punishable with imprisonment of up to one year and a fine of up to \$1,000; possession of more than 20 grams of marijuana is a third-degree felony with imprisonment of up to five years and a fine of up to \$5,000. Trafficking (distributing specified large quantities of various controlled substances) is punishable by a term of imprisonment up to life and a fine of \$25,000 to \$500,000, depending on the particular illicit drug and the quantity involved. Thus, possession of fewer than 28 grams of cocaine is a third-degree felony, while possession of more than 28 grams of cocaine trafficking in cocaine is a first-degree felony, punishable with a fine of up to \$250,000 and imprisonment up to life without eligibility for early release. The death penalty may be imposed if a person has brought large quantities of the substances into the state knowing the result would be the death of any person. Individuals who have been convicted of a felony involving the sale of or trafficking in, or conspiracy to sell or traffic in, a controlled substance under certain circumstances may be disqualified from applying for state employment.

Penalties under federal law for drug trafficking generally are greater than penalties under state law. Convictions on drug-related charges also may result in disqualification for federal financial aid for students. Punishments may include fines of up to eight million dollars (\$8,000,000) and life imprisonment. For more information you may refer to:

Florida Statutes

Title XLVI, Chapter 893 (drug-related) and Title XXXIV, Chapter 562 (alcohol-related).

U.S. Code (USC)

Title 21, Chapter 13, Subchapter I, Part D

Health Risks

Alcohol consumption causes a number of marked changes in behavior. It may increase aggressiveness, lower inhibitions, cloud judgment, reduce resistance, and hamper the ability to make decisions. The effects of alcohol are related to dose, rate of intake, body size and percentage of body fluid, expectations, social environment, physical conditions (disease or, more commonly, hormonal cycles can be factors), enzyme differences, and concentration of alcohol in a drink. Alcohol first affects the area of the brain responsible for higher functions, such as decision-making and social inhibitions, suppressing an individual's self-control. Alcohol in the blood slows reaction time, reduces muscle coordination and impairs eyesight, contributing to deficits in performance, judgment, memory, and motor skills. Even low doses significantly impair the judgment and coordination required to drive a car safely, increasing the likelihood that the driver will be involved in a crash. Moderate doses of alcohol may increase the odds of a variety of aggressive acts (violent crimes), including murder, rape, assault, vandalism, spouse and child abuse, and drunk driving. High doses of alcohol often cause marked impairment in higher mental functioning, severely altering a person's ability to learn and remember information, leading to blackouts and a general suspension of cognitive abilities. Heavy use may lead to various types of traumatic injury, chronic depression, suicide, fetal alcohol syndrome, respiratory failure, alcohol poisoning, and death.

Prolonged, heavy consumption of alcohol can result in long-term medical problems, including high blood pressure, increased risk of heart attack, pancreatitis, various cancers, cirrhosis of the liver, infectious diseases, mental disorders, and impairment of the central nervous system, all of which may lead to early death. Consistent use of alcohol can lead to tolerance, which is an indication of the body's adjustment to regular drinking, and is a warning sign of alcohol dependence. High tolerance may be an inherited function, which many researchers think is a sign of genetic predisposition to alcoholism. Sudden cessation of alcohol intake by

alcoholics is likely to produce withdrawal symptoms, including severe anxiety, tremors, hallucinations, and convulsions, which can be life-threatening.

Illicit drugs all have some health-threatening qualities, some more than others. Examples include increased heart rate and lung damage from marijuana; central nervous system disorders from cocaine, heroin, and hallucinogens; and liver, lung and kidney damage from inhalants. HIV infection also is spread widely among intravenous drug users. Even infrequent use of illicit drugs can result in physical afflictions, such as hangovers, cardiovascular damage, digestive problems, tremors, impaired sexual response, and injuries due to lost coordination. Other possible effects include reduced alertness and impaired performance at school or work, interpersonal conflicts, and financial difficulties. Dependence and addiction are constant threats to users of illicit substances. Regular abuse of these substances generally exposes users to criminal elements, which may lead to involvement in further criminal activities.

Counseling, Treatment, and Rehabilitation

Counseling Services staff are available by appointment or on an emergency basis to assist with alcohol and other drug related problems and contact is confidential. Counseling Services are available during the school's normal hours of operation to deal with any alcohol or drug related emergency, answer questions, and provide information.

The Student Services Department provides a confidential referral service with regard to alcohol and/or other drug problems; information on various aspects of alcohol and other drug use, misuse and abuse; and a reference library for personal and academically related research. Re-entry programs for students and employees are handled on a case-by-case basis by the Campus Director.

Members of the campus community are encouraged to seek assistance and/or support for themselves or others through any of the following resources:

Center for Family Services
4101 Parker Avenue
West Palm Beach, FL
(561) 616-1222

Detox Solutions of the Palm Beaches LLC
580 Village Blvd #210
West Palm Beach, FL 33409
(561) 491-4171

Drug Abuse Treatment Association
1041 45th Street
West Palm Beach, FL
(561) 844-9661

Family Health Counseling Center, Inc.
2677 Forest Hill Boulevard
West Palm Beach, FL 33406
(561) 433-0123

Life Changes Addiction Treatment Center
900 Osceola Dr., Suite 200
West Palm Beach, FL 33409
(561) 847-0930

Palm Beach Institute: Drug and Alcohol Rehab Treatment
310 10th St,
West Palm Beach, FL 33401
(855) 470-2050

National Institute on Drug Abuse (NIDA)
Webpage: <http://www.drugabuse.gov/related-topics/treatment>

Disclosing the Report on the Results of Any Disciplinary Proceeding Conducted by the Institution Against a Student Who is the Alleged Perpetrator of a Crime or Offense

The school will, upon written request, disclose to the alleged victim of a crime of violence, or a non-forcible sex offense, the results of any disciplinary hearing conducted by the school against the student who is the alleged perpetrator of the crime or offense. If the alleged victim is deceased as a result of the crime or offense, the school will provide the results of the disciplinary hearing to the victim's next of kin, if so requested.

Emergency Response and Evacuation Procedures Notifying the Campus Community of a Significant Emergency or Dangerous Situation

The school has implemented an Emergency Response and Evacuation Plan that outlines the school's emergency response and evacuation procedures. A copy of this plan may be obtained from the Campus Director. Upon confirmation of a significant emergency or dangerous situation involving an immediate threat to the health or safety of students or employees on campus, the school will make a campus-wide announcement to all students and employees. The Campus Director will notify the campus community of the necessary steps to take, provided that the notification does not compromise the ability to contain the emergency or endanger additional students or employees.

Emergency Process

Confirming That There Is a Significant Emergency or Dangerous Situation

In the event of a report of a significant emergency or dangerous situation to any staff member, the staff member will contact the Campus Director or President to report the situation. The Campus Director or President will then review the situation, and if appropriate confer with the local authorities or other first responders to confirm the issue involved and determine if any future steps are warranted. If the report is valid and the circumstances warrant notifying the campus community, the school will make a campus-wide announcement to all students and staff through the Campus Director to advise the students and employees accordingly and in a timely manner.

Determining the Appropriate Segment or Segments of the Campus Community to Receive a Notification

The Campus Director or President will determine the appropriate segments of the campus community to receive a notification. The notification will be passed on to the faculty and staff for immediate dissemination to all students and employees present.

Determining the Content of the Notification

The Campus Director or President will determine the content of the notification (i.e., how much information is appropriate to disseminate at different points in time), which will then be passed on to the faculty and staff for immediate dissemination to all students and employees present.

Initiating the Notification System

The Campus Director will initiate the notification system. The notification will be passed on to the faculty and staff for immediate dissemination to all students and employees present.

Professional Judgment of Responsible Authorities

In the event of a significant emergency or dangerous situation, the institution will, without delay, and taking into account the safety of the community, determine the content of the notification to be made to students and employees, and initiate the notification system, unless issuing the notification will, in the professional judgment

of responsible authorities, compromise efforts to assist a victim or to contain, respond to, or otherwise mitigate the emergency.

Persons Responsible for Confirming Significant Emergencies or Dangerous Situations and Notifying the Campus Community

The Campus Director and/or President will be in charge of determining the validity of reports regarding significant emergencies or dangerous situations and notifying the campus community accordingly.

Disseminating Emergency Information to the Larger Community

Upon confirmation of a significant emergency or dangerous situation involving an immediate threat to the health or safety of students or employees on campus, the school will immediately notify the campus community, unless issuing a notification will compromise efforts to contain the emergency.

The school will utilize its faculty and staff to inform all students and employees on campus of the need to immediately evacuate the premises to a safe location. Depending upon the nature of the emergency, the Campus Director or President will determine if the notification will compromise the ability to contain the emergency or endanger additional students or staff members.

Testing Emergency Response and Evacuation Procedures on an Annual Basis

Announce and Unannounced Tests

The school will conduct tests of the emergency response and evacuation procedures annually and such tests may be announced or unannounced.

Publicizing the Emergency Response and Evacuation Procedures and Conducting at Least One Test per Calendar Year

The emergency response and evacuation procedures are publicized on an annual basis to all students and employees through dissemination of this report. At least one test will be performed each calendar year to assure the effectiveness of the Emergency Response and Evacuation Plan.

Documenting Each Test

The institution will document each test conducted. A description of the practice drill exercise along with a record of the date, time, and whether it was announced or unannounced will be maintained by the Campus Director.

Sex Offenses

Sexual Assault Prevention Programs

The school educates the campus community about sexual assaults and date rape during orientation. The Student Services Department offers sexual assault information to students and employees upon request. Literature on date rape education, risk reduction, and institution response is available upon request. Some of these resources include:

RAINN (Rape, Abuse & Incest National Network)

Webpage: <https://www.rainn.org/about-rainn/sexual-assault-awareness-prevention-and-education>

Origins of Hope – Treatment for Women

Webpage: <https://www.originsofhope.com>

Sexual Violence Prevention Program

Webpage: <http://www.floridahealth.gov/programs-and-services/prevention/sexual-abuse-or-violence-prevention/index.html>

Sabino Recovery

Webpage: <http://www.sabinorecovery.com>

Reporting Sex Offenses

If you are a victim of a sexual assault at the school, your first priority should be to get to a place of safety. You should then obtain necessary medical treatment. The school strongly advocates that a victim of sexual assault report the incident in a timely manner. Time is a critical factor for evidence collection and preservation. Victims should try to preserve all evidence, do not throw away articles of clothing, or any other items that might help the investigation of the crime. Also, try not to wash or change clothing as you seek immediate assistance, unless otherwise necessary. You are also encouraged to document any injuries sustained by taking photographs and preserving them as proof for the local authorities. An assault should be reported directly to the Campus Safety Officer on campus and/or Campus Director or by dialing 911.

Notifying the Appropriate Law Enforcement Authorities

Filing a police report with the help of the campus security authority present will not obligate the victim to prosecute, nor will it subject the victim to scrutiny or judgmental opinions from staff. Filing a police report will:

- ensure that a victim of sexual assault receives the necessary medical treatment and tests, at no expense to the victim;
- provide the opportunity for collection of evidence helpful in prosecution, which cannot be obtained later (ideally a victim of sexual assault should not wash, douche, use the toilet, or change clothing prior to a medical/legal exam);
- assure the victim has access to free confidential counseling from counselors specifically trained in the area of sexual assault crisis intervention.

The Campus Safety Officer on campus or any other campus security authority present will guide the victim through the available options and support the victim in his/her decision.

Services for Victims of Sex Offenses

Various counseling options for victims of sex offenses are available to students from the Admissions Department upon request. These services include:

Victim Services and Sexual Assault Response Team Center
205 North Dixie Highway, Suite 5.1100
West Palm Beach, FL 33401
(561) 355-2418 Option 3

Victim Services and Sexual Assault Response Team Center
4210 N. Australian Avenue
West Palm Beach, FL 33407
(861) 625-2568

National Sexual Assault Hotline
1-800-656-4673

Requesting Reasonable Changes to Academic Situations After an Alleged Sex Offense

Student victims have the option to change their academic after an alleged sexual assault, if such changes are reasonably available to the institution.

Disciplinary Action in Cases of an Alleged Sex Offense

Institutional disciplinary proceedings will be followed in the event of an alleged sex offense. The victim and the accused will each be allowed to choose one person who has had no formal legal training to accompany them throughout the institutional disciplinary proceeding. Both the victim and the accused will be informed of the final outcome of the institutional disciplinary proceeding.

Sanctions the School May Impose Following a Final Determination of an Institutional Disciplinary Proceeding Regarding Sex Offenses

A student found guilty of violating the school's sexual misconduct policy could be criminally prosecuted in the state courts and may be suspended or expelled from the school for the first offense.

Registered Sex Offenders

In accordance to the Campus Sex Crimes Prevention Act of 2000, which amends the Jacob Wetterling Crimes Against Children and Sexually Violent Offender Registration Act, the Jeanne Clery Act, and the Family Educational Rights and Privacy Act of 1974, the school is providing a link to the Florida Department of Law Enforcement (FDLE) Sex Offender Registry. This act requires institutions of higher education to issue a statement advising the campus community where law enforcement information provided by a State concerning registered sex offenders may be obtained. It also requires sex offenders already required to register in a State to provide notice of each institution of higher education in that State at which the person is employed, carries a vocation, or is a student.

Registry information provided shall be used for the purposes of the administration of criminal justice, screening of current or prospective employees, volunteers or otherwise for the protection of the public in general and children in particular. Unlawful use of the information for purposes of intimidating or harassing another is prohibited and willful violation shall be punishable as a Class 1 misdemeanor.

Sex offender information in the State of Florida is compiled by the Florida Department of Law Enforcement. You may access the registry online at the following link:

<http://offender.fdle.state.fl.us/offender/Search.jsp>

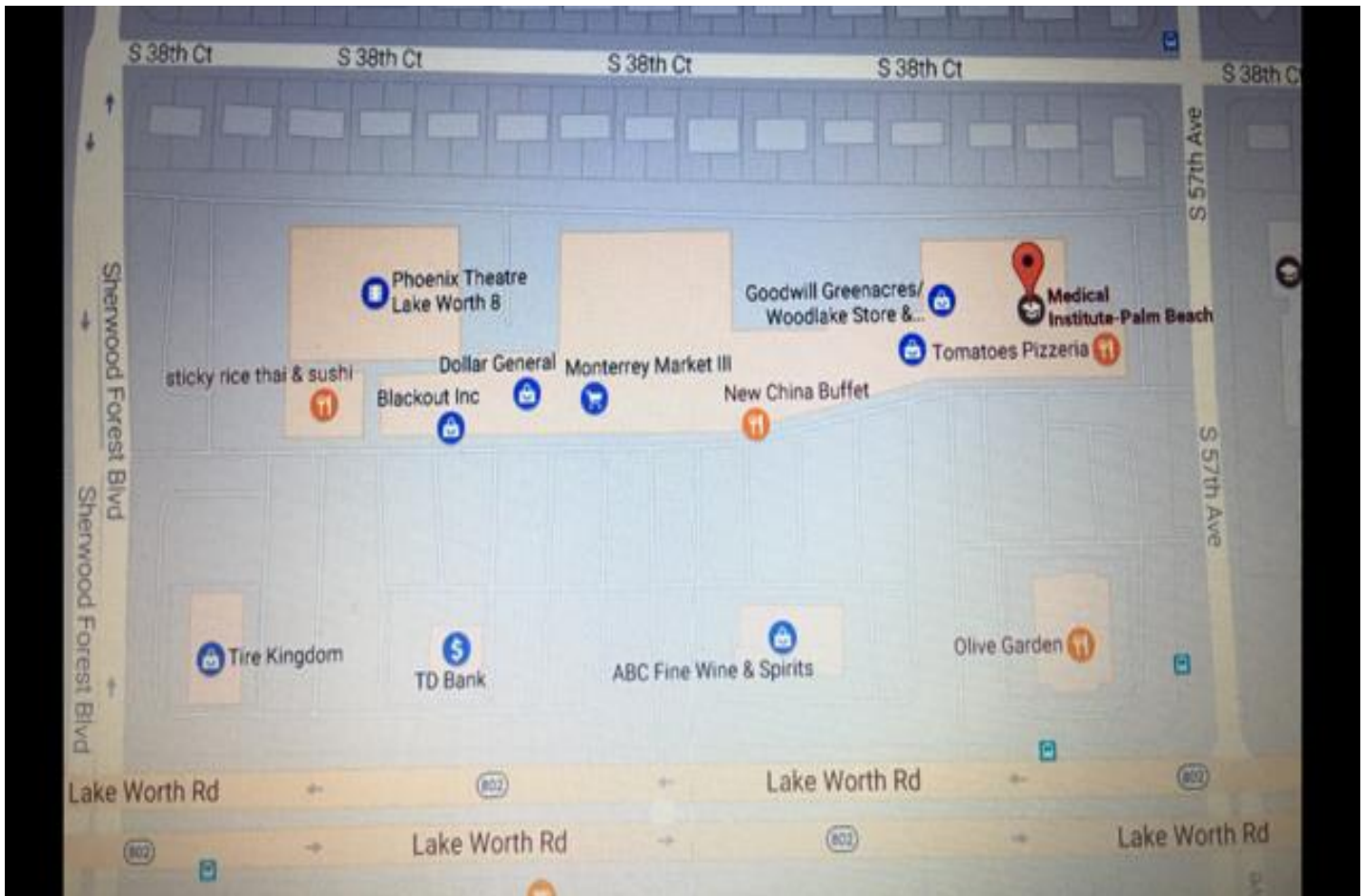
Crime Statistics

Clery Geography

Areas enclosed in green represent public property geography, such as thoroughfares, streets, sidewalks, and parking facilities that are within the campus, or immediately adjacent to and accessible from the campus. Areas enclosed in blue represent on-campus geography, such as any building or property owned or controlled by the institution within the same reasonably contiguous geographic area and used by the institution in direct support of, or in a manner related to, the institution's educational purposes.

Medical Institute of Palm Beach

5821-B Lake Worth Rd.
Greenacres, FL 33463



Criminal Offenses 2013 Calendar Year

Criminal Offense	Clery Geography	
	On-campus	Public Property
Murder and Non-negligent manslaughter	0	0
Negligent manslaughter	0	0
Sex offenses—Forcible		
Forcible rape	0	0
Forcible sodomy		
Sexual assault with an object	0	0
Forcible fondling	0	0
Sex offenses—Non-forcible		
Incest	0	0
Statutory rape	0	0
Robbery	0	0
Aggravated assault	0	0
Burglary	0	0
Motor vehicle theft	0	0
Arson	0	0

2014 Calendar Year

Criminal Offense	Clery Geography	
	On-campus	Public Property
Murder and Non-negligent manslaughter	0	0
Negligent manslaughter	0	0
Sex offenses—Forcible		
Rape	0	0
Fondling	0	0
Sex offenses—Non-forcible		
Incest	0	0
Statutory rape	0	0
Robbery	0	3
Aggravated assault	0	0
Burglary	0	0
Motor vehicle theft	0	1
Arson	0	0

2015 Calendar Year

Criminal Offense	Clery Geography	
	On Campus	Public Property
Murder/Non-negligent manslaughter	0	0
Negligent manslaughter	0	0
Sex offenses—Forcible		
Rape	0	0
Fondling	0	0
Sex offenses—Non-forcible		
Incest	0	0
Statutory rape	0	0
Robbery	0	3
Aggravated assault	0	0
Burglary	0	0
Motor vehicle theft	0	1
Arson	0	0

Hate Crimes

2013 Calendar Year

On-campus Clery Geography

Criminal Offense	Category of Bias					
	Race	Gender	Religion	Sexual orientation	Ethnicity/national origin	Disability
Murder and Non-negligent manslaughter	0	0	0	0	0	0
Sex offenses—Forcible						
Forcible rape	0	0	0	0	0	0
Forcible sodomy			0	0	0	0
Sexual assault with an object	0	0	0	0	0	0
Forcible fondling	0	0	0	0	0	0
Sex offenses—Non-forcible						
Incest	0	0	0	0	0	0
Statutory rape	0	0	0	0	0	0
Robbery	0	0	0	0	0	0
Aggravated assault	0	0	0	0	0	0
Burglary	0	0	0	0	0	0
Motor vehicle theft	0	0	0	0	0	0
Arson	0	0	0	0	0	0
Larceny-theft	0	0	0	0	0	0
Simple assault	0	0	0	0	0	0
Intimidation	0	0	0	0	0	0
Destruction/damage/vandalism of property	0	0	0	0	0	0

Public Property Clery Geography

Criminal Offense	Category of Bias					
	Race	Gender	Religion	Sexual orientation	Ethnicity/national origin	Disability
Murder and Non-negligent manslaughter	0	0	0	0	0	0
Sex offenses—Forcible						
Forcible rape	0	0	0	0	0	0
Forcible sodomy			0	0	0	0
Sexual assault with an object	0	0	0	0	0	0

Forcible fondling	0	0	0	0	0	0
Sex offenses—Non-forcible						
Incest	0	0	0	0	0	0
Statutory rape	0	0	0	0	0	0
Robbery	0	0	0	0	0	0
Aggravated assault	0	0	0	0	0	0
Burglary	0	0	0	0	0	0
Motor vehicle theft	0	0	0	0	0	0
Arson	0	0	0	0	0	0
Larceny-theft	0	0	0	0	0	0
Simple assault	0	0	0	0	0	0
Intimidation	0	0	0	0	0	0
Destruction/damage/vandalism of property	0	0	0	0	0	0

2014 Calendar Year On-campus Clery Geography

Criminal Offense	Category of Bias							
	Race	Religion	Sexual orientation	Gender	Gender identity	Disability	Ethnicity	National origin
Murder and Non-negligent manslaughter	0	0	0	0	0	0	0	0
Sex offenses—Forcible								
Rape	0	0	0	0	0	0	0	0
Fondling			0	0	0	0	0	0
Sex offenses—Non-forcible								
Incest	0	0	0	0	0	0	0	0
Statutory rape	0	0	0	0	0	0	0	0
Robbery	0	0	0	0	0	0	0	0
Aggravated assault	0	0	0	0	0	0	0	0
Burglary	0	0	0	0	0	0	0	0
Motor vehicle theft	0	0	0	0	0	0	0	0
Arson	0	0	0	0	0	0	0	0
Larceny-theft	0	0	0	0	0	0	0	0
Simple assault	0	0	0	0	0	0	0	0
Intimidation	0	0	0	0	0	0	0	0

Destruction/damage/vandalism of property	0	0	0	0	0	0	0	0
------------------------------------------	---	---	---	---	---	---	---	---

Public Property Clery Geography

Criminal Offense	Category of Bias							
	Race	Religion	Sexual orientation	Gender	Gender identity	Disability	Ethnicity	National origin
Murder and Non-negligent manslaughter	0	0	0	0	0	0	0	0
Sex offenses—Forcible								
Rape	0	0	0	0	0	0	0	0
Fondling			0	0	0	0	0	0
Sex offenses—Non-forcible								
Incest	0	0	0	0	0	0	0	0
Statutory rape	0	0	0	0	0	0	0	0
Robbery	0	0	0	0	0	0	0	0
Aggravated assault	0	0	0	0	0	0	0	0
Burglary	0	0	0	0	0	0	0	0
Motor vehicle theft	0	0	0	0	0	0	0	0
Arson	0	0	0	0	0	0	0	0
Larceny-theft	0	0	0	0	0	0	0	0
Simple assault	0	0	0	0	0	0	0	0
Intimidation	0	0	0	0	0	0	0	0
Destruction/damage/vandalism of property	0	0	0	0	0	0	0	0

2015 Calendar Year On Campus Clery Geography

Criminal Offense	Category of Bias							
	Race	Religion	Sexual orientation	Gender	Gender identity	Disability	Ethnicity	National origin
Murder/Non-negligent manslaughter	0	0	0	0	0	0	0	0
Sex offenses—Forcible								
Rape	0	0	0	0	0	0	0	0
Fondling			0	0	0	0	0	0
Sex offenses—Non-forcible								
Incest	0	0	0	0	0	0	0	0

Statutory rape	0	0	0	0	0	0	0	0
Robbery	0	0	0	0	0	0	0	0
Aggravated assault	0	0	0	0	0	0	0	0
Burglary	0	0	0	0	0	0	0	0
Motor vehicle theft	0	0	0	0	0	0	0	0
Arson	0	0	0	0	0	0	0	0
Simple assault	0	0	0	0	0	0	0	0
Larceny-theft	0	0	0	0	0	0	0	0
Intimidation	0	0	0	0	0	0	0	0
Destruction/damage/vandalism of property	0	0	0	0	0	0	0	0

Public Property Clery Geography

Criminal Offense	Category of Bias							
	Race	Religion	Sexual orientation	Gender	Gender identity	Disability	Ethnicity	National origin
Murder and Non-negligent manslaughter	0	0	0	0	0	0	0	0
Sex offenses—Forcible								
Rape	0	0	0	0	0	0	0	0
Fondling			0	0	0	0	0	0
Sex offenses—Non-forcible								
Incest	0	0	0	0	0	0	0	0
Statutory rape	0	0	0	0	0	0	0	0
Robbery	0	0	0	0	0	0	0	0
Aggravated assault	0	0	0	0	0	0	0	0
Burglary	0	0	0	0	0	0	0	0
Motor vehicle theft	0	0	0	0	0	0	0	0
Arson	0	0	0	0	0	0	0	0
Simple assault	0	0	0	0	0	0	0	0
Larceny-theft	0	0	0	0	0	0	0	0
Intimidation	0	0	0	0	0	0	0	0
Destruction/damage/vandalism of property	0	0	0	0	0	0	0	0

VAWA (Violence Against Women Act) Offenses

2013 Calendar Year – N/A

2014 Calendar Year

	Clery Geography	
Law Violation	On-campus	Public Property
Domestic violence	0	0
Dating violence	0	0
Stalking	0	0

2015 Calendar Year

	Clery Geography	
Crime	On Campus	Public Property
Domestic violence	0	0
Dating violence	0	0
Stalking	0	0

Arrests

2013 Calendar Year

	Clery Geography	
Law Violation	On-campus	Public Property
Weapons: carrying, possessing, etc.	0	0
Drug abuse violations	0	0
Liquor law violations	0	0

2014 Calendar Year

	Clery Geography	
Law Violation	On-campus	Public Property
Weapons: carrying, possessing, etc.	0	0
Drug abuse violations	0	0
Liquor law violations	0	0

2015 Calendar Year

	Clery Geography	
Crime	On Campus	Public Property
Weapons: carrying, possessing, etc.	0	0
Drug abuse violations	0	0
Liquor law violations	0	0

Disciplinary Actions 2013 Calendar Year

	Clery Geography	
Law Violation	On-campus	Public Property
Weapons: carrying, possessing, etc.	0	0
Drug abuse violations	0	0
Liquor law violations	0	0

2014 Calendar Year

	Clery Geography	
Law Violation	On-campus	Public Property
Weapons: carrying, possessing, etc.	0	0
Drug abuse violations	0	0
Liquor law violations	0	0

2015 Calendar Year

	Clery Geography	
Crime	On Campus	Public Property
Weapons: carrying, possessing, etc.	0	0
Drug abuse violations	0	0
Liquor law violations	0	0