

2

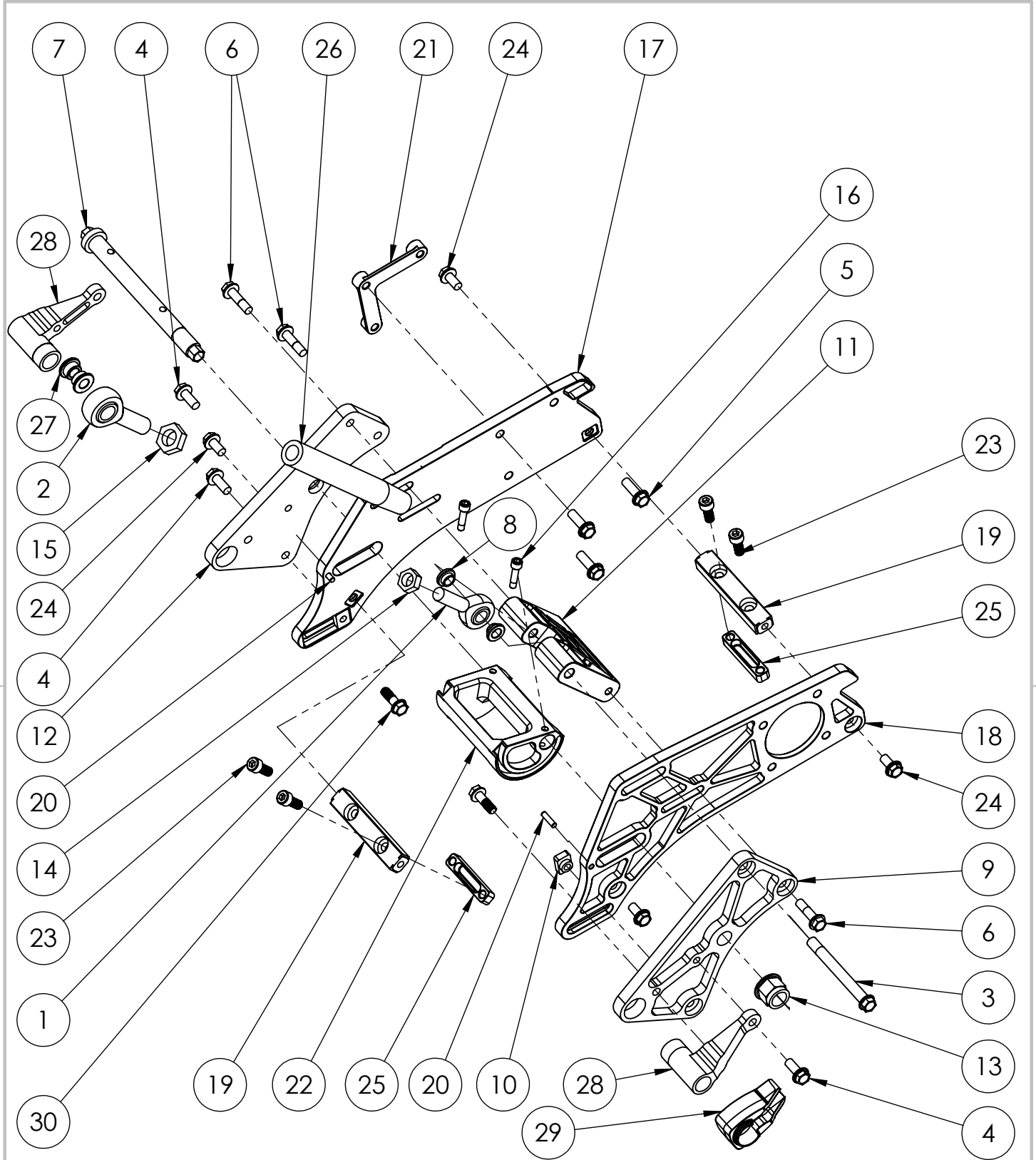
1

B

B

A

A



2016 BIKE MOUNT ASSYSEMBLY

C3 POWERSPORTS 2014 LTD

#1 - 17 RENAULT CRESENT,
ST. ALBERT, AB. T8N 4B7
PH 780 419-2040 888 267-5554 www.c3powersports.com

PROPRIETARY AND CONFIDENTIAL

THE INFORMATION CONTAINED IN THIS DRAWING IS THE SOLE PROPERTY OF C3 POWERSPORTS 2014 LTD. ANY REPRODUCTION IN PART OR AS A WHOLE WITHOUT THE WRITTEN PERMISSION OF C3 POWERSPORTS 2014 LTD IS PROHIBITED.



DWG. NO.

YABM1110 D12

REV.

DATE

JULY 11-2016

WEIGHT: 6.169

2

1

ITEM NO.	PART NUMBER	DESCRIPTION	QTY.
1	YPHW1218	ROD END, LH, 1/2-20, 7075 BLACK ANODIZED	1
2	YPHW1221	ROD END, RH, 5/8-18, 7075 BLACK ANODIZED	1
3	YPHW1035	BOLT, M10-1.25 x 95 FLANGE HEAD 12mm HEX DRIVE, LOWER ROD END, Ti	1
4	YPHW1001	BOLT, M8-1.25 X 20mm, FLANGE HEAD 12mm HEX DRIVE, Ti	4
5	YPHW1004	BOLT, M8-1.25 X 25mm, FLANGE HEAD 12mm HEX DRIVE, Ti	3
6	YPHW1005	BOLT, M8-1.25 X 30mm, FLANGE HEAD 12mm HEX DRIVE, Ti	3
7	YPHW1130	BOLT, ECCENTRIC CAM	1
8	YPBM1134	BUSHING, .5 BALL END TO 10mm BOLT	2
9	YPBM1111	BIKE MOUNT, SIDE PLATE, LH	1
10	YPHW1129	NUT, M8-1.25, T	2
11	YPBM1113	STRUT MOUNT BLOCK	1
12	YPBM1112	BIKE MOUNT, SIDE PLATE, RH	1
13	YPHW1593	NUT, M16-2.0, 28.5mm DIA FLANGE, NYLOCK	1
14	YPHW1061	NUT, 1/2-20, LH, LOCK	1
15	YPHW1062	NUT, 5/8-18, RH, LOCK	1
16	YPHW1012	BOLT, M6-1.0 X 25mm, SOCKET HEAD 5mm DRIVE, Ti	2
17	YPBM1103	TUNNEL SIDE PLATE, RH	1
18	YPBM1102	TUNNEL SIDE PLATE, LH	1
19	YPCH1108D6	CROSS BAR, TUNNEL SIDE PLATE	2
20	YPHW1262	Dowel Pin .1875 Dia x .75 Long	2
21	YPDR1228	NUT PLATE, TUNNEL PLATE, RH	1
22	YPBM1137D7	ECCENTRIC CAM	1
23	YPHW1009	BOLT, M8-1.25 X 20mm, SOCKET HEAD 6mm DRIVE, Ti	4
24	YPHW1003	BOLT, M8-1.25 X 16mm, FLANGE HEAD 12mm HEX DRIVE, Ti	4
25	YPCH1614	NUT PLATE, CROSS BAR	2
26	YPBM1239D1	STRUT, 7" LONG	1
27	YPBM1155	BUSHING, KTM 450 TOP .625 BALL END TO 10mm BOLT	2
28	YPBM1313	BIKE MOUNT ADAPTER, LH, RH KTM 200, 350	2
29	YPBM1131D4	CHAIN PROTECTOR, BIKE ADAPTER	1
30	YPHW1004D1	BOLT, M8-1.25 X 25mm, FLANGE HEAD 12mm HEX DRIVE, Ti	2

NOTES

FOR SPECIFIC BIKE ADAPTER PARTS, ITEMS # 9, 12, 25, 26, 28. SEE THE BIKE ADAPTER ASSEMBLY WEB PAGE FOR MORE INFO.

2016 BIKE MOUNT ASSYSEMBLY

C3 POWERSPORTS 2014 LTD

#1 - 17 RENAULT CRESENT,
ST. ALBERT, AB. T8N 4B7
PH 780 419-2040 888 267-5554 www.c3powersports.com

PROPRIETARY AND CONFIDENTIAL

THE INFORMATION CONTAINED IN THIS DRAWING IS THE SOLE PROPERTY OF C3 POWERSPORTS 2014 LTD. ANY REPRODUCTION IN PART OR AS A WHOLE WITHOUT THE WRITTEN PERMISSION OF C3 POWERSPORTS 2014 LTD IS PROHIBITED.



DWG. NO.

REV.

YABM1110 D12

DATE

JULY 11-2016

WEIGHT: 6.169

OPTIONS STRUTS

ITEM NO	PART NUMBER	DESCRIPTION	QTY
26	YPBM1240	STRUT, 6.5"	1
26	YPBM1694	STRUT, 7.5"	1
26	YPBM1238	STRUT, 8.0"	1
26	YPBM1237	STRUT, 8.5"	1

RRS

ITEM NO	PART NUMBER	DESCRIPTION	QTY
26	YACU1845	SUSPENSION UPGRADE PACKAGE, KTM/HUSKY LINK RRS SHOCK KIT	1
26	YACU1846	SUSPENSION UPGRADE PACKAGE, YAMAHA 10-13 YZ450, 14-16 YZF250-450 RRS SHOCK KIT	1
26	YPCU1858	SUSPENSION UPGRADE PACKAGE, KTM NON-LINK RRS SHOCK KIT (62 LINK CHAIN)	1

BIKE MOUNT PLATES

ITEM NO	PART NUMBER	DESCRIPTION	QTY
9	YPBM1671	BIKE MOUNT, SIDE PLATE 2.0, LH (64 LINK CHAIN, CRF, RMZ, KXF)	
9	YPBM1672	BIKE MOUNT, SIDE PLATE 2.0, RH (64 LINK CHAIN, CRF, RMZ, KXF)	
9	YACU2104	AUTOMATIC CHAIN TENSIONER UPGRADE KIT (IF YOU HAVE 60 CHAIN THIS UPGRADE REQUIRES A 62 LINK CHAIN)	

STRUT BLOCK BOLT UPGRADE

6	YPCU2063	BOLT KIT, STRUT BLOCK UPGRADE KIT (3-M8x30MM UHT)	
---	----------	---	--

NOTES

FOR SPECIFIC BIKE ADAPTER PARTS, ITEMS # 9, 12, 25, 26, 28. SEE THE BIKE ADAPTER ASSEMBLY WEB PAGE FOR MORE INFO.

2016 BIKE MOUNT ASSYSEMBLY

C3 POWERSPORTS 2014 LTD

#1 - 17 RENAULT CRESENT,
ST. ALBERT, AB. T8N 4B7
PH 780 419-2040 888 267-5554 www.c3powersports.com

PROPRIETARY AND CONFIDENTIAL

THE INFORMATION CONTAINED IN THIS DRAWING IS THE SOLE PROPERTY OF C3 POWERSPORTS 2014 LTD. ANY REPRODUCTION IN PART OR AS A WHOLE WITHOUT THE WRITTEN PERMISSION OF C3 POWERSPORTS 2014 LTD IS PROHIBITED.



DWG. NO.

REV.

YABM1110 D12

DATE

JULY 11-2016

WEIGHT: 6.169