

2016 DRIVE SHAFT ASSEMBLY

C3 POWERSPORTS 2014 LTD

#1 - 17 RENAULT CRESENT,
ST. ALBERT, AB. T8N 4B7
PH 780 419-2040 888 267-5554 www.c3powersports.com

PROPRIETARY AND CONFIDENTIAL

THE INFORMATION CONTAINED IN THIS DRAWING IS THE SOLE PROPERTY OF C3 POWERSPORTS 2014 LTD. ANY REPRODUCTION IN PART OR AS A WHOLE WITHOUT THE WRITTEN PERMISSION OF C3 POWERSPORTS 2014 LTD IS PROHIBITED.



DWG. NO.

YADR1046 D9

REV.

DATE

JULY 7-2016

WEIGHT: 9.285

2

1

ITEM NO.	PART NUMBER	DESCRIPTION	QTY
1	YPDR1049	BEARING HOLDER, DRIVE SHAFT, LH	1
2	YPHW1048D1	BOLT, M8-1.25 X 20mm FLAT HEAD 5mm SOCKET DRIVE, Ti	8
3	YPDR1054D2	DRIVE SHAFT, 1 1/8" HEX, SPLINED TWO ENDS	1
4	YPDR1044	DRIVER, Yeti 7 Tooth 2.86 Pitch Involute	2
5	YPDR1042	BRAKE ROTOR HUB ADAPTER	1
6	YPDR1040	BEARING AND BRAKE HOLDER WITH PS-1 BRAKE MOUNT	1
7	YPDR1055	BRAKE DEFLECTOR	1
8	YPHW1036D1	BOLT, M8-1.25 X 35mm FLAT HEAD 5mm SOCKET DRIVE, Ti	2
9	YPDR1211	CALIPER, BRAKE, PS1	1
10	YPDR1212	PAD, BRAKE, PS-1	2
11	YPHW1941	BOLT, FLANGE HEAD M6 X 16MM GRADE 10.9	4
12	YPHW1034D1	BOLT, M12-1.25 X 20mm, FLANGE HEAD SPRING, 17mm HEX DRIVE, Ti	2
13	YPDR1260	BEARING, 6205, 25MM X 52MM X 15MM	1
14	YPHW1342	RING, EXTERNAL SNAP, 1-1/16"	2
15	YPHW1282	RING, INTERNAL SNAP, 2.00"	2
16	YPHW1057	WASHER, SHAFT GEAR SPACER, 1.5OD X 11D X .125"TH	1
17	YPDR1056	YETI BRAKE ROTOR	1
18	YPDR1564	WASHER, BRAKE, COPPER	2
19	YPHW1844D1	BOLT, M10-1.25 X 18mm, BANJO, FLANGE HEAD 12mm HEX DRIVE, Ti	1
20	YPDR1349	80" Brake line - H692/0/H693 - Black line	1
21	YPDR1259	BEARING, 6304, 20MM X 52MM X 15MM	1
22	YPDR1227D2	NUT PLATE, BRAKE	1
23	YPDR1225D3	NUT PLATE, DRIVE SHAFT	1
24	YPDR1229	SPEED BLEEDER	1
25	YPHW1063D1	NUT, TOP LOCK M6	4

OPTIONS

ITEM NO.	PART NUMBER	DESCRIPTION	QTY.
3	YPDR1619	DRIVE SHAFT, 1 1/16" HEX, Ti, MACHINED	1
4	YPDR1919	DRIVER, Yeti 7 Tooth 2.86 Pitch Involute, 1 1/16" HEX	2

REVISIONS/NOTES

- ITEM 11 AND 25 COME COMPLETE IN QTY OF 4. NOTE THAT ORIGINAL DESIGN DID NOT USE NUTS
- YPDR1919 REPLACES ORIGINAL DRIVE YPDR1044

2016 DRIVE SHAFT ASSEMBLY

C3 POWERSPORTS 2014 LTD

#1 - 17 RENAULT CRESENT,
ST. ALBERT, AB. T8N 4B7
PH 780 419-2040 888 267-5554 www.c3powersports.com

DWG. NO.

REV.

PROPRIETARY AND CONFIDENTIAL

THE INFORMATION CONTAINED IN THIS DRAWING IS THE SOLE PROPERTY OF C3 POWERSPORTS 2014 LTD. ANY REPRODUCTION IN PART OR AS A WHOLE WITHOUT THE WRITTEN PERMISSION OF C3 POWERSPORTS 2014 LTD IS PROHIBITED.



YADR1046 D9

DATE **JULY 7-2016**

WEIGHT: 9.285

2

1

2

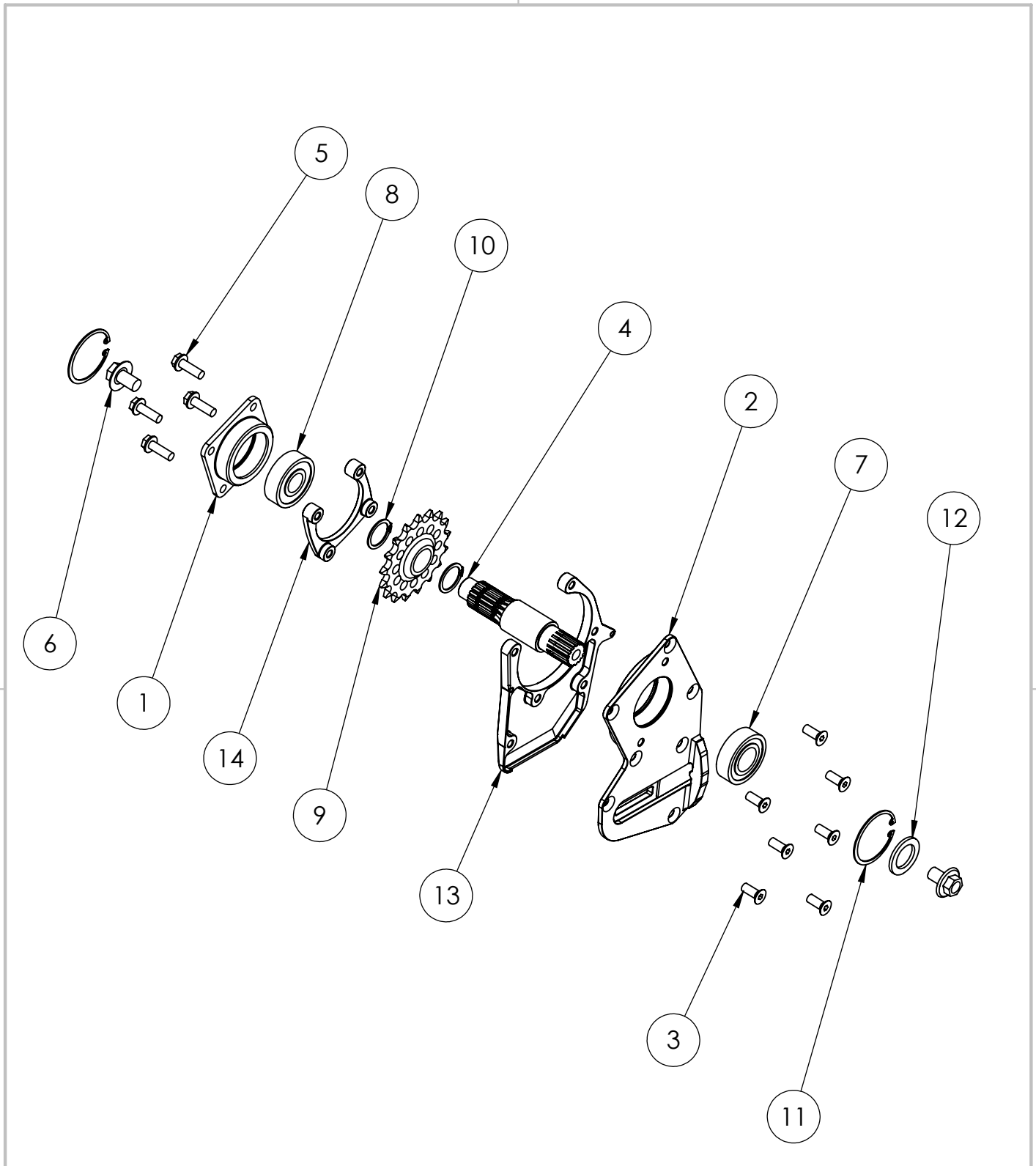
1

B

B

A

A



2016 JACK SHAFT ASSEMBLY

C3 POWERSPORTS 2014 LTD

#1 - 17 RENAULT CRESENT,
ST. ALBERT, AB. T8N 4B7
PH 780 419-2040 888 267-5554 www.c3powersports.com

PROPRIETARY AND CONFIDENTIAL

THE INFORMATION CONTAINED IN THIS DRAWING IS THE SOLE PROPERTY OF C3 POWERSPORTS 2014 LTD. ANY REPRODUCTION IN PART OR AS A WHOLE WITHOUT THE WRITTEN PERMISSION OF C3 POWERSPORTS 2014 LTD IS PROHIBITED.



DWG. NO.

REV.

YADR1045 D10

DATE

JULY 7-2016

WEIGHT: 4.162

2

1

2

1

ITEM NO.	PART NUMBER	DESCRIPTION	QTY.
1	YPDR1050	BEARING HOLDER, JACK SHAFT	1
2	YPDR1051	BEARING HOLDER, JACK SHAFT, DRIVE PLATE WITH TENSIONER SLOT	1
3	YPHW1048	BOLT, M8-1.25 X 20mm FLAT HEAD 5mm SOCKET DRIVE, Ti	7
4	YPDR1053	JACK SHAFT, SPLINED TWO ENDS	1
5	YPHW1004	BOLT, M8-1.25 X 25mm, FLANGE HEAD 12mm HEX DRIVE, Ti	4
6	YPHW1034	BOLT, M12-1.25 X 20mm FLANGE HEAD SPRING 17mm HEX DRIVE Ti	2
7	YPDR1260	BEARING, 6205, 25MM X 52MM X 15MM	1
8	YPDR1259	BEARING, 6304, 20MM X 52MM X 15MM	1
9	YPDR1117	CHAIN SPROCKET, 17 TOOTH, 28mm X 17 SPLINE	1
10	YPHW1342	RING, EXTERNAL SNAP, 1-1/16"	2
11	YPHW1282	RING, INTERNAL SNAP, 2.00"	2
12	YPHW1057	WASHER, SHAFT GEAR SPACER, 1.5OD X 1ID X .125"TH	1
13	YPDR1224	NUT PLATE, DRIVE PLATE	1
14	YPDR1226	NUT PLATE, TUNNEL PLATE, LH	1

OPTIONS

4	YPDR2061	JACK SHAFT, 1 INCH 15 OUTPUT SPLINE, 25.2MM INPUT SPLINE, Ti	1
---	----------	--	---

2016 JACK SHAFT ASSEMBLY

C3 POWERSPORTS 2014 LTD

#1 - 17 RENAULT CRESENT,
ST. ALBERT, AB. T8N 4B7
PH 780 419-2040 888 267-5554 www.c3powersports.com

DWG. NO.

REV.

PROPRIETARY AND CONFIDENTIAL

THE INFORMATION CONTAINED IN THIS DRAWING IS THE SOLE PROPERTY OF C3 POWERSPORTS 2014 LTD. ANY REPRODUCTION IN PART OR AS A WHOLE WITHOUT THE WRITTEN PERMISSION OF C3 POWERSPORTS 2014 LTD IS PROHIBITED.



DATE

JULY 7-2016

WEIGHT: 4.162

YADR1045 D10

2

1