



CONVERTING EMBROIDERY DESIGN FILES FOR YOUR EVERSEWN HERO EMBROIDERY MACHINE

If you wish to use embroidery designs that are not included with your Hero Machine, the use of the Hero Embroidery Conversion Software may be required to produce compatible designs for the Hero's design reader. This software currently only runs on the Windows operating system.

We also recommend downloading and using the free Software Bernina Artlink: <https://www.bernina.com/en-US/Products-US/BERNINA-products/Software/BERNINA-embroidery-software/ArtLink-Seven> if you would like to make sizing and positioning changes on your embroidery designs.

STEP 1:

Visit our EverSewn website: www.eversewn.com/hero and click on Hero Embroidery conversion Software.

The image shows a browser window at www.eversewn.com/hero/. The page features several navigation buttons: 'HERO INSTRUCTION MANUAL', 'HERO EMBROIDERY REFERENCE GUIDE', 'HERO EMBROIDERY CONVERSION SOFTWARE' (highlighted with a red box), and 'COMPARE TO OTHER MODELS'. Below these is a section titled 'Why you will love the Hero' with images of the machine and embroidery designs. At the bottom, a Windows file explorer window is open, showing the file 'eversewnconv...msi' with a context menu where the 'Open' option is selected (highlighted with a red box). The taskbar at the bottom shows various application icons and the system clock indicating 10:41 AM on 5/24/2017.

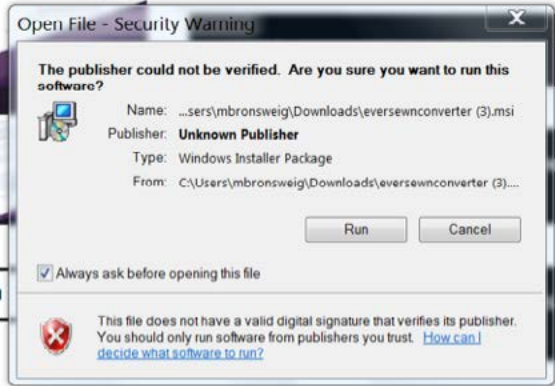
The EZ Converter software will automatically download to your computer. Open the file, click “Run” and follow instructions for setup.



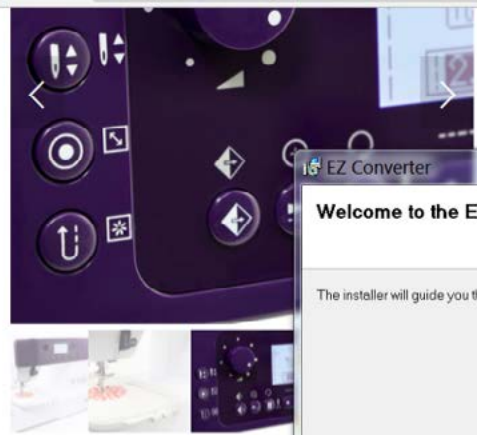
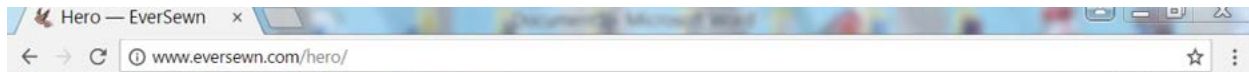
and working in smaller spaces. With a 7mm stitch width, automatic needle threader, adjustable foot pressure, 800spm sewing speed, and a detailed LCD screen, plus a 400+ stitch package, it checks all the boxes for beautiful design, easy sewing and a robust sewing and embroidering experience.



AVAILABLE ON AMAZON



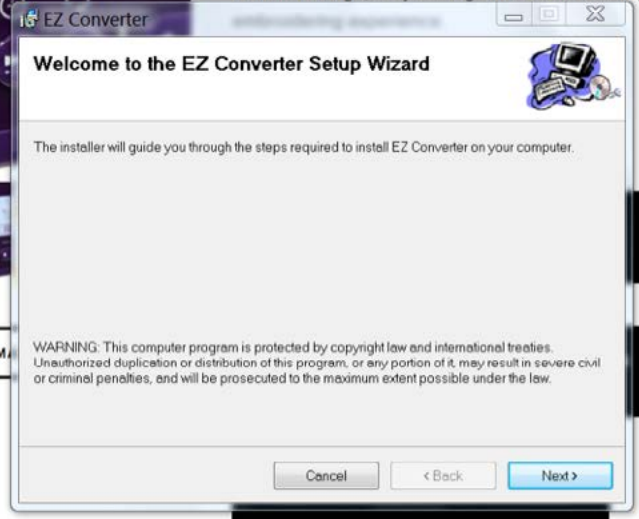
COMPARE TO OTHER MODELS



and working in smaller spaces. With a 7mm stitch width, automatic needle threader, adjustable foot pressure, 800spm sewing speed, and a detailed LCD screen, plus a 400+ stitch package, it checks all the boxes for beautiful design, easy sewing and a robust sewing and



AVAILABLE ON AM

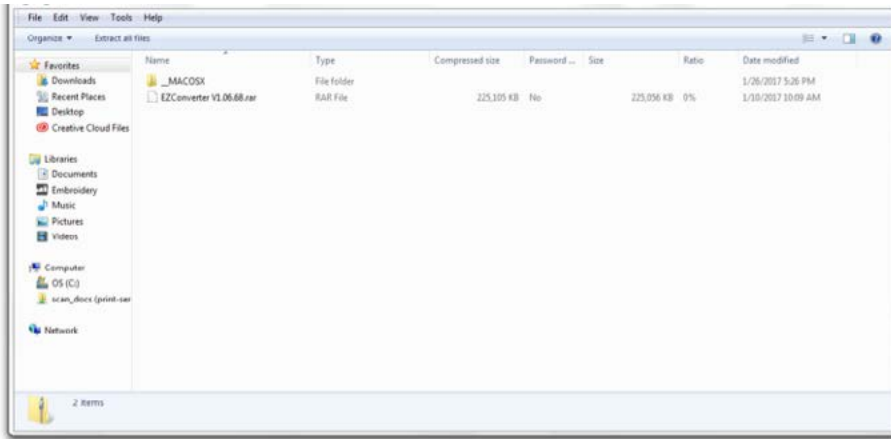


COMPARE TO OTHER MODELS

STEP 2:

Opening the software: Find EZConverter in your applications and double click to open:

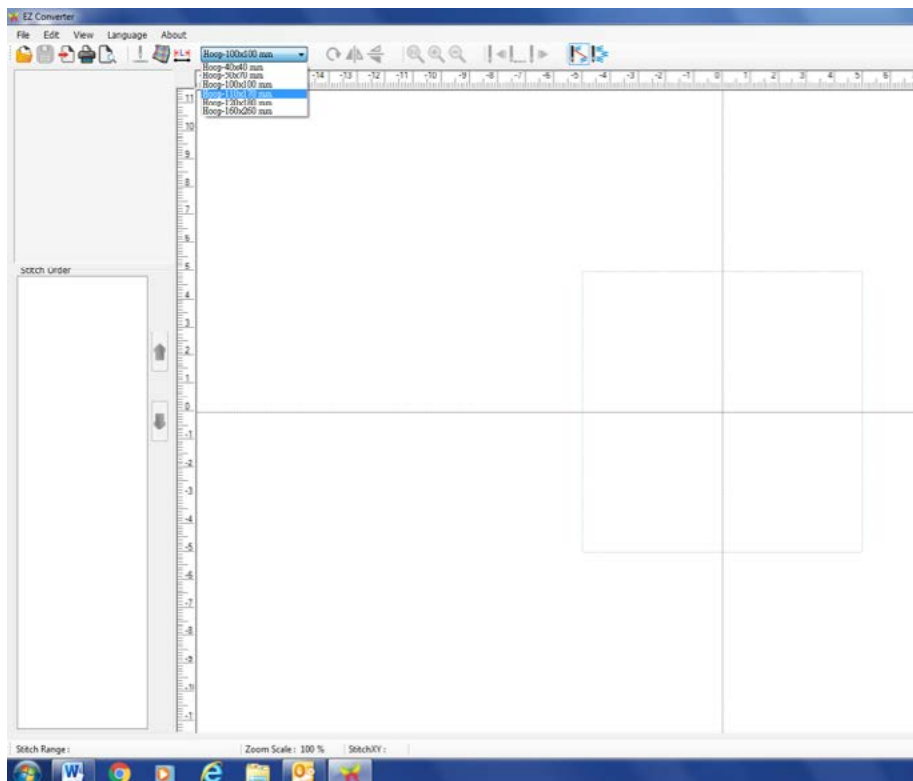
After installing the software, a butterfly icon named EZ Converter will appear on your desktop. Double click on it and the Software will start.



STEP 3:

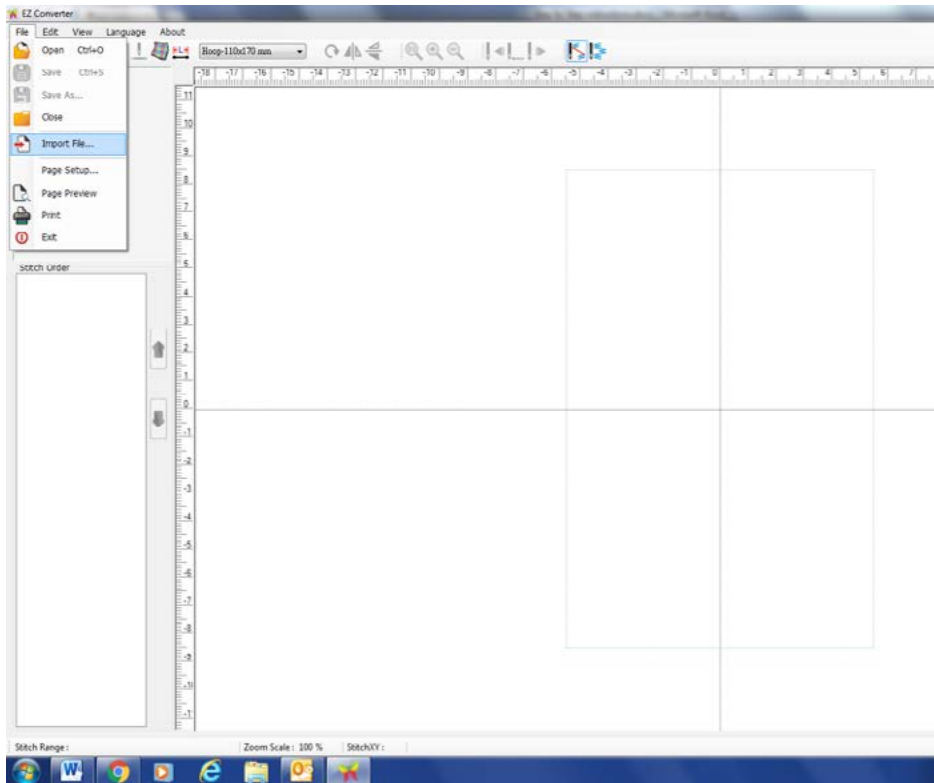
After opening the software, click on the hoop dropdown to select Hoop 110x170mm. This will help you to determine whether your design will fit in your EverSewn Hero hoop. If the design is too large for the hoop, the machine will not read the design.

In this case, you can use an embroidery software like Artlink to change the dimensions of your design. The maximum dimensions of a design that can be used on the EverSewn Hero are 110x70mm (4.33 x 6.7 inches)



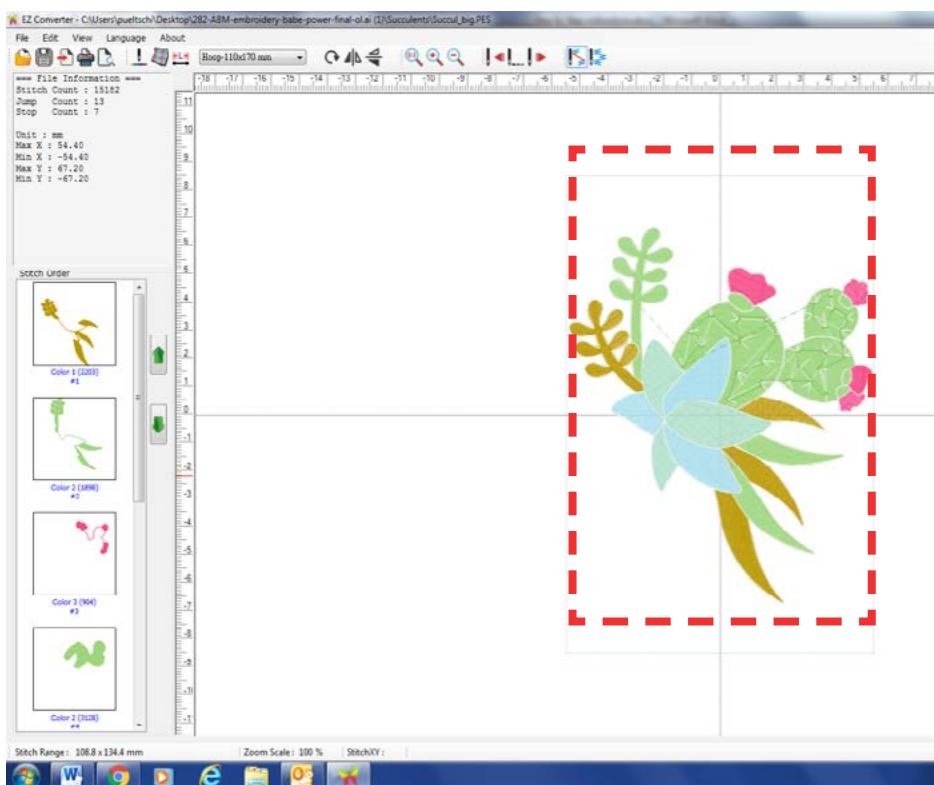
STEP 4:

To import embroidery files that you want to convert, click on Files and select Import Files. All major embroidery files can be imported. If you can select the type of Embroidery File to choose from, we recommend using the .PES file format. This prevents colors from changing and will give you the true design.



STEP 5:

Once the design has been imported you can now double check that design dimensions are within the borders of the hoop. We also recommend printing your design out. This will help you with placement on the fabric and color sequence.



STEP 6:

In order to save the design so your Hero Embroidery Machine can read it, just click on File and Save As... Make sure the Save as type is .zhs

Choose a folder or save it direct on to your USB Stick.

Once the design is on your USB stick you can go ahead and use the design in your machine. Have fun!

